

# Weekly Bankruptcy Analysis

## January 6-12, 2025

*Written by:  
Ed Flynn<sup>1</sup>*

*American Bankruptcy Institute; Alexandria, Va.*

Bankruptcy filings were fairly light during the week. Historically, filings from Thanksgiving through February tend to be rather low, before rebounding in March and April.

<b>Bankruptcy Filings - January 6 - 12</b>					
Type of Case	Number Filed	Percent Change From Same Week			
	2025	2024	2023	2022	2020 <i>(Pre-Pandemic)</i>
<b>Total</b>	<b>8,061</b>	<b>3.8%</b>	<b>21.7%</b>	<b>40.6%</b>	<b>-36.0%</b>
- Chapter 7	4,296	0.3%	26.8%	31.9%	-35.7%
- Chapter 11	225	59.6%	167.9%	164.7%	80.0%
- Chapter 13	3,530	6.0%	12.1%	48.1%	-39.0%
- Other Cases*	10	66.7%	900.0%	66.7%	-23.1%
<i>* Chapters 9, 12 and 15</i>					

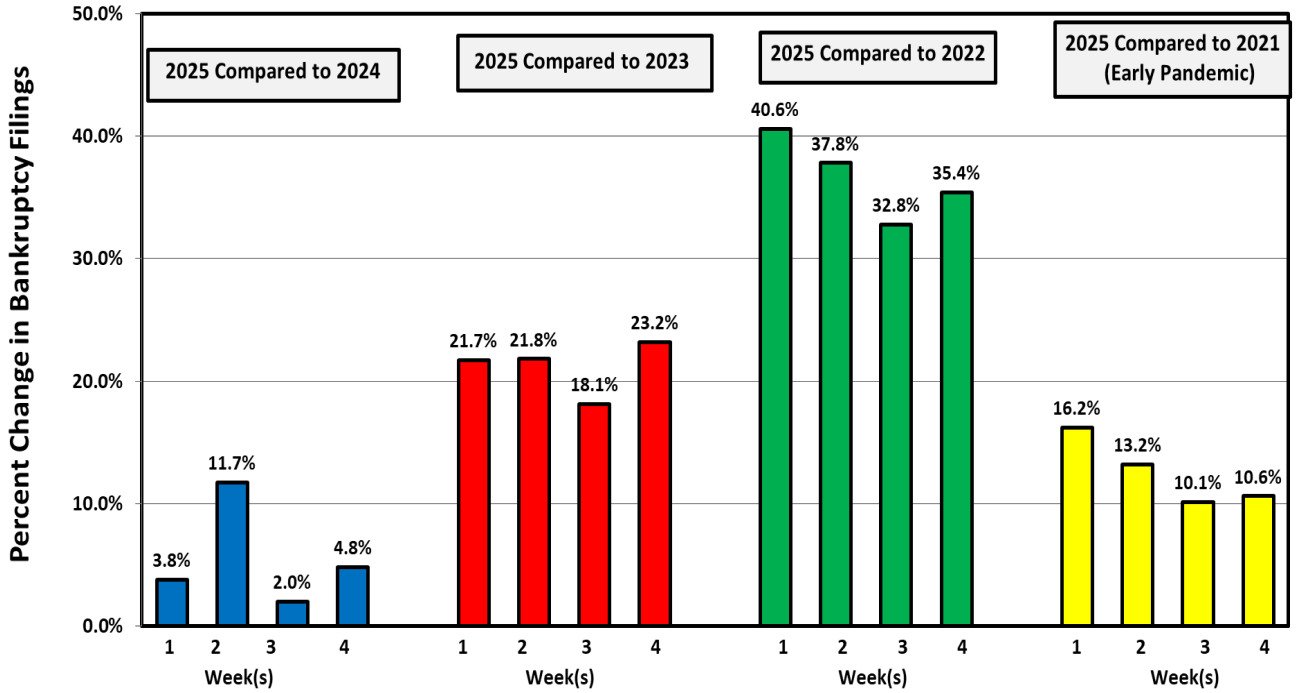
The following charts show recent weekly filing trends by chapter compared to the same week during each of the last four years.

---

<sup>1</sup> Ed Flynn is a consultant with ABI. He previously worked for more than 30 years at the Executive Office for U.S. Trustees and the Administrative Office of the U.S. Courts.

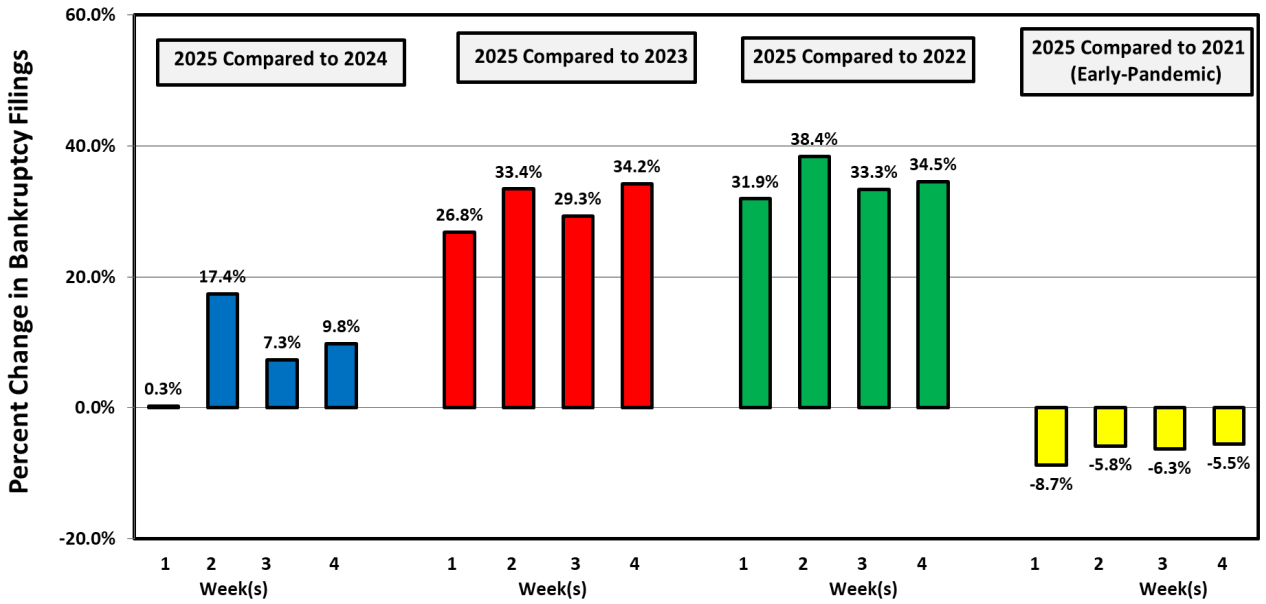
Week Ending  
January 12

### Bankruptcy Filing Trends (All Chapters) Percent Change From 2024, 2023, 2022 and 2021



Week Ending  
January 12

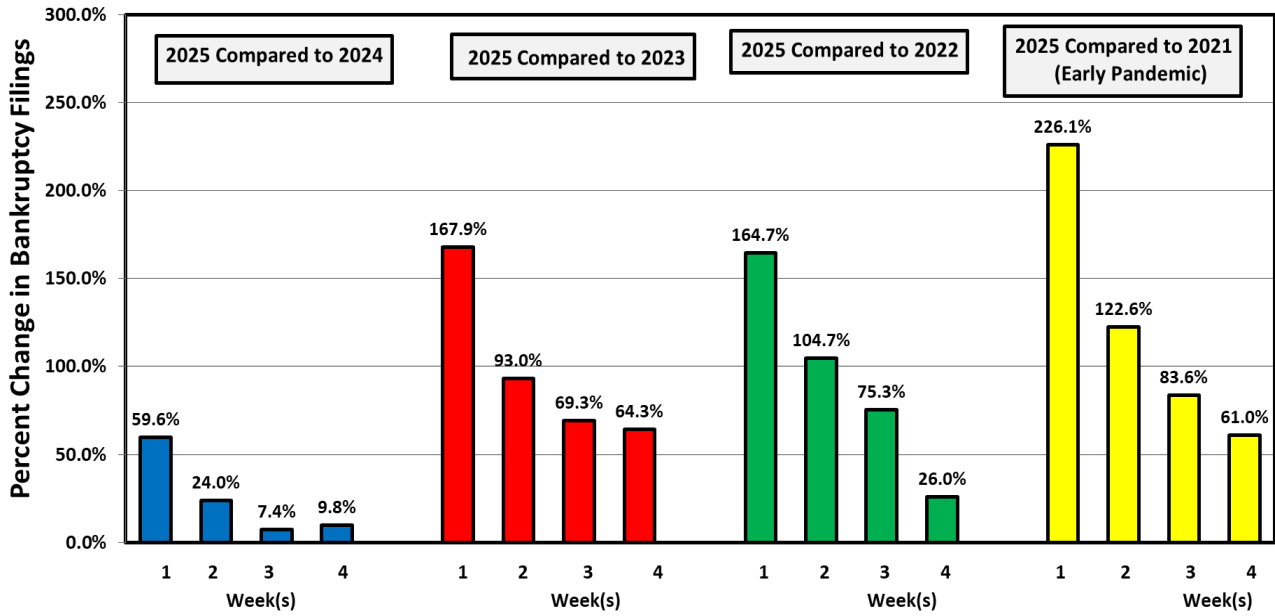
### Chapter 7 Filing Trends Percent Change From 2024, 2023, 2022 and 2021



Week Ending  
January 12

### Chapter 11 Filing Trends

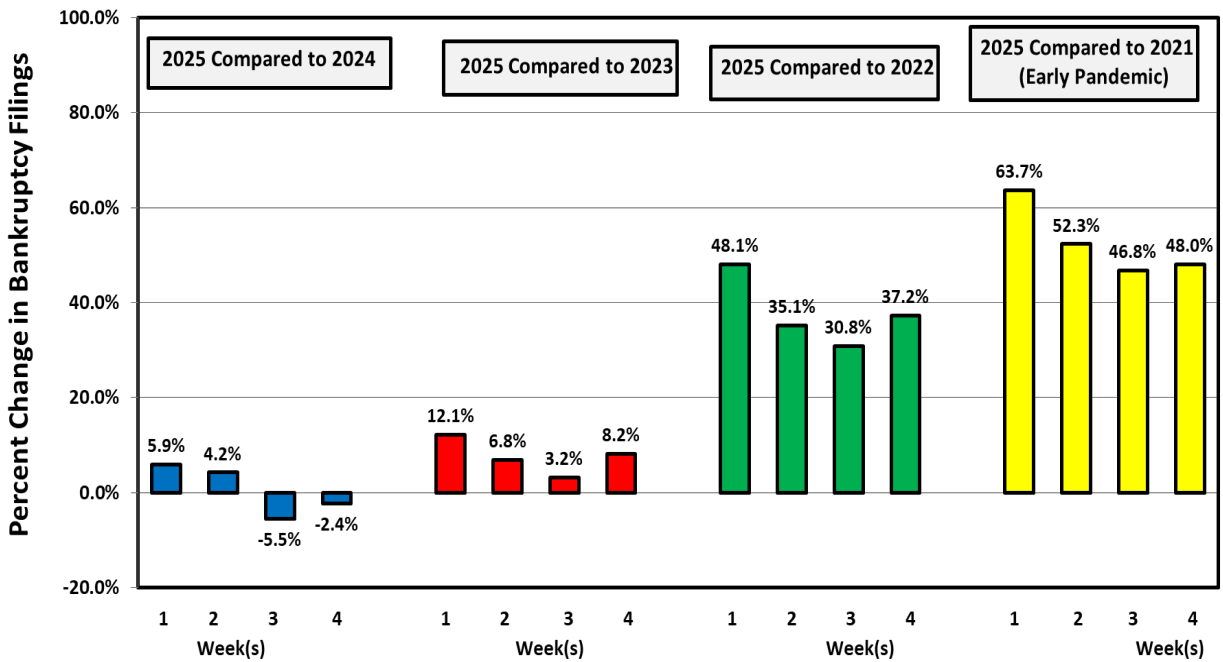
Percent Change From 2024, 2023, 2022 and 2021



Week Ending  
January 12

### Chapter 13 Filing Trends

Percent Change From 2024, 2023, 2022 and 2021



## Chapter 11 Cases

Chapter 11 filings were fairly high during the first full week of 2025. Even excluding related filings by corporate subsidiaries, filings were well above the volume filed during the same week in prior years.

<b>Types of Chapter 11 Cases Filed</b>					
	<b>January 6 - 12</b>				
	<b>2025</b>	<b>2024</b>	<b>2023</b>	<b>2022</b>	<b>2020 (Pre-Pandemic)</b>
<b>Total Filed</b>	<b>225</b>	<b>141</b>	<b>84</b>	<b>85</b>	<b>125</b>
<b>Solo Cases</b>	<b>113</b>	<b>76</b>	<b>54</b>	<b>61</b>	<b>97</b>
<b>Parent Cases</b>	<b>13</b>	<b>6</b>	<b>10</b>	<b>6</b>	<b>10</b>
<b>Child Cases</b>	<b>99</b>	<b>59</b>	<b>20</b>	<b>18</b>	<b>18</b>
<b><i>Filed By Individuals</i></b>	<b>31</b>	<b>12</b>	<b>16</b>	<b>26</b>	<b>37</b>
<b>Subchapter V Cases</b>	<b>43</b>	<b>50</b>	<b>40</b>	<b>30</b>	

There was one notable chapter 11 case filing during the week. On January 11, Prospect Medial Holdings Inc., a private hospital owner, filed in Delaware along with 66 related entities.

See ABI's Newsroom for news of the latest filings, and other news of interest to bankruptcy professionals, at [www.abi.org](http://www.abi.org).