

Weekly Bankruptcy Analysis

February 3-9, 2025

*Written by:
Ed Flynn¹*

American Bankruptcy Institute; Alexandria, Va.

The 8,446 total bankruptcy cases filed last week were slightly below the number of cases filed during the same week last year. However, so far in 2025 total bankruptcy filings are up by 7.9 percent over the same period in 2024.

Bankruptcy Filings - February 3 - 9, 2025					
Type of Case	Number Filed	Percent Change From Same Week			
		2025	2024	2023	2022
Total	8,446	-0.9%	9.3%	43.8%	-34.8%
- Chapter 7	4,622	2.1%	16.9%	35.8%	-36.1%
- Chapter 11	178	13.4%	9.2%	134.2%	6.6%
- Chapter 13	3,637	-5.1%	1.2%	52.0%	-34.1%
- Other Cases*	9	-10.0%	-35.7%	800.0%	-59.1%

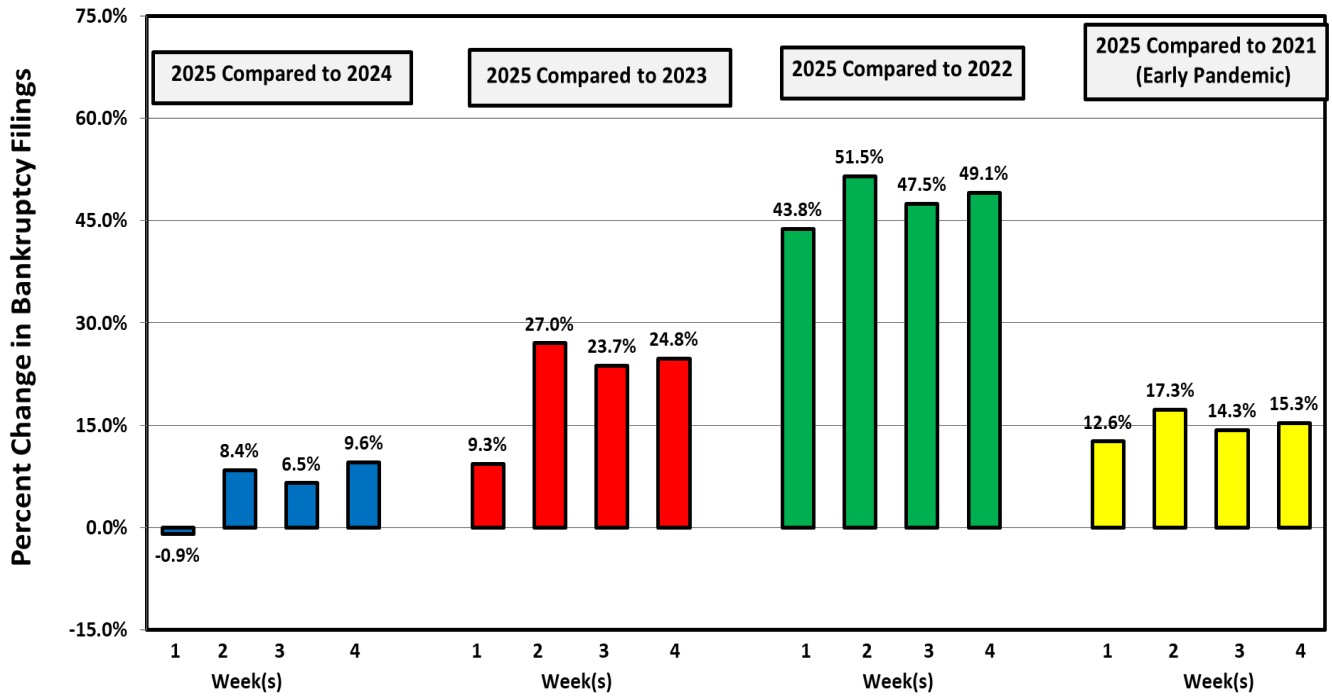
* Chapters 9, 12 and 15

The following charts show recent weekly filing trends by chapter compared to the same week during each of the last four years.

¹ Ed Flynn is a consultant with ABI. He previously worked for more than 30 years at the Executive Office for U.S. Trustees and the Administrative Office of the U.S. Courts.

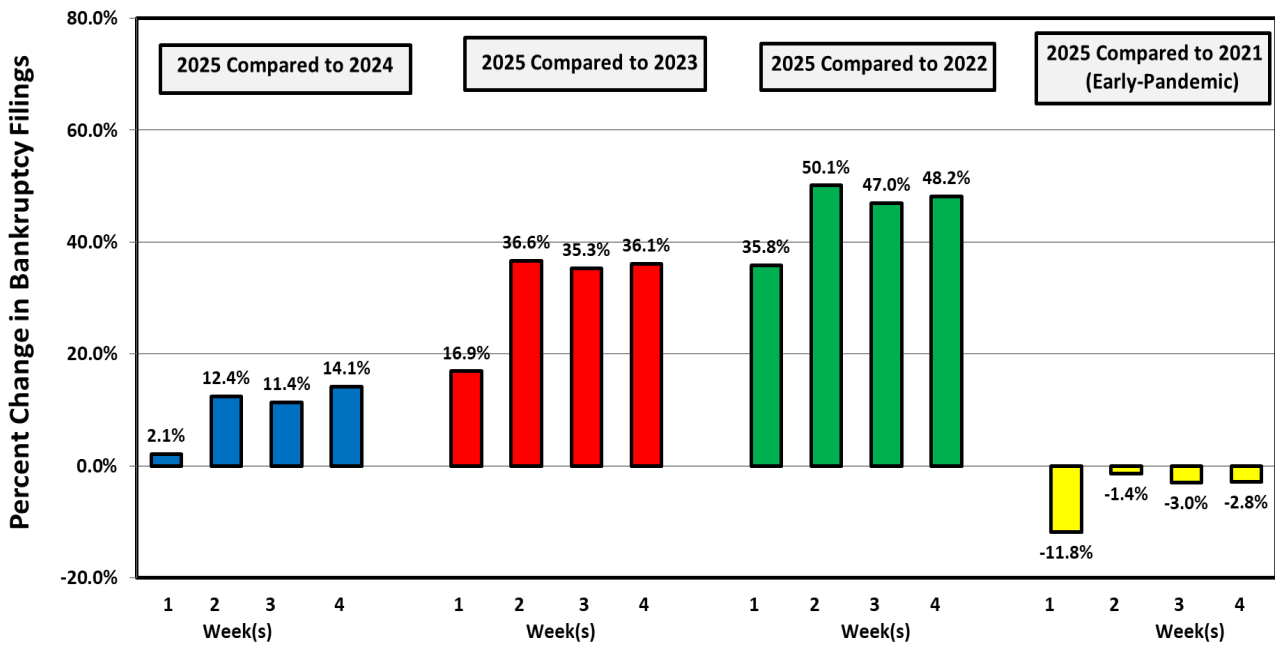
Week Ending
February 9

Bankruptcy Filing Trends (All Chapters) Percent Change From 2024, 2023, 2022 and 2021



Week Ending
February 9

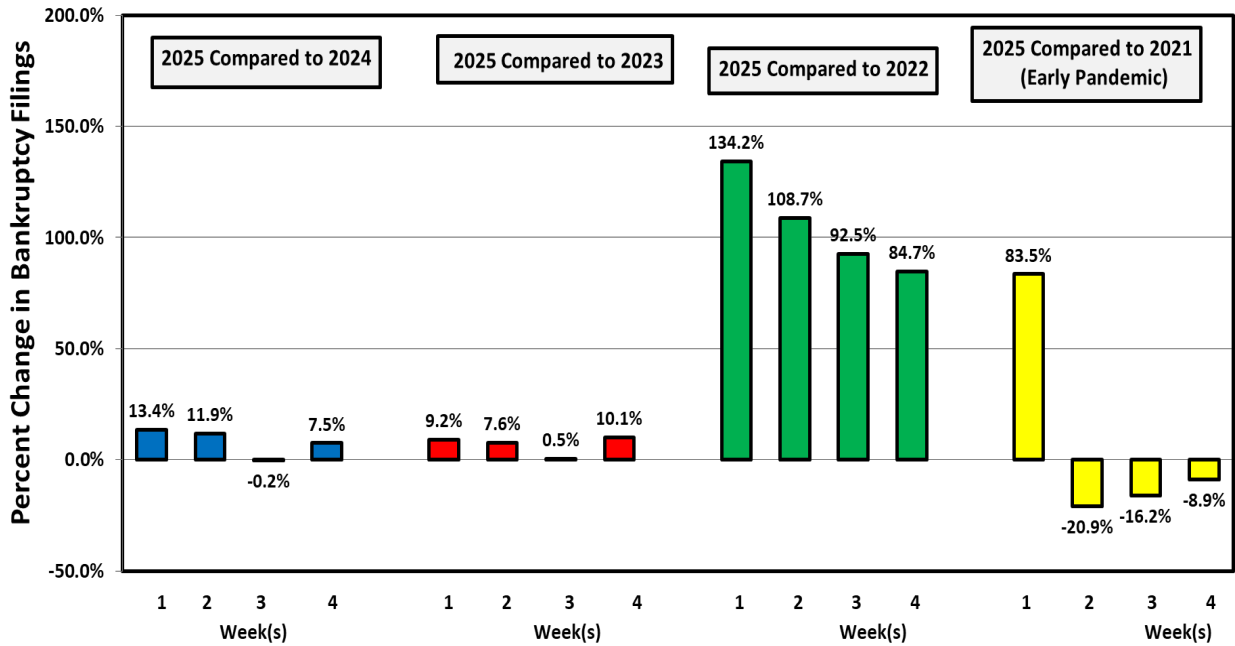
Chapter 7 Filing Trends Percent Change From 2024, 2023, 2022 and 2021



Week Ending
February 9

Chapter 11 Filing Trends

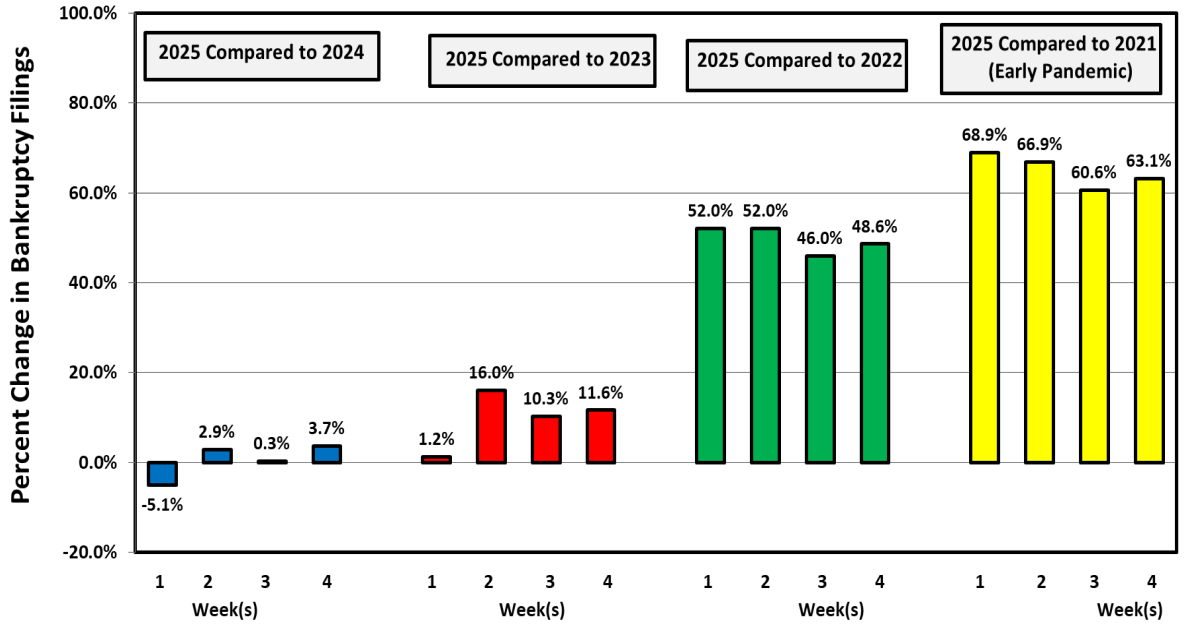
Percent Change From 2024, 2023, 2022 and 2021



Week Ending
February 9

Chapter 13 Filing Trends

Percent Change From 2024, 2023, 2022 and 2021



Chapter 11 Cases

Chapter 11 filings were about slightly above the number filed during the same week the last two years. However, excluding related filings by corporate subsidiaries, filings were well above prior years.

Types of Chapter 11 Cases Filed					
	February 3 - 9				
	2025	2024	2023	2022	2020 (Pre-Pandemic)
Total Filed	178	157	163	76	167
Solo Cases	115	94	64	66	119
Parent Cases	12	7	14	2	9
Child Cases	51	56	85	8	39
Filed By Individuals	24	20	22	25	38
Subchapter V Cases	50	42	40	34	

There were two large chapter 11 cases filed during the week.

Notable Chapter 11 Case Filings February 3 - 9, 2025				
Company Name	Industry	Date Filed	Court of Filing	Number of Related Cases
Lutheran Home and Services for the Aged, Inc.	Senior living community	2/4/2025	Illinois Northern	7
Zips Car Wash, LLC	Car wash operators	2/5/2025	Texas Northern	9

Official Filing Numbers for 2024

On Feb. 4, the Administrative Office of the U.S. Courts released the official filing numbers for Calendar Year 2024 (see <https://www.uscourts.gov/data-news/judiciary-news/2025/02/04/bankruptcy-filings-rise-14-2-percent>). The following charts and graphs show filing trends since 2000.

Highlights include:

- Total bankruptcy filings increased by 14.2 percent in 2024;
- The percentage changes by chapter from 2023 were as follows:
 - o Chapter 7: up 18.9 percent;
 - o Chapter 11: up 19.2 percent; and
 - o Chapter 13: up 7.2 percent;
- Business case filings were up by 22.1 percent from 2021; and
- The 517,308 cases filed during the year were down by 33.2 percent compared to 2019 (the last full year prior to the pandemic).

Bankruptcy Filings Nationwide Calendar Years 2000 - 2024

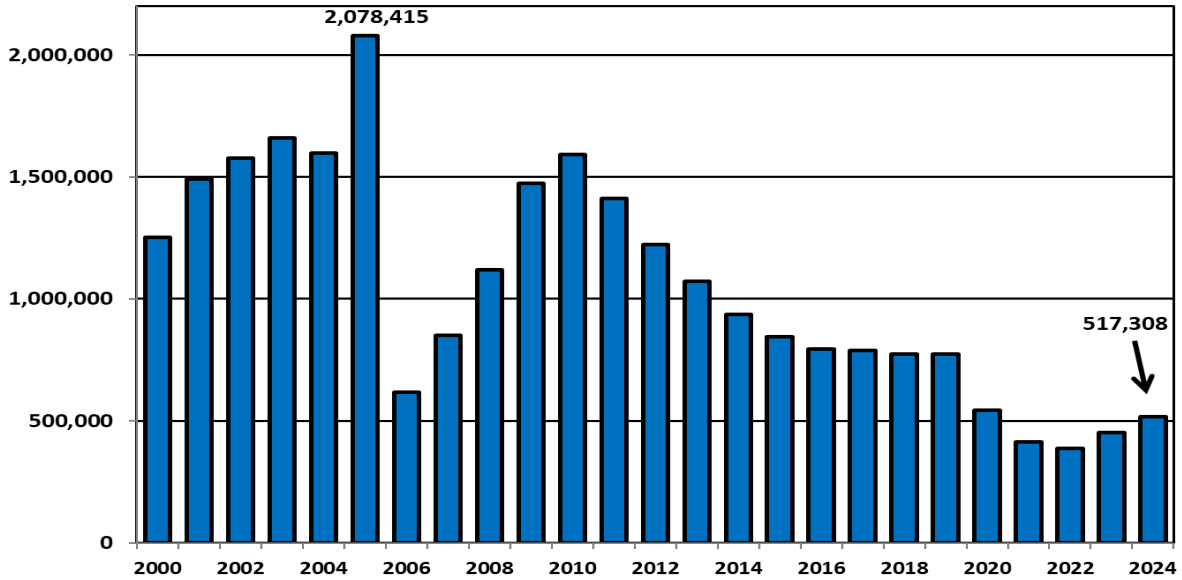
	Total	Chapter 7	Chapter 11	Chapter 13	Other Cases*
2024	517,308	310,631	8,884	197,244	549
2023	452,990	261,277	7,456	183,596	301
2022	387,721	225,455	4,918	157,087	261
2021	413,616	288,327	4,836	120,002	451
2020	544,463	378,953	8,333	156,377	800
2019	774,940	480,206	7,020	286,979	735
2018	773,418	475,575	7,095	290,146	602
2017	789,020	486,347	7,442	294,637	594
2016	794,960	490,365	7,292	296,655	648
2015	844,495	535,047	7,241	301,705	502
2014	936,795	619,069	7,234	310,061	431
2013	1,071,932	728,833	8,980	333,626	493
2012	1,221,091	843,545	10,361	366,532	653
2011	1,410,653	992,332	11,529	406,084	708
2010	1,593,081	1,139,601	13,713	438,913	854
2009	1,473,675	1,050,832	15,189	406,962	692
2008	1,117,771	744,424	10,160	362,762	425
2007	850,912	519,364	6,353	324,771	424
2006	617,660	360,890	5,163	251,179	428
2005	2,078,415	1,659,017	6,800	412,130	468
2004	1,597,462	1,137,958	10,132	449,129	243
2003	1,660,245	1,176,905	9,404	473,137	799
2002	1,577,651	1,109,923	11,270	455,877	581
2001	1,492,129	1,054,975	11,424	425,292	438
2000	1,253,444	859,220	9,884	383,894	446
*Chapters 9, 12 and 15					

Business Bankruptcy Cases Filed - Nationwide
Years Ended December 31, 2000 - 2024

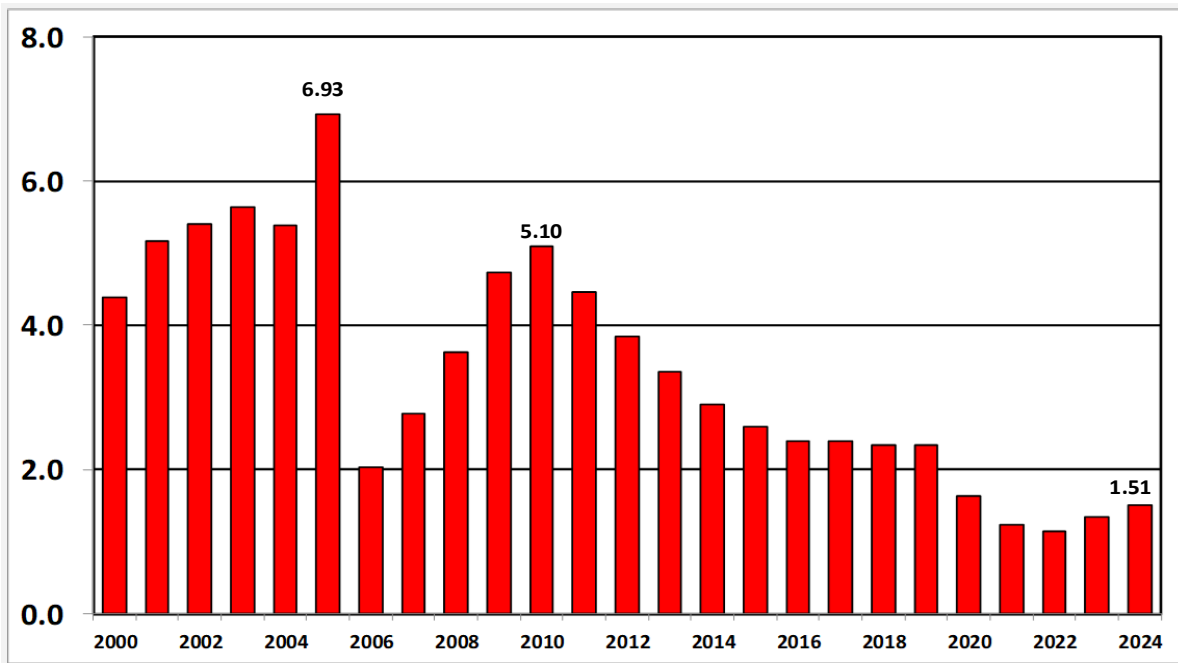
CALENDAR YEAR	TOTAL FILINGS	CHAPTER 7	CHAPTER 11	CHAPTER 13	OTHER CASES*
2024	23,107	12,582	8,456	1,520	549
2023	18,926	10,229	7,070	1,326	301
2022	13,481	7,728	4,465	1,027	261
2021	14,347	8,678	4,366	852	451
2020	21,655	11,919	7,786	1,150	800
2019	22,780	14,216	6,062	1,778	735
2018	22,232	13,678	6,078	1,874	602
2017	23,157	14,157	6,350	2056	594
2016	24,114	15,033	6,174	2259	648
2015	24,735	15,917	6,130	2190	498
2014	26,983	18,184	6,093	2,278	428
2013	33,212	22,334	7,660	2,727	491
2012	40,075	27,274	8,900	3,252	649
2011	47,806	33,698	9,772	3,630	706
2010	56,282	39,485	11,774	4,174	849
2009	60,837	41,962	13,683	4,500	692
2008	43,546	30,035	9,272	3,815	424
2007	28,322	18,751	5,736	3,412	423
2006	19,695	11,878	4,643	2,749	425
2005	39,201	28,006	5,923	4,808	464
2004	34,317	20,192	9,186	4,701	238
2003	35,037	20,631	8,474	5,138	794
2002	38,540	22,321	10,286	5,361	572
2001	40,099	23,482	10,641	5,542	434
2000	35,472	20,335	9,197	5,494	446

* Chapters 9, 12 and 15

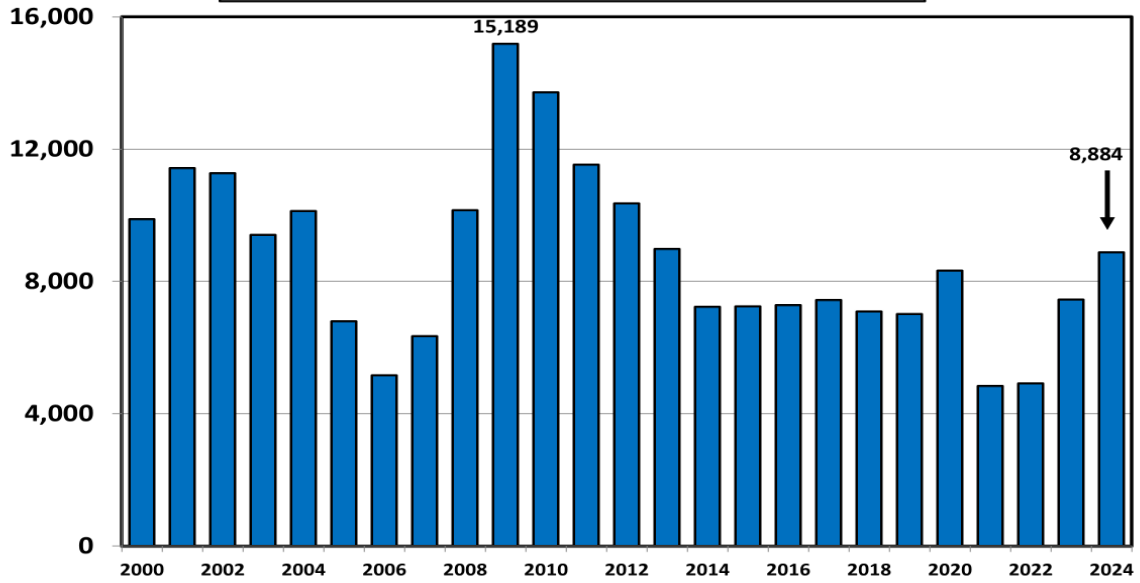
Total Bankruptcy Cases Filed Nationwide Calendar Years 2000 - 2024



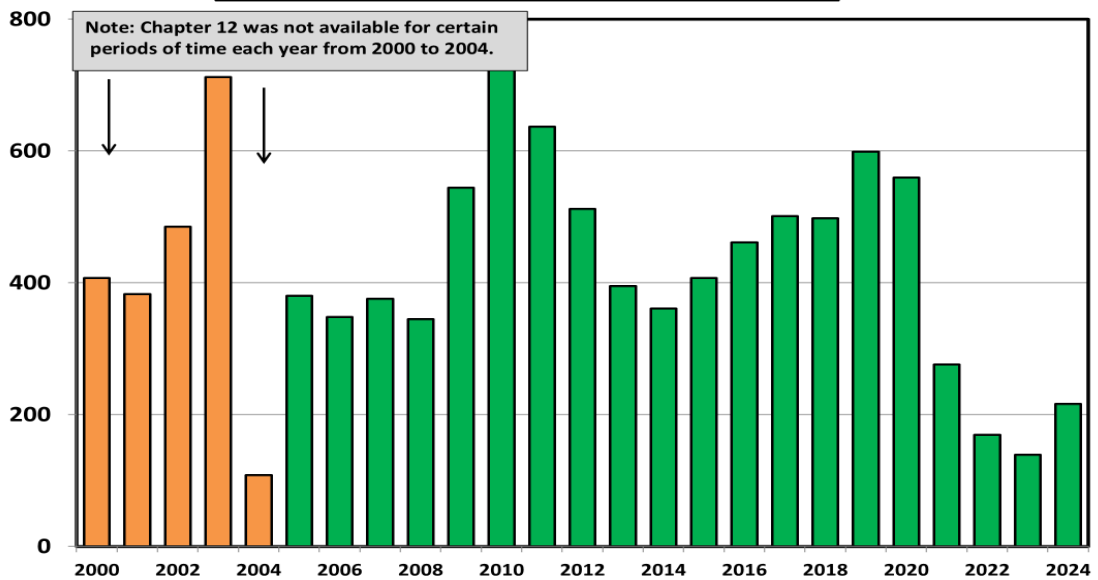
Bankruptcy Filings per 1,000 Population Calendar Years 2000 - 2024



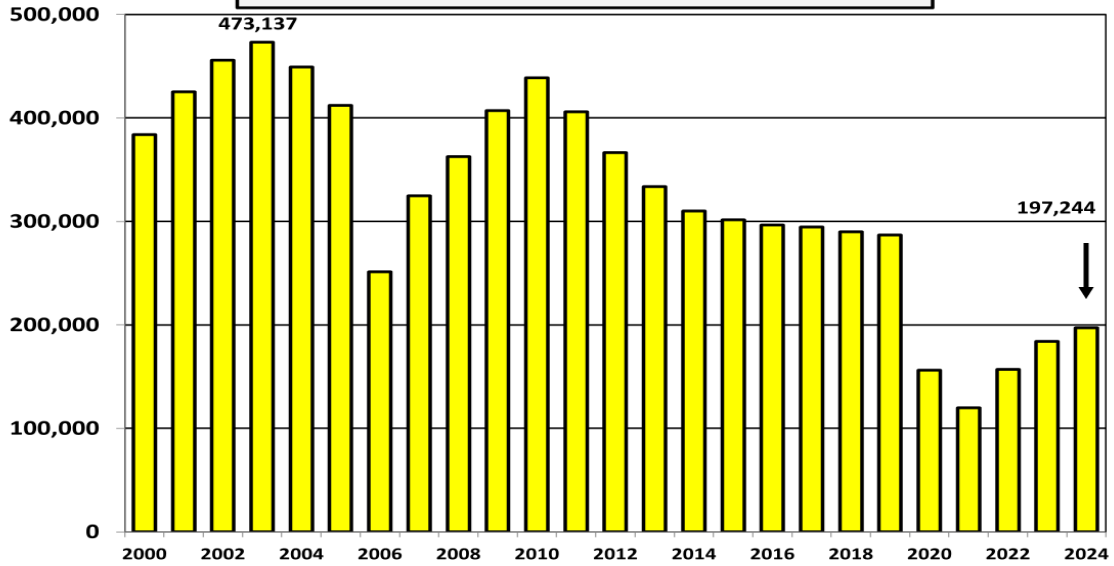
Chapter 11 Cases Filed Nationwide Calendar Years 2000 - 2024



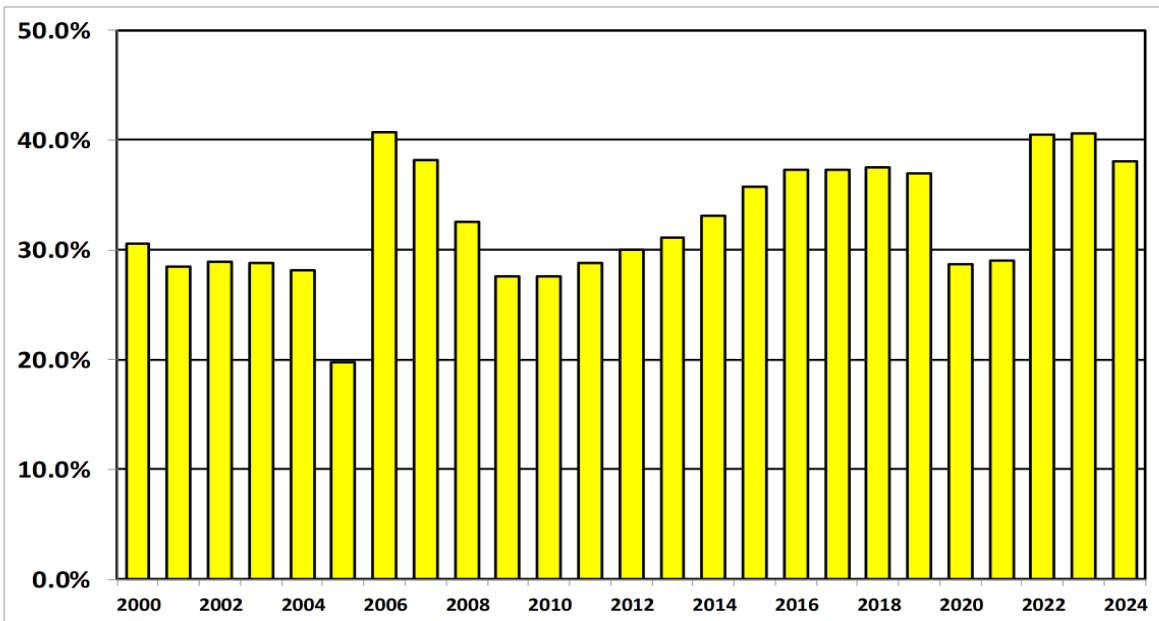
Chapter 12 Cases Filed Nationwide 2000 - 2024



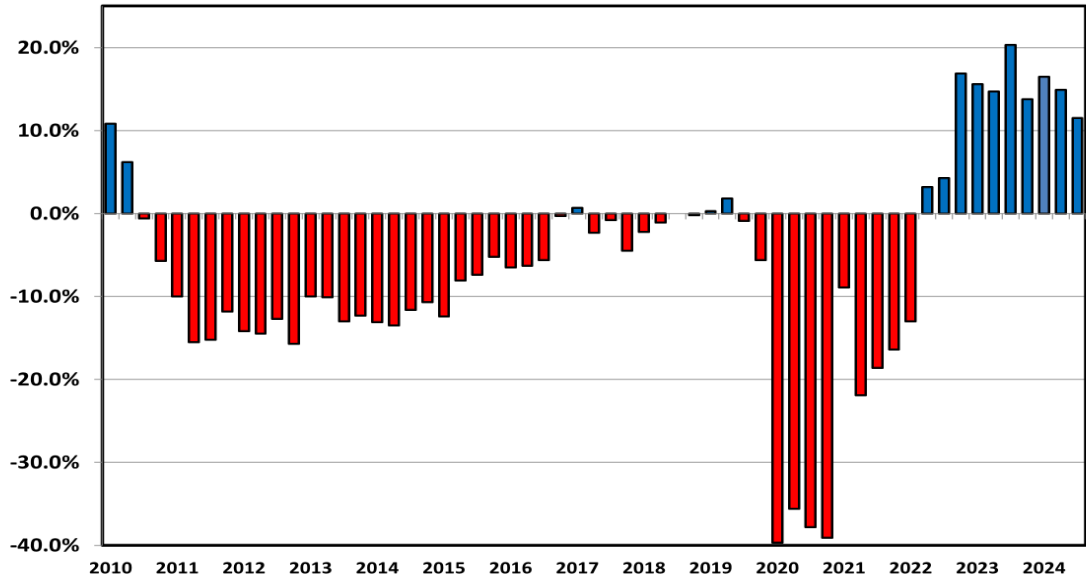
**Chapter 13 Cases Filed Nationwide
Calendar Years 2000 – 2024**



**Percent of Cases Filed as Chapter 13
Calendar Years 2000 - 2024**



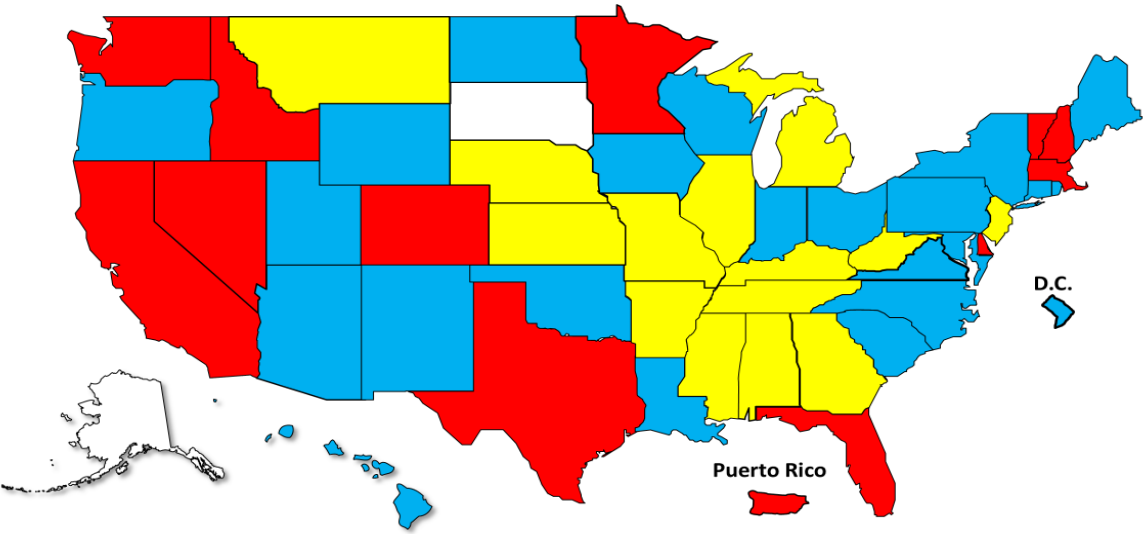
**Filing Trends By Quarter
(Percent Change From Same Quarter One Year Prior)**



**Bankruptcy Filing Trends
Calendar Year 2024 vs. 2023**

National Average = 14.2% Increase

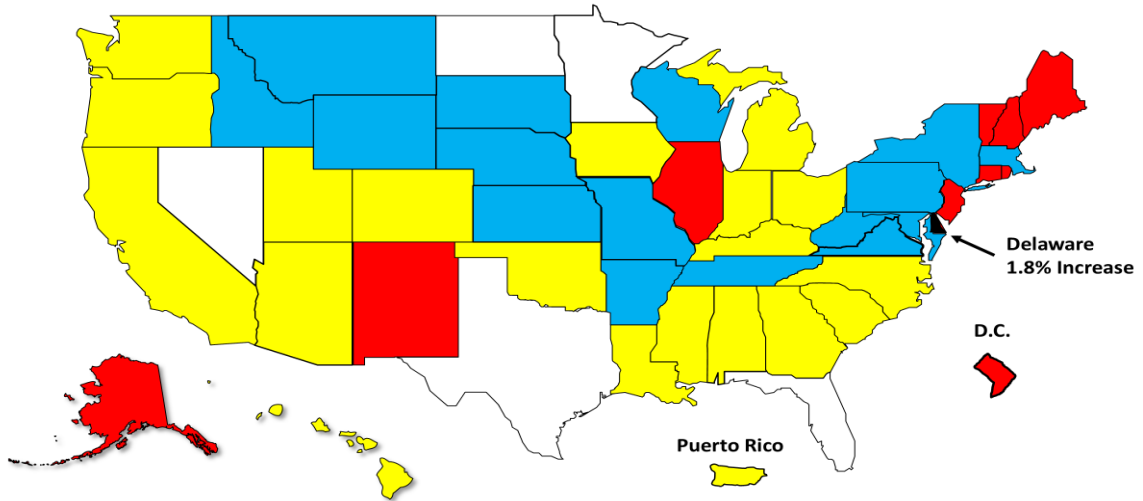
- +20% or More
- +10.0% to 19.9%
- +0% to 9.9%
- Decline



**Bankruptcy Filing Trends Since the Pandemic
Calendar Year 2024 vs. 2019**

National Average = 33.2% Decrease

Decline Under 25%
 Decline 25.0% – 34.9%
 Decline 35.0% – 44.9%
 Decline 45% or More

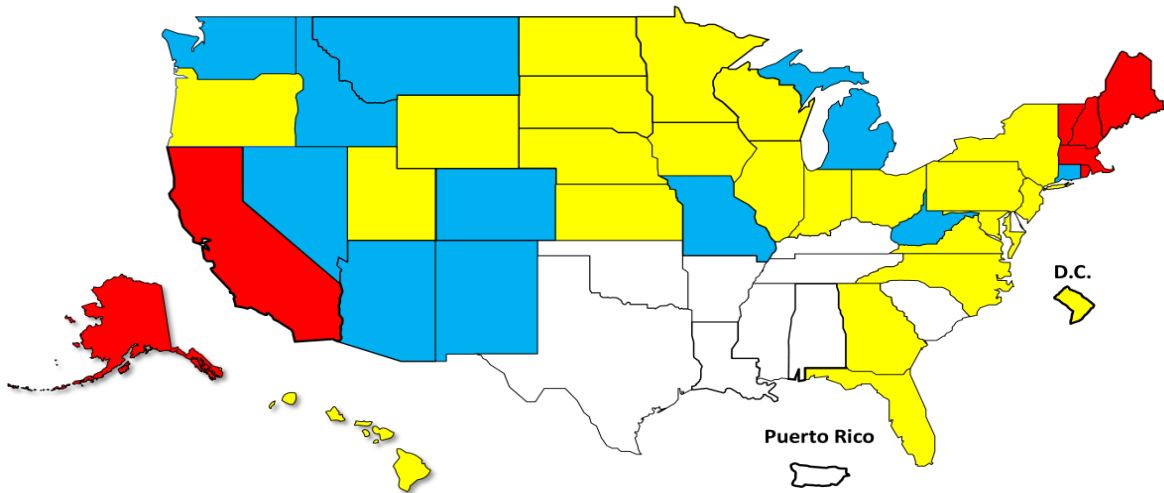


**Percent Change in Total Filings
Calendar Year 2024 Compared to 2010**

(National Average = 67.5% Decrease)

Amount of Decrease

Under 60%
 60.0% - 69.9%
 70.0% – 79.9%
 80.0% or More



See ABI's Newsroom for news of the latest filings, and other news of interest to bankruptcy professionals, at www.abi.org.