

Bankruptcy Filing Trends in the United States



Bankruptcy statistics for individual states are available at:

www.abi.org/newsroom/bankruptcy-statistics

Prepared by the American Bankruptcy Institute. www.abi.org



AMERICAN
BANKRUPTCY
INSTITUTE

Bankruptcy Filing Trends in the United States



Prepared by the American
Bankruptcy Institute
www.abi.org



AMERICAN
BANKRUPTCY
INSTITUTE

U.S. at a Glance	
	National
Population (7/1/2024)	341,784,857
- Change since April 2020	3.1%
- Foreign Born	14.1%
Size (Square Miles)	3,533,038
Median Household Income	\$80,734
Persons per Household	2.53
Per Capita Income	\$44,673
Median Home Value	\$332,700
Homeownership Rate	65.2%
High School Graduate (or Higher)	89.6%
College Graduate (or Higher)	35.7%
Disabled	9.3%
No Health Insurance	9.6%
In Poverty	10.6%
Source: U.S. Census Bureau February 2026	

Bankruptcy Filing Trends in the United States



Prepared by the American
Bankruptcy Institute
www.abi.org



AMERICAN
BANKRUPTCY
INSTITUTE

Bankruptcy Filings Nationwide Calendar Years 2000 - 2025					
	Total	Chapter 7	Chapter 11	Chapter 13	Other Cases*
2025	574,314	356,724	9,201	207,889	500
2024	517,308	310,631	8,884	197,244	549
2023	452,990	261,277	7,456	183,596	301
2022	387,721	225,455	4,918	157,087	261
2021	413,616	288,327	4,836	120,002	451
2020	544,463	378,953	8,333	156,377	800
2019	774,940	480,206	7,020	286,979	735
2018	773,418	475,575	7,095	290,146	602
2017	789,020	486,347	7,442	294,637	594
2016	794,960	490,365	7,292	296,655	648
2015	844,495	535,047	7,241	301,705	502
2014	936,795	619,069	7,234	310,061	431
2013	1,071,932	728,833	8,980	333,626	493
2012	1,221,091	843,545	10,361	366,532	653
2011	1,410,653	992,332	11,529	406,084	708
2010	1,593,081	1,139,601	13,713	438,913	854
2009	1,473,675	1,050,832	15,189	406,962	692
2008	1,117,771	744,424	10,160	362,762	425
2007	850,912	519,364	6,353	324,771	424
2006	617,660	360,890	5,163	251,179	428
2005	2,078,415	1,659,017	6,800	412,130	468
2004	1,597,462	1,137,958	10,132	449,129	243
2003	1,660,245	1,176,905	9,404	473,137	799
2002	1,577,651	1,109,923	11,270	455,877	581
2001	1,492,129	1,054,975	11,424	425,292	438
2000	1,253,444	859,220	9,884	383,894	446
*Chapters 9, 12 and 15					

Bankruptcy Filing Trends in the United States



Prepared by the American
Bankruptcy Institute
www.abi.org



AMERICAN
BANKRUPTCY
INSTITUTE

Business Bankruptcy Cases Filed - Nationwide					
Years Ended December 31, 2000 - 2025					
CALENDAR YEAR	TOTAL FILINGS	CHAPTER 7	CHAPTER 11	CHAPTER 13	OTHER CASES*
2025	24,737	14,259	8,659	1,319	500
2024	23,107	12,582	8,456	1,520	549
2023	18,926	10,229	7,070	1,326	301
2022	13,481	7,728	4,465	1,027	261
2021	14,347	8,678	4,366	852	451
2020	21,655	11,919	7,786	1,150	800
2019	22,780	14,216	6,062	1,778	735
2018	22,232	13,678	6,078	1,874	602
2017	23,157	14,157	6,350	2056	594
2016	24,114	15,033	6,174	2259	648
2015	24,735	15,917	6,130	2190	498
2014	26,983	18,184	6,093	2,278	428
2013	33,212	22,334	7,660	2,727	491
2012	40,075	27,274	8,900	3,252	649
2011	47,806	33,698	9,772	3,630	706
2010	56,282	39,485	11,774	4,174	849
2009	60,837	41,962	13,683	4,500	692
2008	43,546	30,035	9,272	3,815	424
2007	28,322	18,751	5,736	3,412	423
2006	19,695	11,878	4,643	2,749	425
2005	39,201	28,006	5,923	4,808	464
2004	34,317	20,192	9,186	4,701	238
2003	35,037	20,631	8,474	5,138	794
2002	38,540	22,321	10,286	5,361	572
2001	40,099	23,482	10,641	5,542	434
2000	35,472	20,335	9,197	5,494	446
* Chapters 9, 12 and 15					

Bankruptcy Filing Trends in the United States

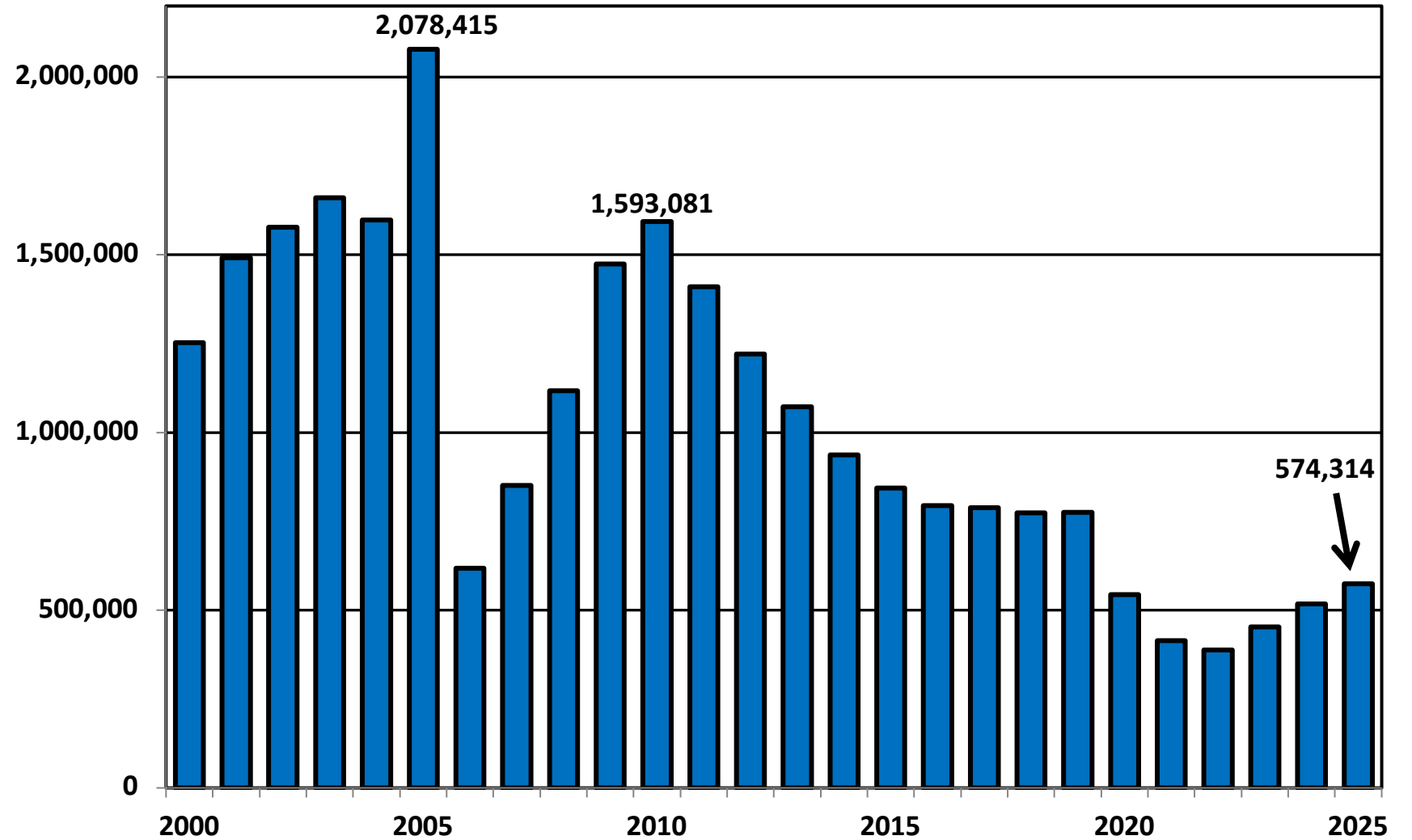


Prepared by the American
Bankruptcy Institute
www.abi.org



AMERICAN
BANKRUPTCY
INSTITUTE

Total Bankruptcy Cases Filed Nationwide Calendar Years 2000 - 2025



Bankruptcy Filing Trends in the United States

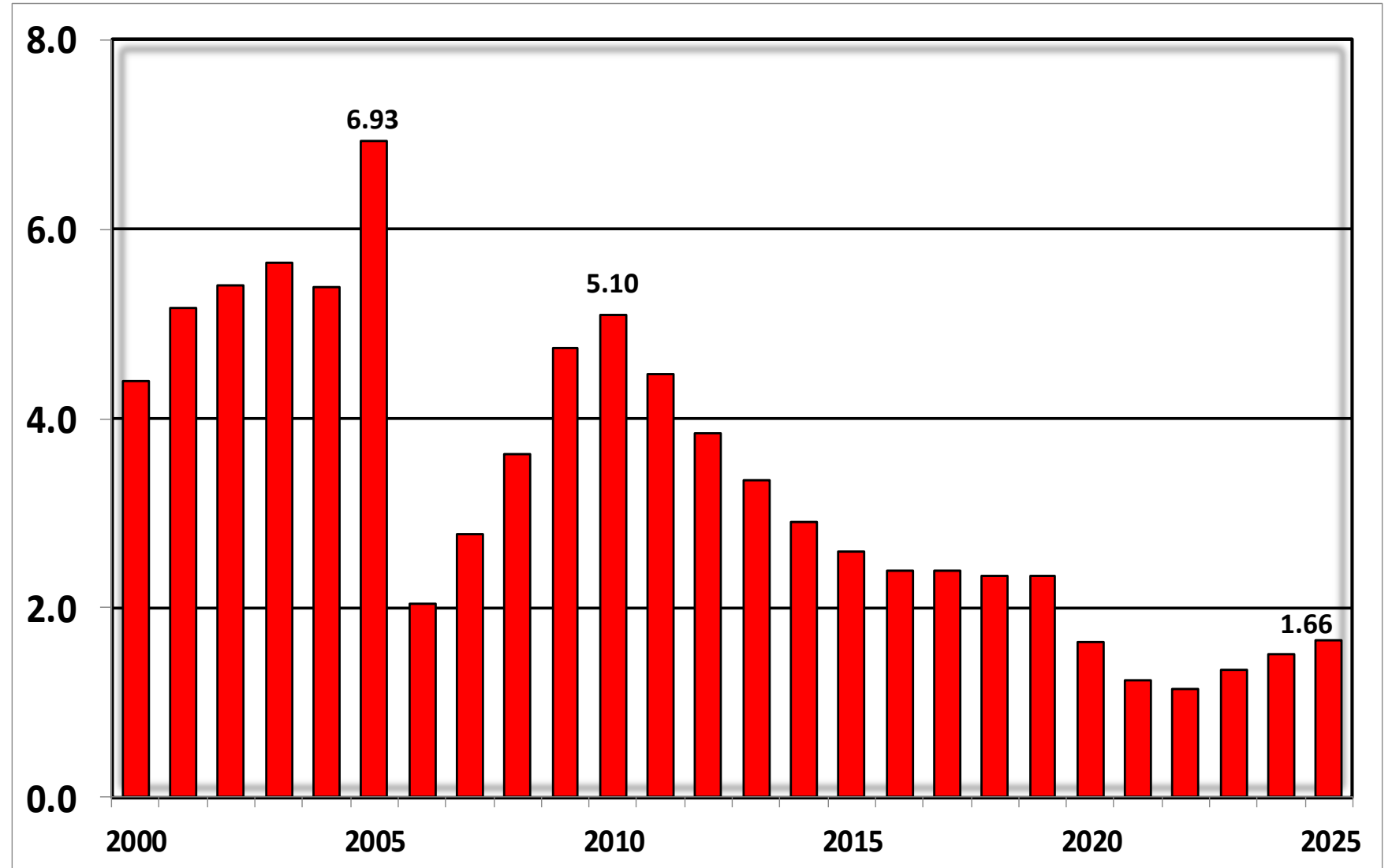


Prepared by the American
Bankruptcy Institute
www.abi.org



AMERICAN
BANKRUPTCY
INSTITUTE

Bankruptcy Filings per 1,000 Population Calendar Years 2000 - 2025



Bankruptcy Filing Trends in the United States



Prepared by the American Bankruptcy Institute
www.abi.org



AMERICAN BANKRUPTCY INSTITUTE

Total Filings Relative to Population 2000 - 2025



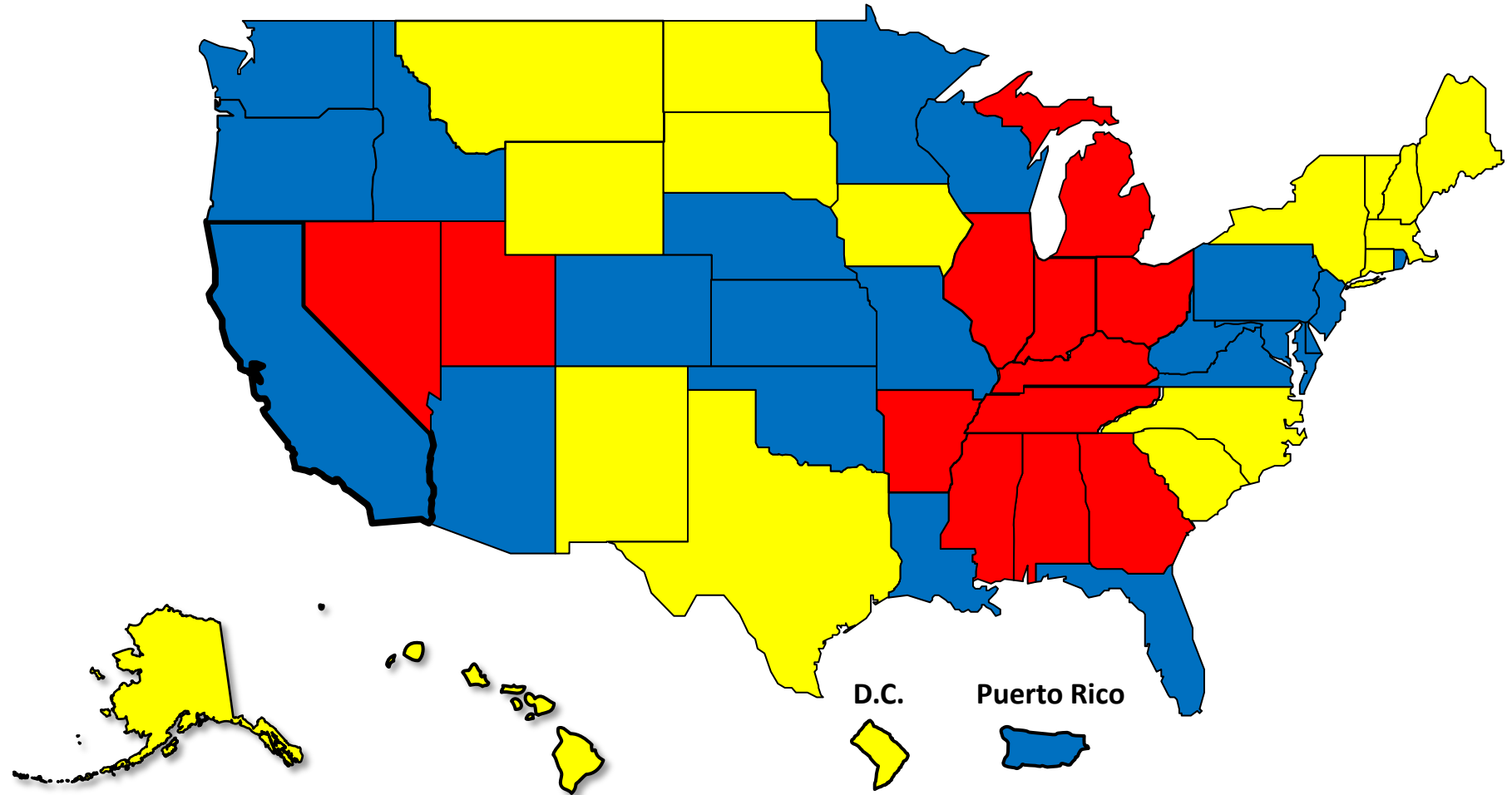
More than 25% Above Average



Within 25% of Average



More than 25% Below Average



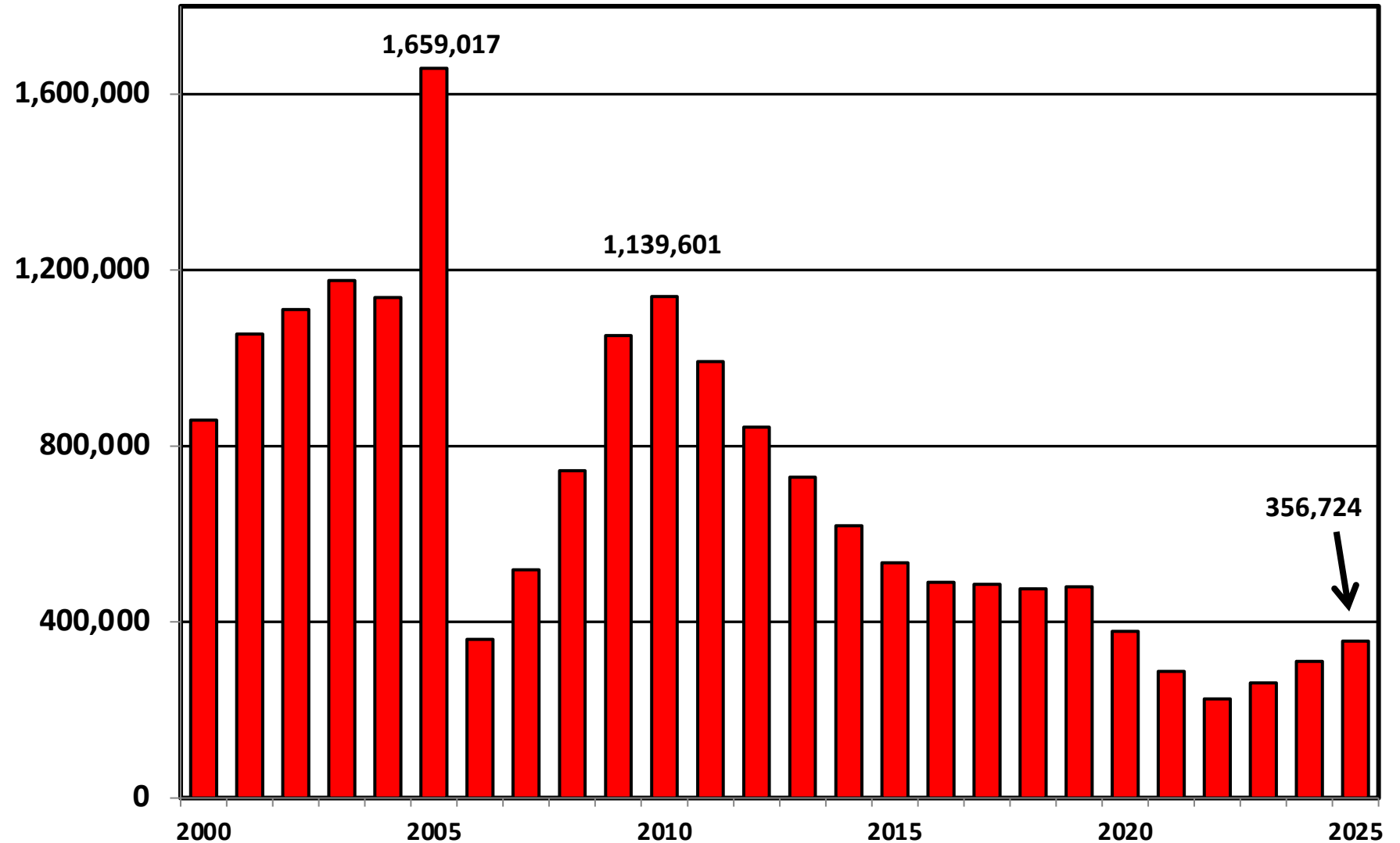
Bankruptcy Filing Trends in the United States



Prepared by the American Bankruptcy Institute
www.abi.org



Chapter 7 Cases Filed Nationwide Calendar Years 2000 - 2025



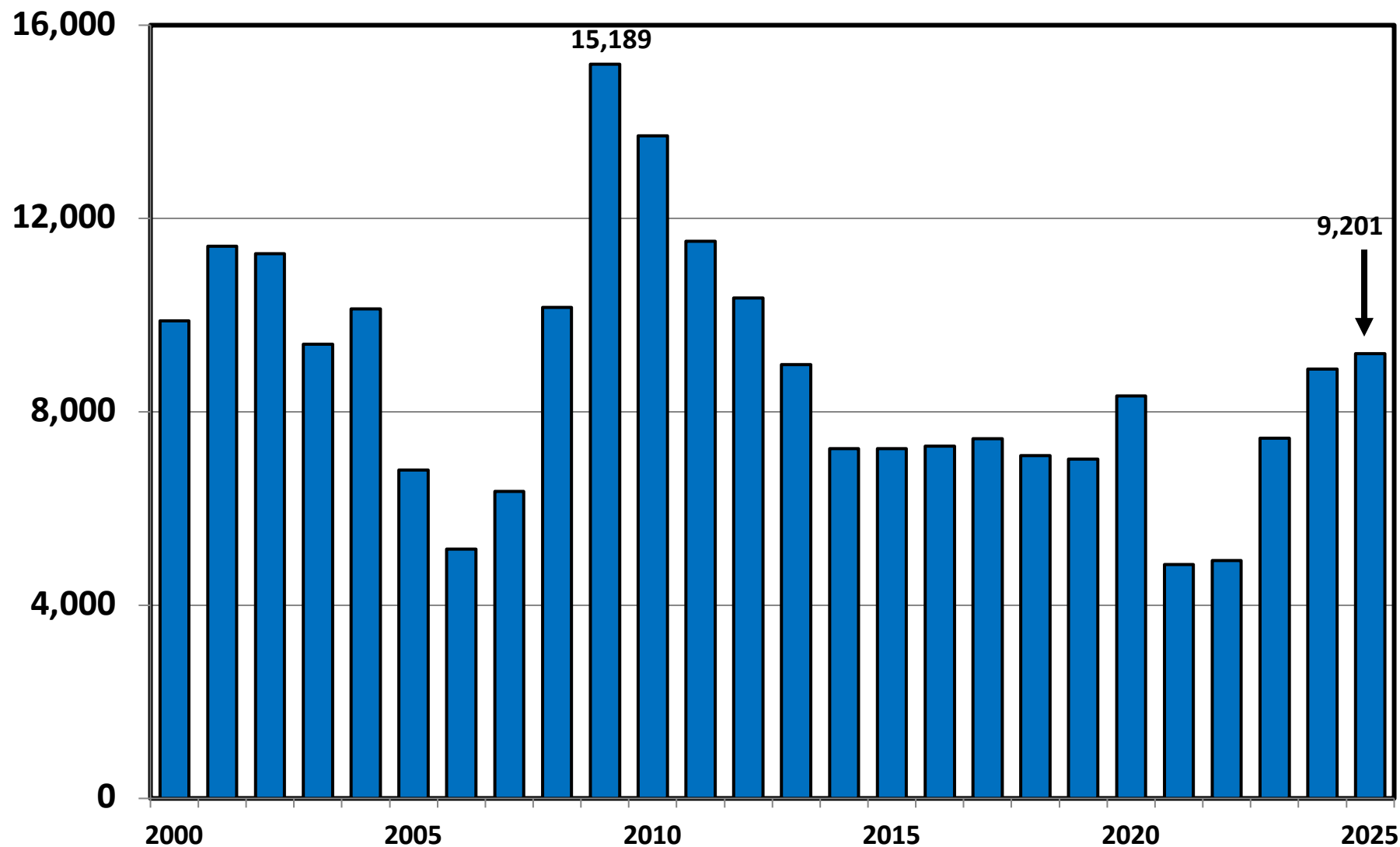
Bankruptcy Filing Trends in the United States



Prepared by the American
Bankruptcy Institute
www.abi.org



Chapter 11 Cases Filed Nationwide Calendar Years 2000 - 2025



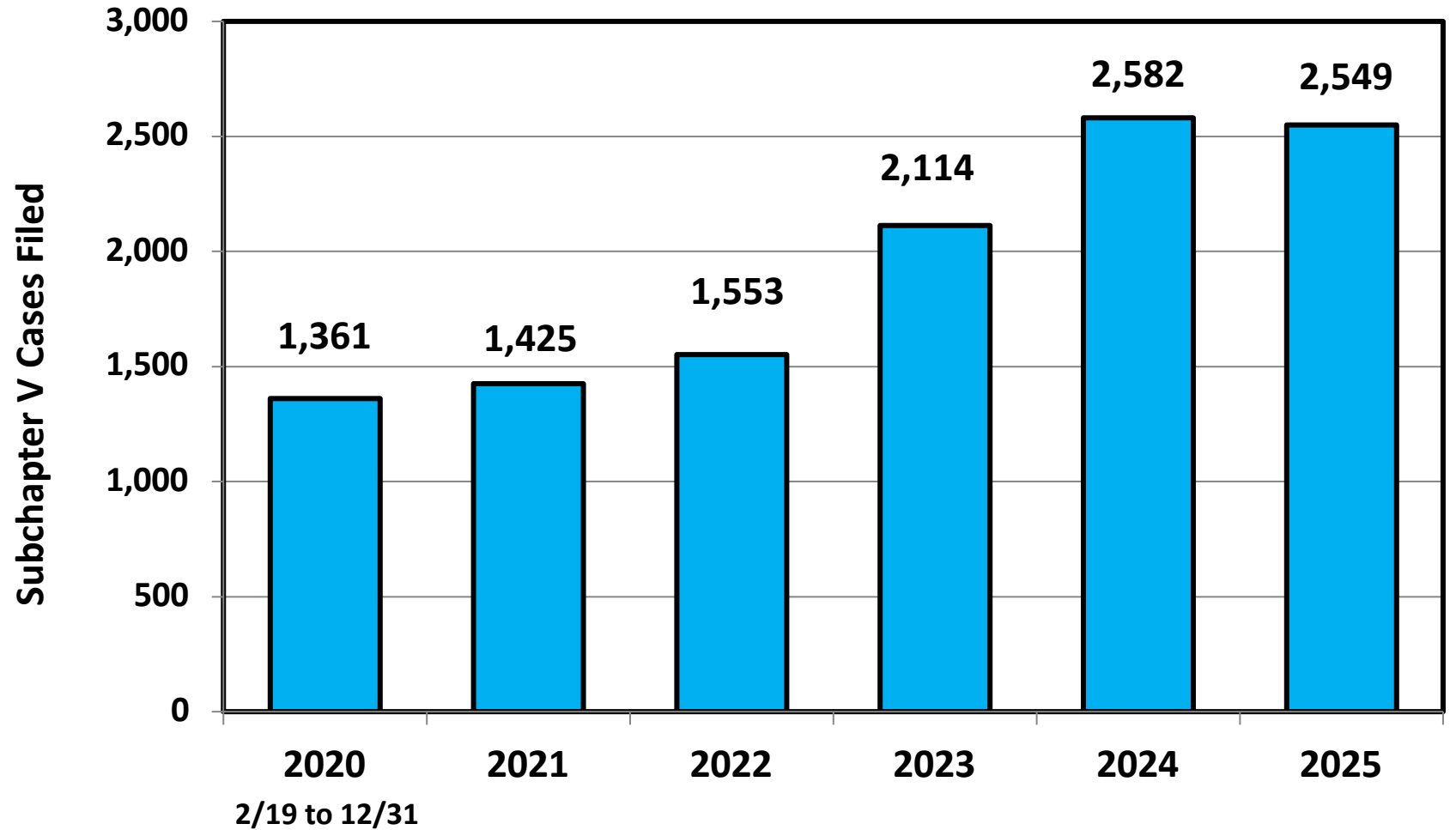
Bankruptcy Filing Trends in the United States



Prepared by the American Bankruptcy Institute
www.abi.org



Subchapter V Cases Filed Nationwide Calendar Years 2020 - 2025



Source: ABI review of PACER records

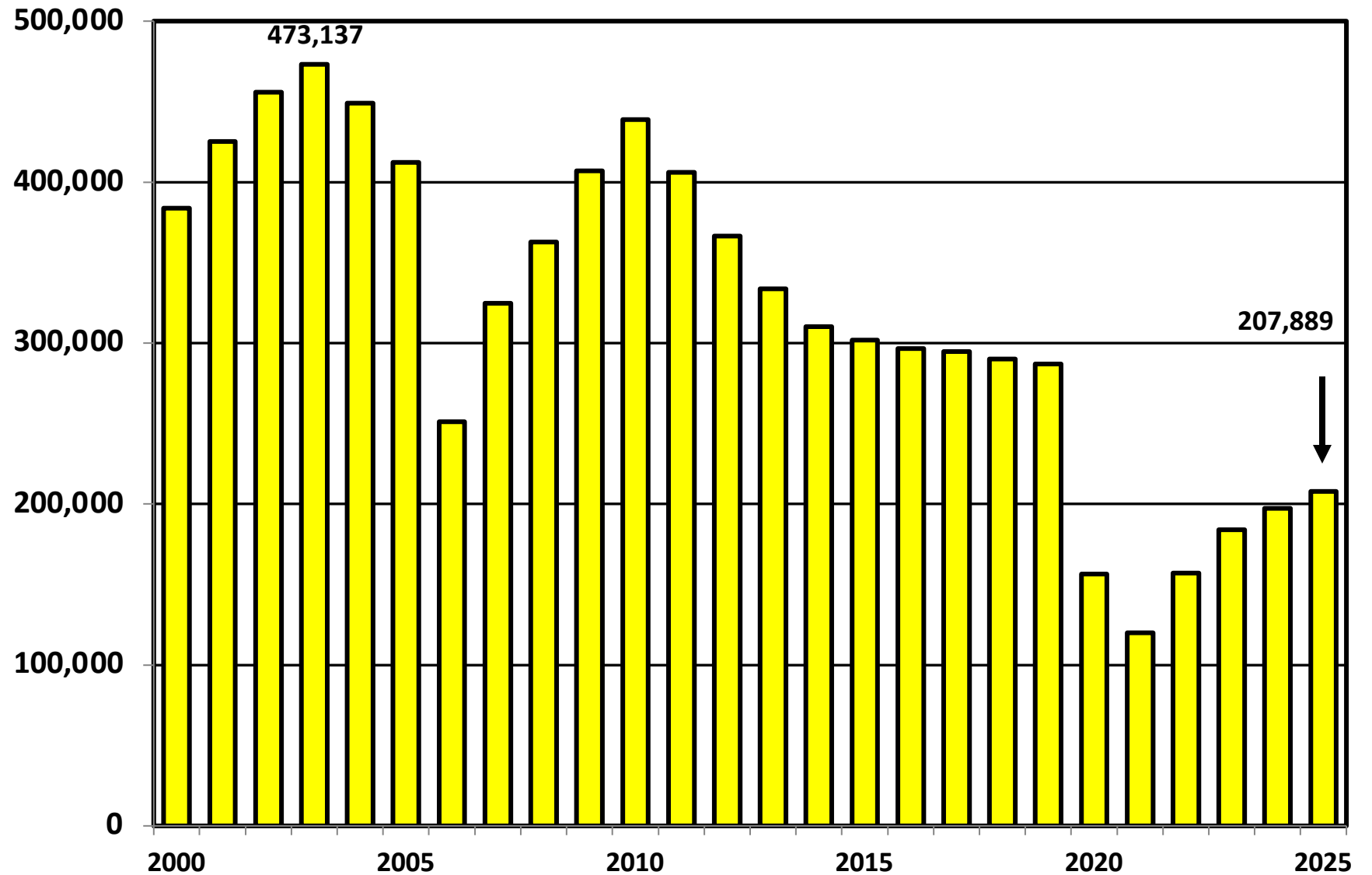
Bankruptcy Filing Trends in the United States



Prepared by the American Bankruptcy Institute
www.abi.org



Chapter 13 Cases Filed Nationwide Calendar Years 2000 – 2025



Bankruptcy Filing Trends in the United States

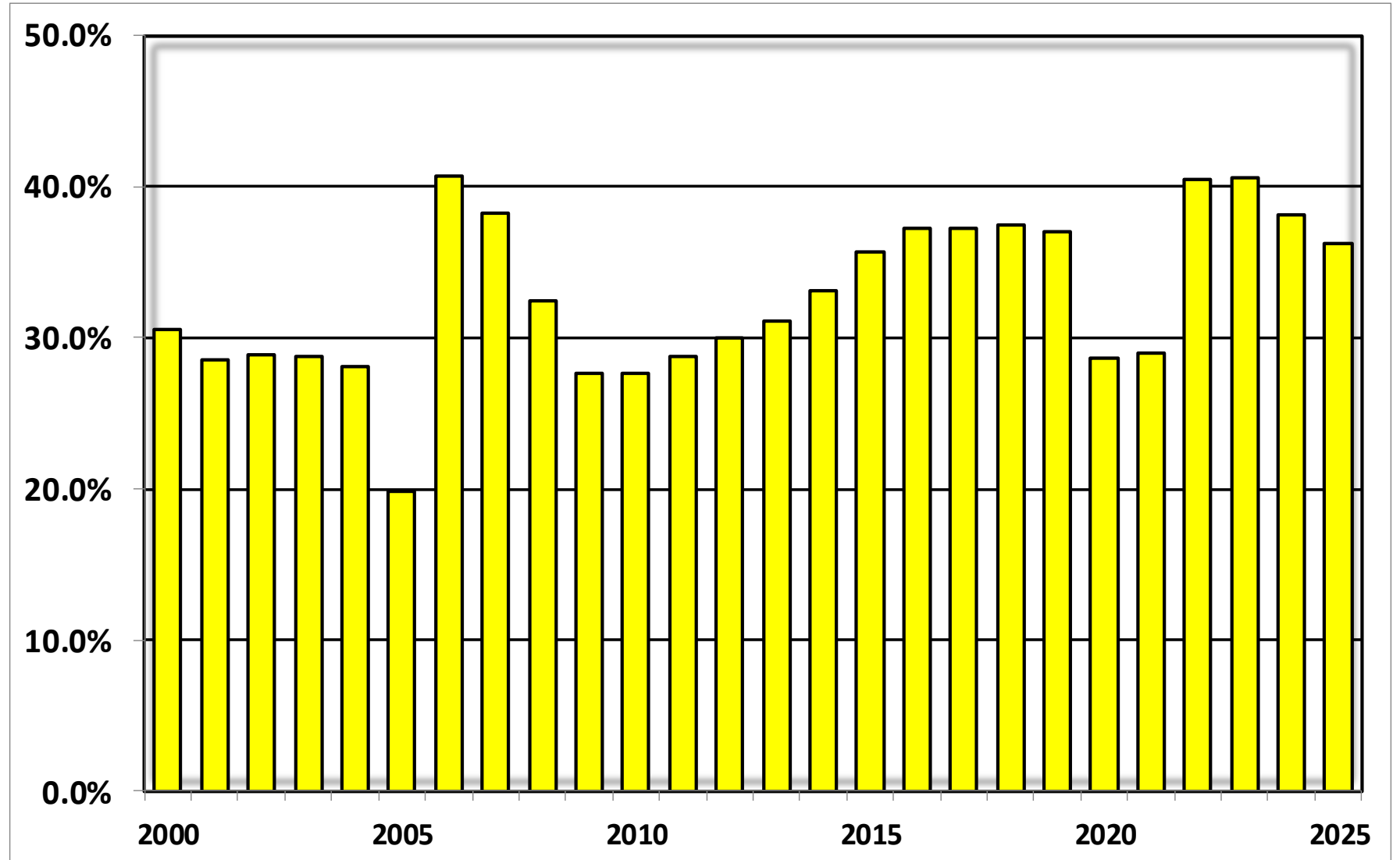


Prepared by the American
Bankruptcy Institute
www.abi.org



AMERICAN
BANKRUPTCY
INSTITUTE

Percent of Cases Filed as Chapter 13 Calendar Years 2000 - 2025



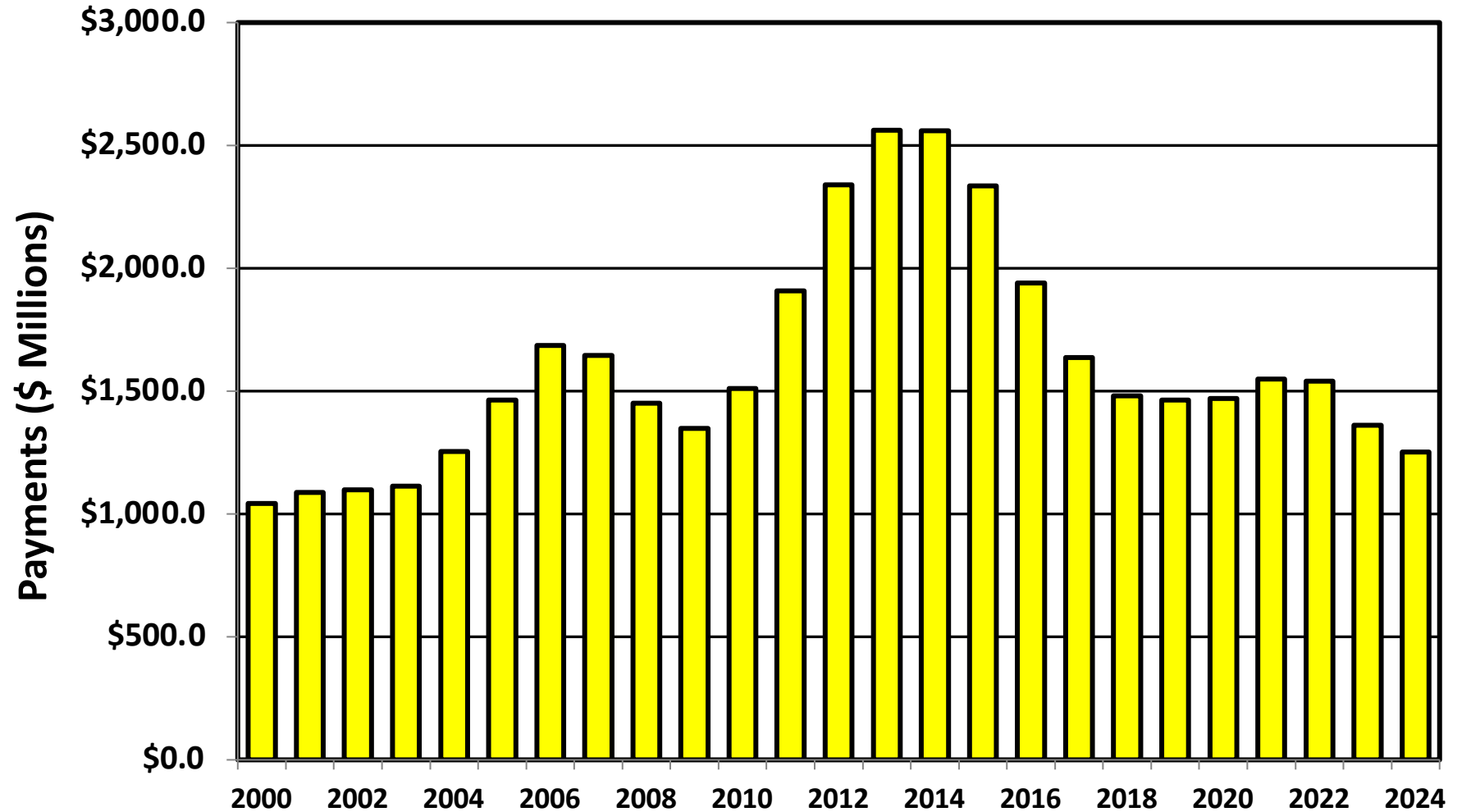
Bankruptcy Filing Trends in the United States



Prepared by the American Bankruptcy Institute
www.abi.org



Chapter 13 Cases Amount (in Millions) Paid to Unsecured Creditors Fiscal Years 2000 - 2024



Source: Executive Office for United States Trustees
(Does not include cases in North Carolina and Alabama)

Bankruptcy Filing Trends in the United States

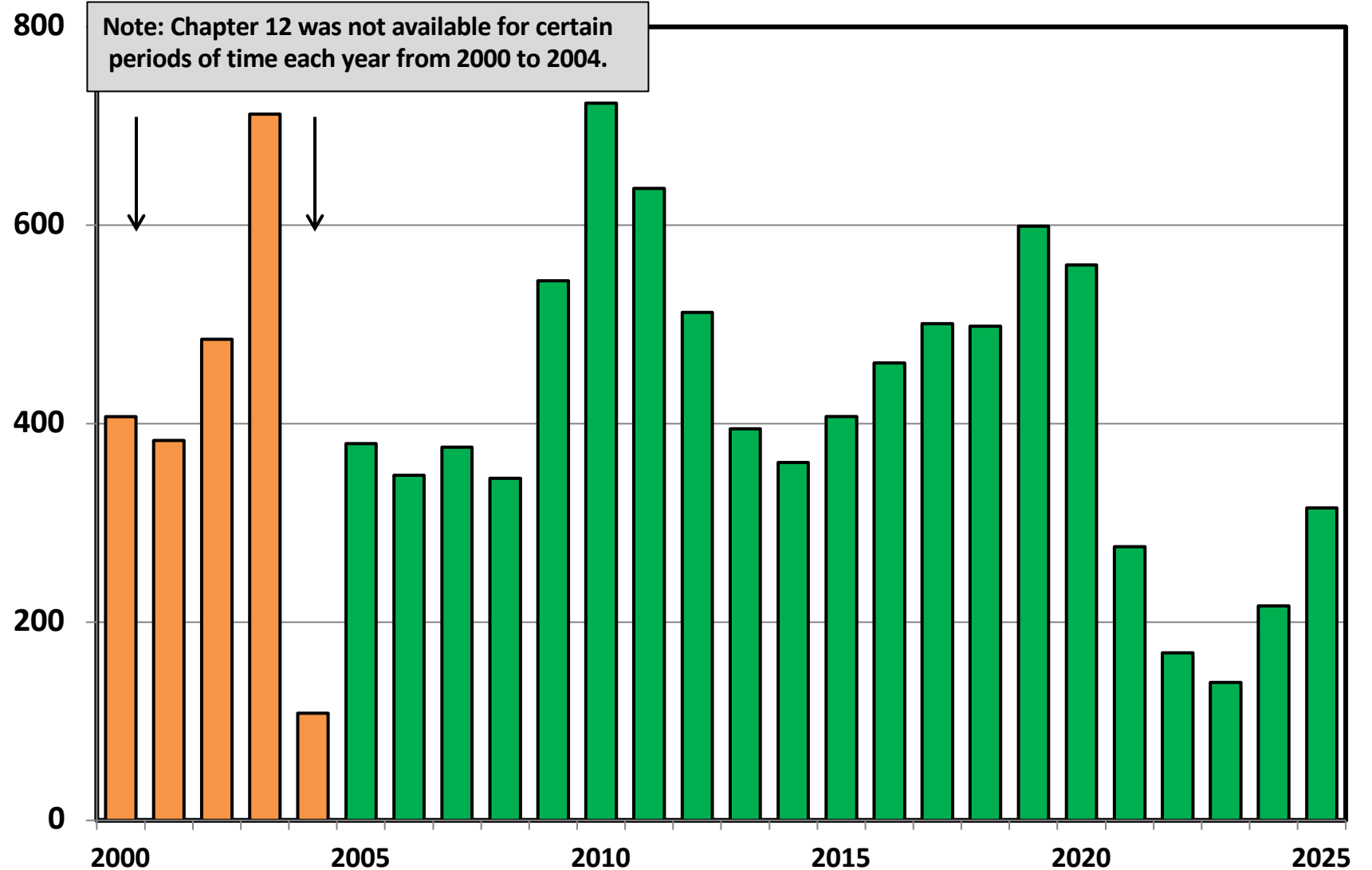


Prepared by the American Bankruptcy Institute
www.abi.org



AMERICAN BANKRUPTCY INSTITUTE

Chapter 12 Cases Filed Nationwide 2000 - 2025



Bankruptcy Filing Trends in the United States

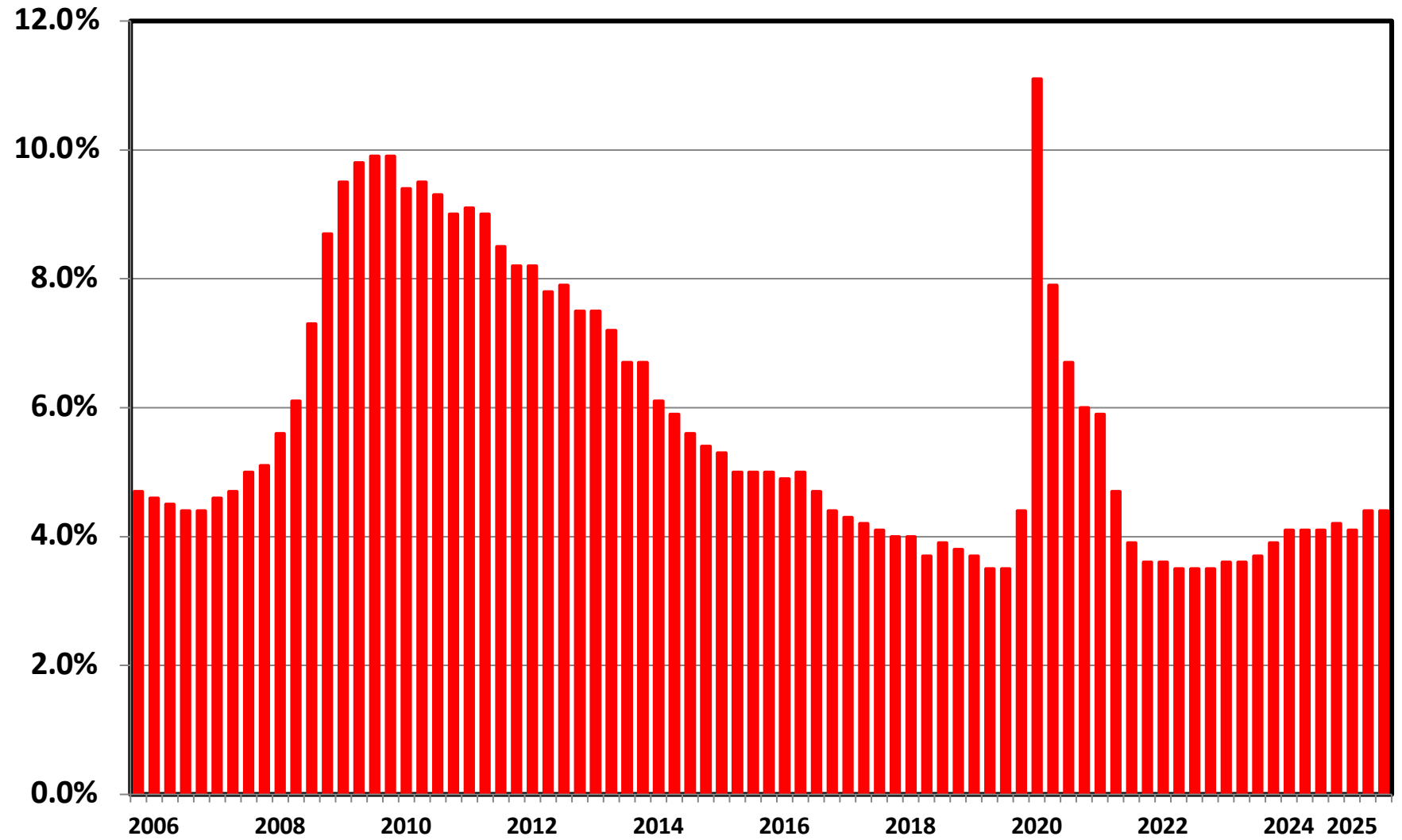


Prepared by the American Bankruptcy Institute
www.abi.org



AMERICAN BANKRUPTCY INSTITUTE

Unemployment Rate By Quarter 2006 - 2025



Source: Bureau of Labor Statistics

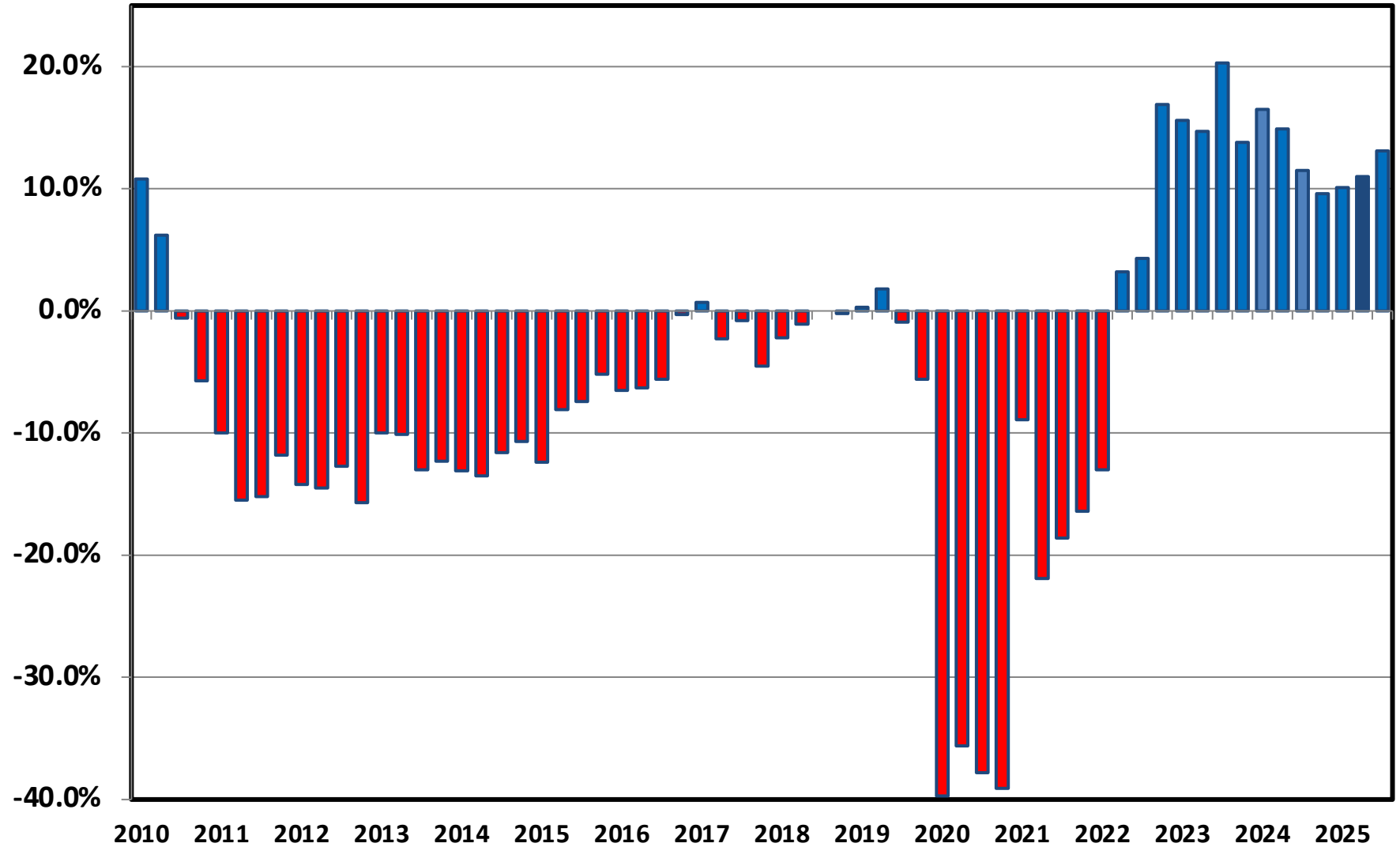
Bankruptcy Filing Trends in the United States



Prepared by the American
Bankruptcy Institute
www.abi.org



Filing Trends By Quarter (Percent Change From Same Quarter One Year Prior)



Bankruptcy Filing Trends in the United States



Prepared by the American Bankruptcy Institute
www.abi.org



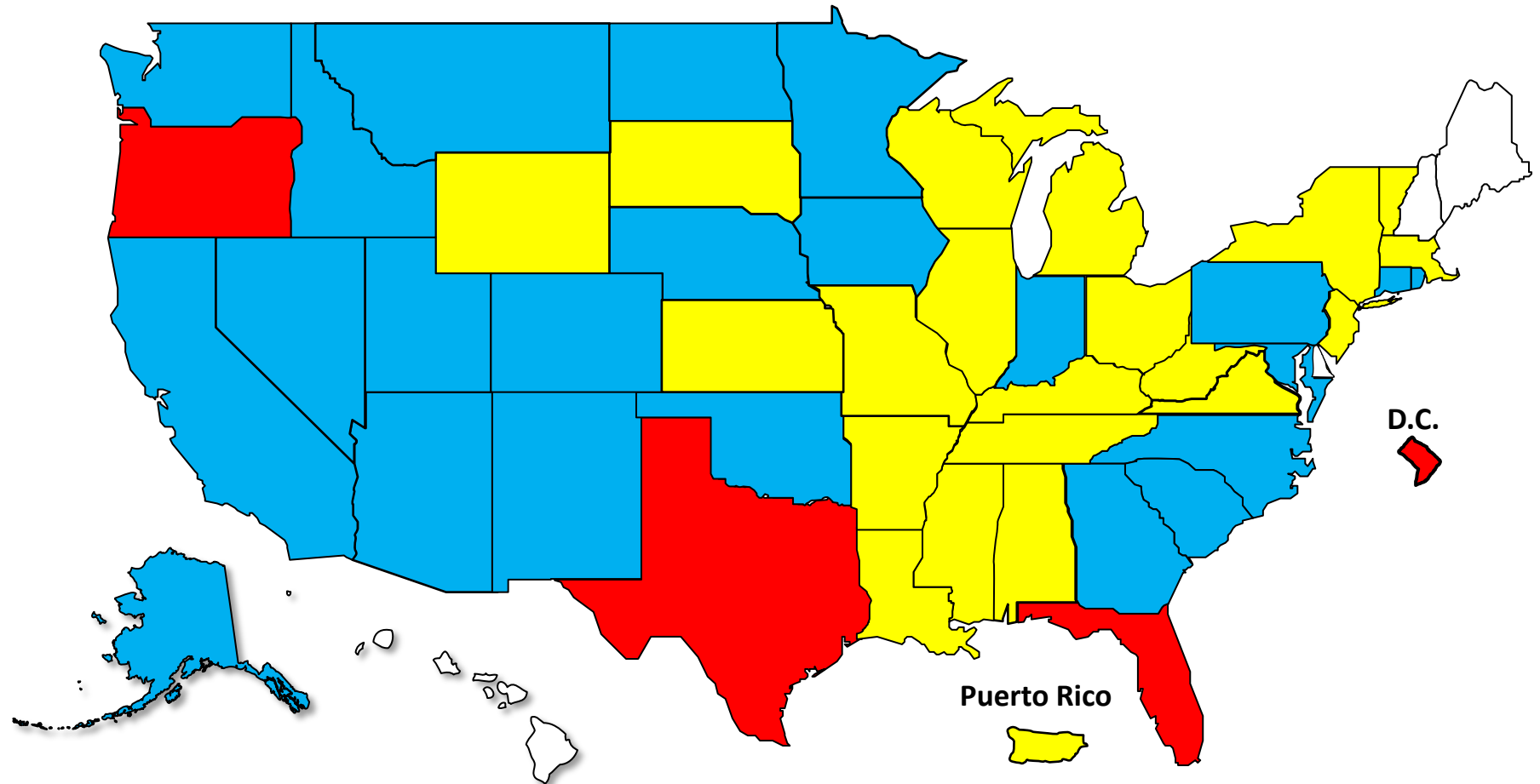
AMERICAN BANKRUPTCY INSTITUTE

Bankruptcy Filing Trends

Calendar Year 2025 vs. 2024

National Average = 11.0% Increase

+20% or More **+**10.0% to 19.9% **+**0% to 9.9% Decline



Bankruptcy Filing Trends in the United States



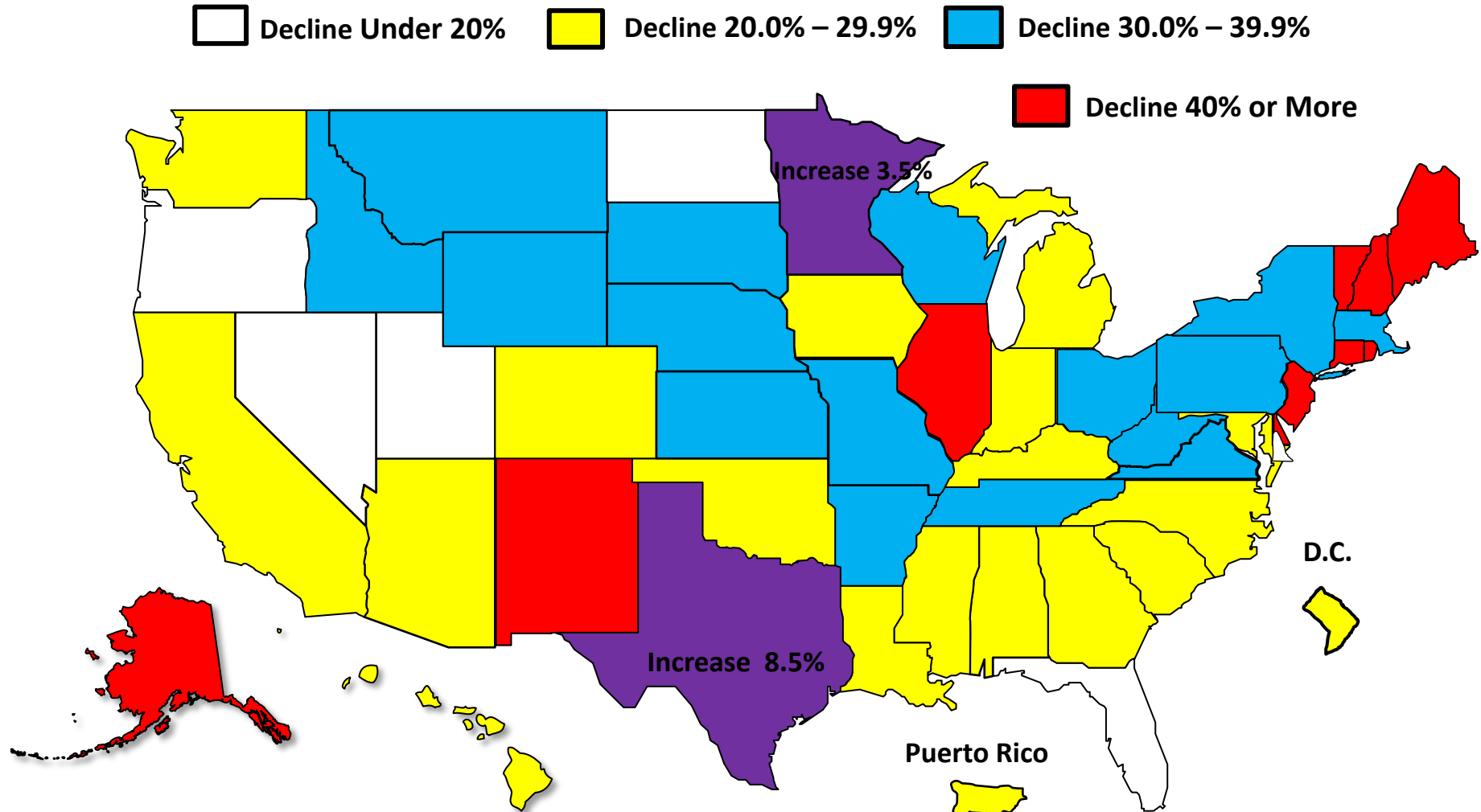
Prepared by the American Bankruptcy Institute
www.abi.org



AMERICAN BANKRUPTCY INSTITUTE

Bankruptcy Filing Trends Since the Pandemic Calendar Year 2025 vs. 2019

National Average = 25.9% Decrease



Bankruptcy Filing Trends in the United States



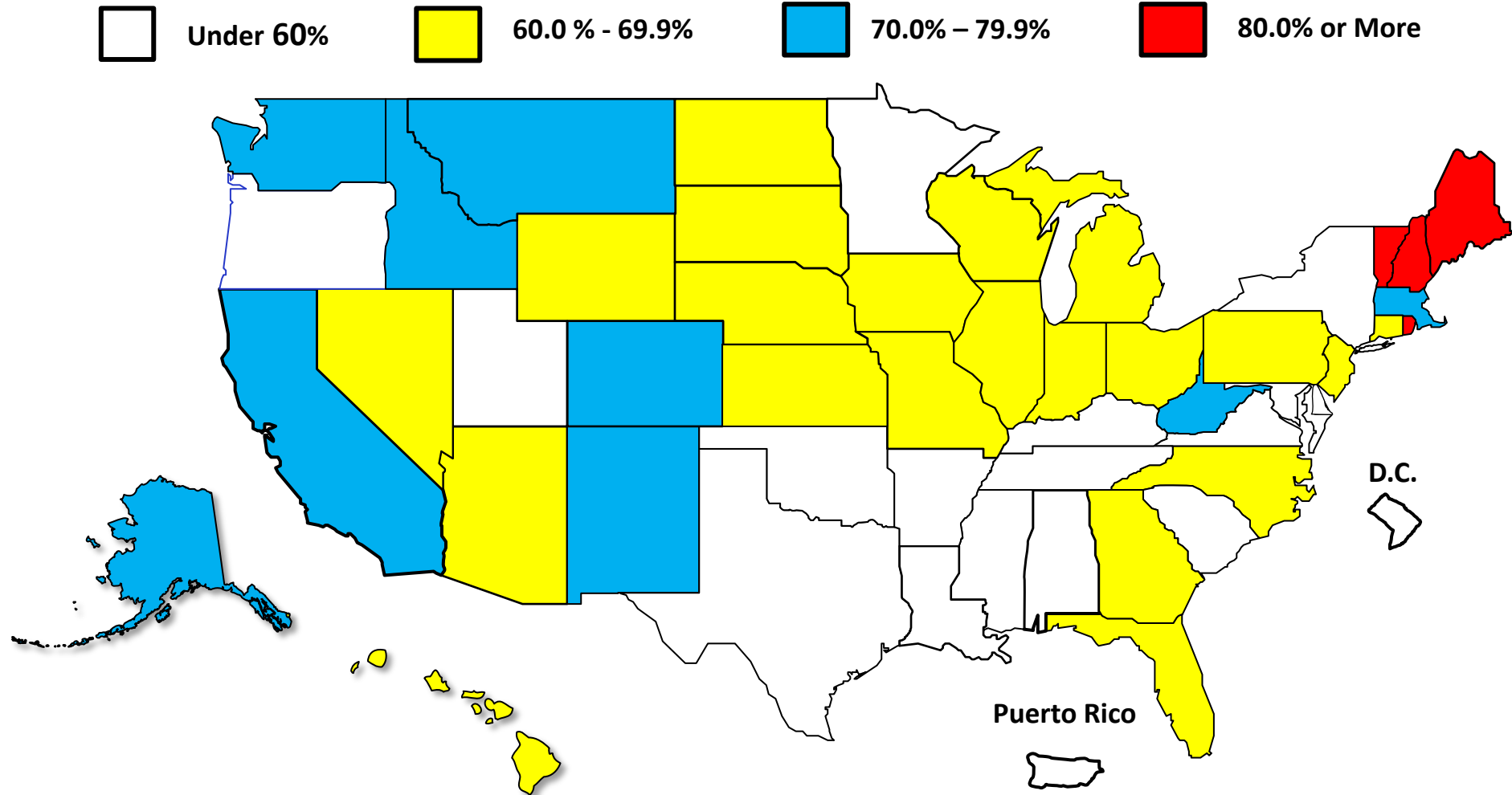
Prepared by the American Bankruptcy Institute
www.abi.org



AMERICAN BANKRUPTCY INSTITUTE

Percent Change in Total Filings Calendar Year 2025 Compared to 2010 (National Average = 63.9% Decrease)

Amount of Decrease





AMERICAN BANKRUPTCY INSTITUTE

Prepared by the American Bankruptcy Institute. www.abi.org