

Bankruptcy Filing Trends in Rhode Island 2000-2025



Prepared by the American Bankruptcy Institute. www.abi.org



Bankruptcy Filing Trends in Rhode Island: 2000-2025



Rhode Island

State at a Glance		
	Rhode Island	National
Population (7/1/2025)	1,114,521	341,784,857
- Change since April 2020	1.6%	3.1%
- Foreign Born	15.3%	14.1%
Size (Square Miles)	1,034	3,533,038
Median Household Income	\$87,796	\$80,734
Persons per Household	2.39	2.53
Per Capita Income	\$47,150	\$44,673
Median Home Value	\$404,200	\$332,700
Homeownership Rate	63.6%	65.2%
High School Graduate (or Higher)	89.7%	89.6%
College Graduate (or Higher)	37.7%	35.7%
Disabled	9.9%	9.3%
No Health Insurance	5.6%	9.6%
In Poverty	12.2%	10.6%

Source: U.S. Census Bureau January 2026

Prepared by the American
Bankruptcy Institute
www.abi.org



AMERICAN
BANKRUPTCY
INSTITUTE

Bankruptcy Filing Trends in Rhode Island: 2000-2025



Prepared by the American
Bankruptcy Institute
www.abi.org



AMERICAN
BANKRUPTCY
INSTITUTE

Bankruptcy Filings in Rhode Island Calendar Years 2000 - 2025					
Year	Total	Chapter 7	Chapter 11	Chapter 13	Other Cases*
2025	1,077	786	9	277	5
2024	968	672	8	288	0
2023	843	640	5	198	0
2022	793	590	3	200	0
2021	992	832	3	157	0
2020	1,413	1,202	2	209	0
2019	2,036	1,540	6	490	0
2018	2,165	1,613	4	548	0
2017	2,271	1,739	12	520	0
2016	2,276	1,724	12	540	0
2015	2,569	2,094	9	466	0
2014	2,929	2,472	3	453	1
2013	3,528	2,967	6	555	0
2012	4,108	3,474	29	605	0
2011	4,931	4,053	10	867	1
2010	5,500	4,717	28	755	0
2009	5,096	4,361	20	714	1
2008	4,300	3,574	11	715	0
2007	2,817	2,182	11	624	0
2006	1,621	1,288	4	329	0
2005	5,839	5,517	18	302	2
2004	4,142	3,864	15	263	0
2003	4,557	4,206	7	344	0
2002	4,907	4,502	8	397	0
2001	4,883	4,483	11	389	0
2000	4,457	4,146	10	301	0
*Chapters 9, 12 and 15					

Bankruptcy Filing Trends in Rhode Island: 2000-2025



Prepared by the American
Bankruptcy Institute
www.abi.org



AMERICAN
BANKRUPTCY
INSTITUTE

Business Bankruptcy Cases Filed - Rhode Island					
Years Ended December 31, 2000 - 2025					
CALENDAR YEAR	TOTAL FILINGS	CHAPTER 7	CHAPTER 11	CHAPTER 13	OTHER CASES*
2025	50	34	9	2	5
2024	41	31	8	2	0
2023	28	21	5	2	0
2022	29	25	2	2	0
2021	34	29	3	2	0
2020	31	28	2	1	0
2019	64	55	5	4	0
2018	69	60	4	5	0
2017	82	66	12	4	0
2016	74	56	10	8	0
2015	96	86	6	4	0
2014	90	80	3	6	1
2013	120	107	5	8	0
2012	173	129	28	16	0
2011	144	123	10	10	1
2010	169	132	26	11	0
2009	170	138	19	12	1
2008	144	119	11	14	0
2007	105	87	11	7	0
2006	48	42	3	3	0
2005	136	112	18	4	2
2004	74	58	12	4	0
2003	48	40	7	1	0
2002	65	54	7	4	0
2001	64	49	10	5	0
2000	74	60	10	4	0
* Chapters 9, 12 and 15					

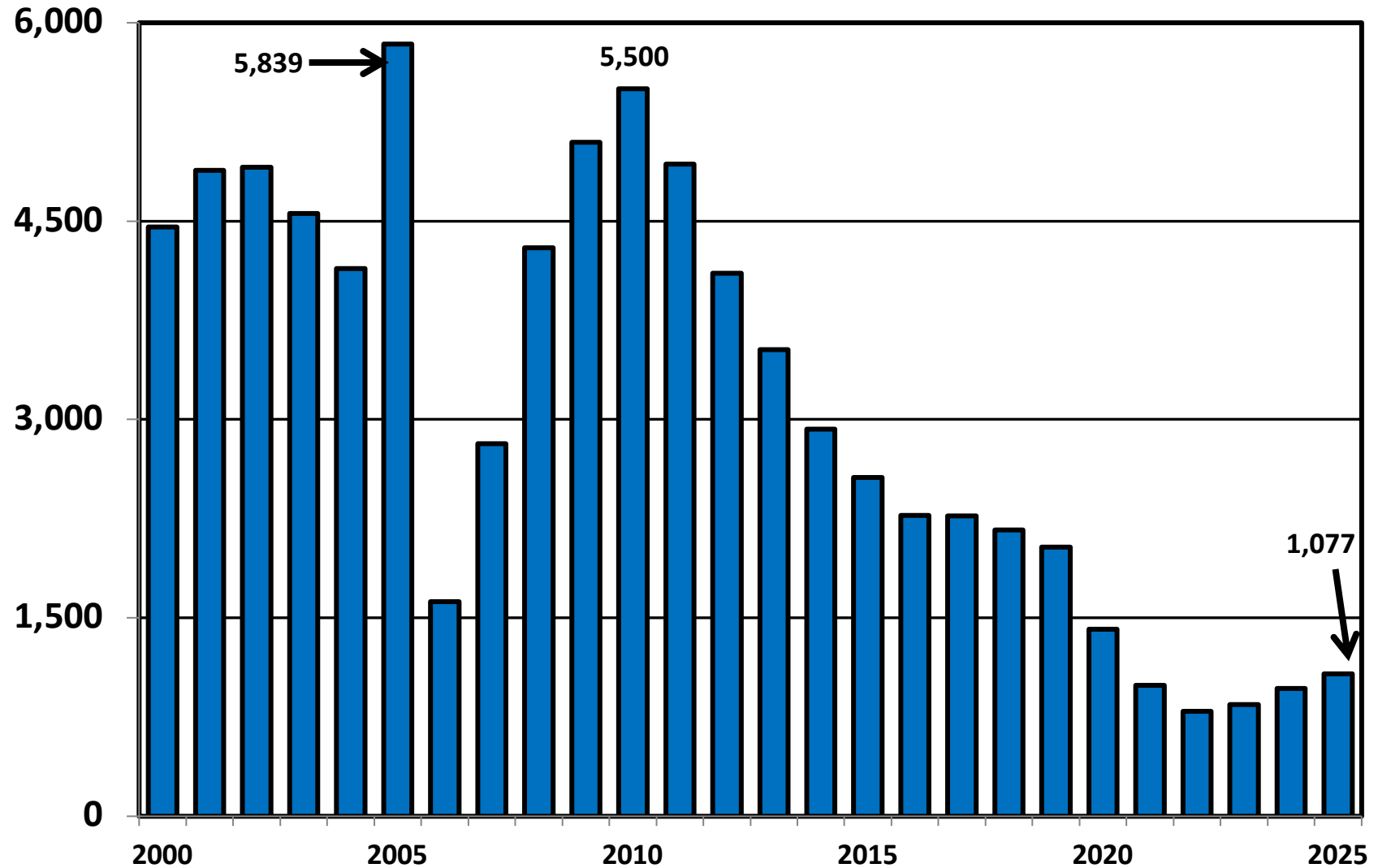
Bankruptcy Filing Trends in Rhode Island: 2000-2025



Prepared by the American Bankruptcy Institute
www.abi.org

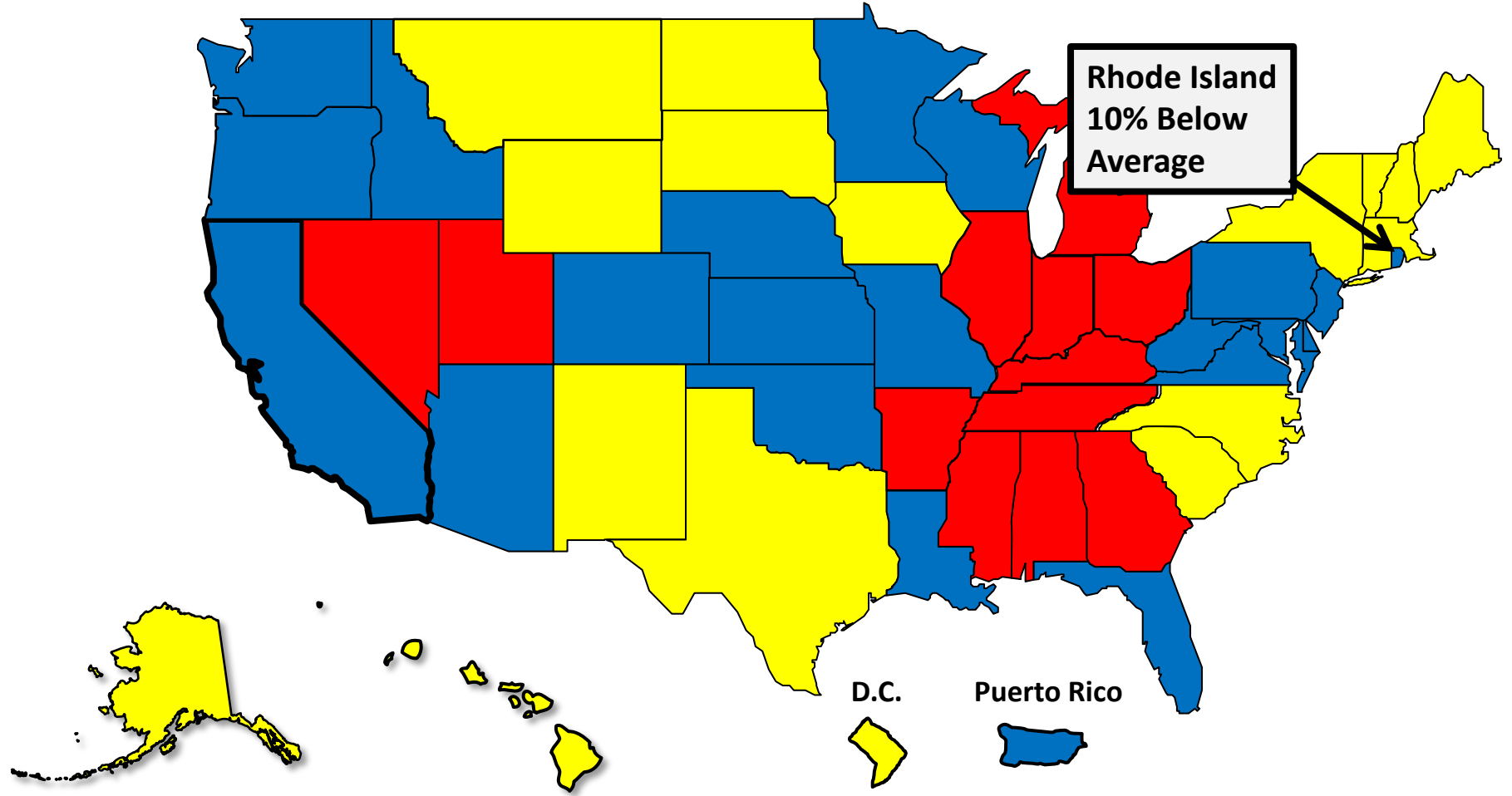


District of Rhode Island Total Bankruptcy Cases Filed Calendar Years 2000 - 2025



Bankruptcy Filing Trends in Rhode Island: 2000-2025

Total Filings Relative to Population 2000 - 2025



Prepared by the American Bankruptcy Institute
www.abi.org



Bankruptcy Filing Trends in Rhode Island: 2000-2025

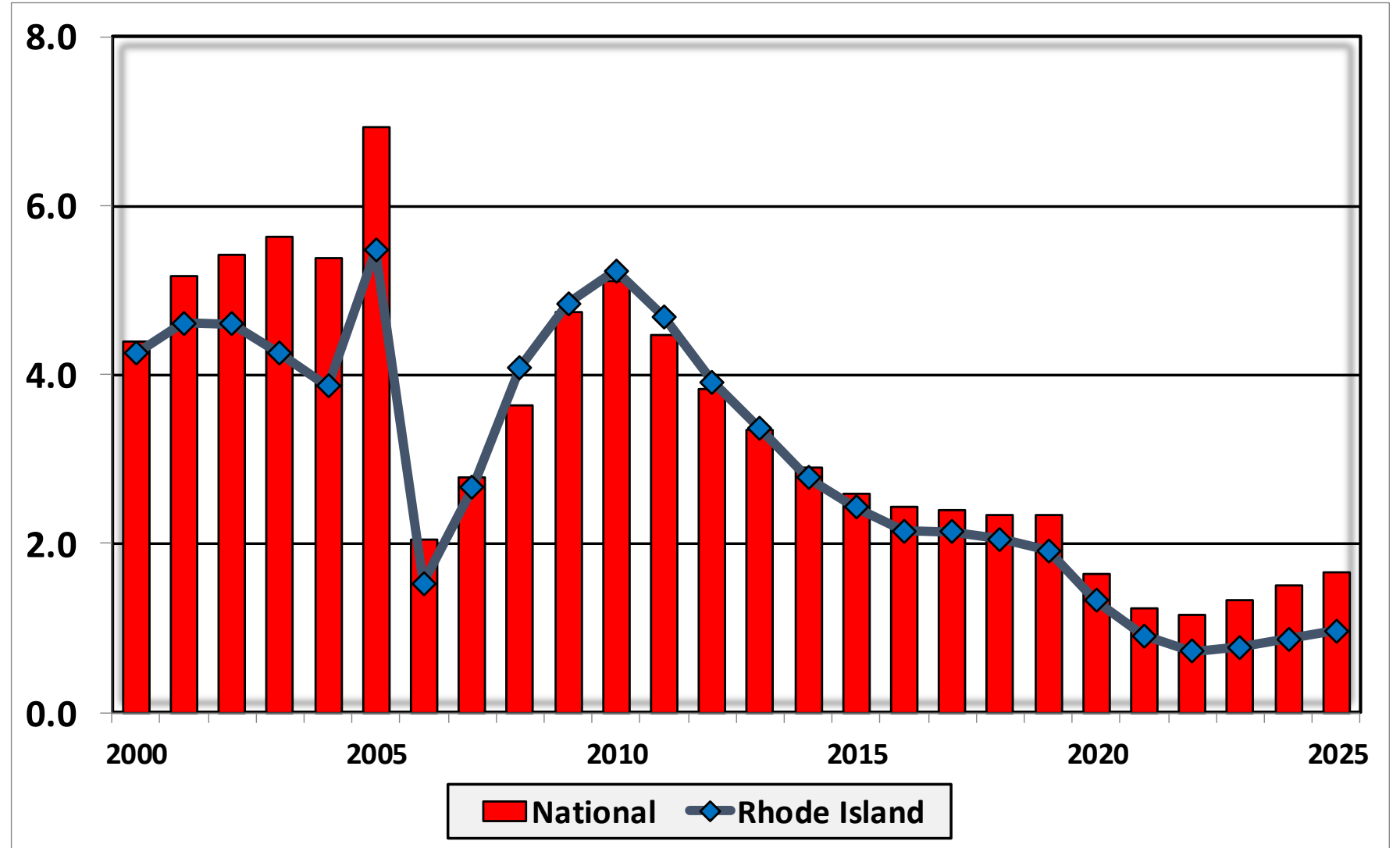


Prepared by the American Bankruptcy Institute
www.abi.org



AMERICAN BANKRUPTCY INSTITUTE

Bankruptcy Filings per 1,000 Population Rhode Island vs. National Average 2000 - 2025



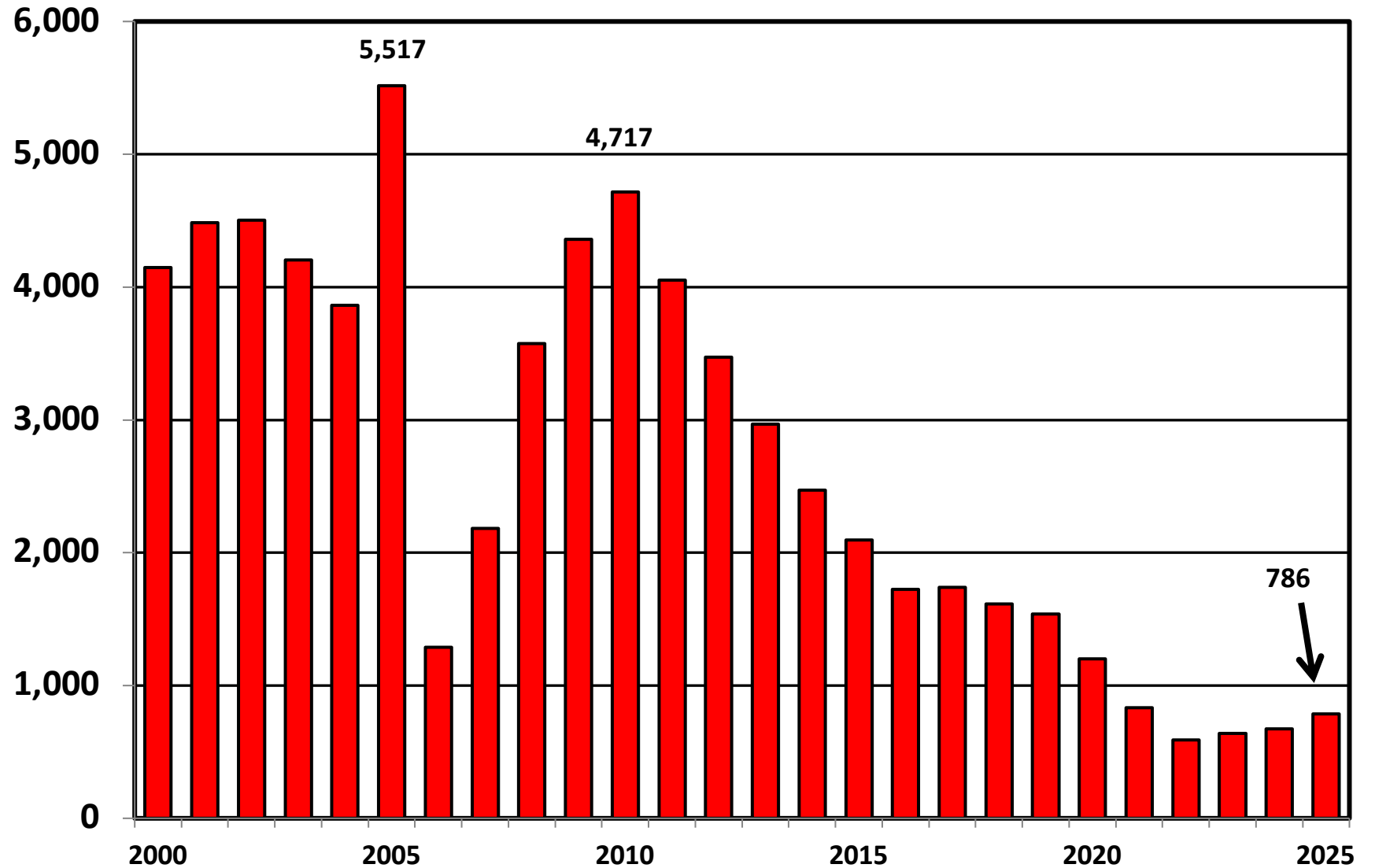
Bankruptcy Filing Trends in Rhode Island: 2000-2025



Prepared by the American Bankruptcy Institute
www.abi.org



Chapter 7 Cases Filed in Rhode Island Calendar Years 2000 - 2025



Bankruptcy Filing Trends in Rhode Island: 2000-2025

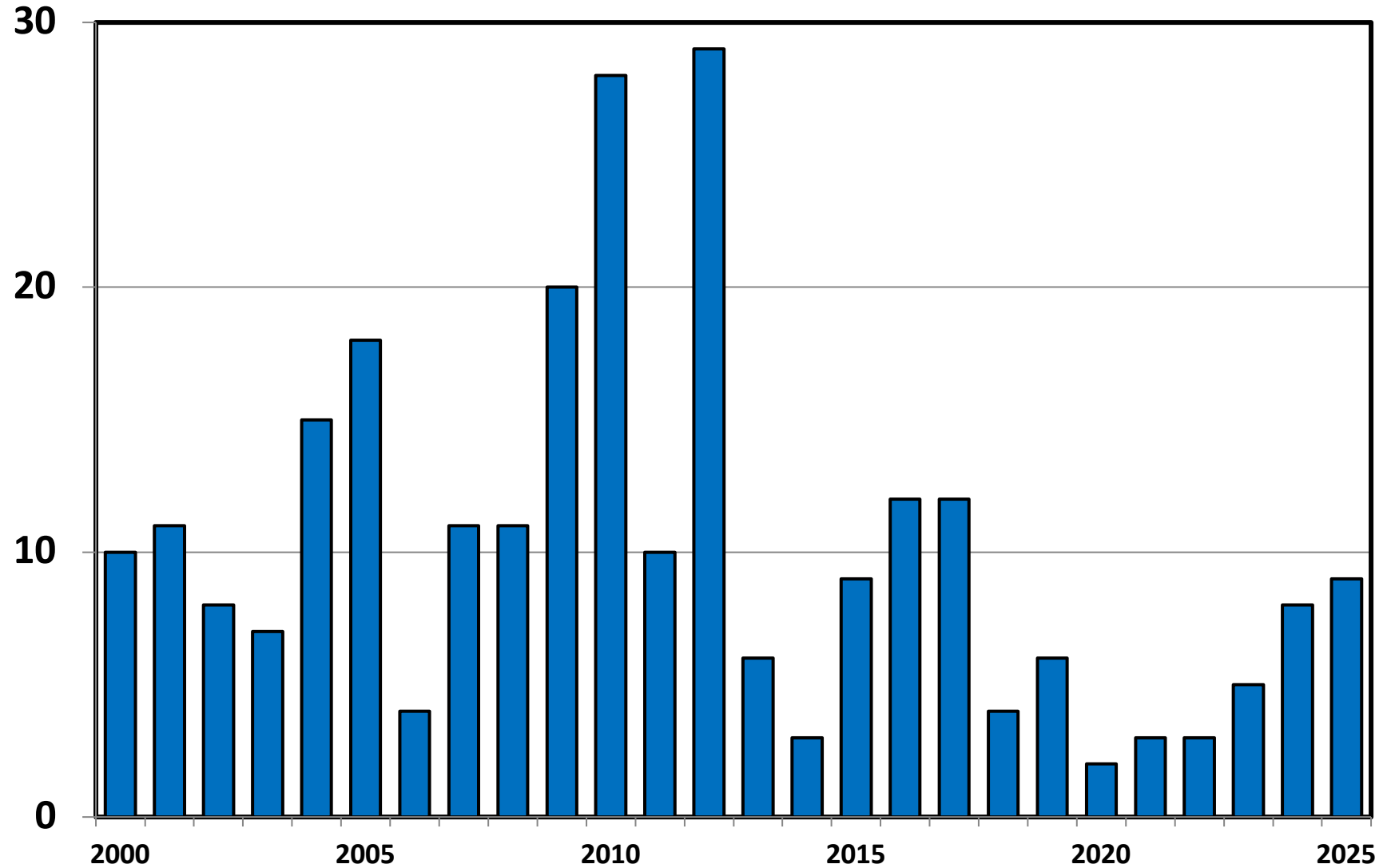


Prepared by the American
Bankruptcy Institute
www.abi.org



AMERICAN
BANKRUPTCY
INSTITUTE

Chapter 11 Cases Filed in Rhode Island 2000 - 2025



Bankruptcy Filing Trends in Rhode Island: 2000-2025

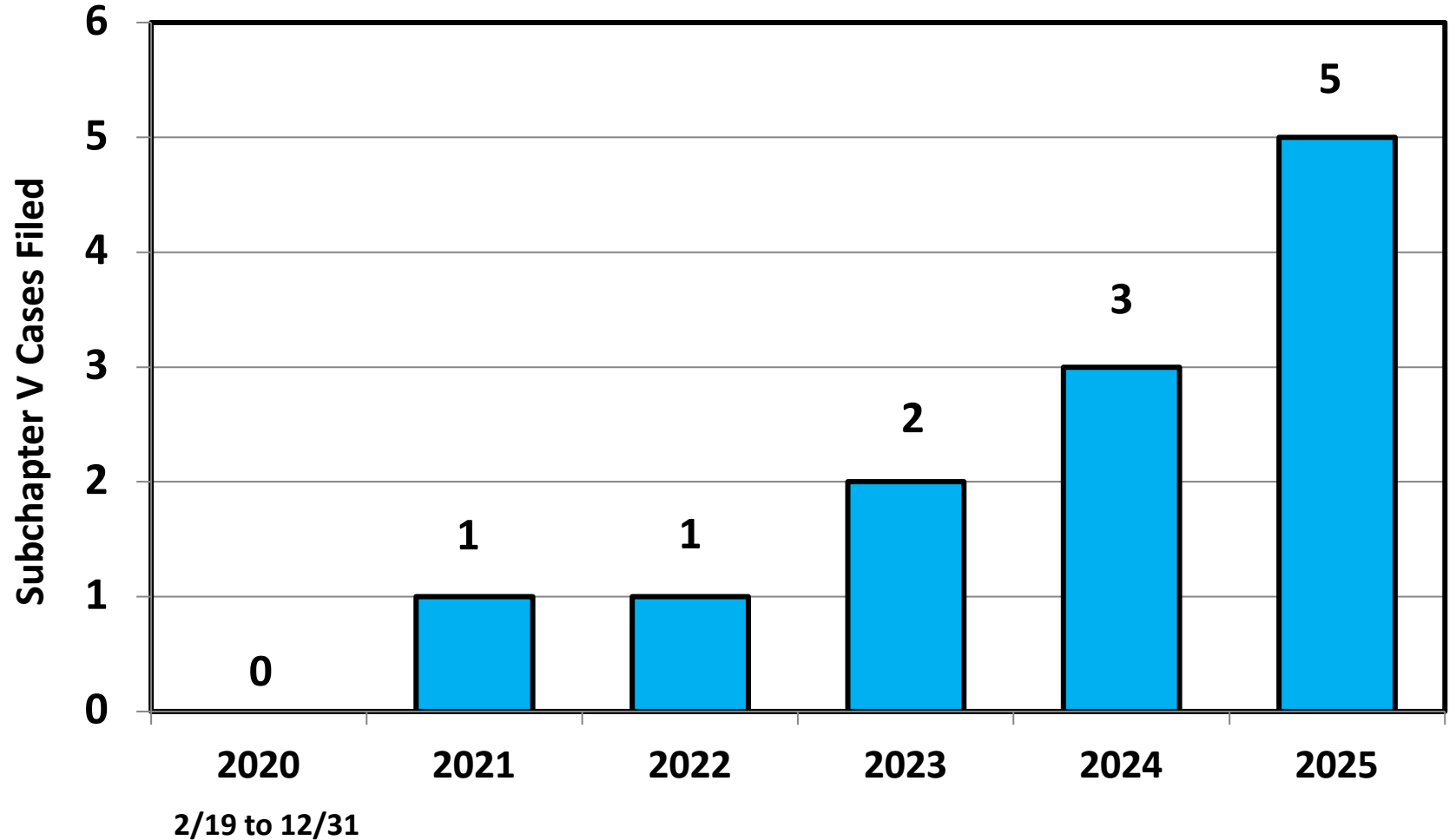


Prepared by the American
Bankruptcy Institute
www.abi.org



AMERICAN
BANKRUPTCY
INSTITUTE

Subchapter V Cases Filed in Rhode Island Calendar Years 2020 - 2025



Source: ABI review of PACER records

Bankruptcy Filing Trends in Rhode Island: 2000-2025

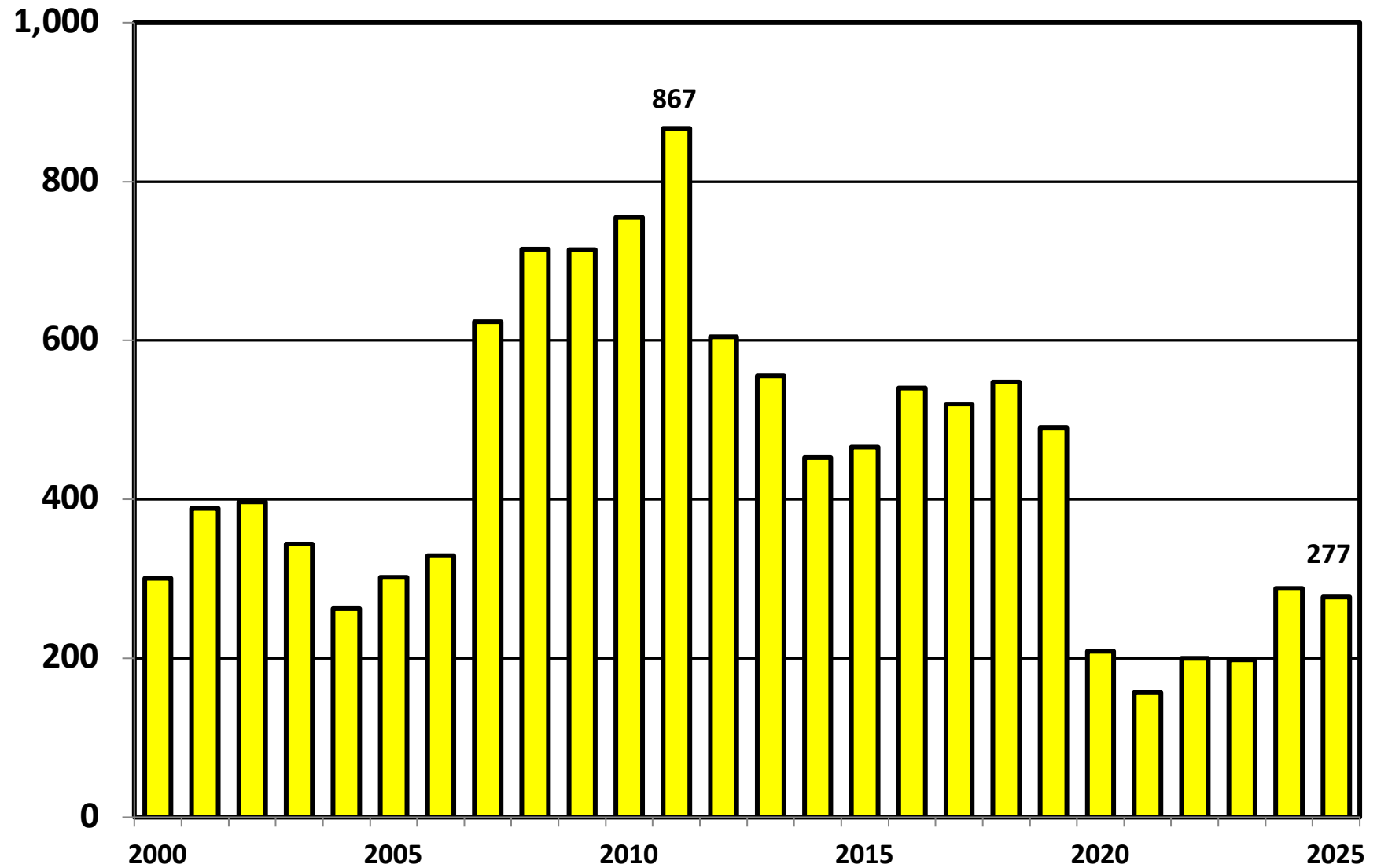


Prepared by the American
Bankruptcy Institute
www.abi.org



AMERICAN
BANKRUPTCY
INSTITUTE

Chapter 13 Cases Filed in Rhode Island 2000 – 2025



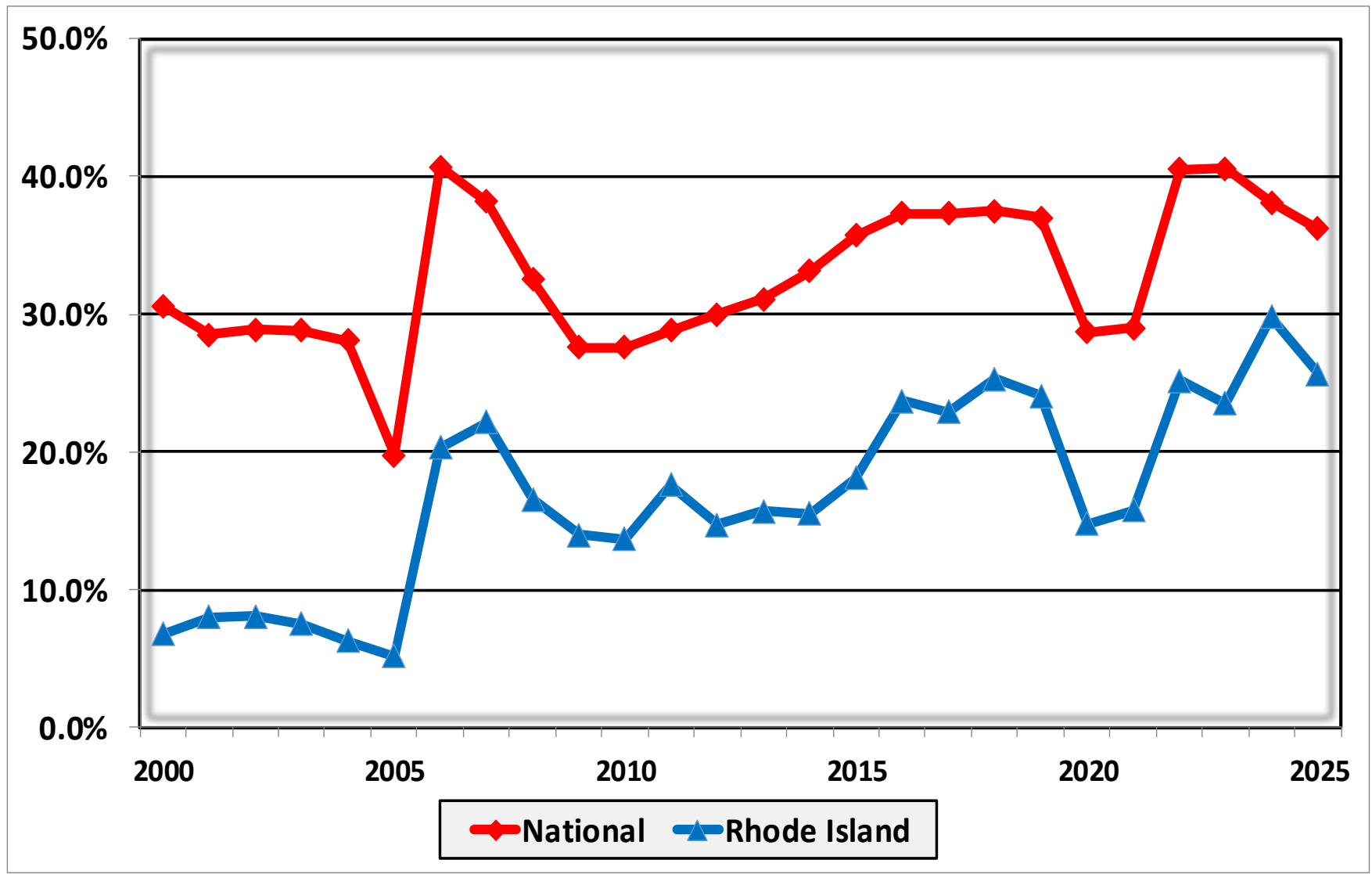
Bankruptcy Filing Trends in Rhode Island: 2000-2025



Prepared by the American Bankruptcy Institute
www.abi.org



Percent of Cases Filed as Chapter 13 Calendar Years 2000 – 2025



Bankruptcy Filing Trends in Rhode Island: 2000-2025

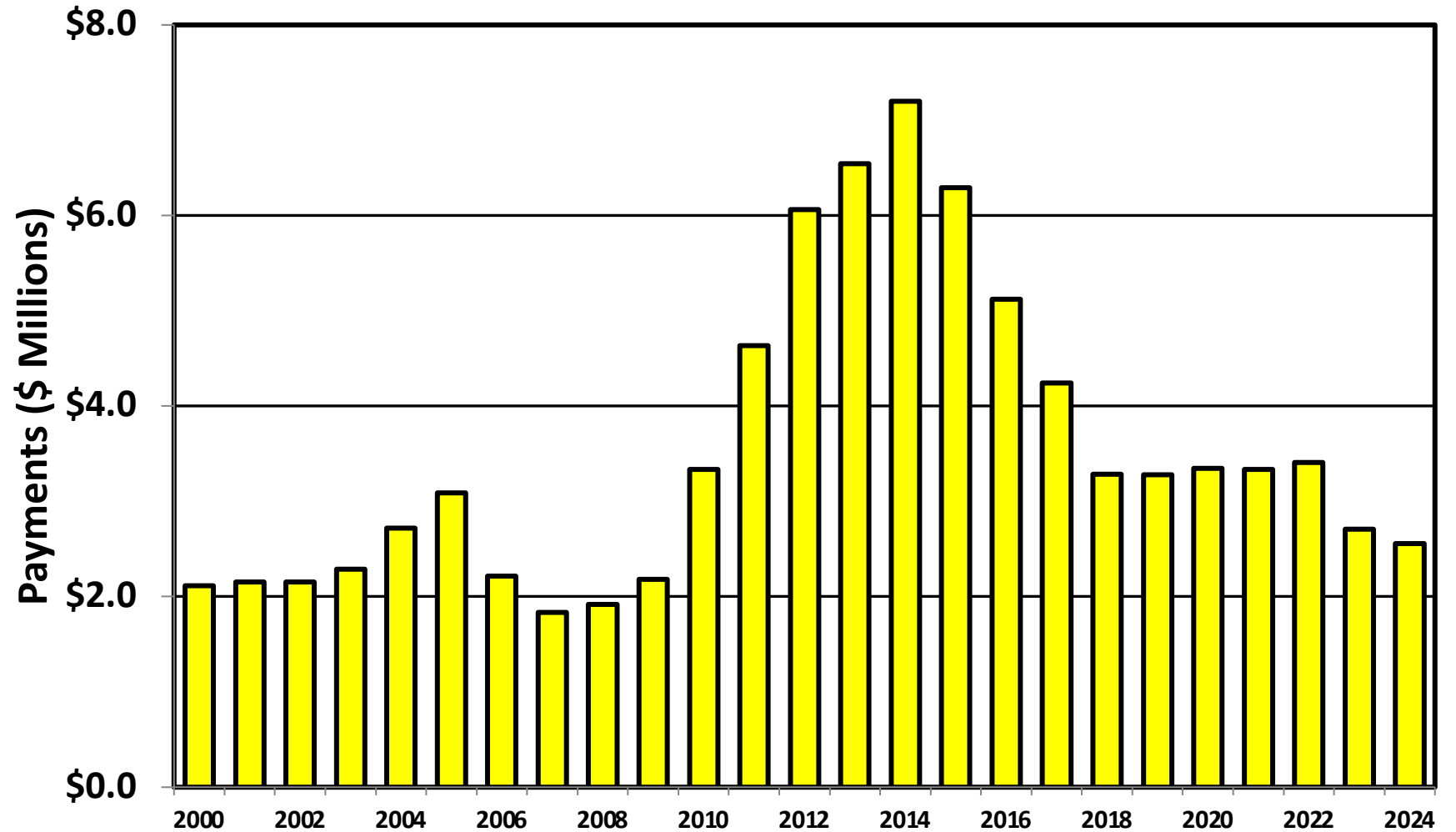


Prepared by the American
Bankruptcy Institute
www.abi.org



AMERICAN
BANKRUPTCY
INSTITUTE

Chapter 13 Cases in Rhode Island Amount (in Millions) Paid to Unsecured Creditors Fiscal Years 2000 - 2024



Source: Executive Office for United States Trustees

Bankruptcy Filing Trends in Rhode Island: 2000-2025

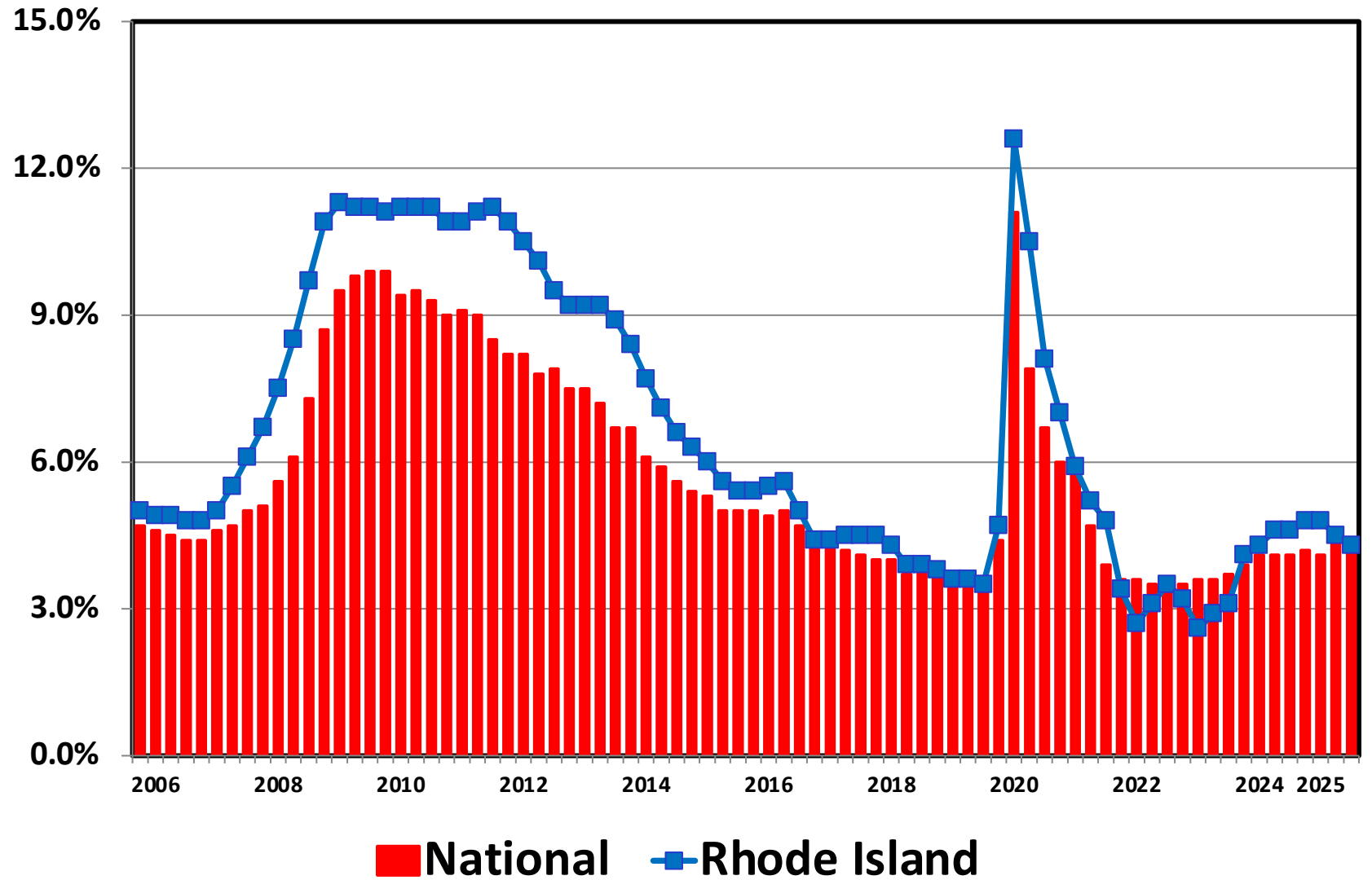


Prepared by the American Bankruptcy Institute
www.abi.org



AMERICAN BANKRUPTCY INSTITUTE

Unemployment Rate By Quarter 2006 - 2025



Source: Bureau of Labor Statistics

Bankruptcy Filing Trends in Rhode Island: 2000-2025

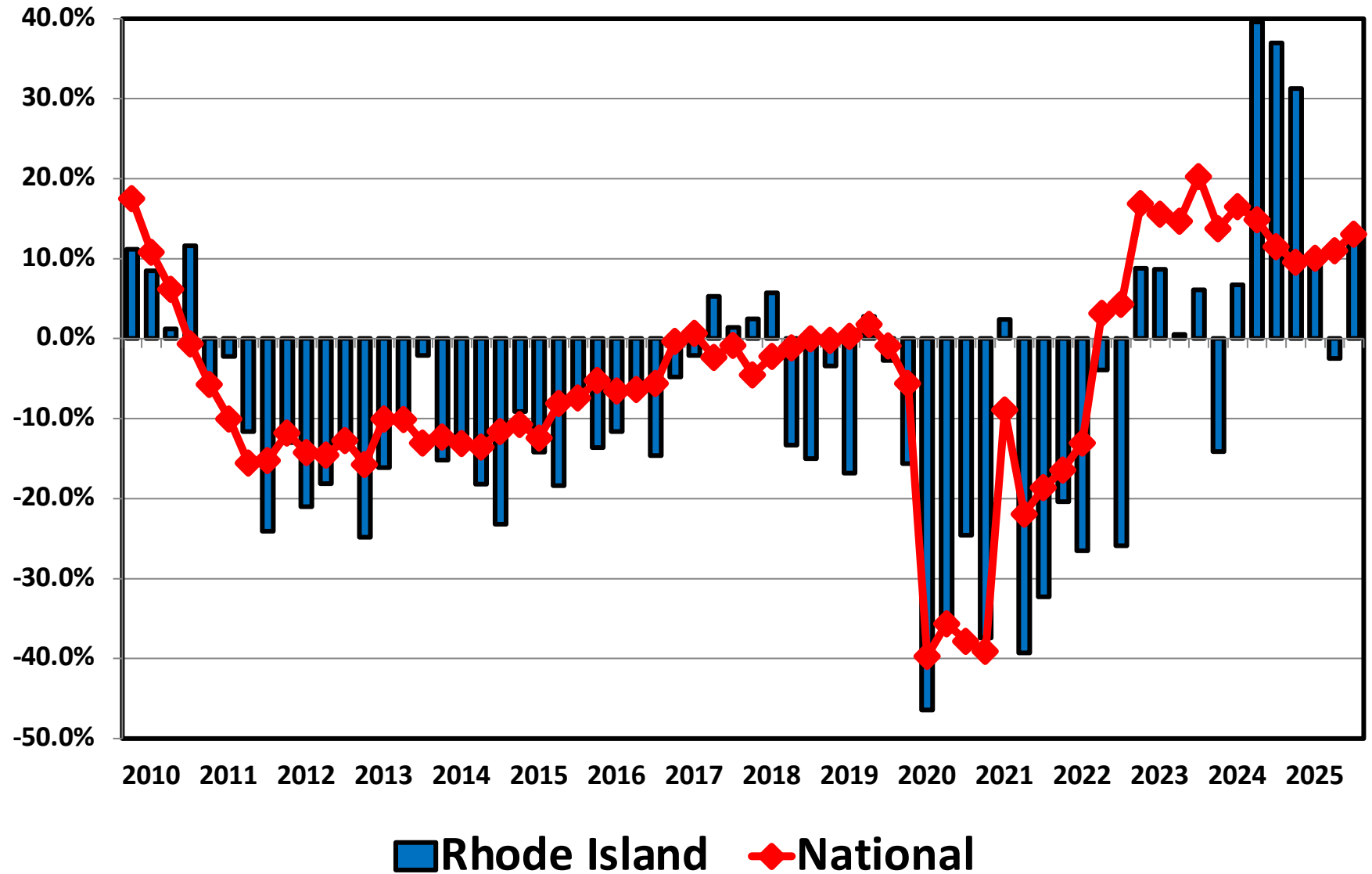


Prepared by the American Bankruptcy Institute
www.abi.org



AMERICAN BANKRUPTCY INSTITUTE

Filing Trends By Quarter Rhode Island vs. National Average (Percent Change From Same Quarter One Year Prior)



Bankruptcy Filing Trends in Rhode Island: 2000-2025



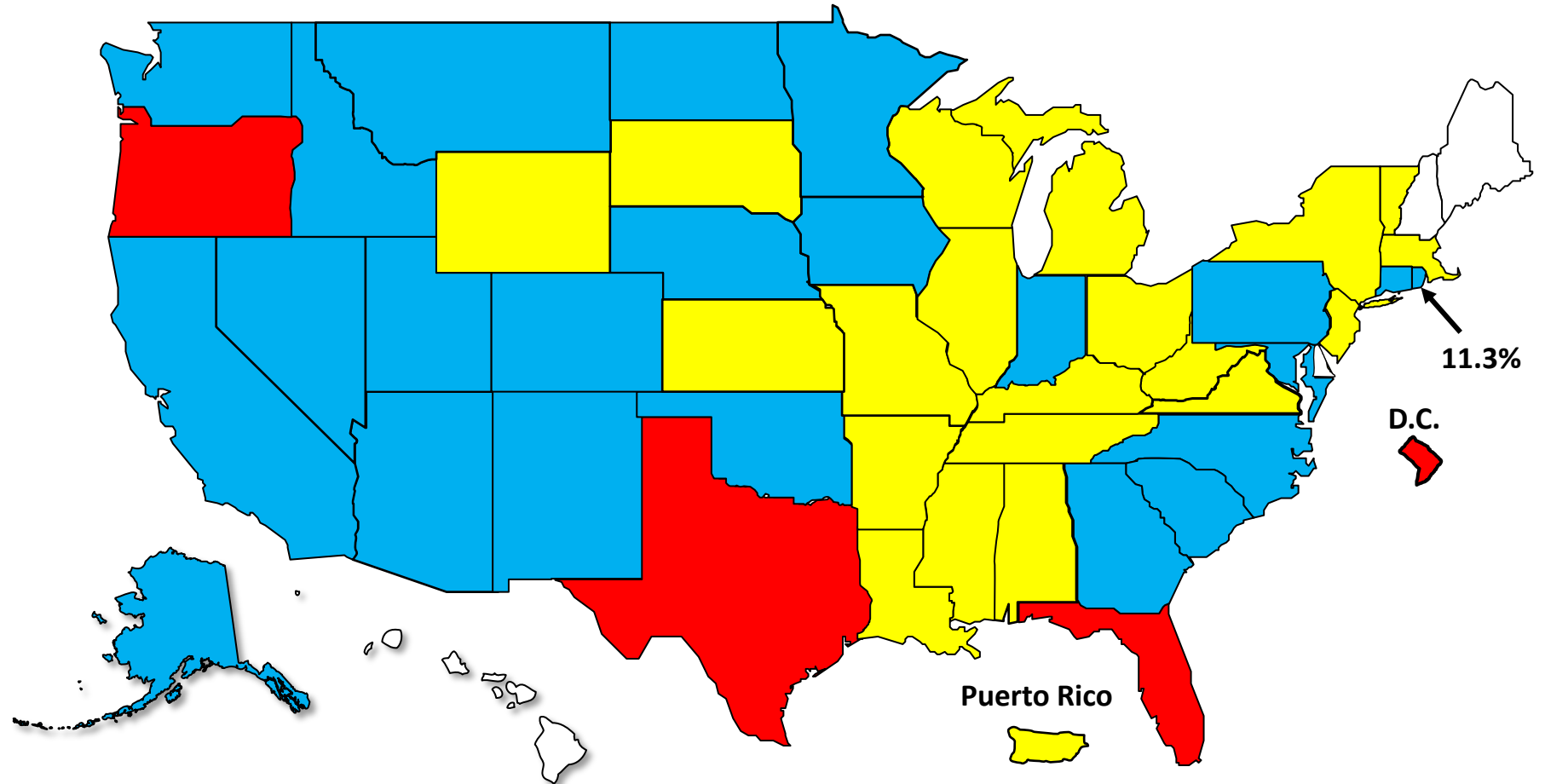
Prepared by the American Bankruptcy Institute
www.abi.org



AMERICAN BANKRUPTCY INSTITUTE

Bankruptcy Filing Trends Calendar Year 2025 vs. 2024 National Average = 11.0% Increase

Red +20% or More **Blue** +10.0% to 19.9% **Yellow** +0% to 9.9% **White** Decline



Bankruptcy Filing Trends in Rhode Island: 2000-2025



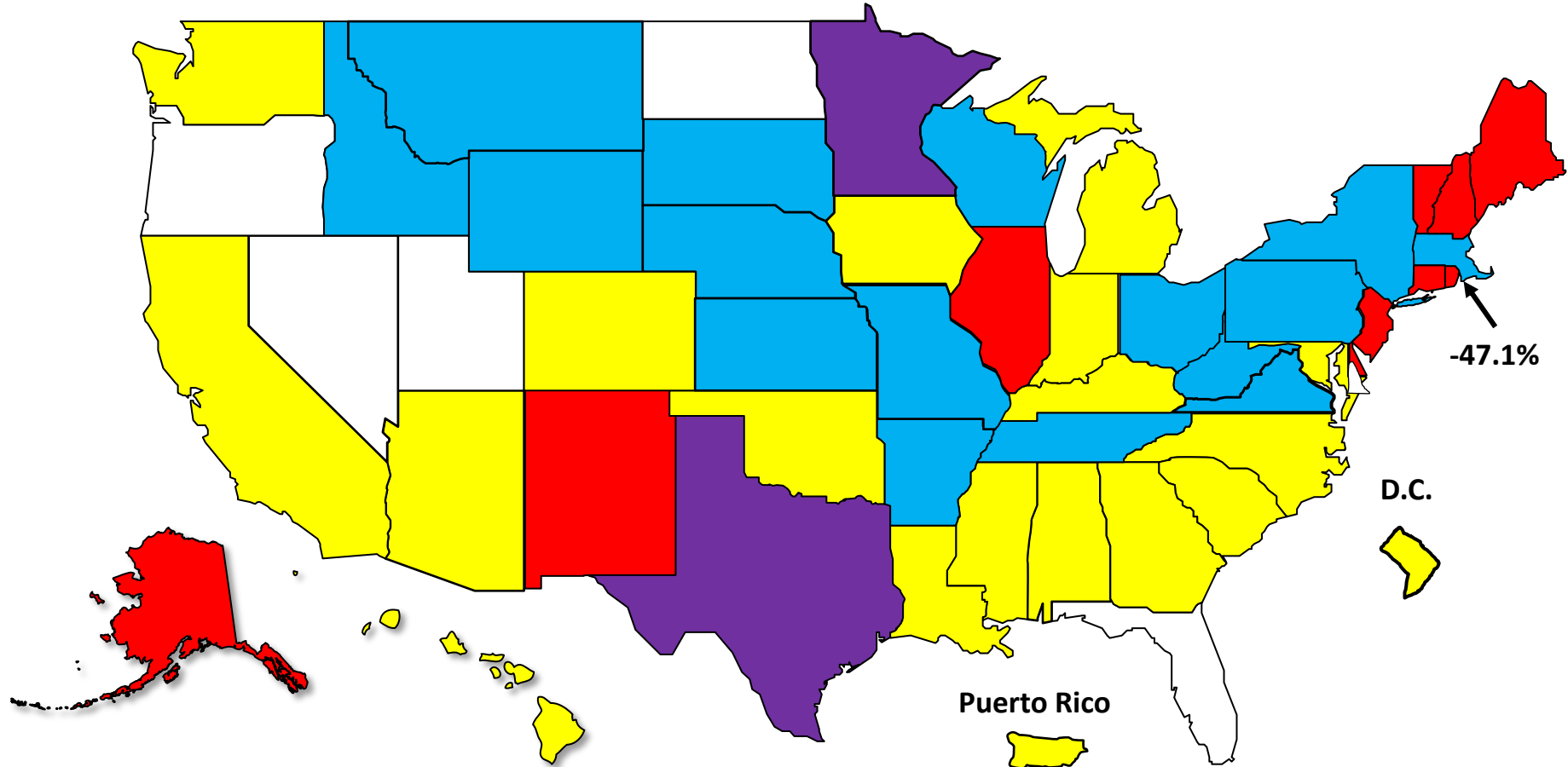
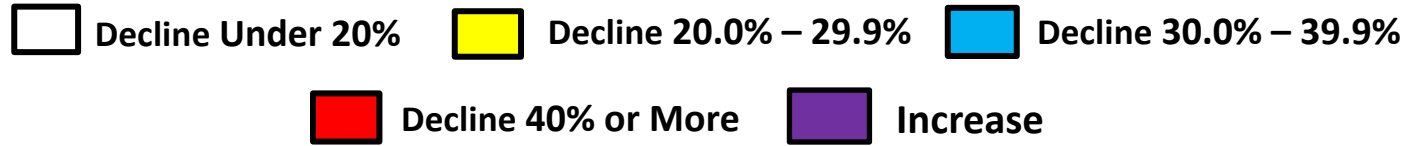
Prepared by the American Bankruptcy Institute
www.abi.org



AMERICAN BANKRUPTCY INSTITUTE

Bankruptcy Filing Trends Since the Pandemic Calendar Year 2025 vs. 2019

National Average = 25.9% Decrease



Bankruptcy Filing Trends in Rhode Island: 2000-2025

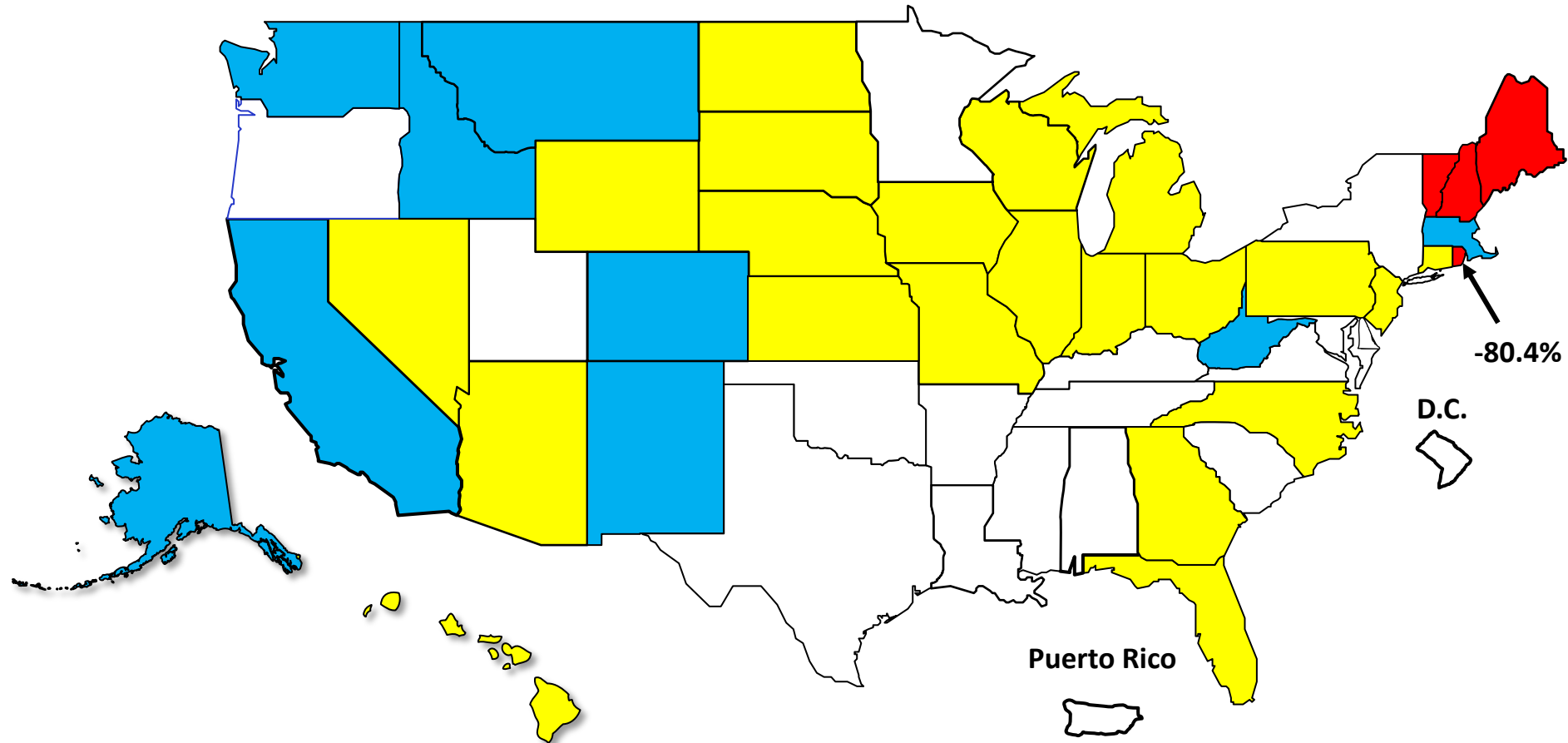


Prepared by the American
Bankruptcy Institute
www.abi.org



Percent Change in Total Filings Calendar Year 2025 Compared to 2010 (National Average = 63.9% Decrease)

Amount of Decrease





AMERICAN BANKRUPTCY INSTITUTE

Prepared by the American Bankruptcy Institute. www.abi.org