

Bankruptcy Filing Trends in Oregon: 2000-2025



Prepared by the American Bankruptcy Institute. www.abi.org



Bankruptcy Filing Trends in Oregon: 2000-2025



Prepared by the American
Bankruptcy Institute
www.abi.org



AMERICAN
BANKRUPTCY
INSTITUTE



Oregon

State at a Glance		
	Oregon	National
Population (7/1/2025)	4,273,586	341,784,857
- Change since April 2020	.9%	3.1%
- Foreign Born	9.8%	14.1%
Size (Square Miles)	95,996	3,533,038
Median Household Income	\$83,011	\$80,734
Persons per Household	2.42	2.53
Per Capita Income	\$45,612	\$44,673
Median Home Value	\$477,600	\$332,700
Homeownership Rate	63.3%	65.2%
High School Graduate (or Higher)	91.8%	89.6%
College Graduate (or Higher)	36.8%	35.7%
Disabled	11.1%	9.3%
No Health Insurance	6.4%	9.6%
In Poverty	11.8%	10.6%
Source: U.S. Census Bureau January 2026		

Bankruptcy Filing Trends in Oregon: 2000-2025

STATE OF OREGON



1859

Prepared by the American
Bankruptcy Institute
www.abi.org



AMERICAN
BANKRUPTCY
INSTITUTE

**Bankruptcy Filings in Oregon
Calendar Years 2000 - 2025**

Year	Total	Chapter 7	Chapter 11	Chapter 13	Other Cases*
2025	8,202	6,373	38	1,790	1
2024	6,594	4,983	28	1,578	5
2023	5,687	4,007	40	1,638	2
2022	4,202	3,102	19	1,076	5
2021	4,771	3,827	25	915	4
2020	6,636	5,301	23	1,291	21
2019	8,996	6,724	29	2,237	6
2018	8,815	6,642	27	2,144	2
2017	9,191	7,068	24	2,092	7
2016	9,131	7,116	28	1,980	7
2015	10,809	8,698	23	2,086	2
2014	12,305	10,031	31	2,241	2
2013	13,610	11,045	43	2,514	8
2012	15,281	11,937	56	3,277	11
2011	17,681	13,886	58	3,724	13
2010	20,243	15,798	65	4,363	17
2009	18,380	14,331	59	3,981	9
2008	12,802	9,551	64	3,184	3
2007	9,386	6,838	24	2,522	2
2006	7,585	5,699	19	1,860	7
2005	32,687	28,472	17	4,188	10
2004	24,455	20,449	51	3,952	3
2003	25,370	21,541	41	3,774	14
2002	24,649	21,088	59	3,489	13
2001	23,038	19,769	48	3,209	12
2000	18,227	15,138	35	3,048	6
*Chapters 9, 12 and 15					

Bankruptcy Filing Trends in Oregon: 2000-2025

STATE OF OREGON



1859

Prepared by the American
Bankruptcy Institute
www.abi.org



AMERICAN
BANKRUPTCY
INSTITUTE

Business Bankruptcy Cases Filed - Oregon Years Ended December 31, 2000 - 2025					
CALENDAR YEAR	TOTAL FILINGS	CHAPTER 7	CHAPTER 11	CHAPTER 13	OTHER CASES*
2025	253	198	34	20	1
2024	203	138	26	34	5
2023	168	100	38	28	2
2022	114	68	19	22	5
2021	129	90	22	13	4
2020	167	105	22	19	21
2019	220	158	26	30	6
2018	203	146	24	31	2
2017	200	138	22	33	7
2016	225	156	26	36	7
2015	209	150	21	36	2
2014	246	188	25	31	2
2013	364	262	39	55	8
2012	424	288	54	71	11
2011	549	419	56	61	13
2010	575	413	64	81	17
2009	593	448	49	87	9
2008	429	296	59	71	3
2007	265	172	20	71	2
2006	301	193	18	83	7
2005	1,160	849	16	285	10
2004	852	590	50	209	3
2003	1,591	701	38	838	14
2002	1,606	725	59	809	13
2001	1,389	633	48	696	12
2000	1,453	742	35	670	6
* Chapters 9, 12 and 15					

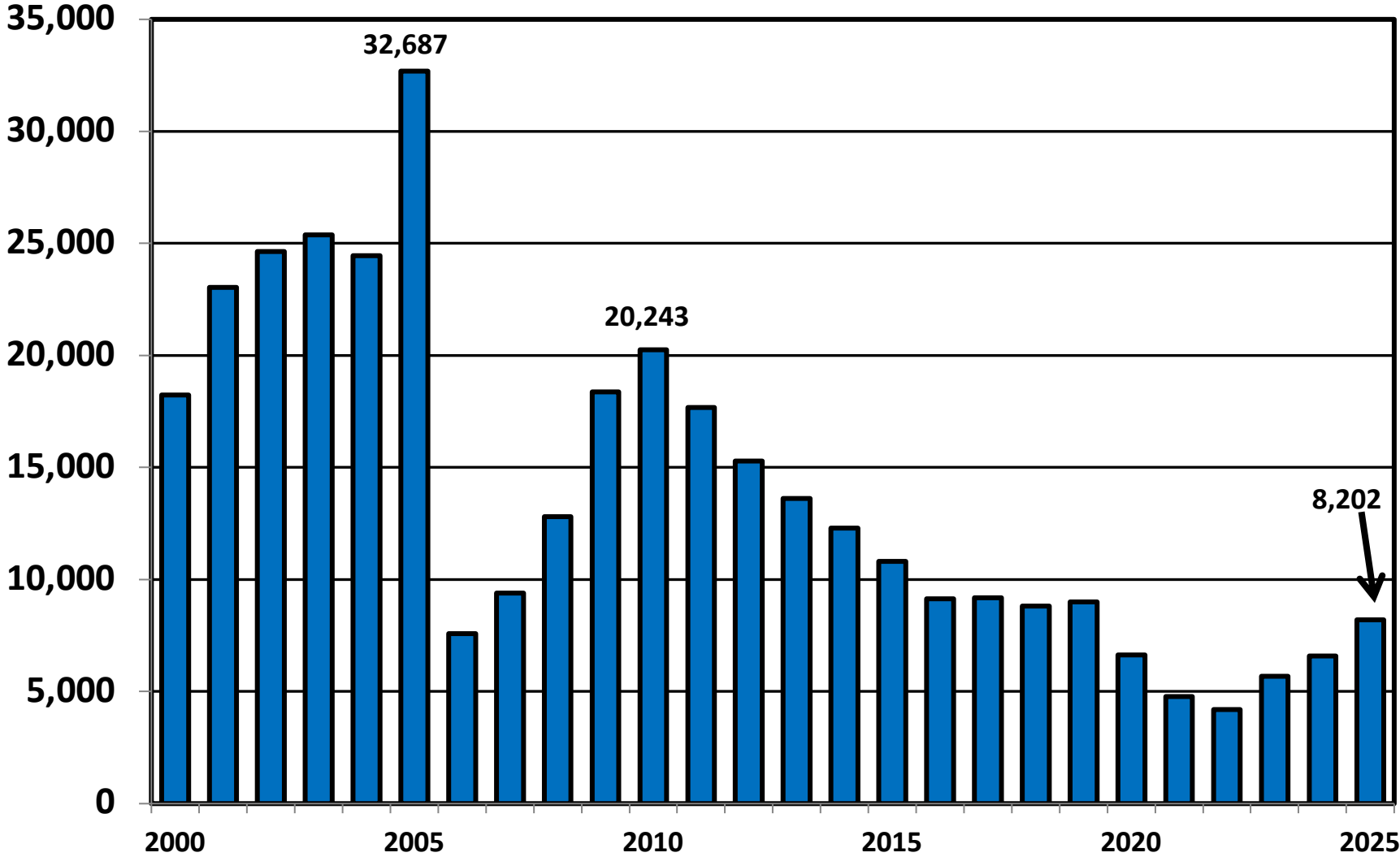
Bankruptcy Filing Trends in Oregon: 2000-2025



Prepared by the American Bankruptcy Institute
www.abi.org



District of Oregon Total Bankruptcy Cases Filed 2000 - 2025



Bankruptcy Filing Trends in Oregon: 2000-2025



Prepared by the American Bankruptcy Institute
www.abi.org



AMERICAN BANKRUPTCY INSTITUTE

Total Filings Relative to Population 2000 - 2025



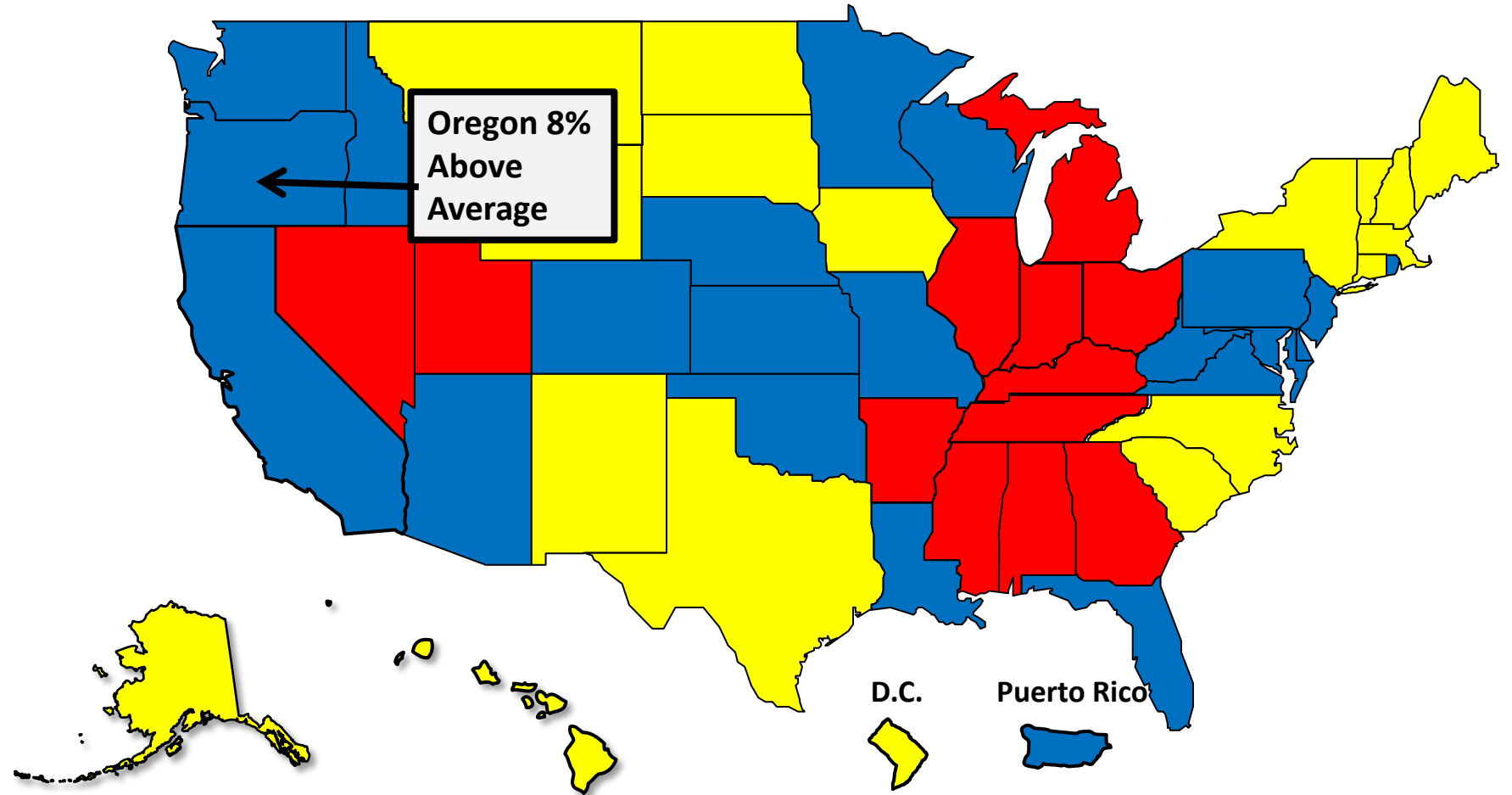
More than 25% Above Average



Within 25% of Average



More than 25% Below Average



Bankruptcy Filing Trends in Oregon: 2000-2025

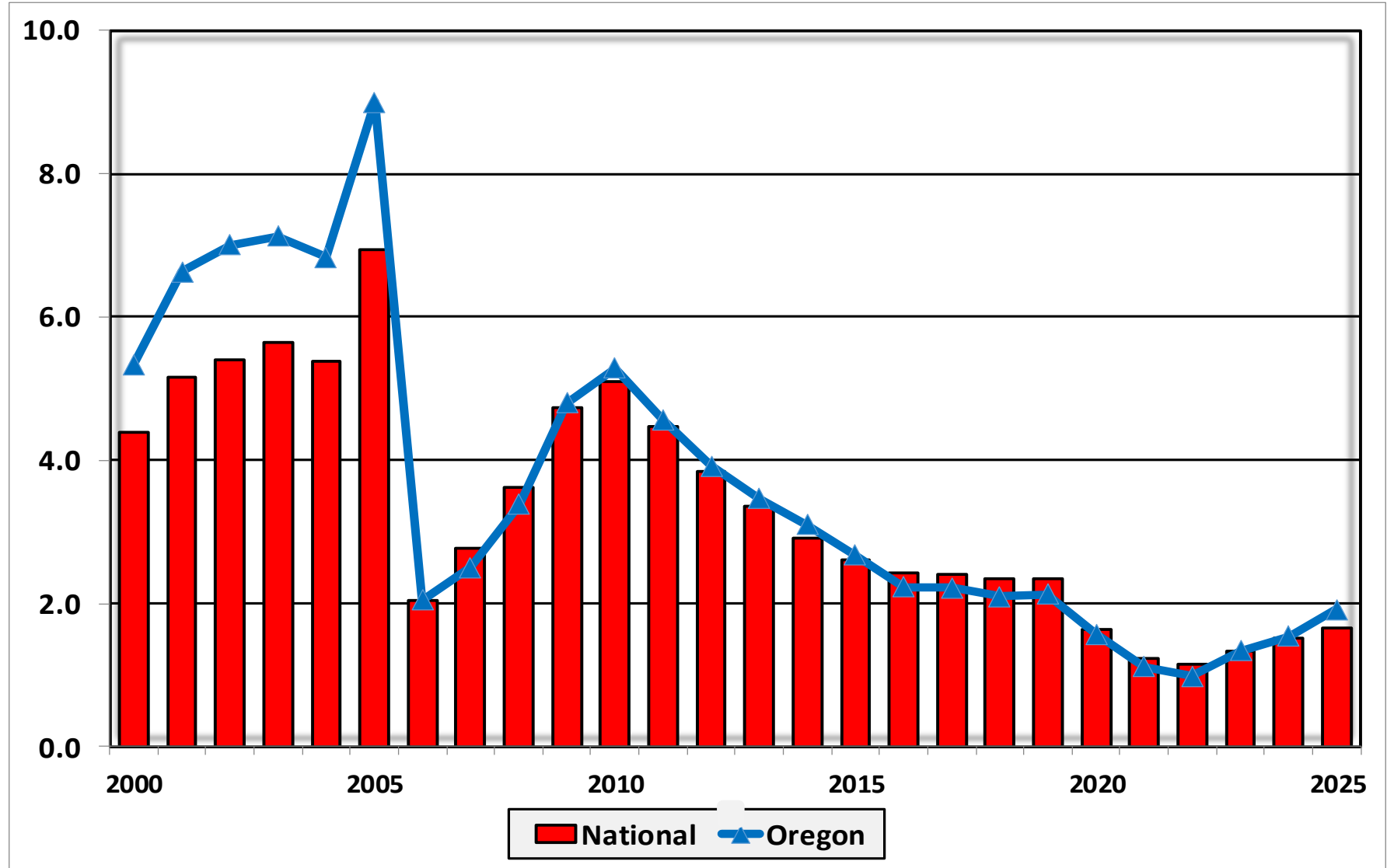


Prepared by the American
Bankruptcy Institute
www.abi.org



AMERICAN
BANKRUPTCY
INSTITUTE

Bankruptcy Filings per 1,000 Population Oregon vs. National Average 2000 - 2025



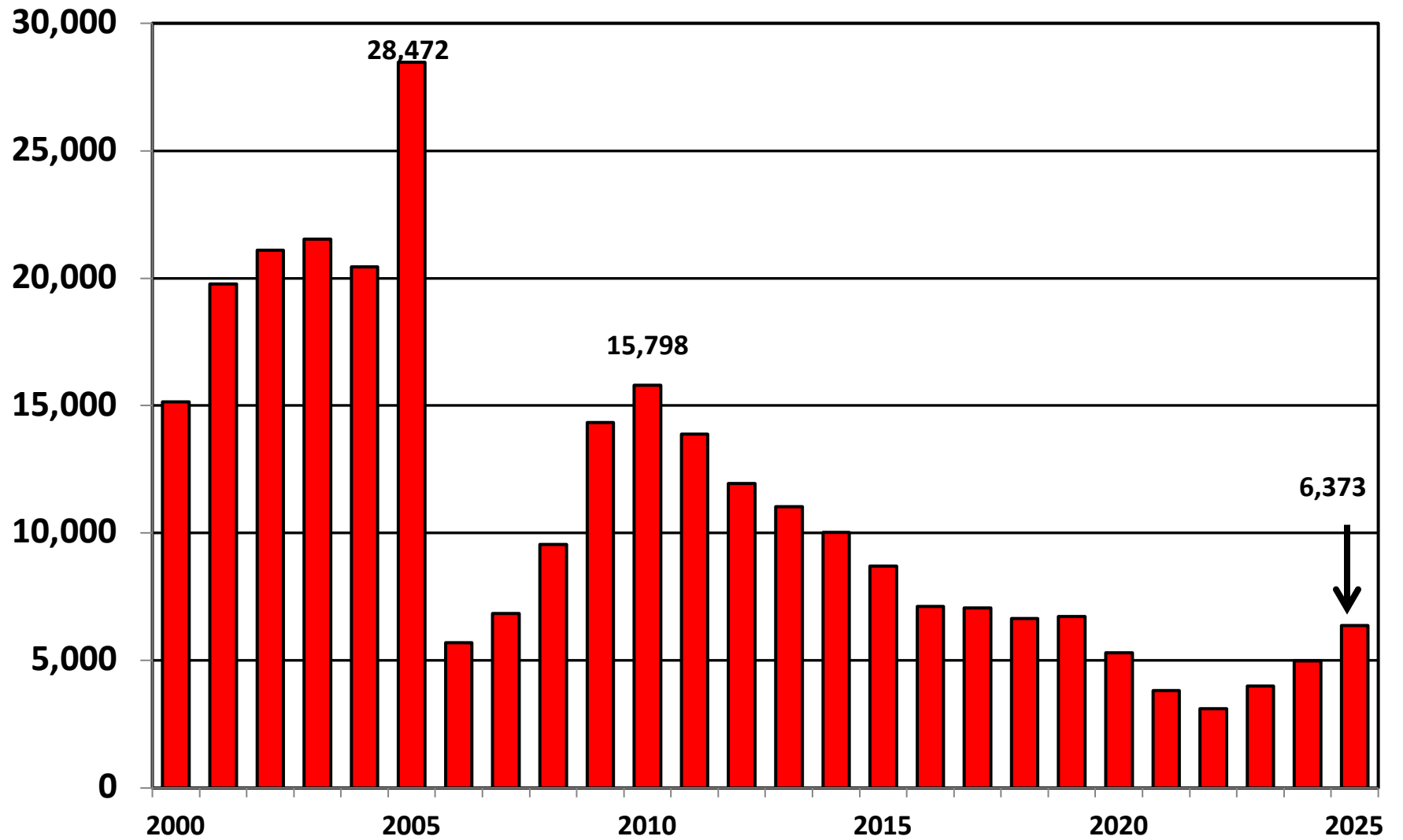
Bankruptcy Filing Trends in Oregon: 2000-2025



Prepared by the American Bankruptcy Institute
www.abi.org



District of Oregon Chapter 7 Cases Filed 2000 - 2025



Bankruptcy Filing Trends in Oregon: 2000-2025

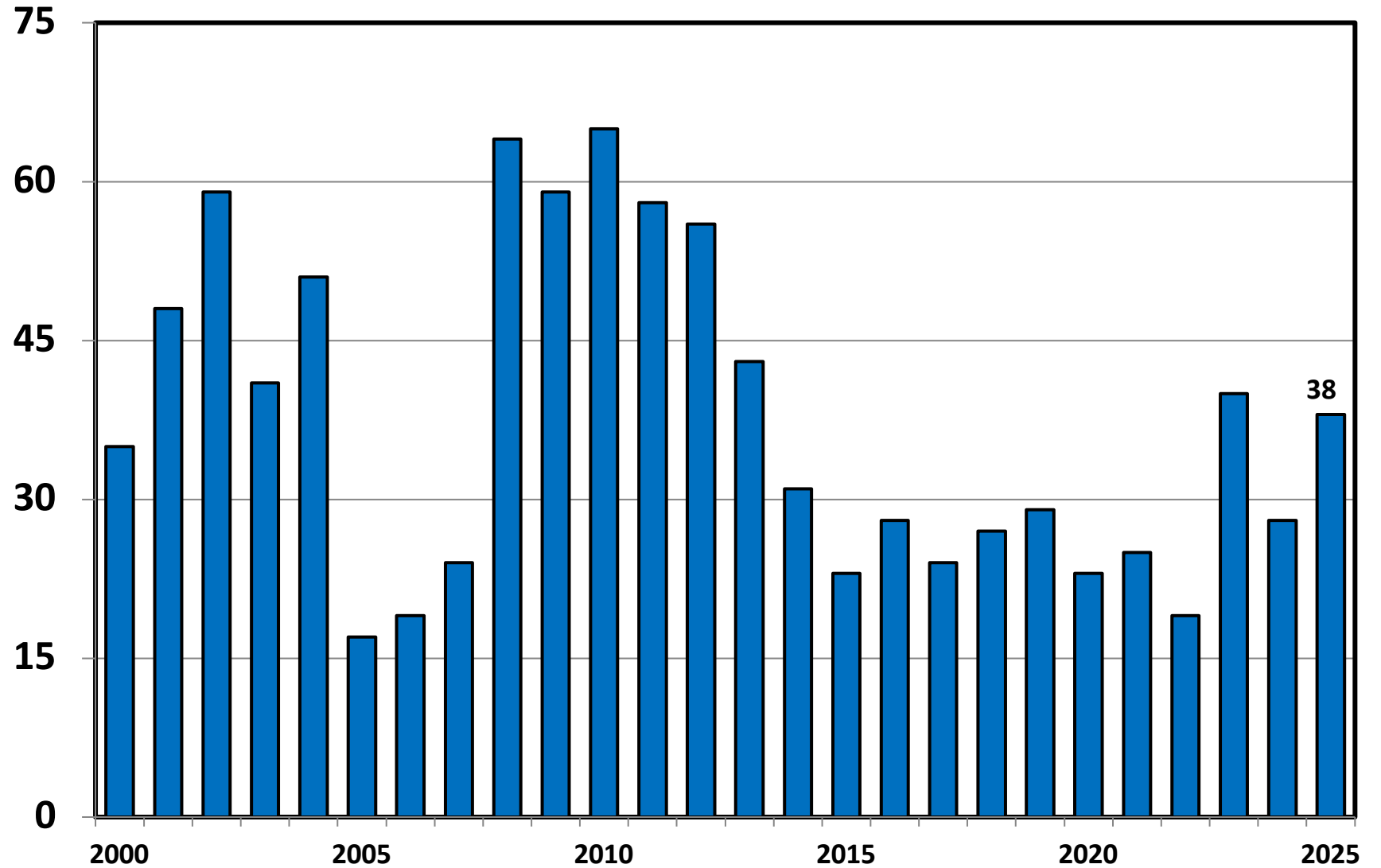


Prepared by the American
Bankruptcy Institute
www.abi.org



AMERICAN
BANKRUPTCY
INSTITUTE

Chapter 11 Cases Filed in Oregon 2000 - 2025



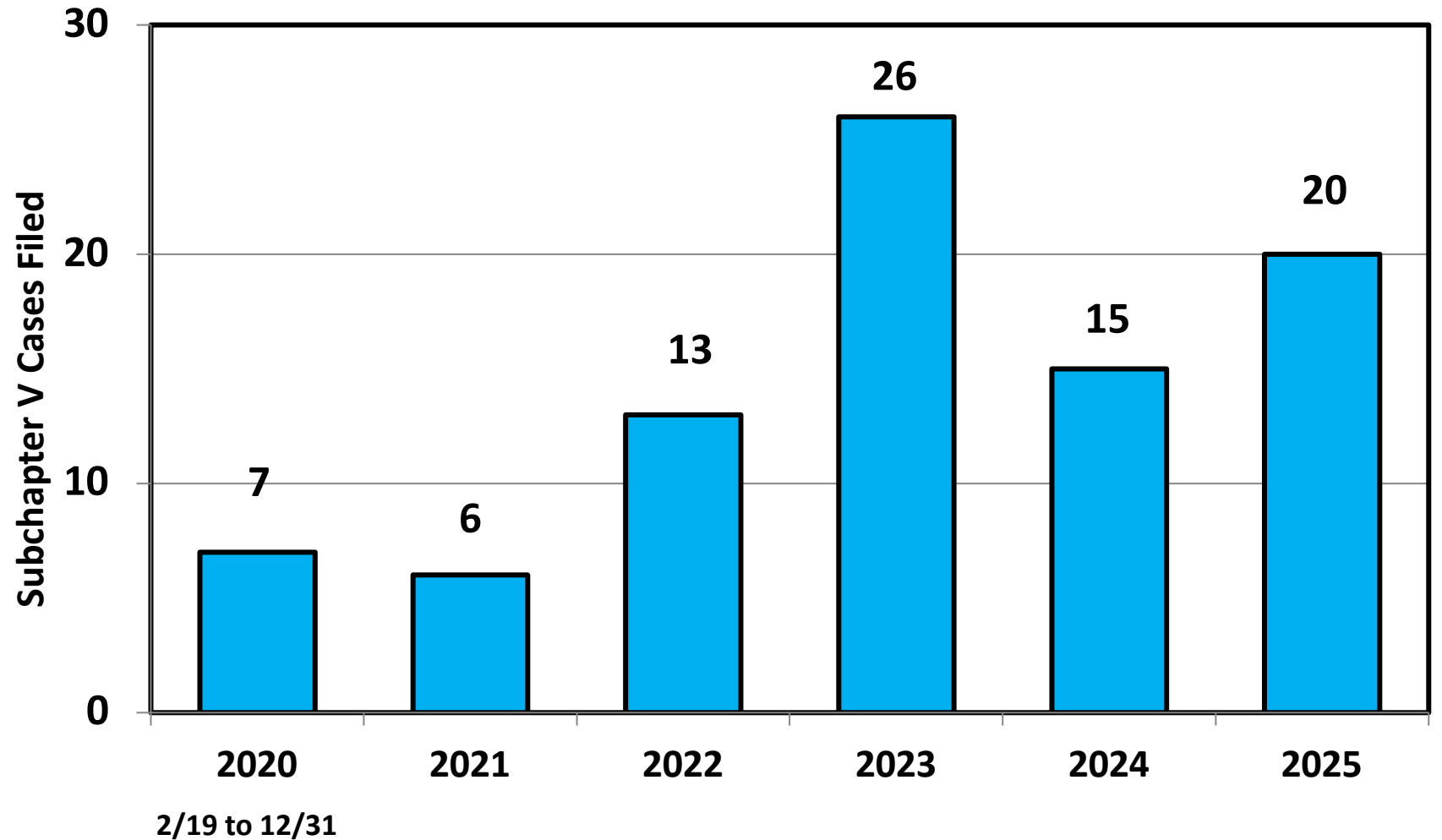
Bankruptcy Filing Trends in Oregon: 2000-2025



Prepared by the American
Bankruptcy Institute
www.abi.org



Subchapter V Cases Filed in Oregon Calendar Years 2020 - 2025



Source: ABI review of PACER records

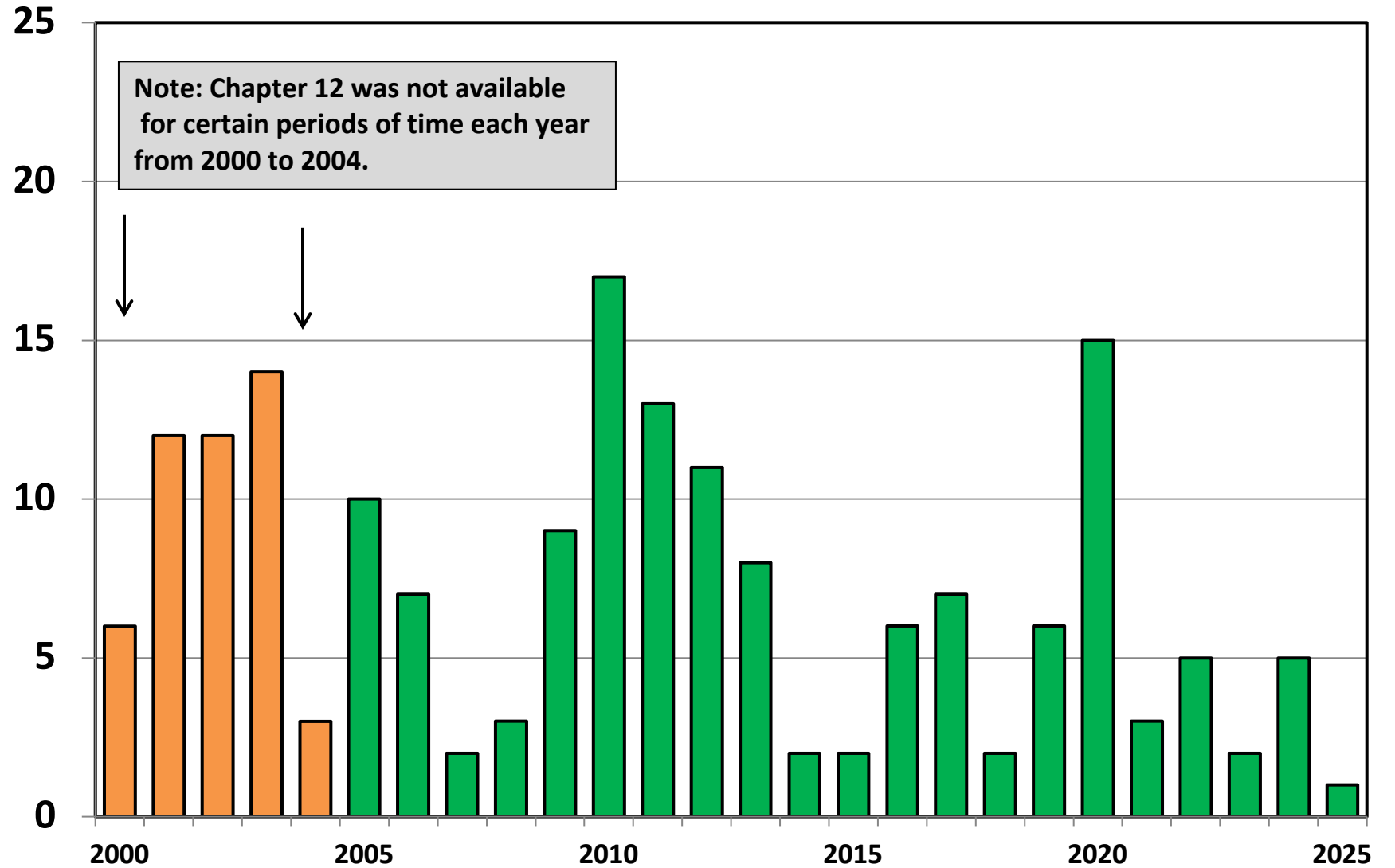
Bankruptcy Filing Trends in Oregon: 2000-2025



Prepared by the American
Bankruptcy Institute
www.abi.org



Chapter 12 Cases Filed in Oregon 2000 - 2025



Bankruptcy Filing Trends in Oregon: 2000-2025

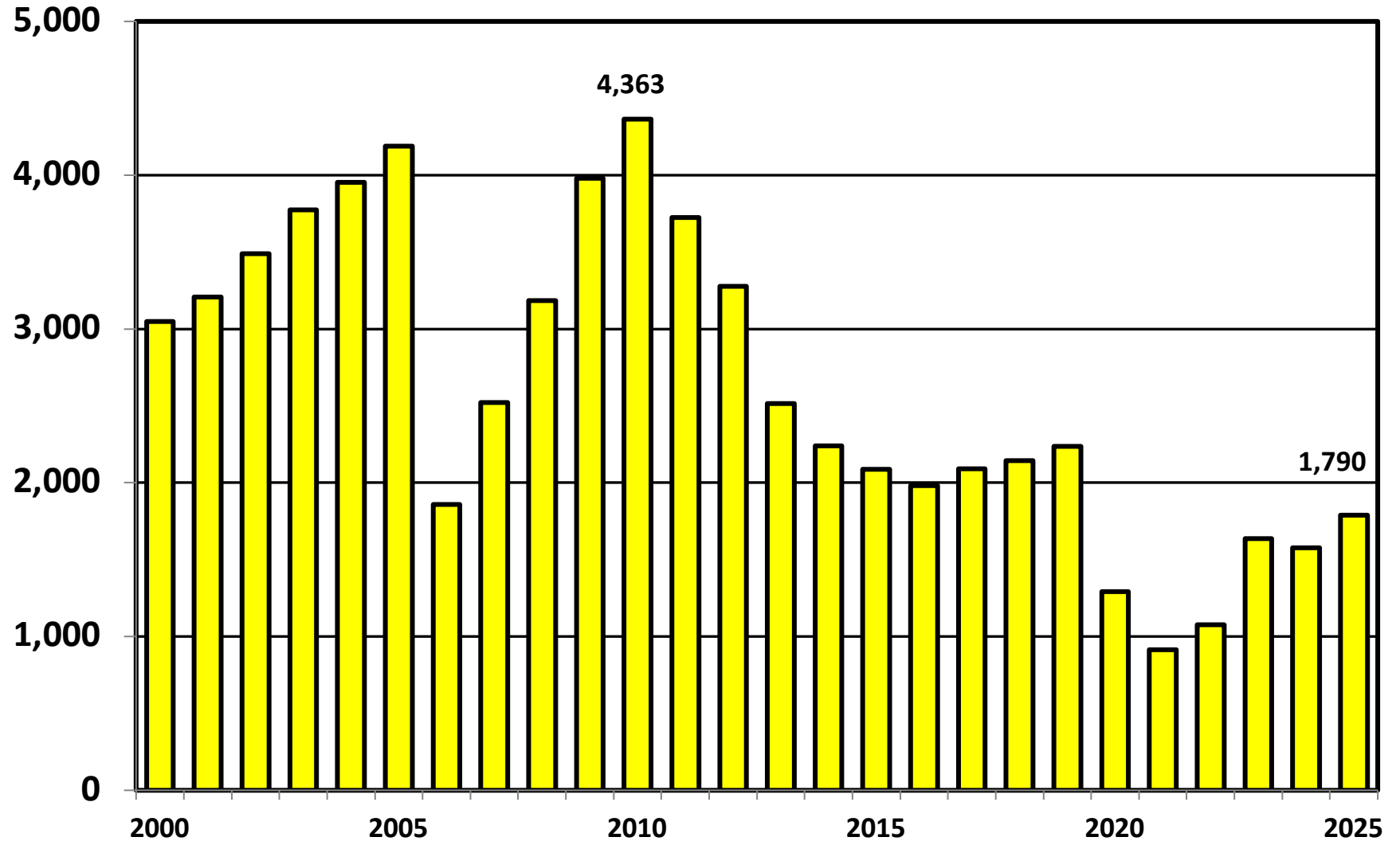


Prepared by the American
Bankruptcy Institute
www.abi.org



AMERICAN
BANKRUPTCY
INSTITUTE

District of Oregon Chapter 13 Cases Filed 2000 - 2025



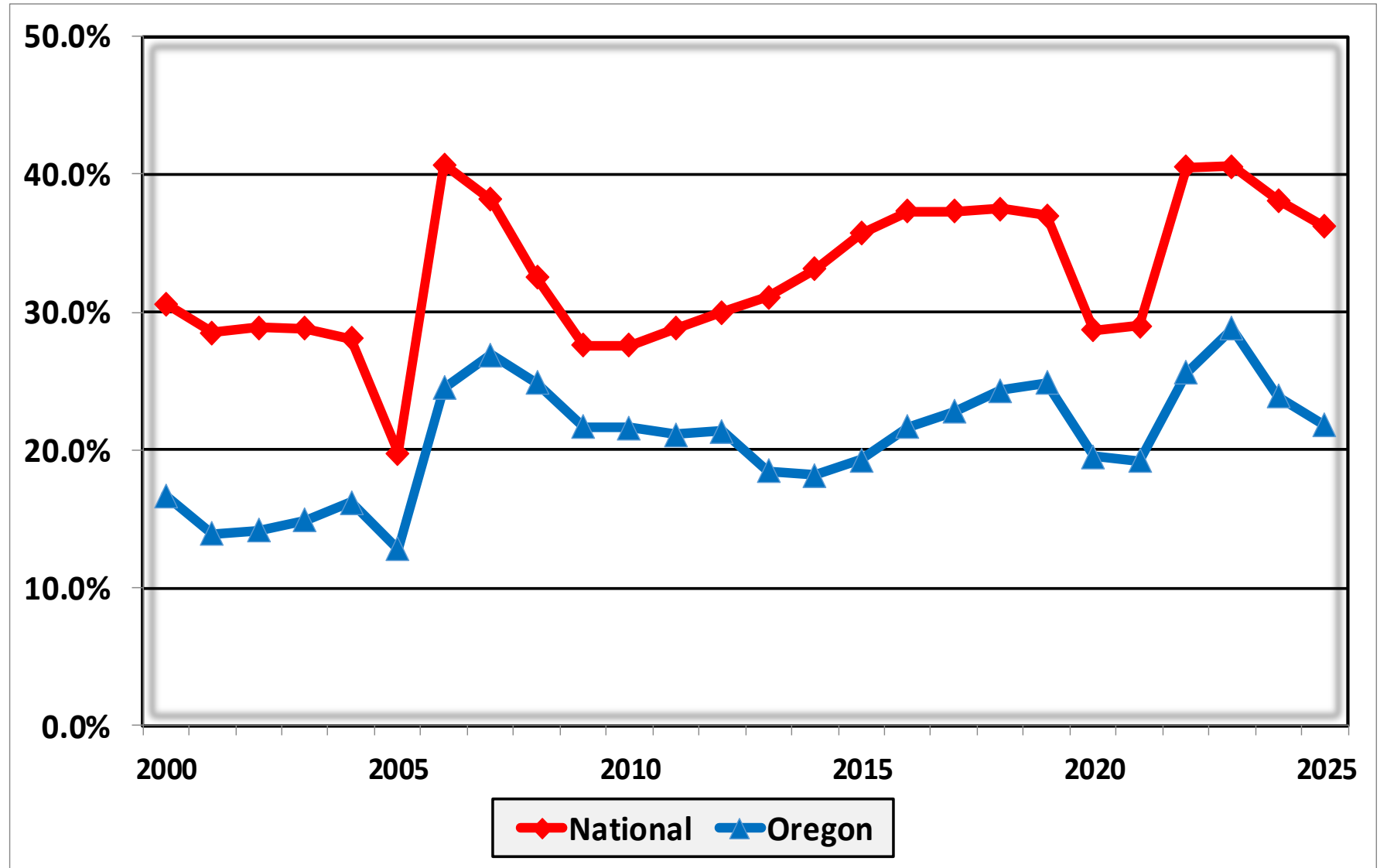
Bankruptcy Filing Trends in Oregon: 2000-2025



Prepared by the American
Bankruptcy Institute
www.abi.org



Percent of Cases Filed as Chapter 13 Calendar Years 2000 - 2025



Bankruptcy Filing Trends in Oregon: 2000-2025



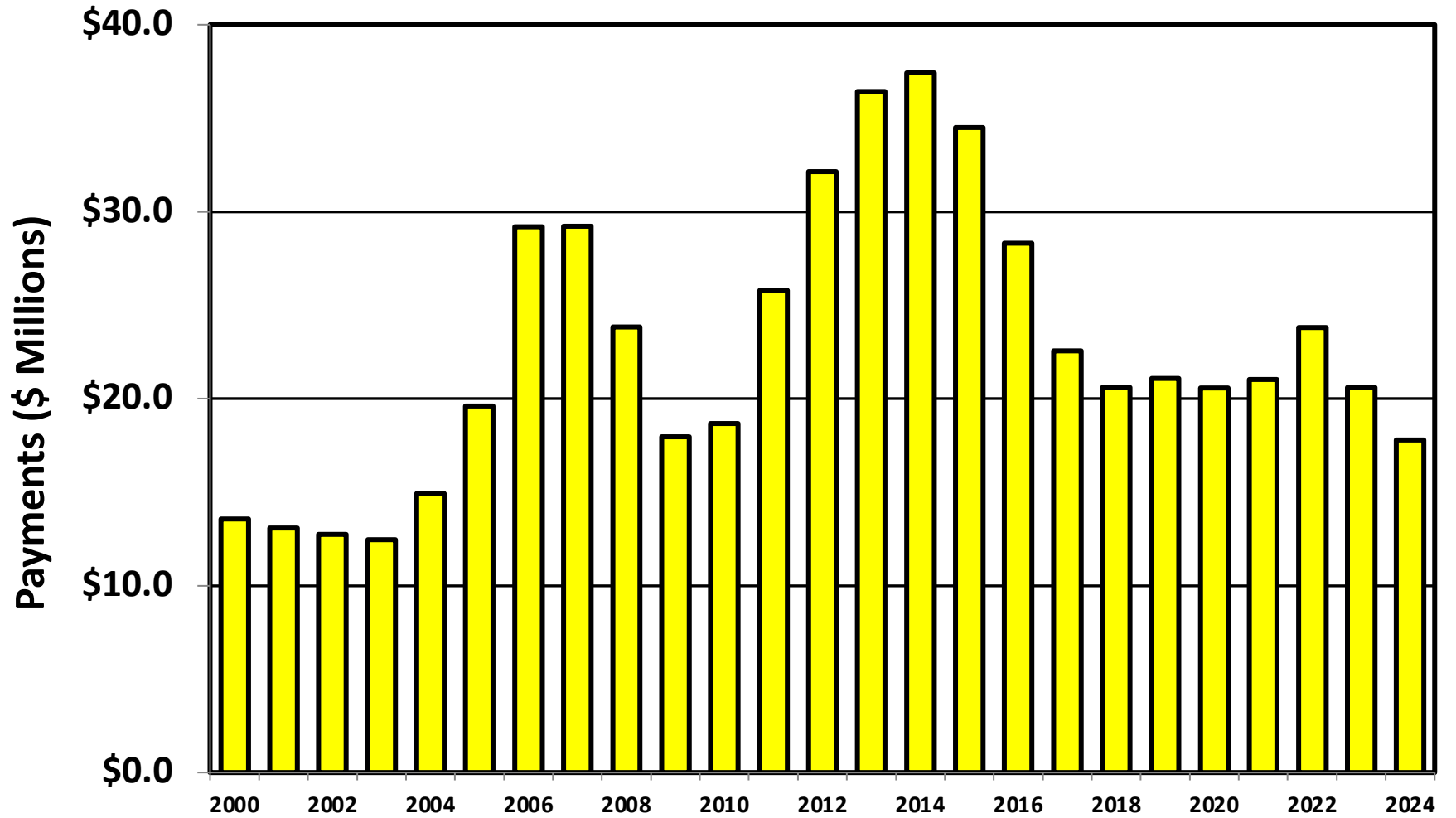
Prepared by the American
Bankruptcy Institute
www.abi.org



AMERICAN
BANKRUPTCY
INSTITUTE

Chapter 13 Cases in Oregon

Amount (in Millions) Paid to Unsecured Creditors
Fiscal Years 2000 - 2024



Source: Executive Office for United States Trustees

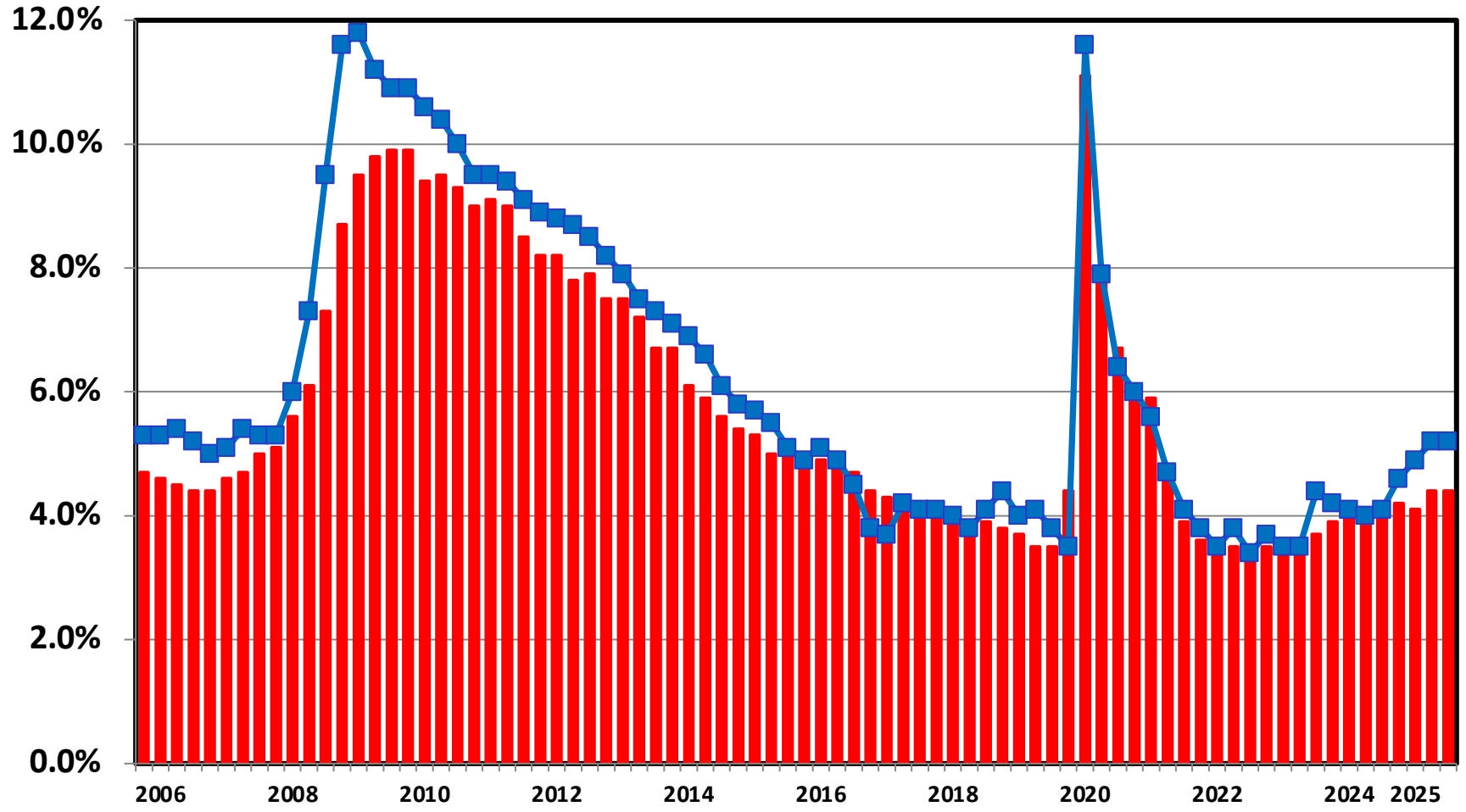
Bankruptcy Filing Trends in Oregon: 2000-2025



Prepared by the American Bankruptcy Institute
www.abi.org



Unemployment Rate By Quarter 2006 - 2025



■ National ■ Oregon

Source: Bureau of Labor Statistics

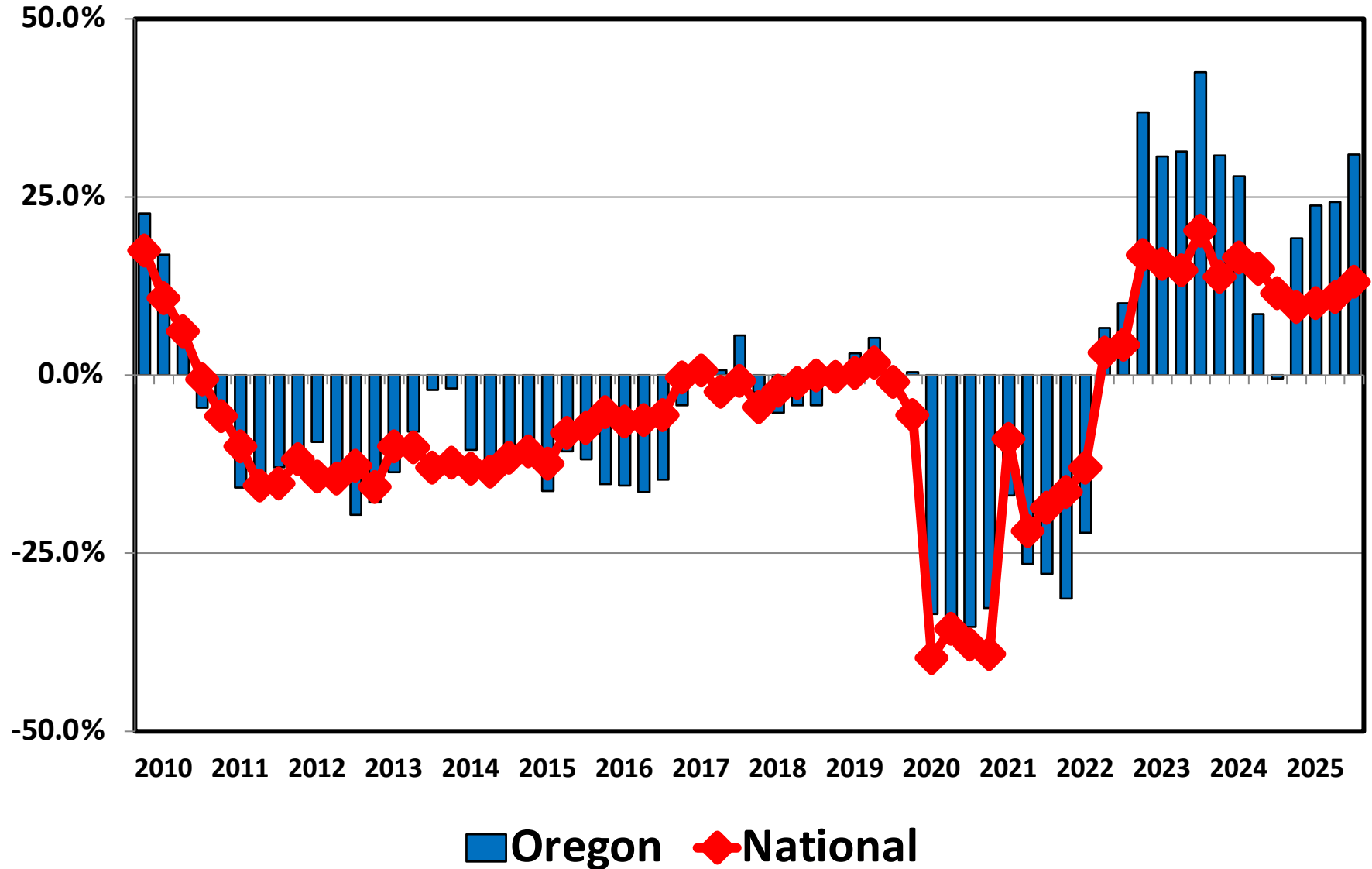
Bankruptcy Filing Trends in Oregon: 2000-2025



Prepared by the American Bankruptcy Institute
www.abi.org



Filing Trends By Quarter Oregon vs. National Average (Percent Change From Same Quarter One Year Prior)



Bankruptcy Filing Trends in Oregon: 2000-2025



Prepared by the American Bankruptcy Institute
www.abi.org



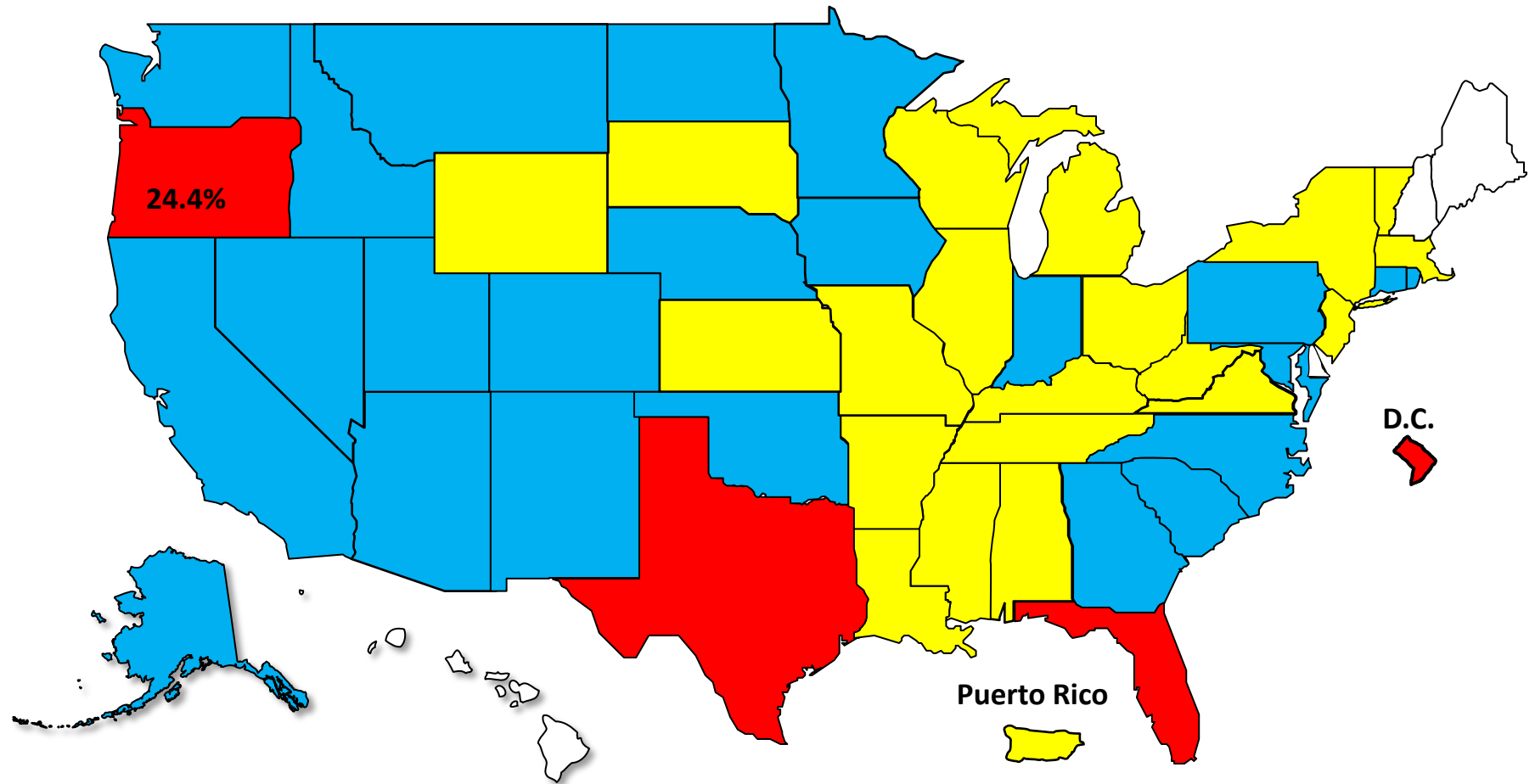
AMERICAN BANKRUPTCY INSTITUTE

Bankruptcy Filing Trends

Calendar Year 2025 vs. 2024

National Average = 11.0% Increase

+20% or More +10.0% to 19.9% +0% to 9.9% Decline



Bankruptcy Filing Trends in Oregon: 2000-2025



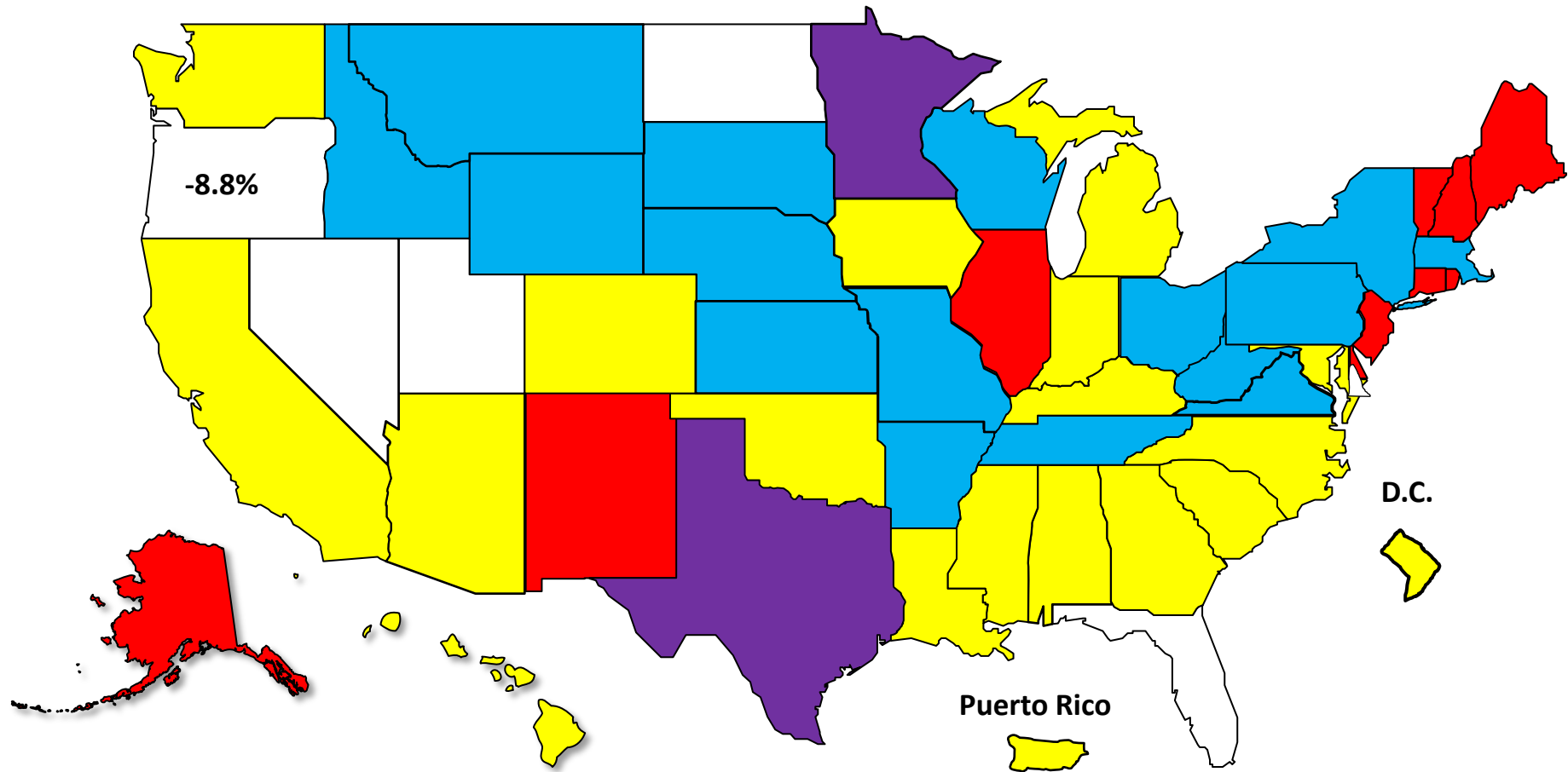
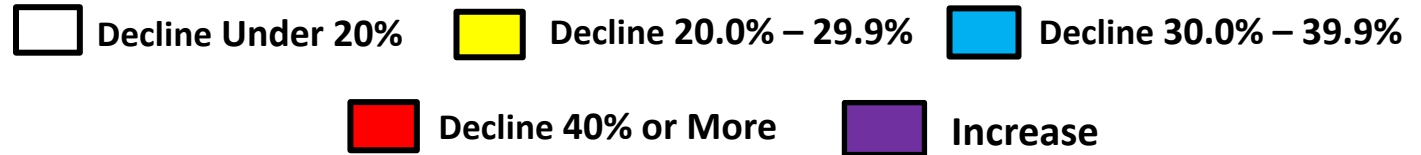
Prepared by the American Bankruptcy Institute
www.abi.org



AMERICAN BANKRUPTCY INSTITUTE

Bankruptcy Filing Trends Since the Pandemic Calendar Year 2025 vs. 2019

National Average = 25.9% Decrease



Bankruptcy Filing Trends in Oregon: 2000-2025

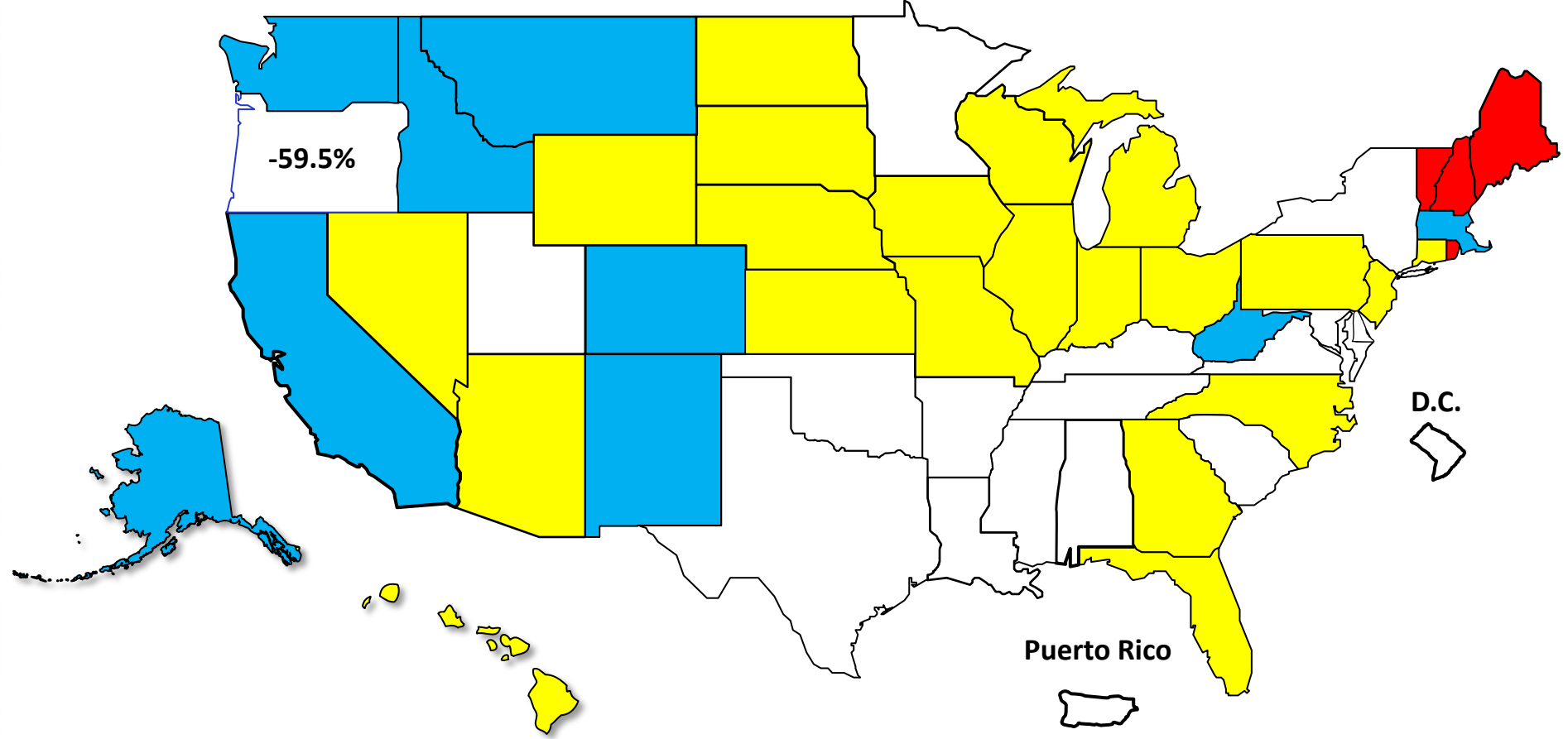


Prepared by the American Bankruptcy Institute
www.abi.org



Percent Change in Total Filings Calendar Year 2025 Compared to 2010 (National Average = 63.9% Decrease)

Amount of Decrease





AMERICAN BANKRUPTCY INSTITUTE

Prepared by the American Bankruptcy Institute. www.abi.org