

# Bankruptcy Filing Trends in New Mexico: 2000-2025



Prepared by the American Bankruptcy Institute. [www.abi.org](http://www.abi.org)



# Bankruptcy Filing Trends in New Mexico: 2000-2025



Prepared by the American Bankruptcy Institute  
[www.abi.org](http://www.abi.org)



AMERICAN  
 BANKRUPTCY  
 INSTITUTE



# New Mexico

State at a Glance		
	New Mexico	National
Population (7/1/2025)	2,125,498	341,784,857
- Change since April 2020	.4%	3.1%
- Foreign Born	9.4%	14.1%
Size (Square Miles)	121,313	3,533,038
Median Household Income	\$64,059	\$80,734
Persons per Household	2.48	2.53
Per Capita Income	\$36,218	\$44,673
Median Home Value	\$248,100	\$332,700
Homeownership Rate	70.0%	65.2%
High School Graduate (or Higher)	88.0%	89.6%
College Graduate (or Higher)	31.0%	35.7%
Disabled	12.0%	9.3%
No Health Insurance	12.4%	9.6%
In Poverty	16.4%	10.6%
Source: U.S. Census Bureau January 2026		

# Bankruptcy Filing Trends in New Mexico: 2000-2025



Prepared by the American  
Bankruptcy Institute  
[www.abi.org](http://www.abi.org)



AMERICAN  
BANKRUPTCY  
INSTITUTE

Bankruptcy Filings in New Mexico					
Calendar Years 2000 - 2025					
Year	Total	Chapter 7	Chapter 11	Chapter 13	Other Cases*
2025	1,660	1,433	12	214	1
2024	1,420	1,213	7	199	1
2023	1,193	993	8	192	0
2022	1,075	909	8	157	1
2021	1,510	1,353	10	146	1
2020	2,423	2,154	19	248	2
2019	3,046	2,602	27	417	0
2018	3,274	2,891	22	361	0
2017	3,345	2,989	37	317	2
2016	3,306	2,971	35	299	1
2015	3,458	3,132	34	288	4
2014	3,830	3,511	35	284	0
2013	4,330	3,913	34	383	0
2012	4,810	4,355	48	405	2
2011	5,674	5,149	51	473	1
2010	6,571	5,989	48	531	3
2009	6,124	5,610	49	460	5
2008	4,567	4,107	34	424	2
2007	3,403	2,991	29	380	3
2006	2,521	2,199	18	302	2
2005	12,420	11,693	49	674	4
2004	9,520	8,643	43	833	1
2003	9,777	8,853	35	885	4
2002	9,274	8,383	52	835	4
2001	8,660	7,541	62	1,054	3
2000	7,032	5,961	33	1,034	4
*Chapters 9, 12 and 15					

# Bankruptcy Filing Trends in New Mexico: 2000-2025



Prepared by the American  
Bankruptcy Institute  
[www.abi.org](http://www.abi.org)



AMERICAN  
BANKRUPTCY  
INSTITUTE

Business Bankruptcy Cases Filed - New Mexico Years Ended December 31, 2000 - 2025					
CALENDAR YEAR	TOTAL FILINGS	CHAPTER 7	CHAPTER 11	CHAPTER 13	OTHER CASES*
2025	73	60	9	3	1
2024	62	52	6	3	1
2023	59	48	8	3	0
2022	39	30	6	2	1
2021	50	36	9	4	1
2020	85	58	19	6	2
2019	83	57	21	5	0
2018	83	58	21	4	0
2017	113	74	31	6	2
2016	135	97	30	7	1
2015	142	99	32	7	4
2014	130	95	30	5	0
2013	148	113	29	6	0
2012	182	134	43	3	2
2011	203	149	42	11	1
2010	279	220	40	16	3
2009	302	244	41	12	5
2008	202	153	28	19	2
2007	142	102	26	11	3
2006	95	67	17	9	2
2005	828	723	43	58	4
2004	727	616	36	74	1
2003	774	634	32	104	4
2002	693	571	50	68	4
2001	620	478	59	80	3
2000	513	404	31	74	4
* Chapters 9, 12 and 15					

# Bankruptcy Filing Trends in New Mexico: 2000-2025

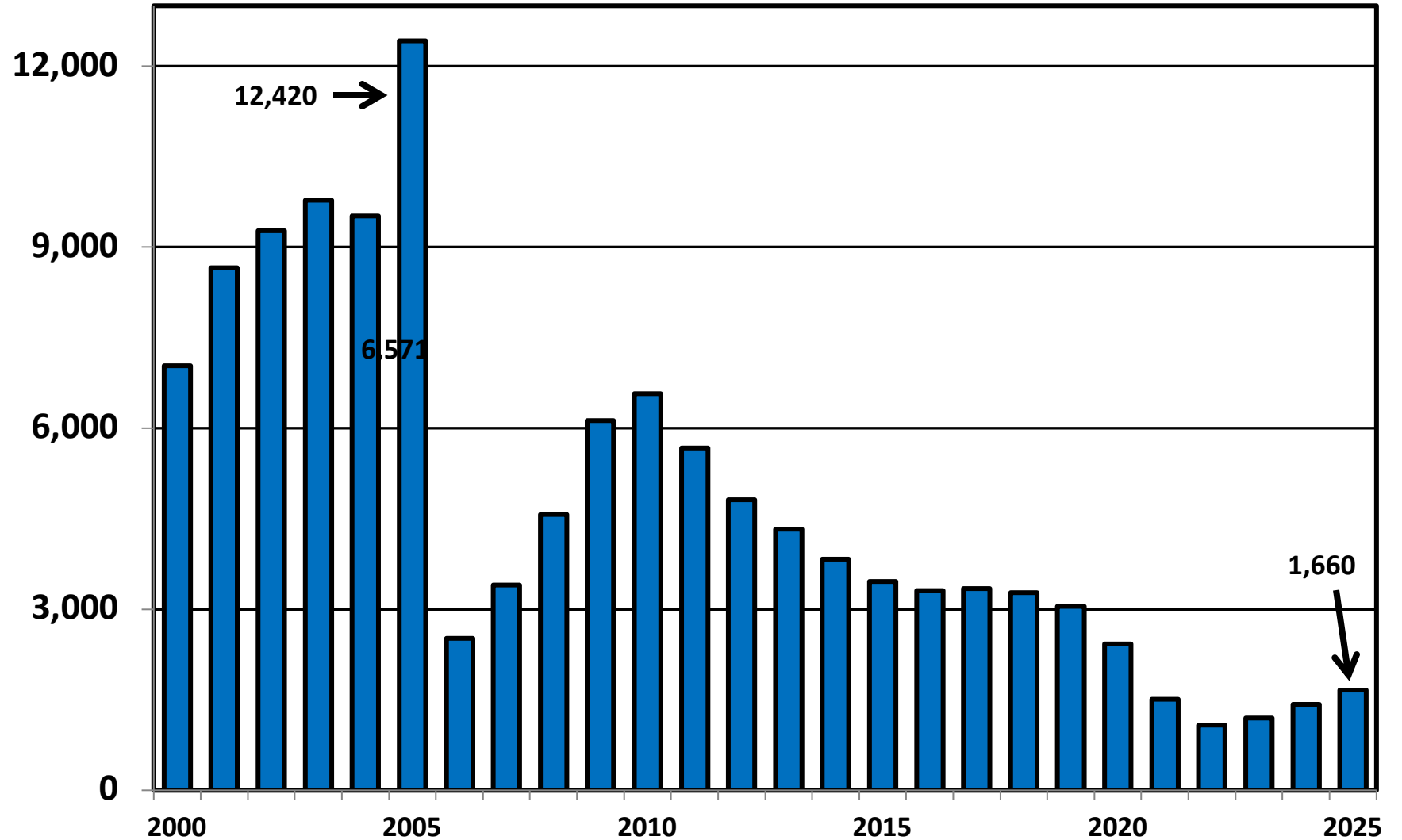


Prepared by the American Bankruptcy Institute  
[www.abi.org](http://www.abi.org)



AMERICAN  
BANKRUPTCY  
INSTITUTE

## District of New Mexico Total Bankruptcy Cases Filed 2000 - 2025



# Bankruptcy Filing Trends in New Mexico: 2000-2025



Prepared by the American Bankruptcy Institute  
[www.abi.org](http://www.abi.org)



AMERICAN  
BANKRUPTCY  
INSTITUTE

## Total Filings Relative to Population 2000 - 2025



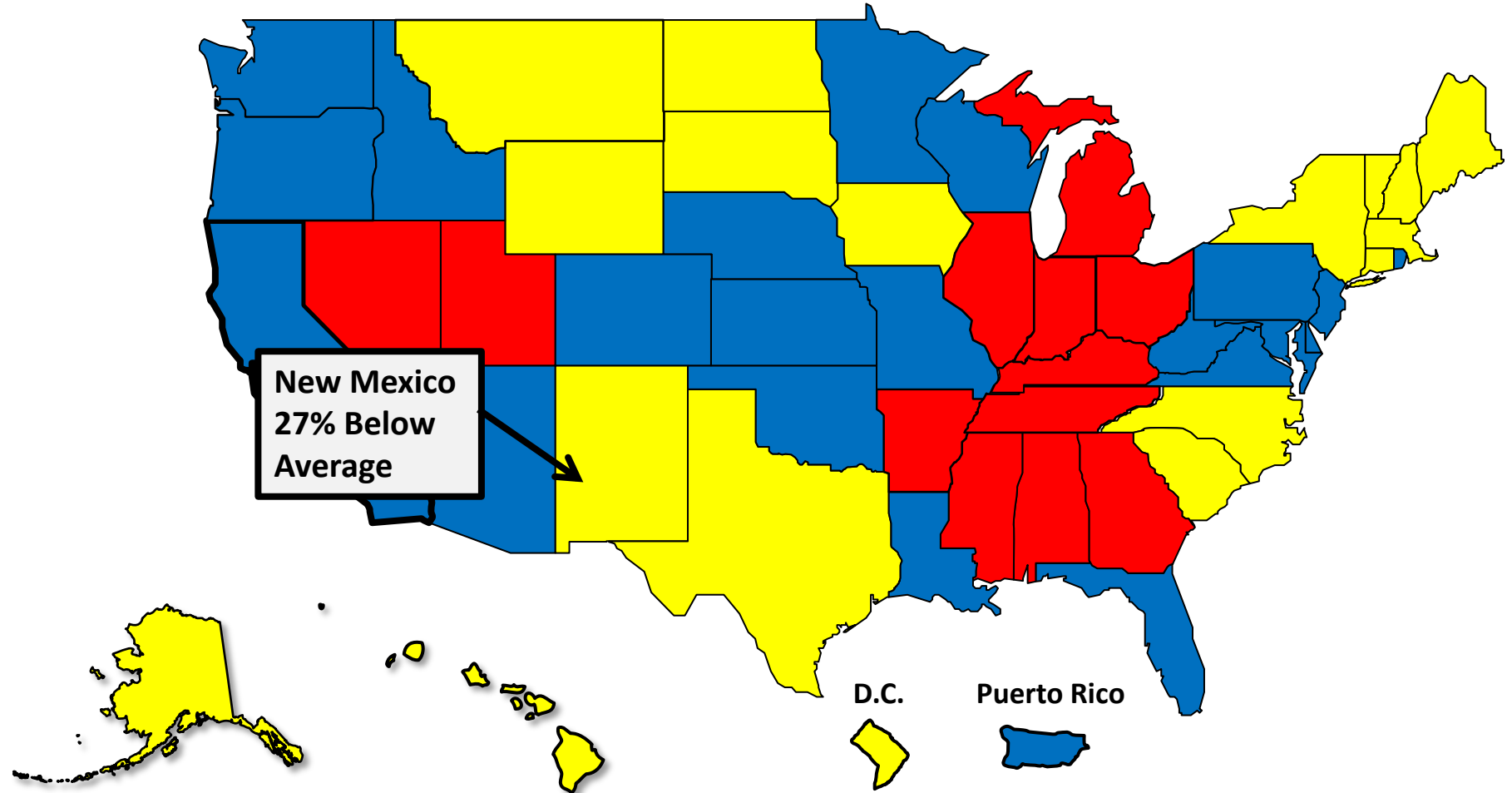
More than 25%  
Above Average



Within 25%  
of Average



More than 25%  
Below Average



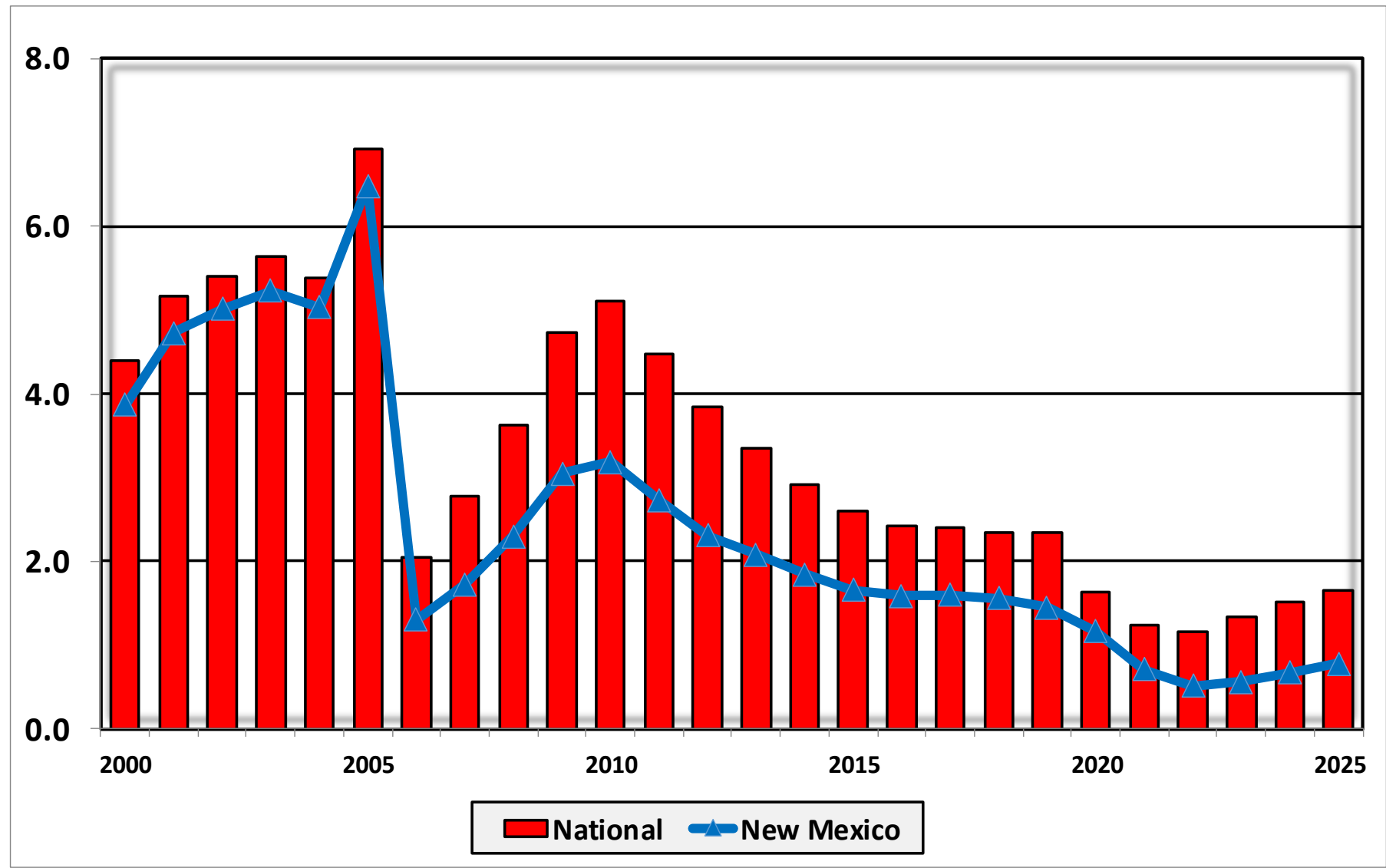
# Bankruptcy Filing Trends in New Mexico: 2000-2025



Prepared by the American Bankruptcy Institute  
[www.abi.org](http://www.abi.org)



## Bankruptcy Filings per 1,000 Population New Mexico vs. National Average 2000 - 2025



# Bankruptcy Filing Trends in New Mexico: 2000-2025

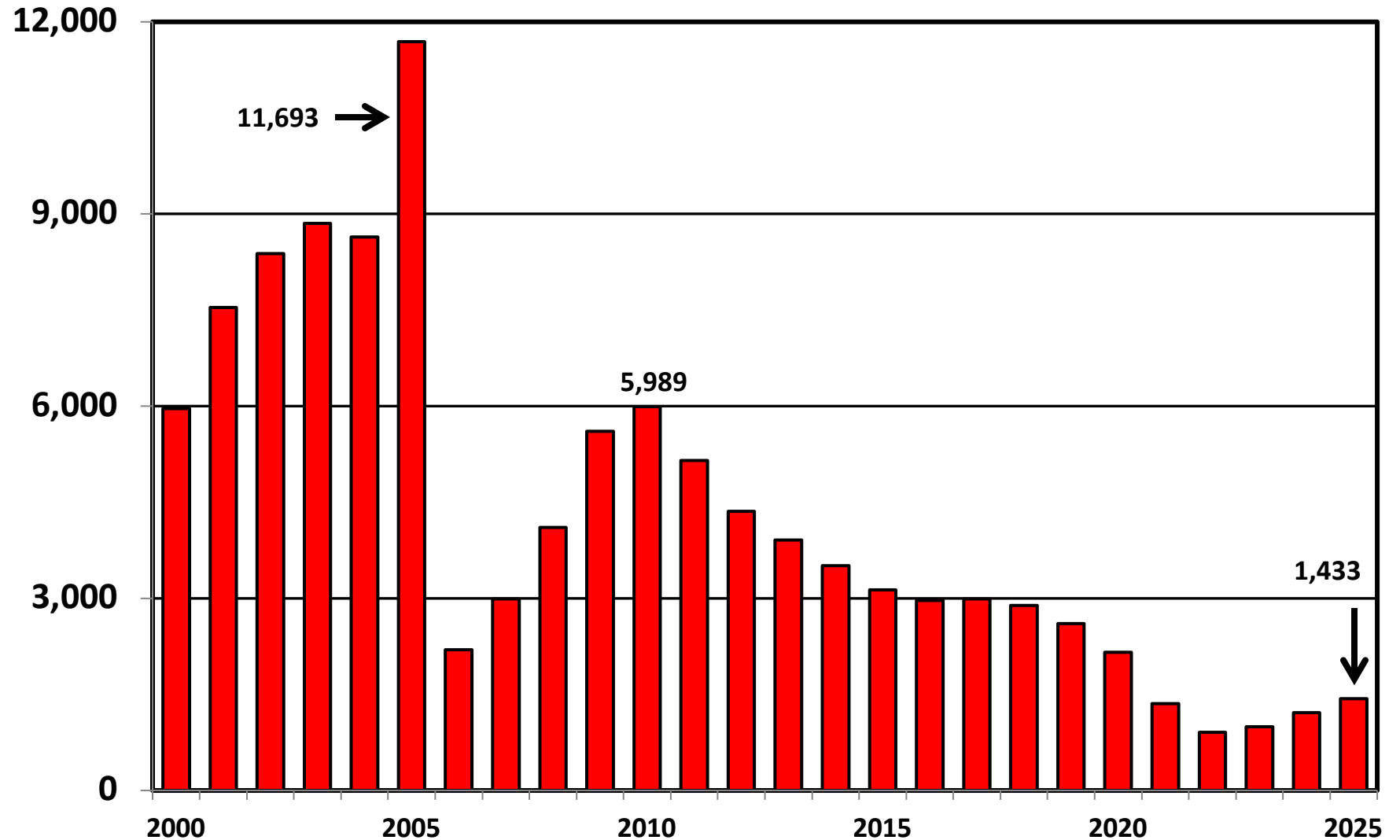


Prepared by the American  
Bankruptcy Institute  
[www.abi.org](http://www.abi.org)



AMERICAN  
BANKRUPTCY  
INSTITUTE

**District of New Mexico  
Chapter 7 Cases Filed 2000 - 2025**



# Bankruptcy Filing Trends in New Mexico: 2000-2025

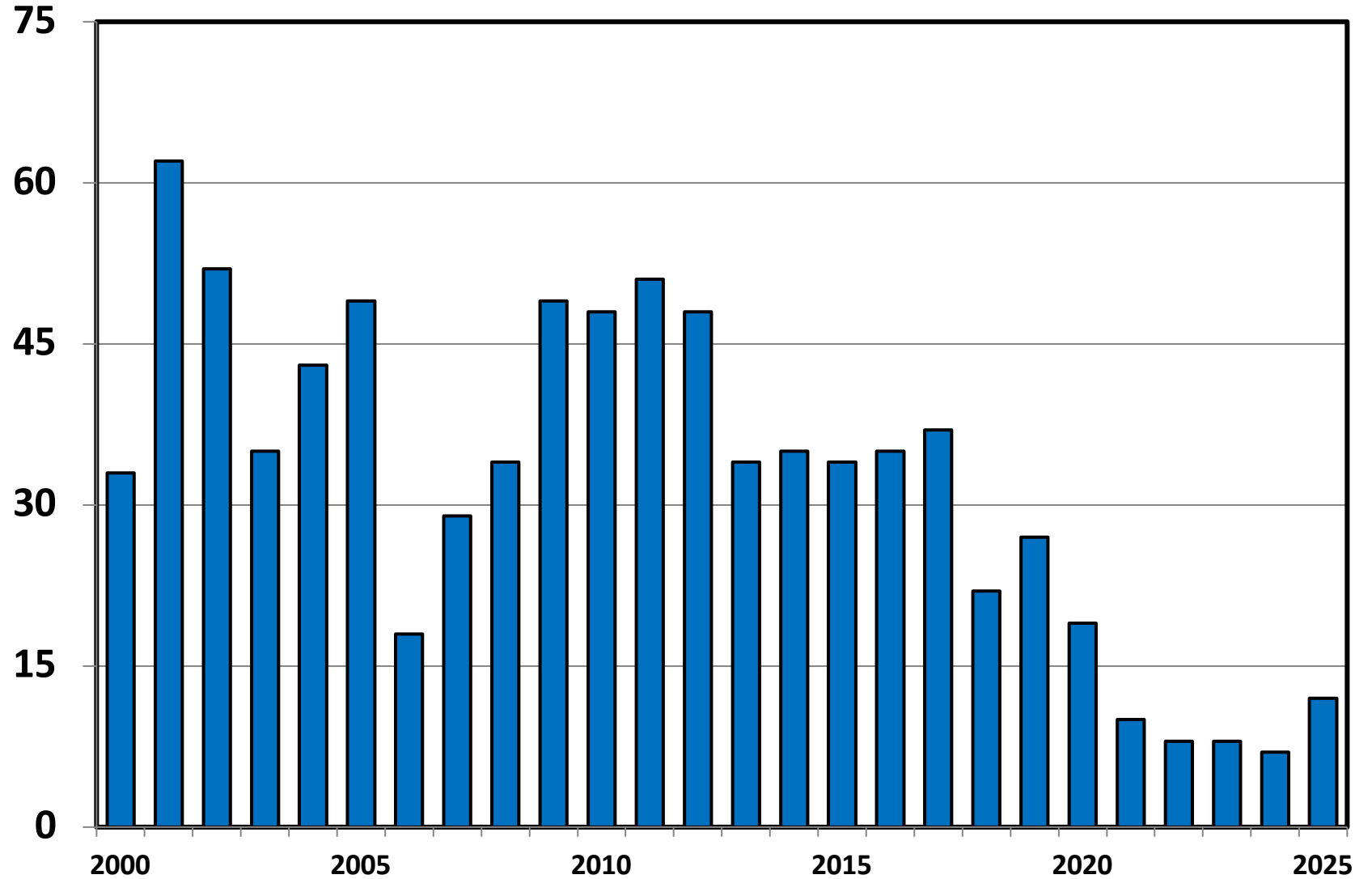


Prepared by the American  
Bankruptcy Institute  
[www.abi.org](http://www.abi.org)



AMERICAN  
BANKRUPTCY  
INSTITUTE

## Chapter 11 Cases Filed in New Mexico 2000 - 2025



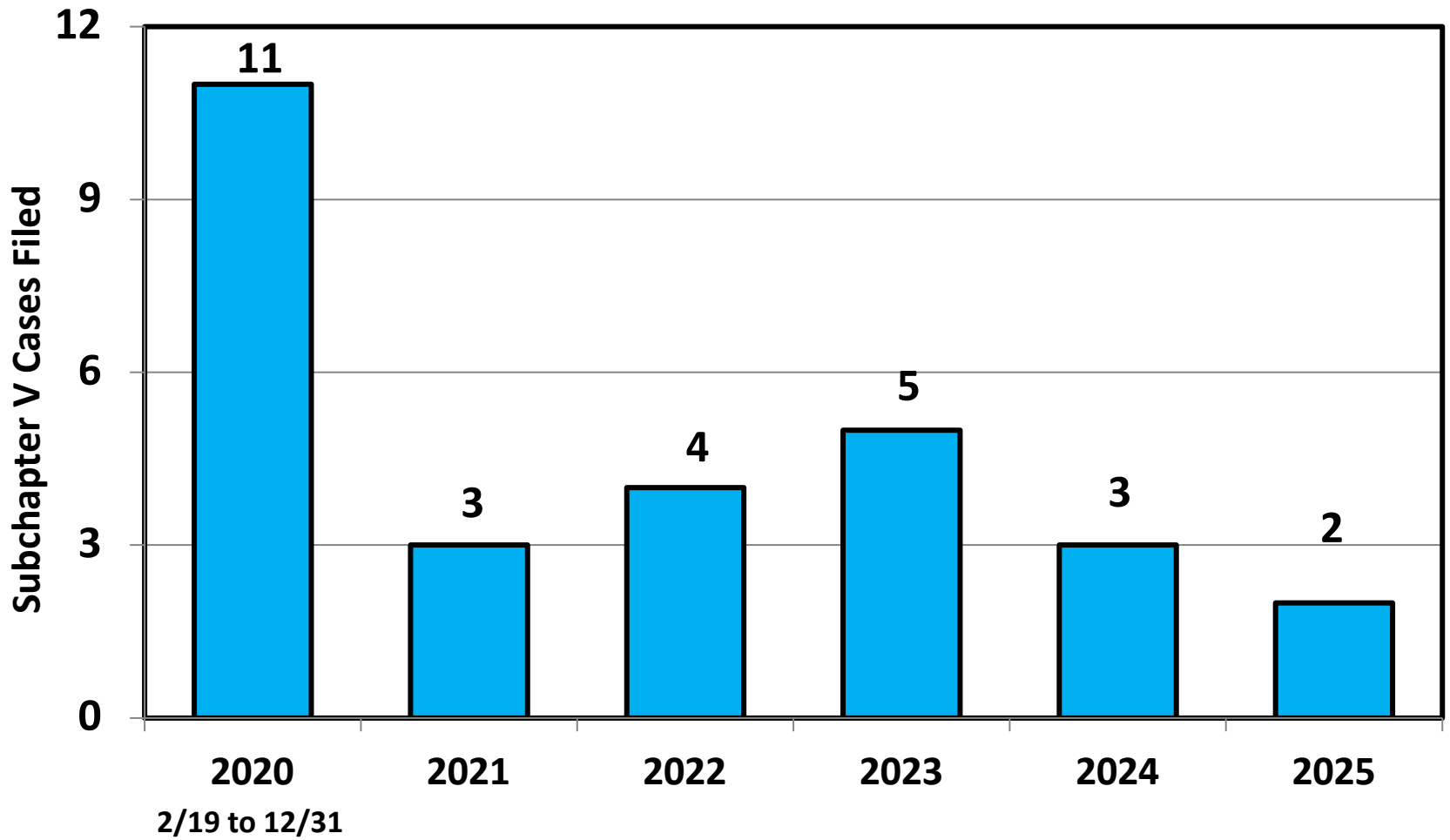
# Bankruptcy Filing Trends in New Mexico: 2000-2025



Prepared by the American  
Bankruptcy Institute  
[www.abi.org](http://www.abi.org)



## Subchapter V Cases Filed in New Mexico Calendar Years 2020 - 2025



Source: ABI review of PACER records

# Bankruptcy Filing Trends in New Mexico: 2000-2025

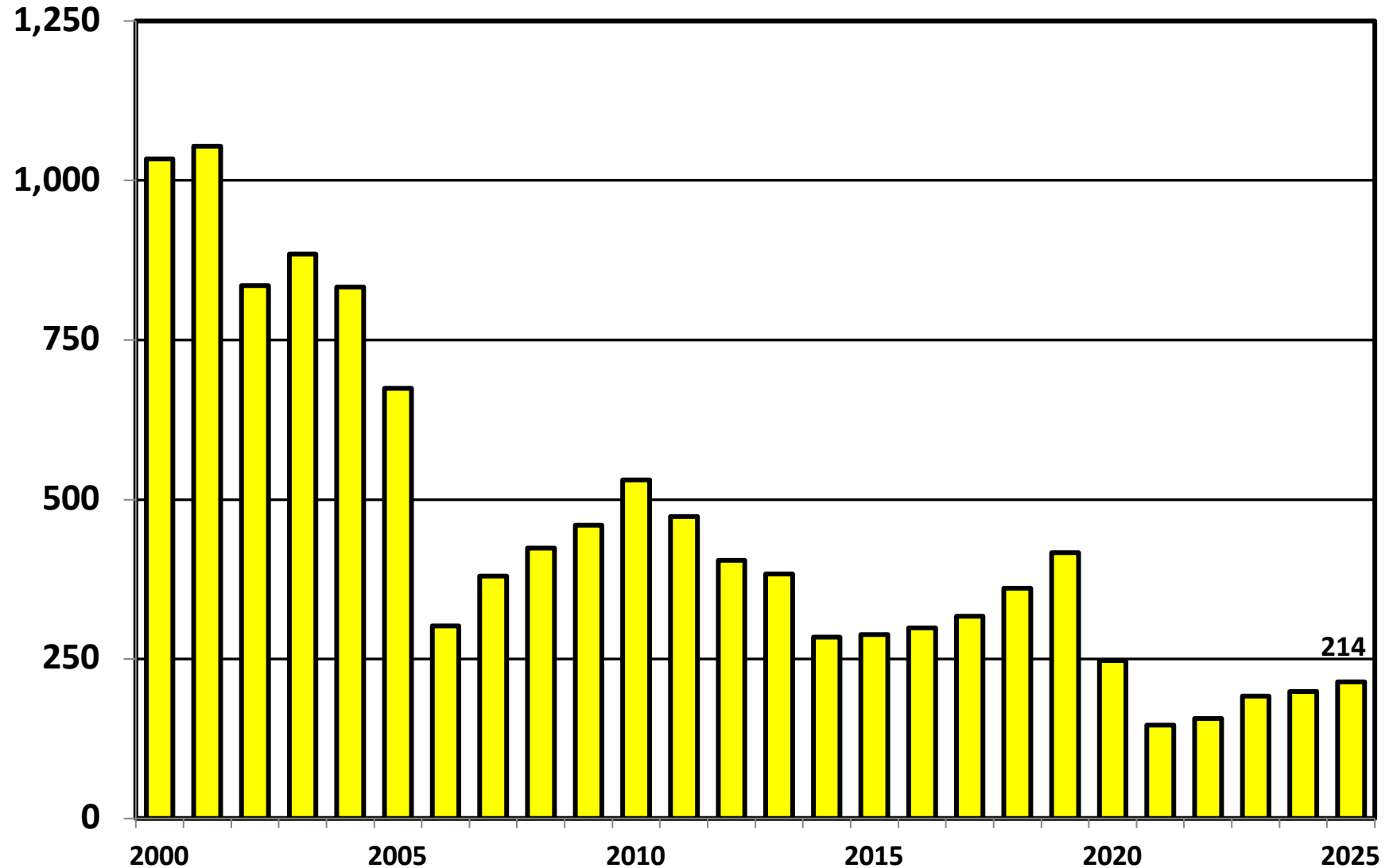


Prepared by the American  
Bankruptcy Institute  
[www.abi.org](http://www.abi.org)



AMERICAN  
BANKRUPTCY  
INSTITUTE

## District of New Mexico Chapter 13 Cases Filed 2000 - 2025



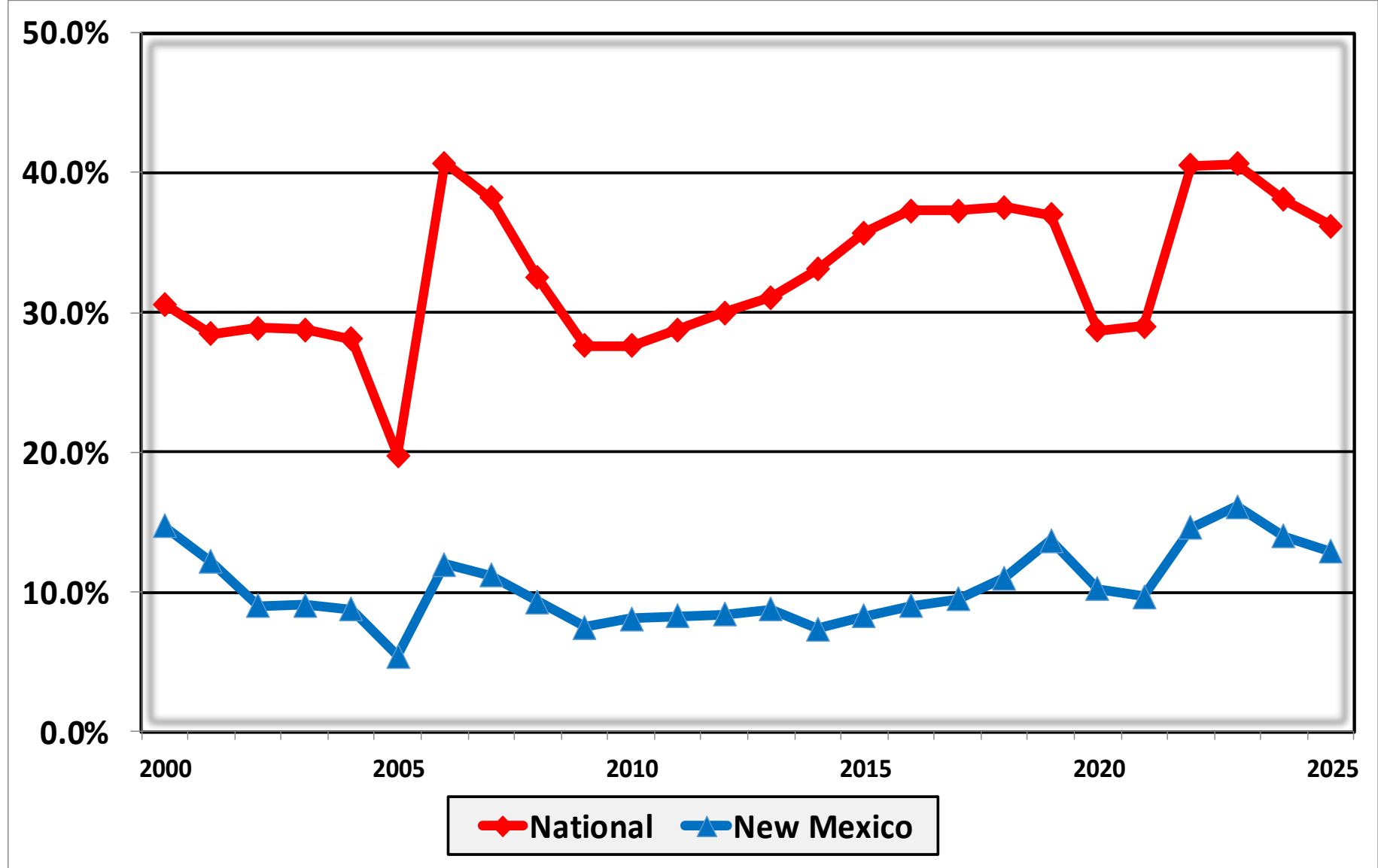
# Bankruptcy Filing Trends in New Mexico: 2000-2025



Prepared by the American Bankruptcy Institute  
[www.abi.org](http://www.abi.org)



## Percent of Cases Filed as Chapter 13 Calendar Years 2000 - 2025



# Bankruptcy Filing Trends in New Mexico: 2000-2025

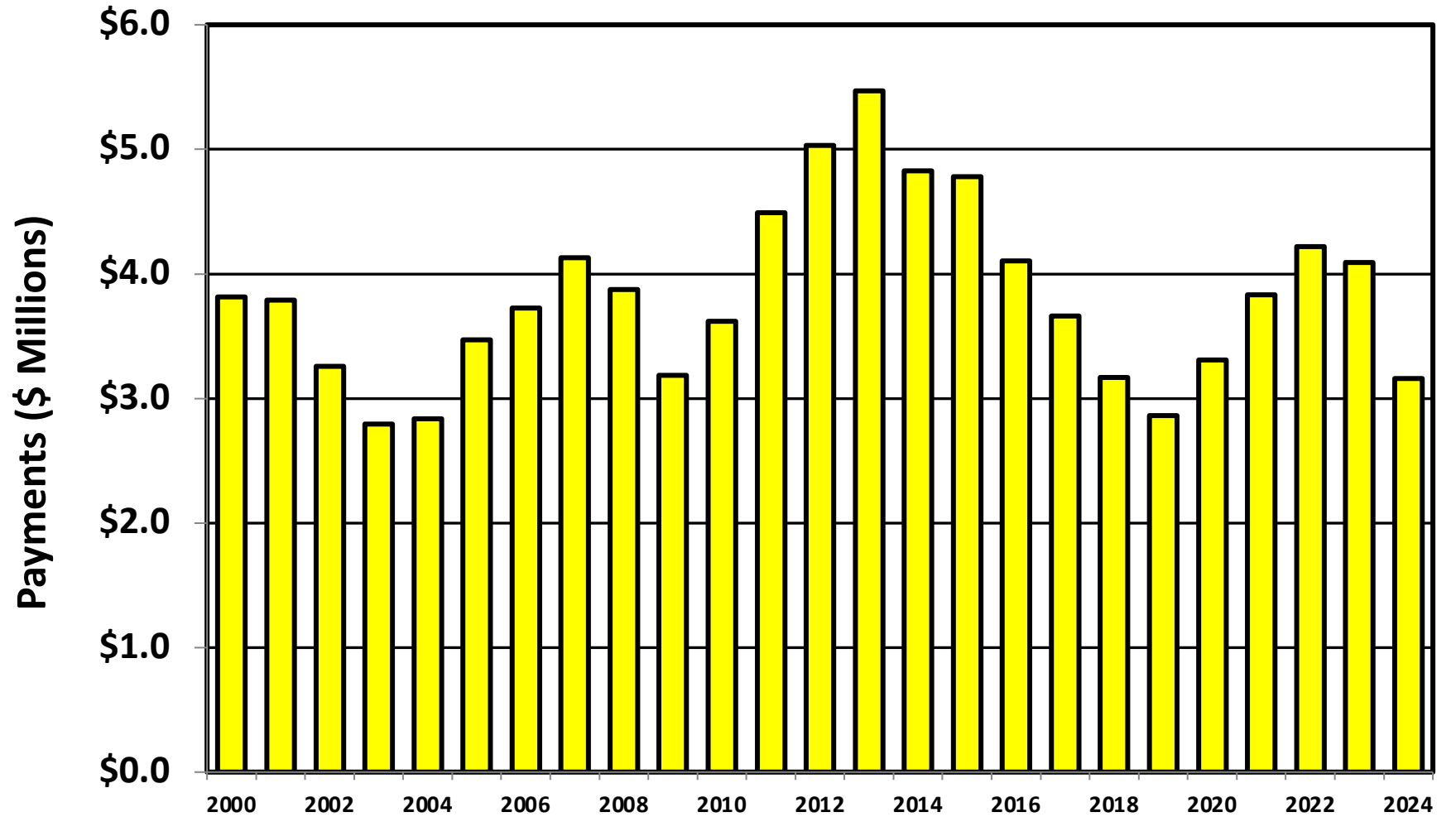


Prepared by the American  
Bankruptcy Institute  
[www.abi.org](http://www.abi.org)



AMERICAN  
BANKRUPTCY  
INSTITUTE

## Chapter 13 Cases in New Mexico Amount (in Millions) Paid to Unsecured Creditors Fiscal Years 2000 - 2024



Source: Executive Office for United States Trustees

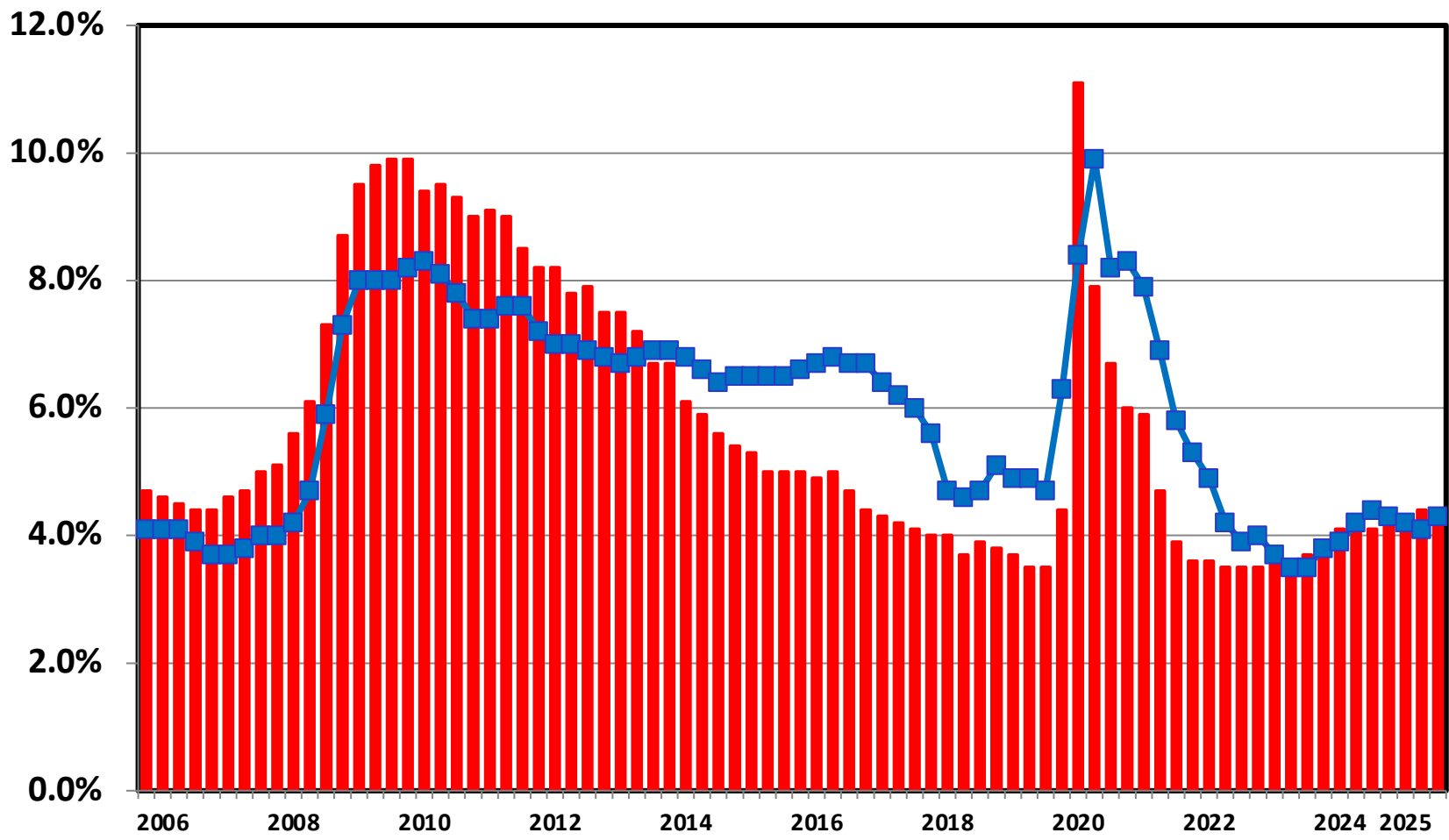
# Bankruptcy Filing Trends in New Mexico: 2000-2025



Prepared by the American Bankruptcy Institute  
[www.abi.org](http://www.abi.org)



## Unemployment Rate By Quarter 2006 - 2025



■ National    ■ New Mexico

Source: Bureau of Labor Statistics

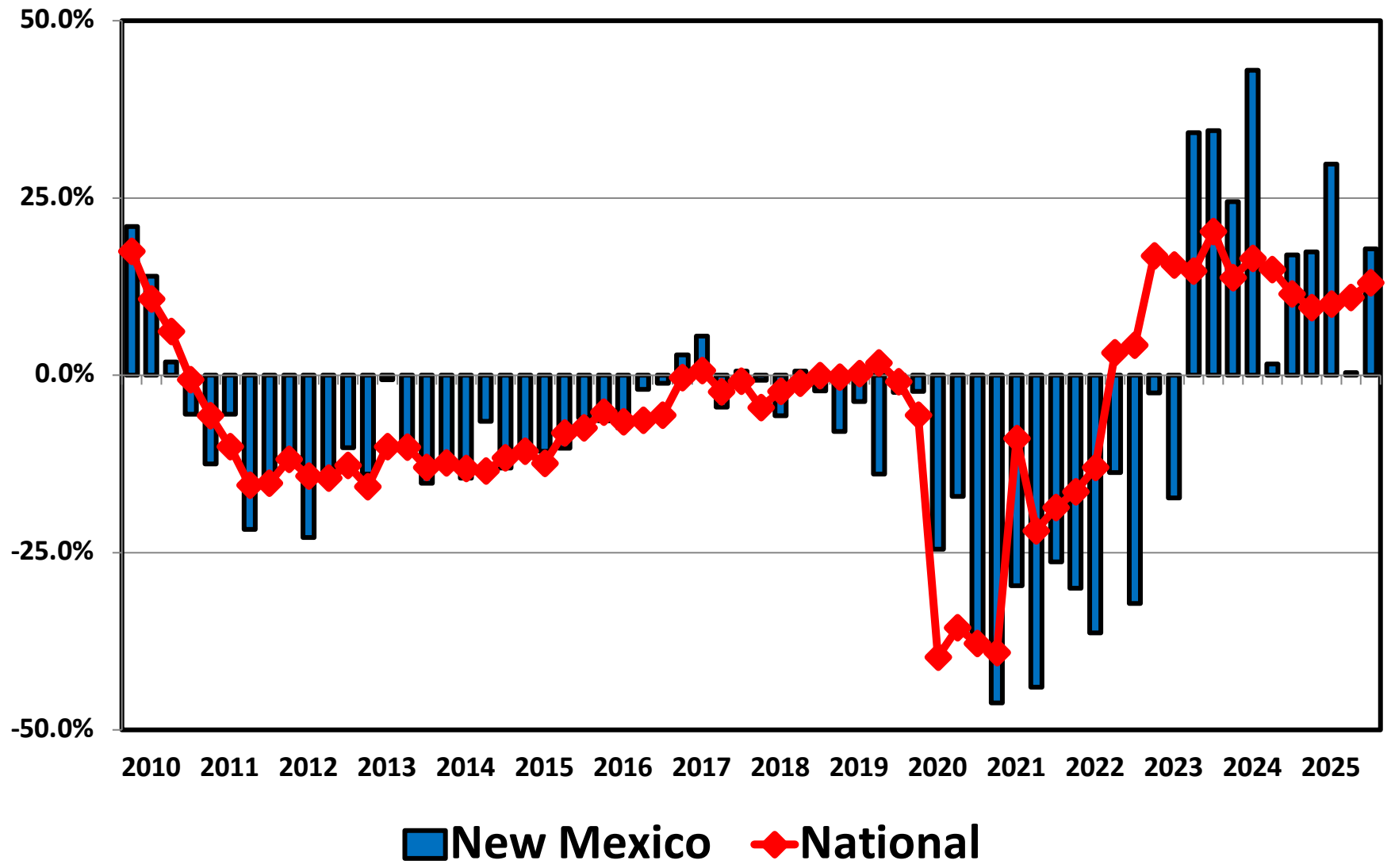
# Bankruptcy Filing Trends in New Mexico: 2000-2025



Prepared by the American Bankruptcy Institute  
[www.abi.org](http://www.abi.org)



## Filing Trends By Quarter New Mexico vs. National Average (Percent Change From Same Quarter One Year Prior)



# Bankruptcy Filing Trends in New Mexico: 2000-2025



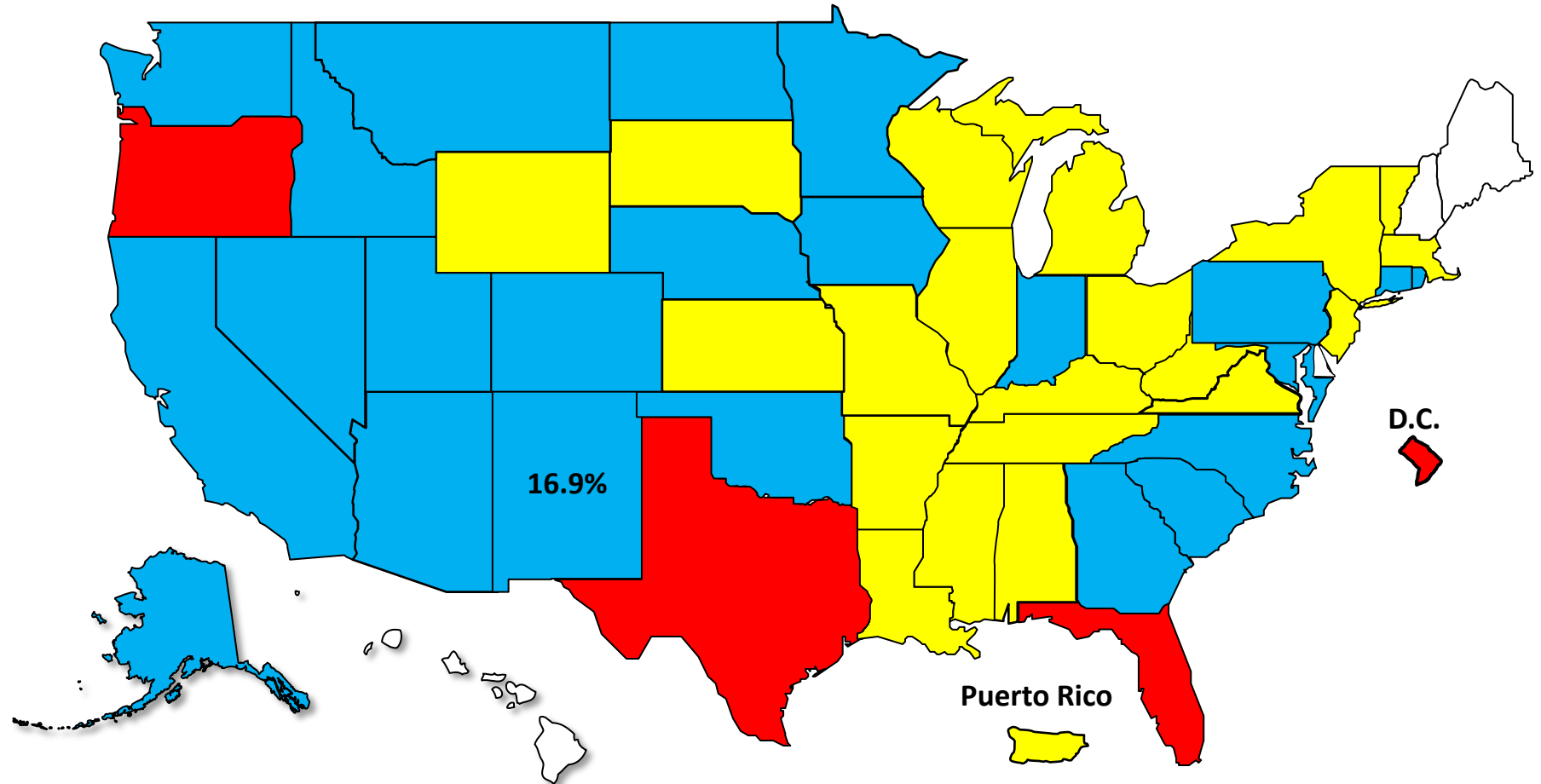
Prepared by the American Bankruptcy Institute  
[www.abi.org](http://www.abi.org)



AMERICAN BANKRUPTCY INSTITUTE

## Bankruptcy Filing Trends Calendar Year 2025 vs. 2024 National Average = 11.0% Increase

+20% or More    +10.0% to 19.9%    +0% to 9.9%    Decline



# Bankruptcy Filing Trends in New Mexico: 2000-2025



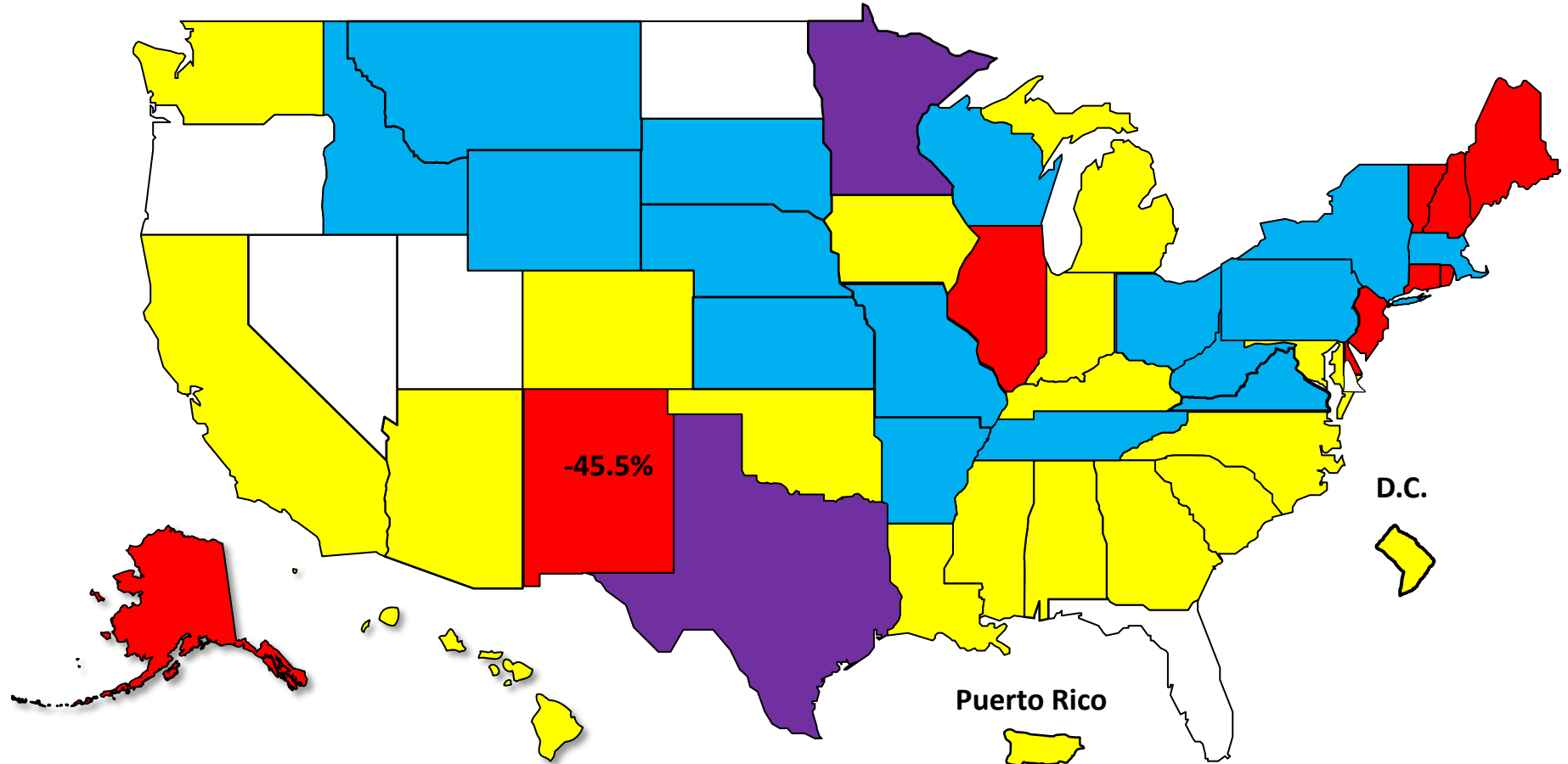
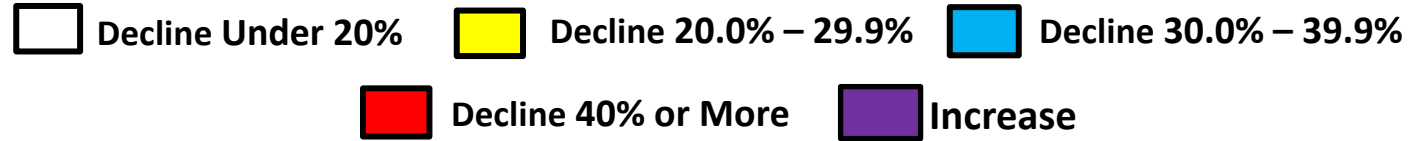
Prepared by the American Bankruptcy Institute  
[www.abi.org](http://www.abi.org)



AMERICAN BANKRUPTCY INSTITUTE

## Bankruptcy Filing Trends Since the Pandemic Calendar Year 2025 vs. 2019

National Average = 25.9% Decrease



# Bankruptcy Filing Trends in New Mexico: 2000-2025

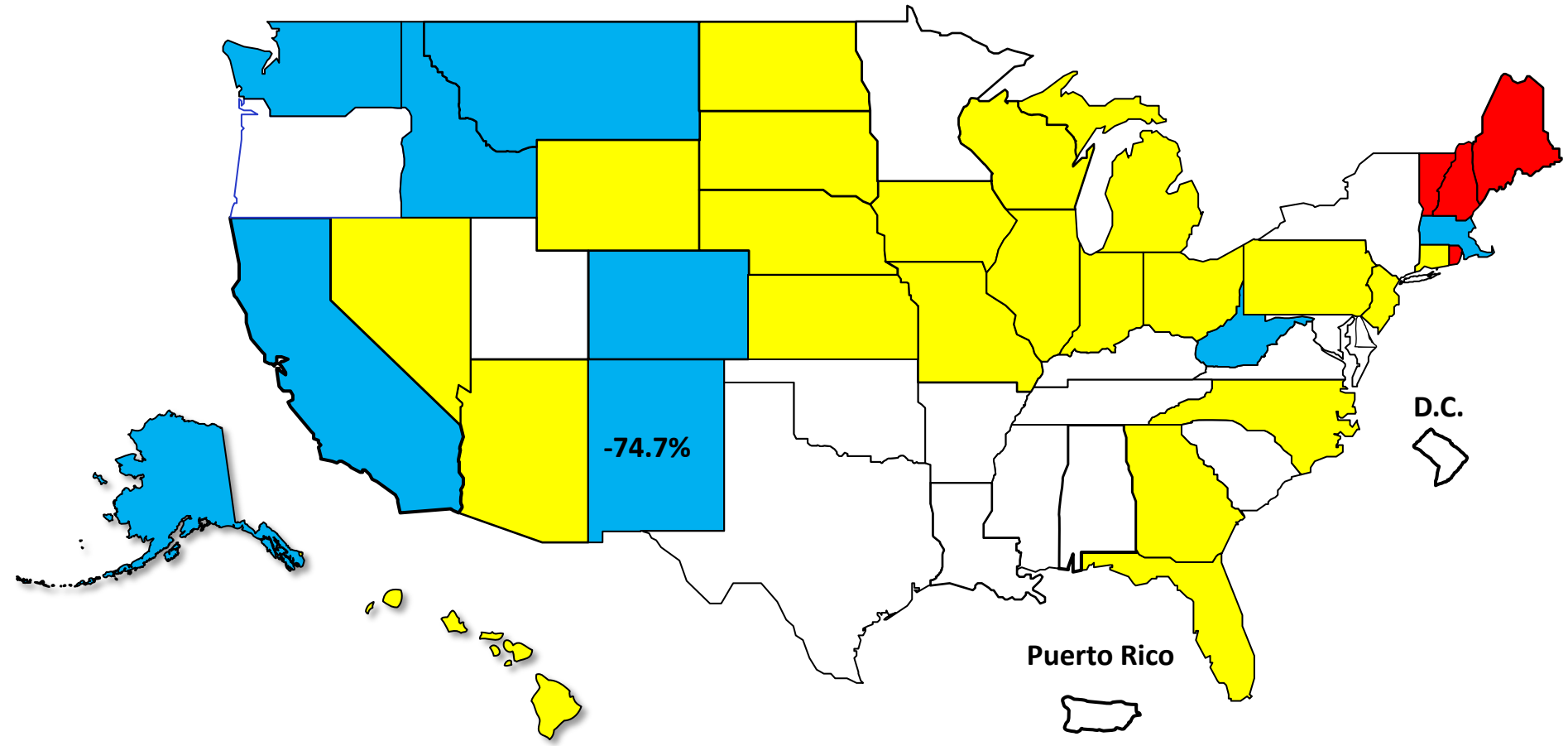


Prepared by the American Bankruptcy Institute  
[www.abi.org](http://www.abi.org)



## Percent Change in Total Filings Calendar Year 2025 Compared to 2010 (National Average = 63.9% Decrease)

### Amount of Decrease





# AMERICAN BANKRUPTCY INSTITUTE

Prepared by the American Bankruptcy Institute. [www.abi.org](http://www.abi.org)