

Bankruptcy Filing Trends in Nevada: 2000-2025



Prepared by the American Bankruptcy Institute. www.abi.org



AMERICAN
BANKRUPTCY
INSTITUTE

Bankruptcy Filing Trends in Nevada: 2000-2025



Prepared by the American
Bankruptcy Institute
www.abi.org



Nevada

State at a Glance		
	Nevada	National
Population (7/1/2025)	3,282,188	341,784,857
- Change since April 2020	5.7%	3.1%
- Foreign Born	19.1%	14.1%
Size (Square Miles)	109,860	3,533,038
Median Household Income	\$78,260	\$80,734
Persons per Household	2.62	2.53
Per Capita Income	\$41,354	\$44,673
Median Home Value	\$435,400	\$332,700
Homeownership Rate	60.0%	65.2%
High School Graduate (or Higher)	87.5%	89.6%
College Graduate (or Higher)	27.9%	35.7%
Disabled	9.8%	9.3%
No Health Insurance	13.5%	9.6%
In Poverty	11.6%	10.6%
Source: U.S. Census Bureau January 2026		

Bankruptcy Filing Trends in Nevada: 2000-2025



Prepared by the American
Bankruptcy Institute
www.abi.org



AMERICAN
BANKRUPTCY
INSTITUTE

Bankruptcy Filings in Nevada Calendar Years 2000 - 2025					
Year	Total	Chapter 7	Chapter 11	Chapter 13	Other Cases*
2025	9,408	7,805	117	1,486	0
2024	8,302	6,789	84	1,428	1
2023	6,891	5,486	100	1,305	0
2022	5,523	4,504	109	910	0
2021	6,995	6,173	91	731	0
2020	8,007	6,998	113	895	1
2019	10,046	7,983	141	1,922	0
2018	9,404	7,479	161	1,764	0
2017	8,830	6,758	190	1,881	1
2016	9,017	6,864	216	1,931	6
2015	9,392	7,370	195	1,827	0
2014	11,184	9,108	210	1,859	7
2013	13,927	11,316	277	2,332	2
2012	17,823	14,197	345	3,279	2
2011	24,519	18,842	479	5,194	4
2010	30,143	22,581	463	7,097	2
2009	29,808	21,519	445	7,844	0
2008	18,716	13,039	185	5,489	3
2007	10,953	6,740	107	4,106	0
2006	5,517	3,552	93	1,872	0
2005	23,786	20,059	117	3,610	0
2004	16,912	13,265	100	3,547	0
2003	20,561	15,371	137	5,052	1
2002	19,736	14,615	316	4,803	2
2001	18,102	13,429	230	4,442	1
2000	14,010	10,219	137	3,652	2
*Chapters 9, 12 and 15					

Bankruptcy Filing Trends in Nevada: 2000-2025



Prepared by the American
Bankruptcy Institute
www.abi.org



AMERICAN
BANKRUPTCY
INSTITUTE

Business Bankruptcy Cases Filed - Nevada Years Ended December 31, 2000 - 2025					
CALENDAR YEAR	TOTAL FILINGS	CHAPTER 7	CHAPTER 11	CHAPTER 13	OTHER CASES*
2025	361	244	113	4	0
2024	267	183	77	6	1
2023	225	130	90	5	0
2022	212	114	94	4	0
2021	226	143	76	7	0
2020	255	154	90	10	1
2019	307	201	96	10	0
2018	307	206	96	5	0
2017	279	161	98	19	1
2016	295	167	102	20	6
2015	356	224	111	21	0
2014	427	275	125	21	6
2013	544	347	175	20	2
2012	624	376	216	30	2
2011	989	623	330	32	4
2010	982	610	335	35	2
2009	978	588	357	33	0
2008	505	315	171	16	3
2007	321	204	103	14	0
2006	178	82	88	8	0
2005	333	196	110	27	0
2004	257	138	95	24	0
2003	321	176	123	22	0
2002	462	157	280	23	2
2001	419	174	219	25	1
2000	332	168	130	32	2
* Chapters 9, 12 and 15					

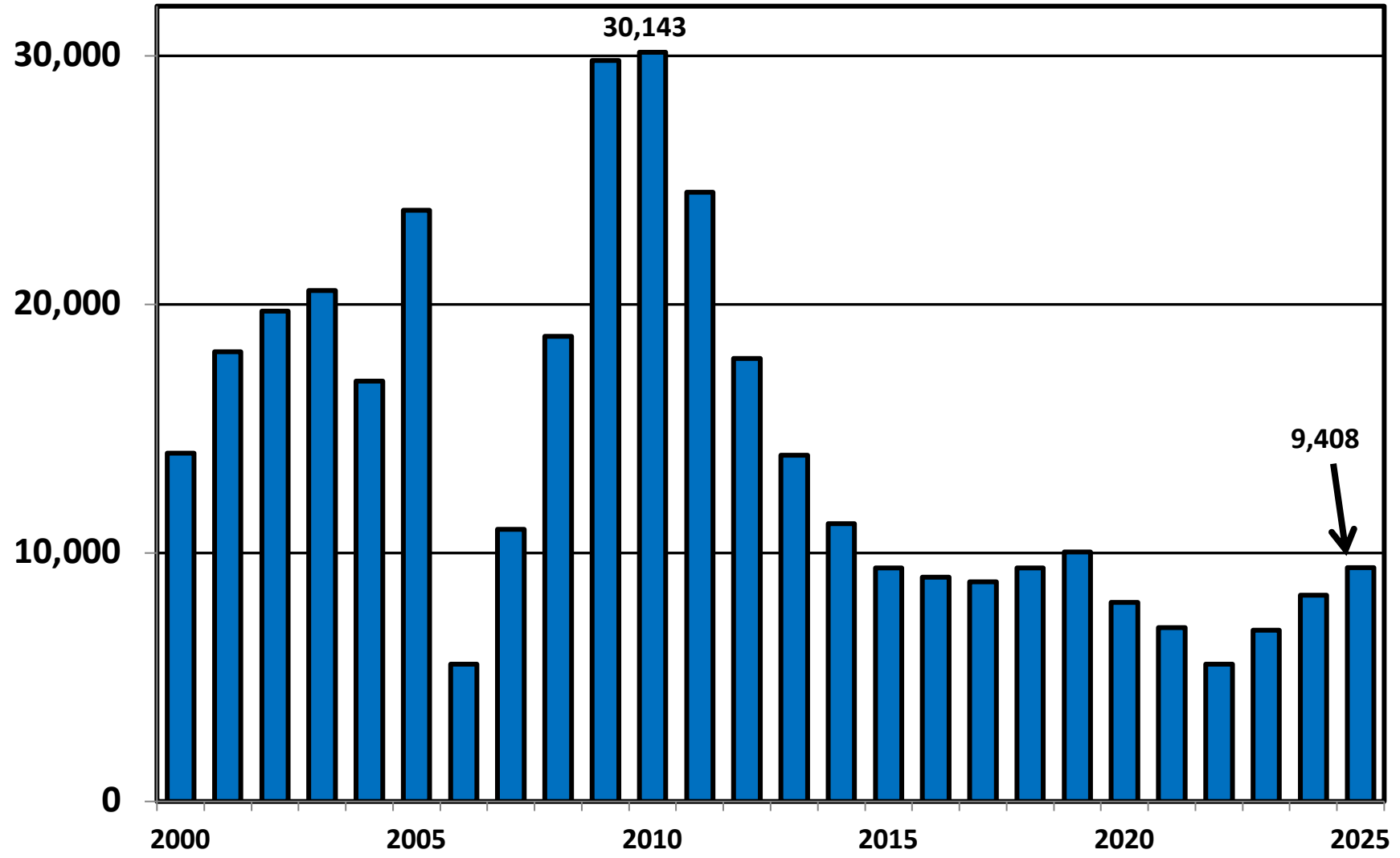
Bankruptcy Filing Trends in Nevada: 2000-2025



Prepared by the American
Bankruptcy Institute
www.abi.org



District of Nevada Total Bankruptcy Cases Filed 2000 - 2025



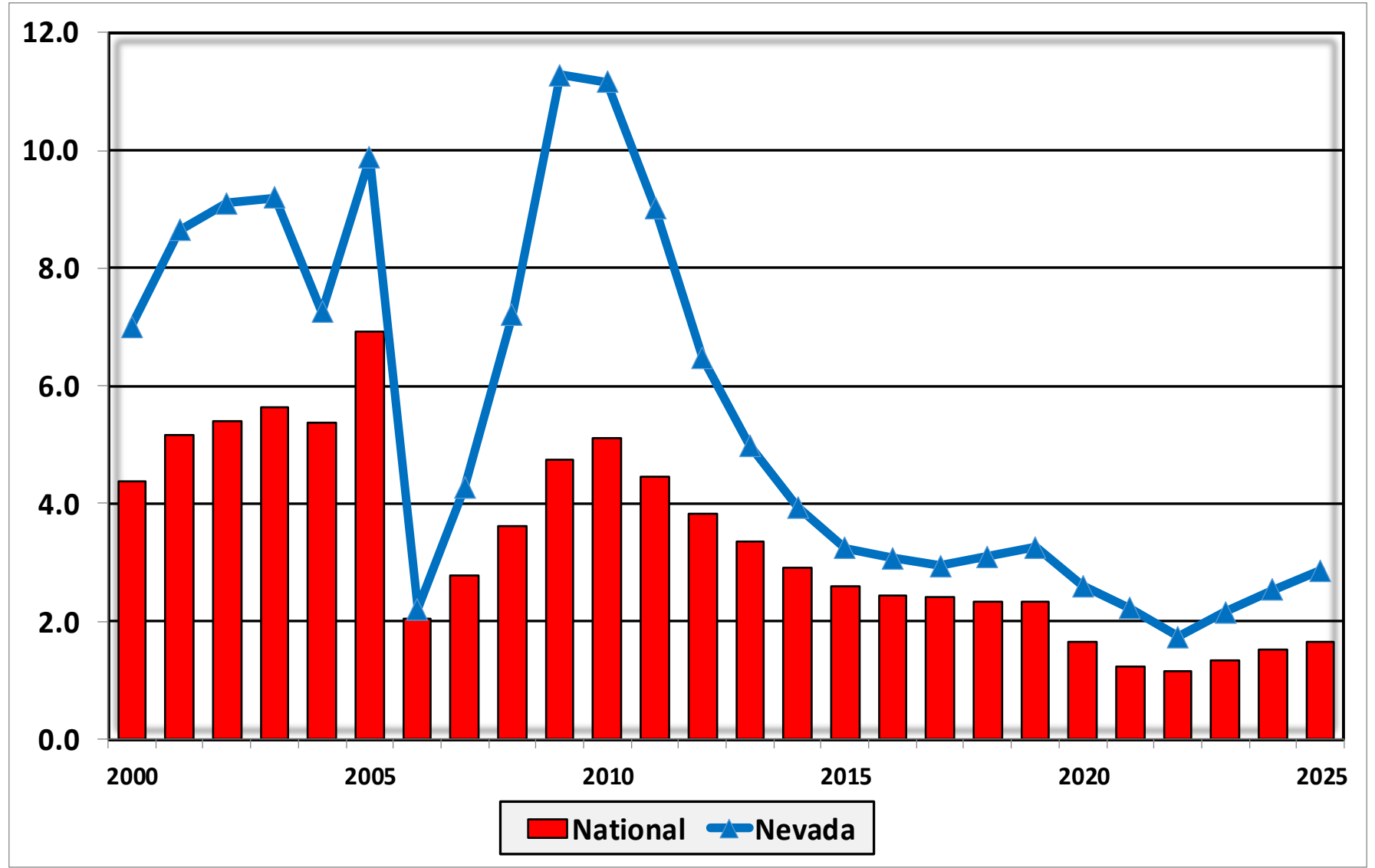
Bankruptcy Filing Trends in Nevada: 2000-2025



Prepared by the American Bankruptcy Institute
www.abi.org



Bankruptcy Filings per 1,000 Population Nevada vs. National Average 2000 - 2025



Bankruptcy Filing Trends in Nevada: 2000-2025



Prepared by the American Bankruptcy Institute
www.abi.org



Total Filings Relative to Population 2000 - 2025



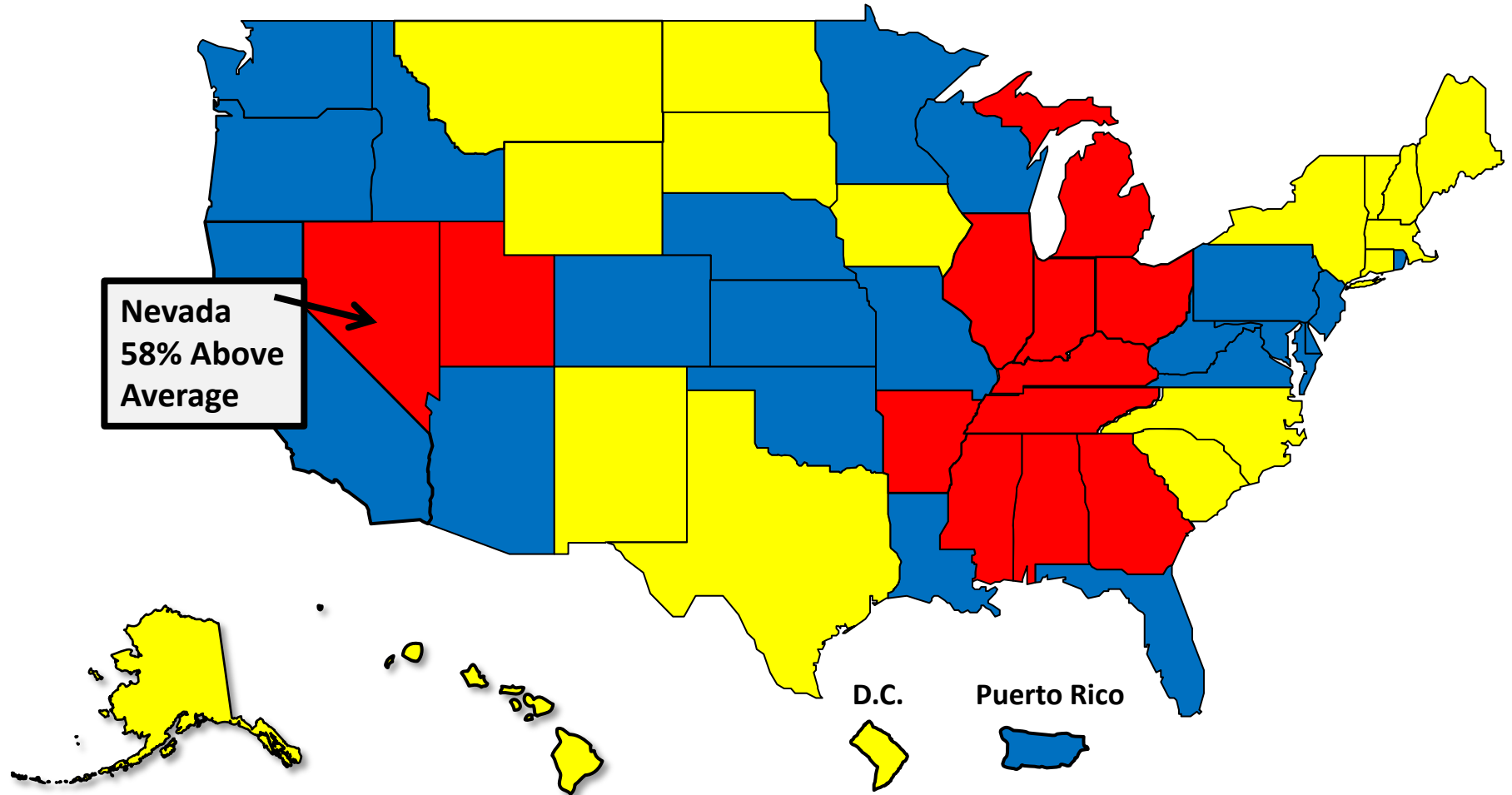
More than 25% Above Average



Within 25% of Average



More than 25% Below Average



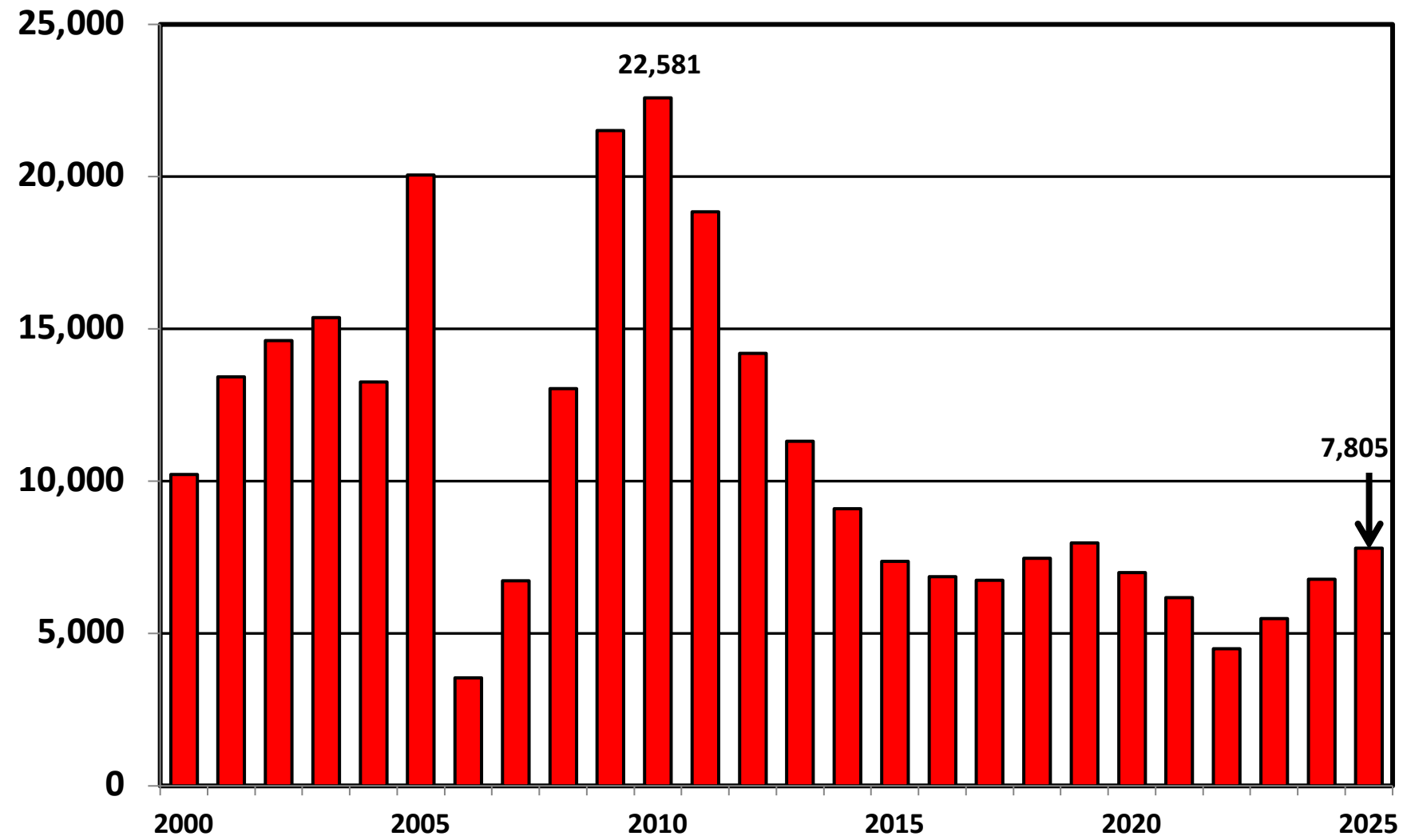
Bankruptcy Filing Trends in Nevada: 2000-2025



Prepared by the American Bankruptcy Institute
www.abi.org



District of Nevada Chapter 7 Cases Filed 2000 - 2025



Bankruptcy Filing Trends in Nevada: 2000-2025

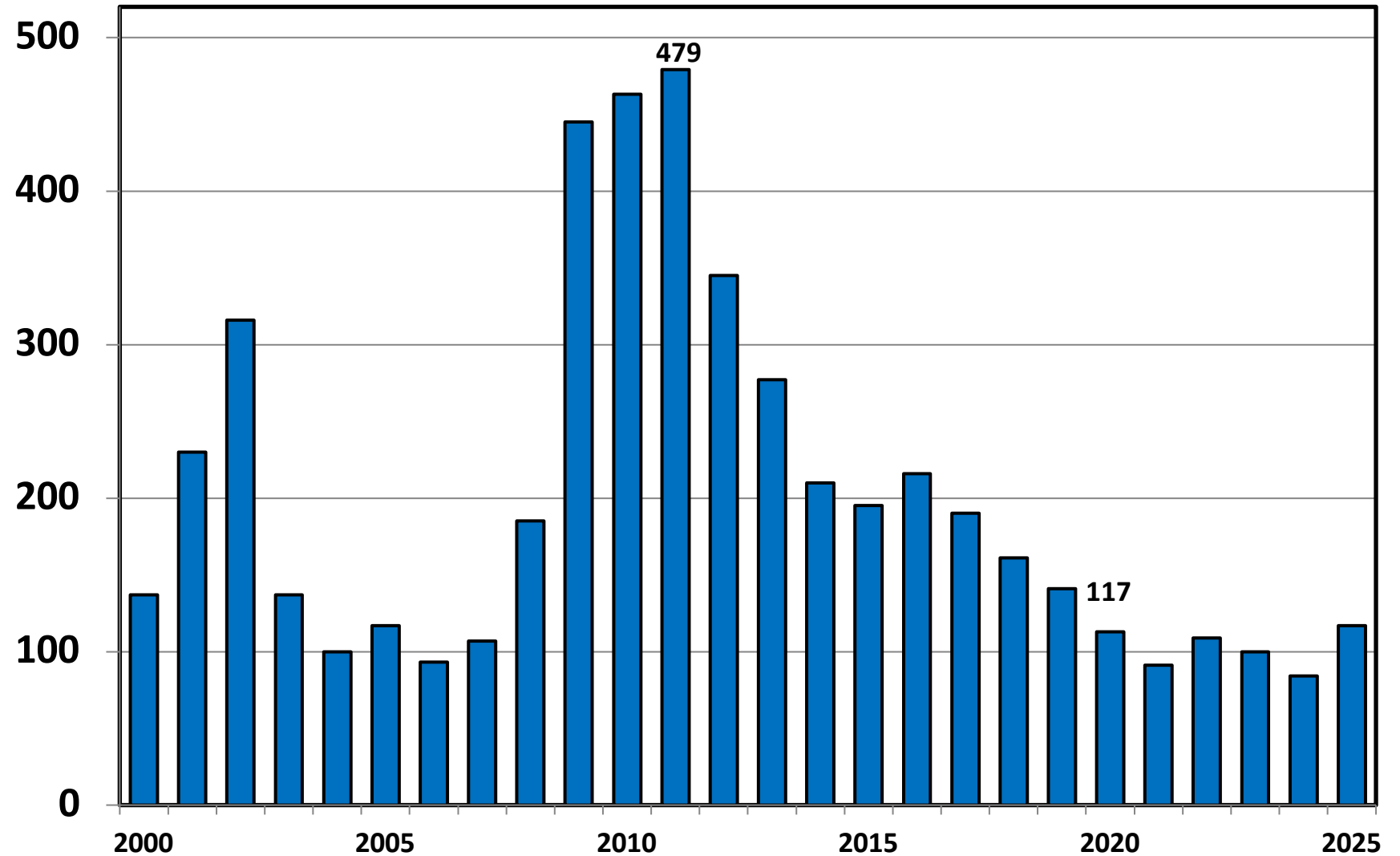


Prepared by the American
Bankruptcy Institute
www.abi.org



AMERICAN
BANKRUPTCY
INSTITUTE

Chapter 11 Cases Filed in Nevada 2000 - 2025



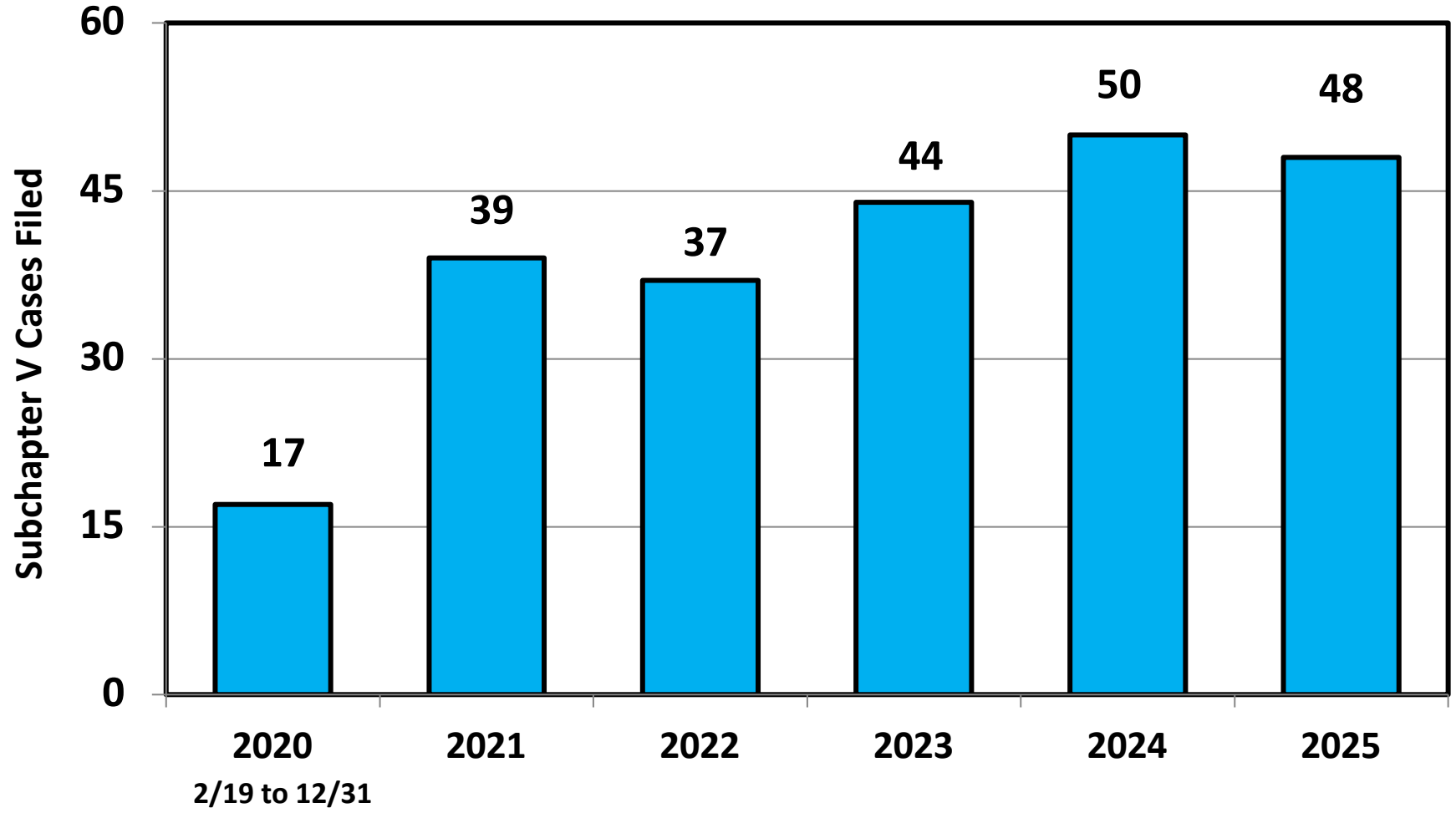
Bankruptcy Filing Trends in Nevada: 2000-2025



Prepared by the American
Bankruptcy Institute
www.abi.org



Subchapter V Cases Filed in Nevada Calendar Years 2020 - 2025



Source: ABI review of PACER records

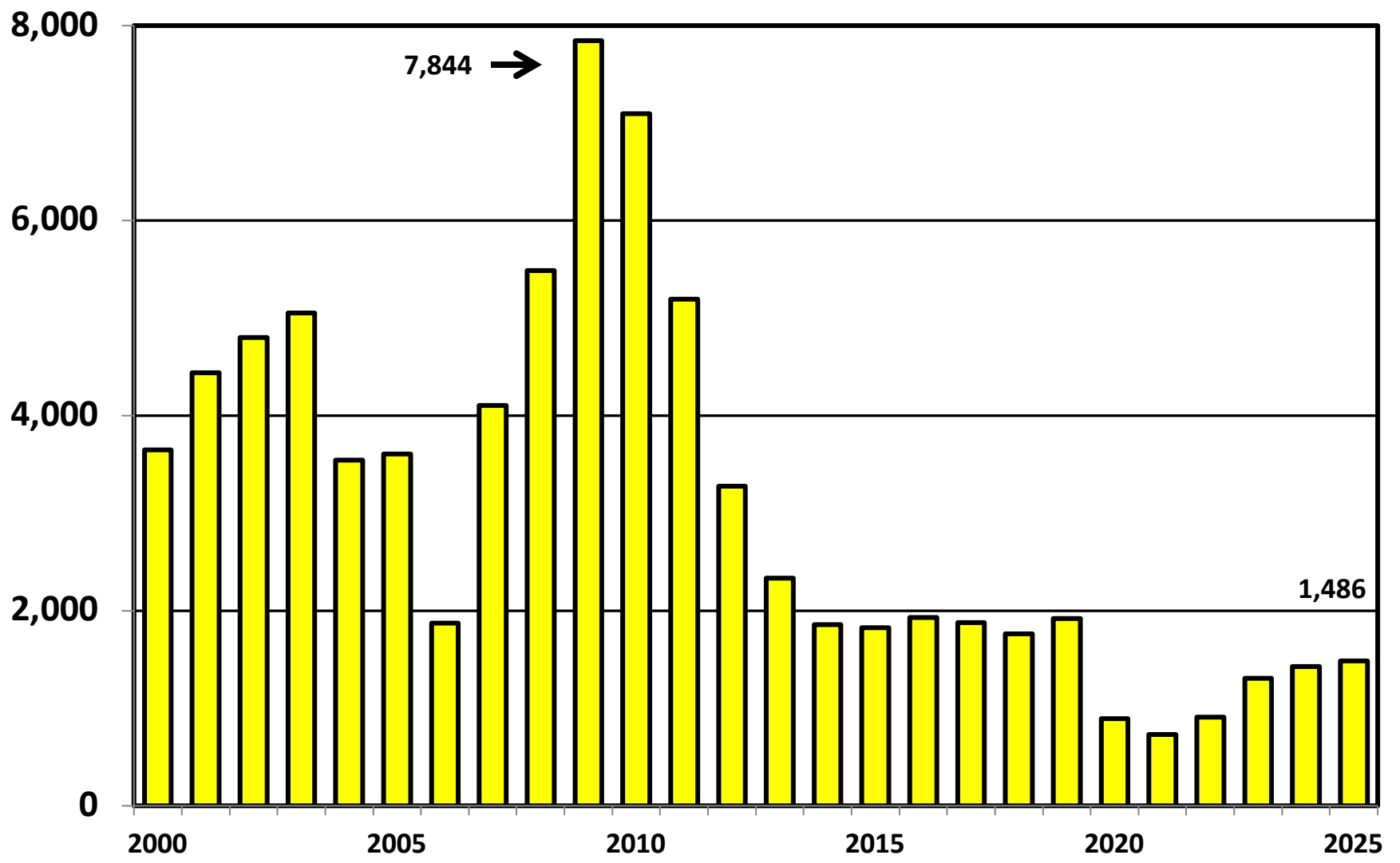
Bankruptcy Filing Trends in Nevada: 2000-2025



Prepared by the American Bankruptcy Institute
www.abi.org



District of Nevada Chapter 13 Cases Filed 2000 - 2025



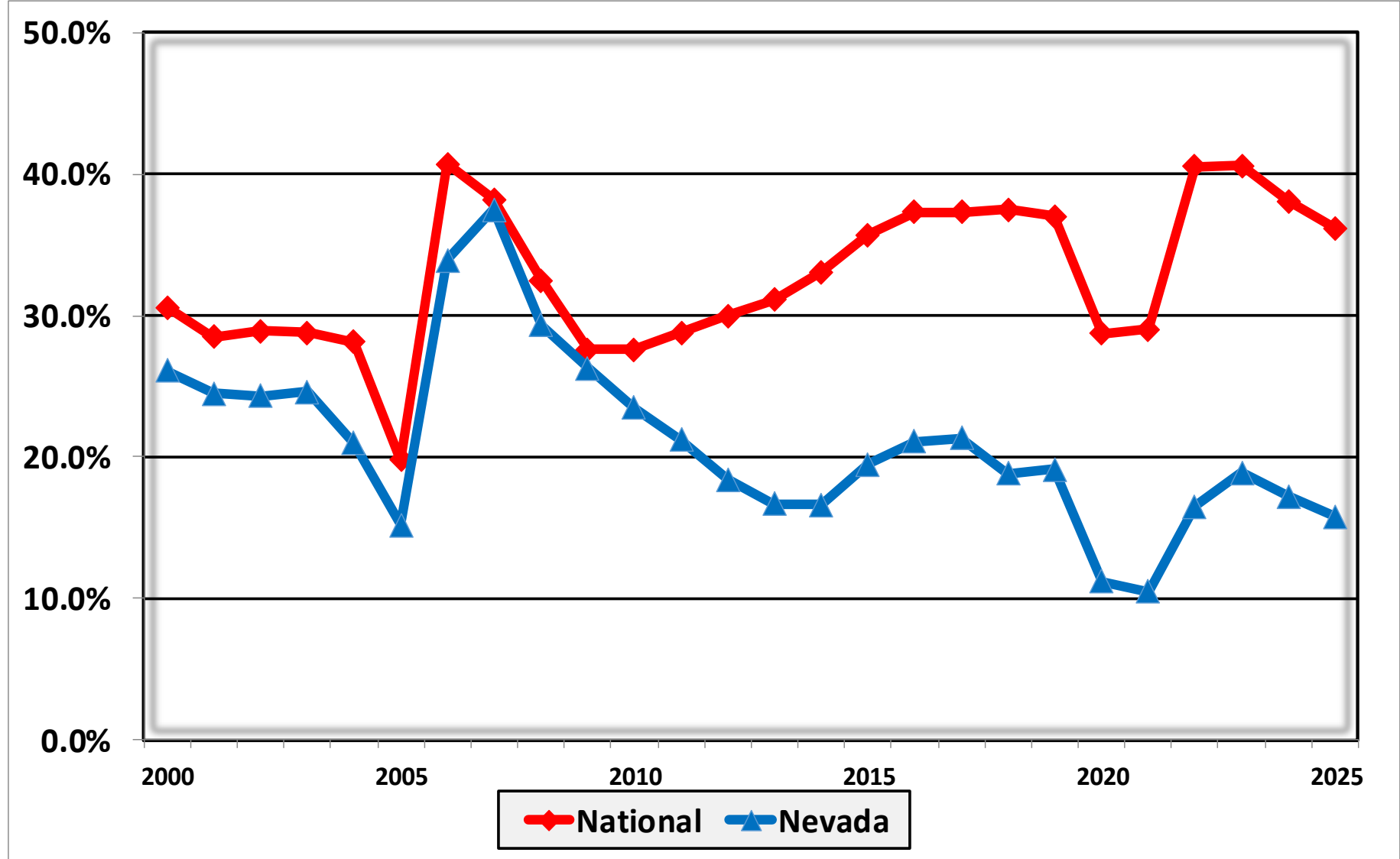
Bankruptcy Filing Trends in Nevada: 2000-2025



Prepared by the American Bankruptcy Institute
www.abi.org



Percent of Cases Filed as Chapter 13 Calendar Years 2000 - 2025



Bankruptcy Filing Trends in Nevada: 2000-2025

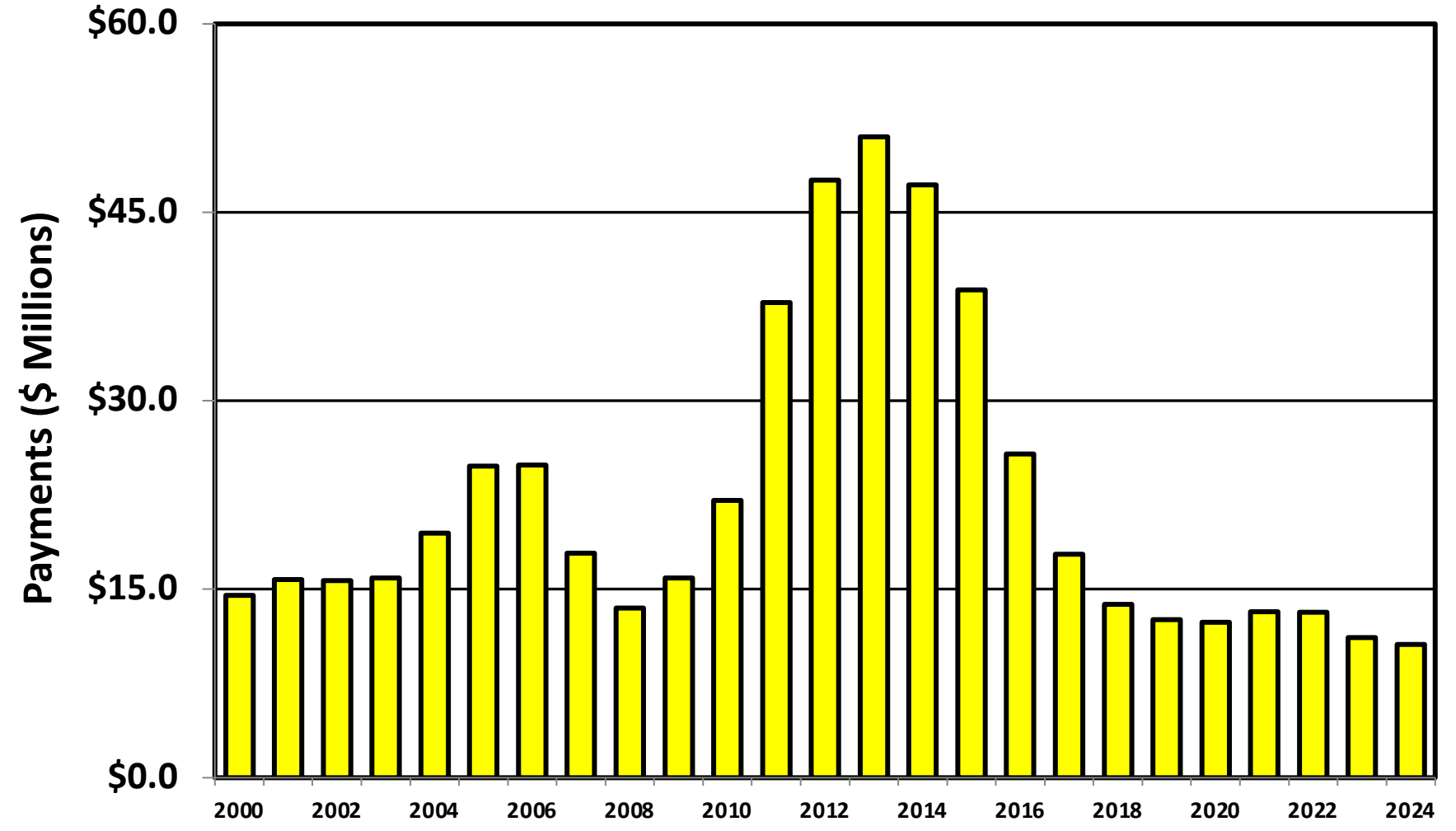


Prepared by the American Bankruptcy Institute
www.abi.org



AMERICAN BANKRUPTCY INSTITUTE

Chapter 13 Cases in Nevada Amount (in Millions) Paid to Unsecured Creditors Fiscal Years 2000 - 2024



Source: Executive Office for United States Trustees

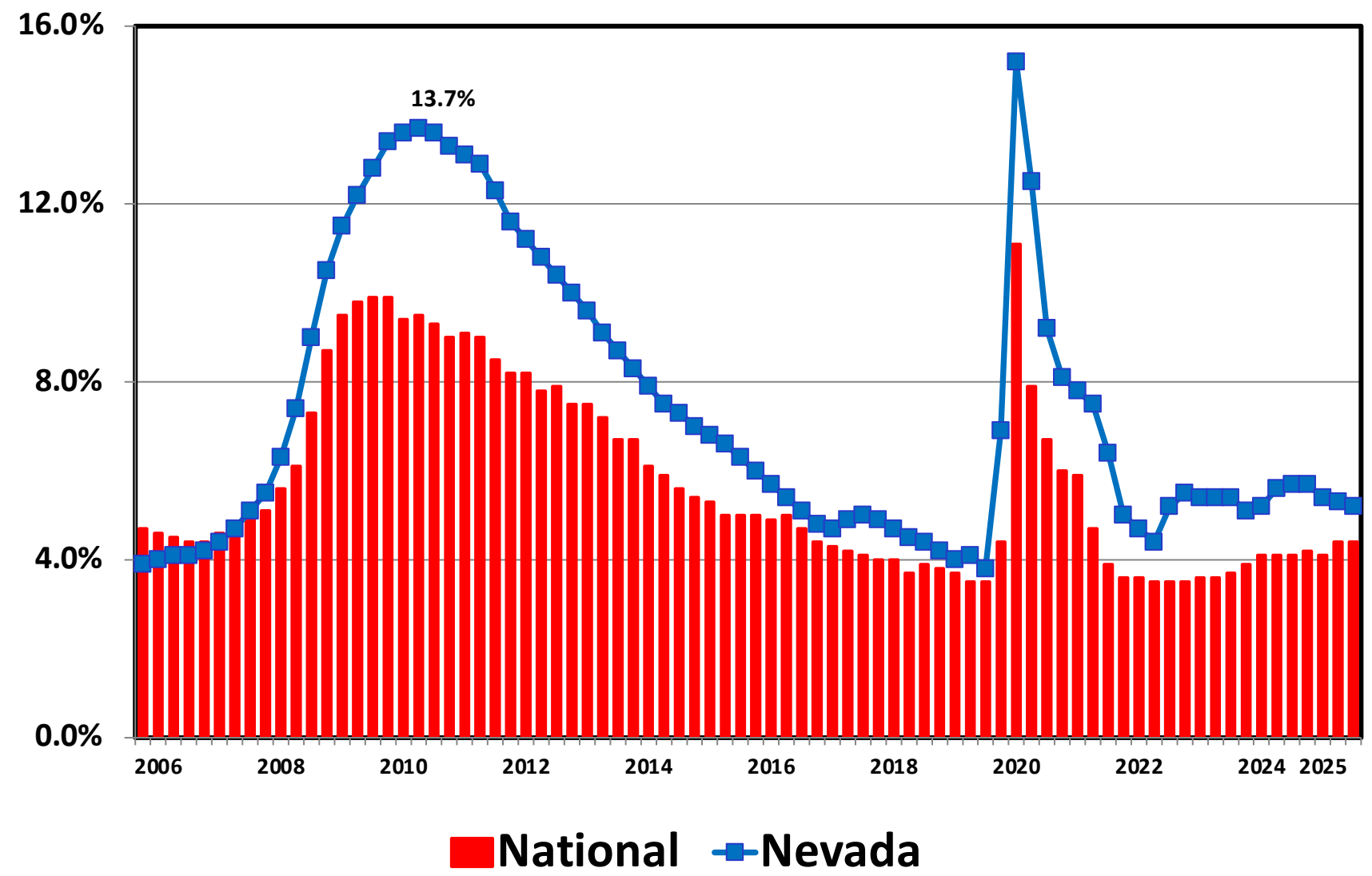
Bankruptcy Filing Trends in Nevada: 2000-2025



Prepared by the American Bankruptcy Institute
www.abi.org



Unemployment Rate By Quarter 2006 - 2025



Source: Bureau of Labor Statistics

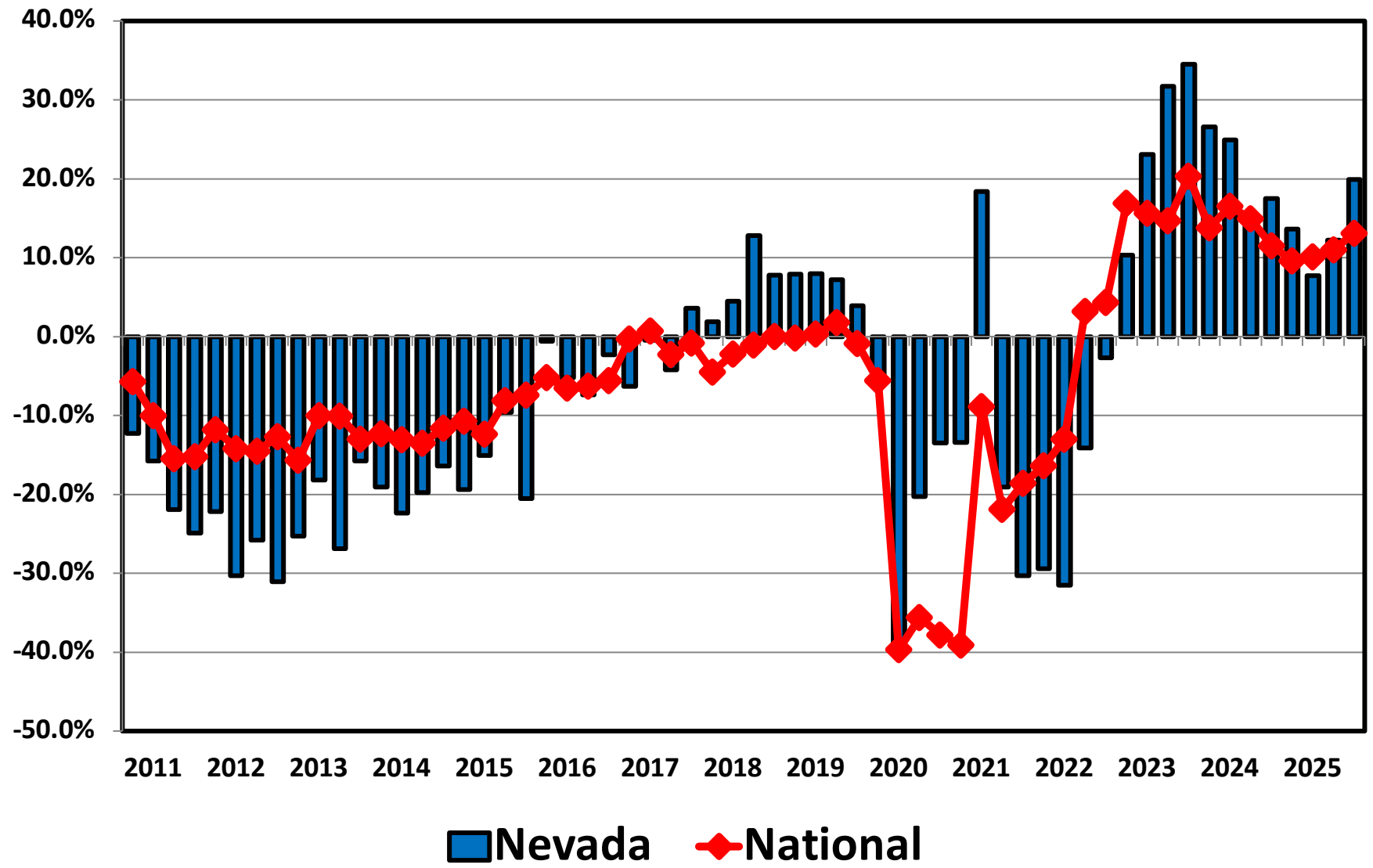
Bankruptcy Filing Trends in Nevada: 2000-2025



Prepared by the American Bankruptcy Institute
www.abi.org



Filing Trends By Quarter Nevada vs. National Average (Percent Change From Same Quarter One Year Prior)



Bankruptcy Filing Trends in Nevada: 2000-2025

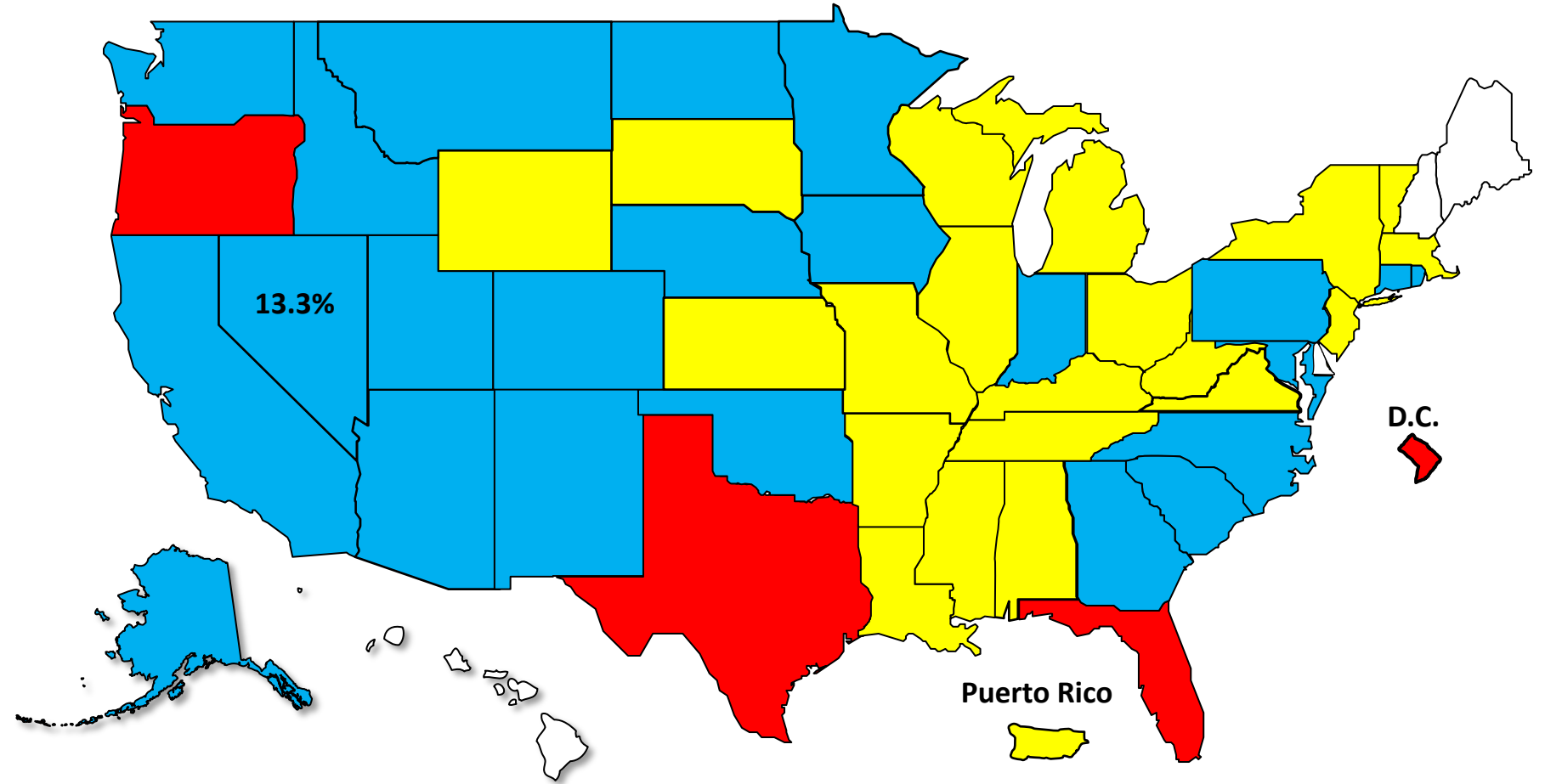


Prepared by the American Bankruptcy Institute
www.abi.org



Bankruptcy Filing Trends Calendar Year 2025 vs. 2024 National Average = 11.0% Increase

+20% or More +10.0% to 19.9% +0% to 9.9% Decline



Bankruptcy Filing Trends in Nevada: 2000-2025

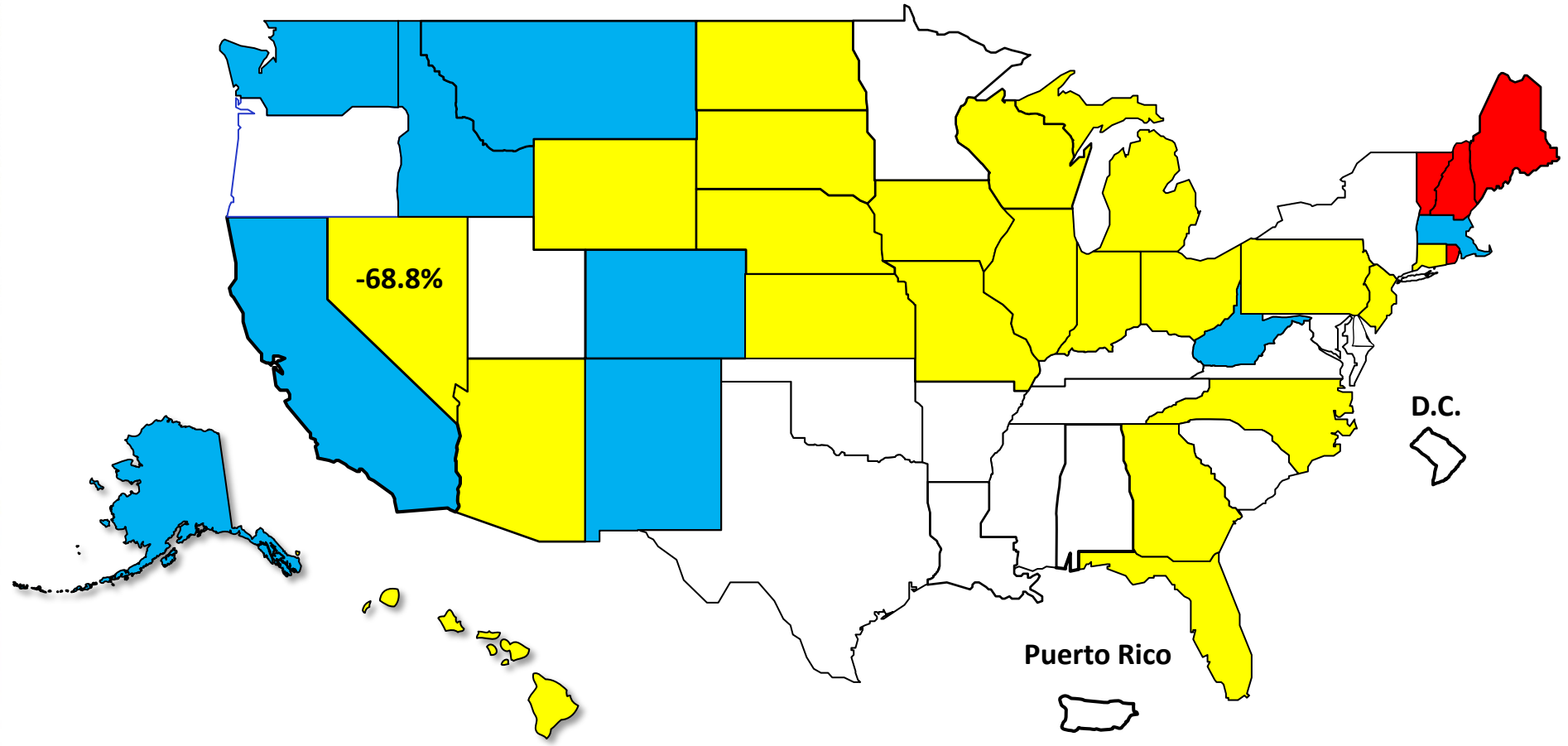


Prepared by the American Bankruptcy Institute
www.abi.org



Percent Change in Total Filings Calendar Year 2025 Compared to 2010 (National Average = 63.9% Decrease)

Amount of Decrease





AMERICAN BANKRUPTCY INSTITUTE

Prepared by the American Bankruptcy Institute. www.abi.org