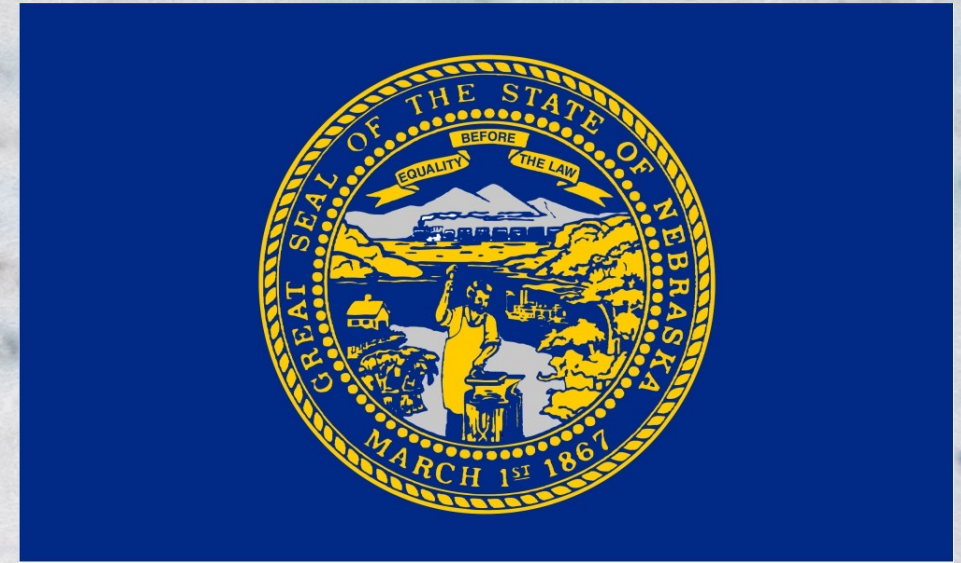


Bankruptcy Filing Trends in Nebraska: 2000-2025



Prepared by the American Bankruptcy Institute. www.abi.org



AMERICAN
BANKRUPTCY
INSTITUTE

Bankruptcy Filing Trends in Nebraska: 2000-2025



Prepared by the American Bankruptcy Institute
www.abi.org



Nebraska



State at a Glance		
	Nebraska	National
Population (7/1/2025)	2,018,006	341,784,857
- Change since April 2020	2.9%	3.1%
- Foreign Born	8.0%	14.1%
Size (Square Miles)	76,818	3,533,038
Median Household Income	\$76,475	\$80,734
Persons per Household	2.42	2.53
Per Capita Income	\$41,751	\$44,673
Median Home Value	\$238,600	\$332,700
Homeownership Rate	66.5%	65.2%
High School Graduate (or Higher)	92.2%	89.6%
College Graduate (or Higher)	34.6%	35.7%
Disabled	8.5%	9.3%
No Health Insurance	8.4%	9.6%
In Poverty	10.9%	10.6%
Source: U.S. Census Bureau January 2026		

Bankruptcy Filing Trends in Nebraska: 2000-2025



Prepared by the American
Bankruptcy Institute
www.abi.org



AMERICAN
BANKRUPTCY
INSTITUTE

Bankruptcy Filings in Nebraska Calendar Years 2000 - 2025					
Year	Total	Chapter 7	Chapter 11	Chapter 13	Other Cases*
2025	2,796	1,823	13	943	17
2024	2,533	1,672	21	824	16
2023	2,359	1,535	16	799	9
2022	2,150	1,393	20	728	9
2021	2,589	1,902	15	654	18
2020	3,343	2,494	12	802	35
2019	4,126	2,871	42	1,170	43
2018	4,043	2,759	26	1,231	27
2017	3,998	2,657	20	1,300	21
2016	4,104	2,665	16	1,408	15
2015	4,259	2,858	9	1,384	8
2014	4,635	3,153	12	1,457	13
2013	5,169	3,556	29	1,572	12
2012	5,815	4,063	24	1,720	8
2011	6,603	4,678	31	1,878	16
2010	7,943	5,766	75	2,071	31
2009	7,557	5,495	41	1,996	25
2008	6,708	4,712	27	1,952	17
2007	5,364	3,773	19	1,561	11
2006	4,141	2,782	29	1,307	23
2005	12,113	9,979	31	2,070	33
2004	8,992	7,049	43	1,898	2
2003	8,625	6,638	30	1,901	56
2002	7,721	5,985	58	1,653	25
2001	7,202	6,015	46	1,114	27
2000	5,629	4,707	34	858	30
*Chapters 9, 12 and 15					

Bankruptcy Filing Trends in Nebraska: 2000-2025



Prepared by the American
Bankruptcy Institute
www.abi.org



AMERICAN
BANKRUPTCY
INSTITUTE

Business Bankruptcy Cases Filed - Nebraska					
Years Ended December 31, 2000 - 2025					
CALENDAR YEAR	TOTAL FILINGS	CHAPTER 7	CHAPTER 11	CHAPTER 13	OTHER CASES*
2025	97	58	13	9	17
2024	104	53	21	14	16
2023	69	32	15	13	9
2022	72	36	20	7	9
2021	70	32	15	5	18
2020	121	70	12	4	35
2019	143	58	36	6	43
2018	113	51	26	9	27
2017	116	66	18	11	21
2016	107	62	14	16	15
2015	95	63	7	17	8
2014	117	83	11	10	13
2013	153	101	28	12	12
2012	166	113	22	23	8
2011	225	162	31	16	16
2010	315	184	72	28	31
2009	318	224	37	32	25
2008	259	180	25	37	17
2007	208	161	17	19	11
2006	182	112	25	22	23
2005	296	214	28	21	33
2004	207	134	36	35	2
2003	238	126	25	31	56
2002	152	62	50	15	25
2001	144	61	45	11	27
2000	115	44	32	9	30
* Chapters 9, 12 and 15					

Bankruptcy Filing Trends in Nebraska: 2000-2025

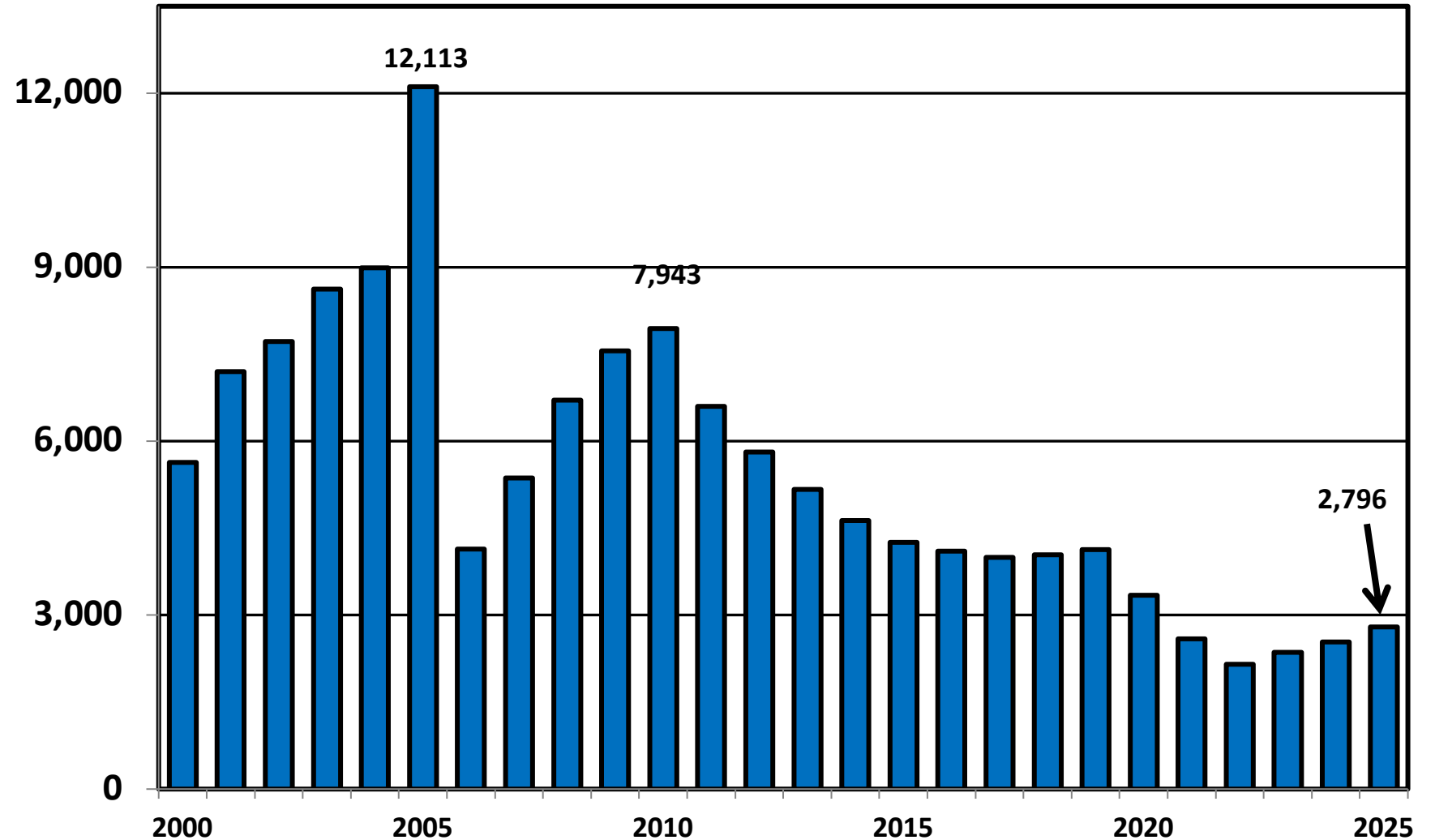


Prepared by the American
Bankruptcy Institute
www.abi.org



AMERICAN
BANKRUPTCY
INSTITUTE

District of Nebraska Total Bankruptcy Cases Filed 2000 - 2025



Bankruptcy Filing Trends in Nebraska: 2000-2025

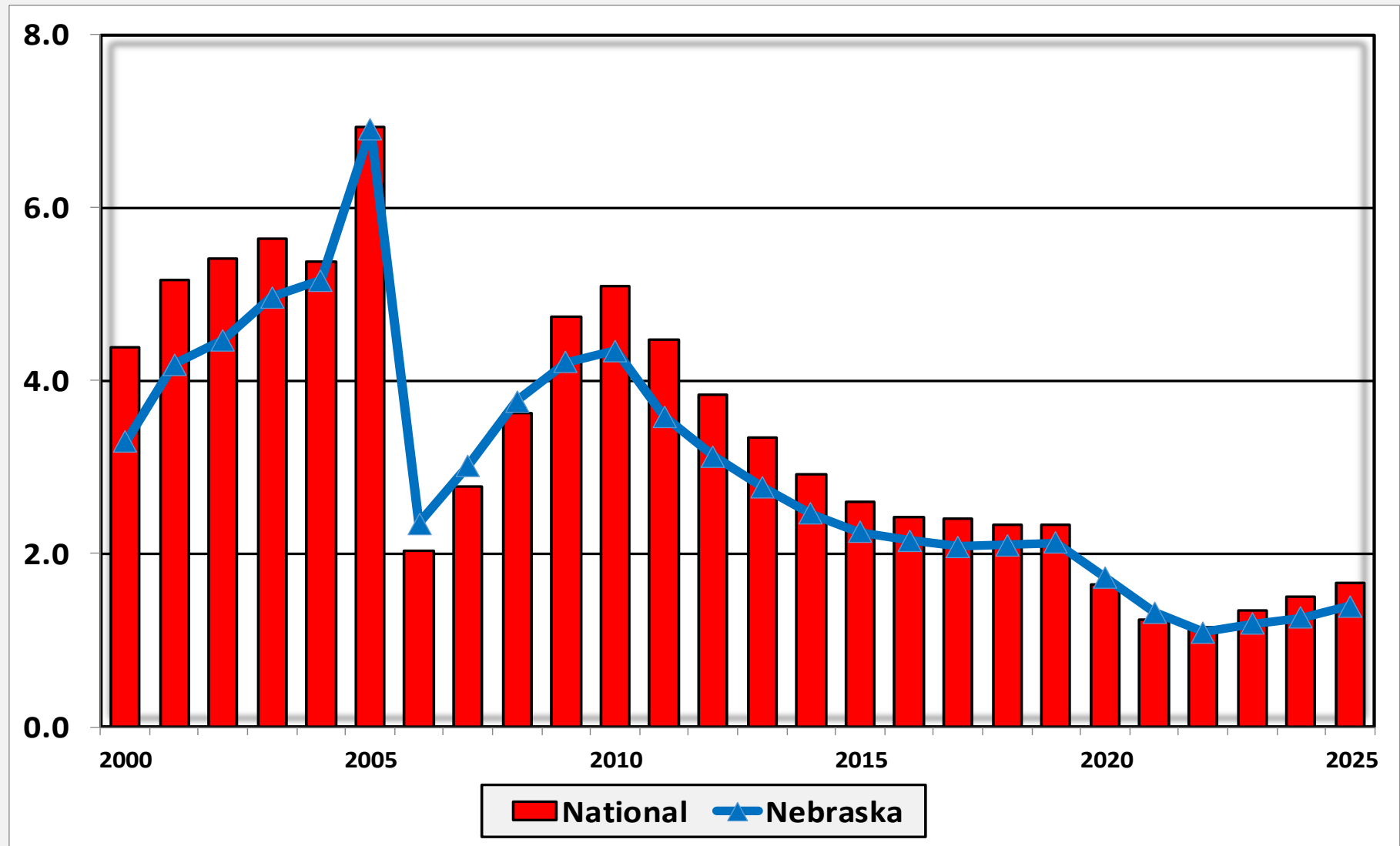


Prepared by the American
Bankruptcy Institute
www.abi.org



AMERICAN
BANKRUPTCY
INSTITUTE

Bankruptcy Filings per 1,000 Population Nebraska vs. National Average 2000 - 2025



Bankruptcy Filing Trends in Nebraska: 2000-2025

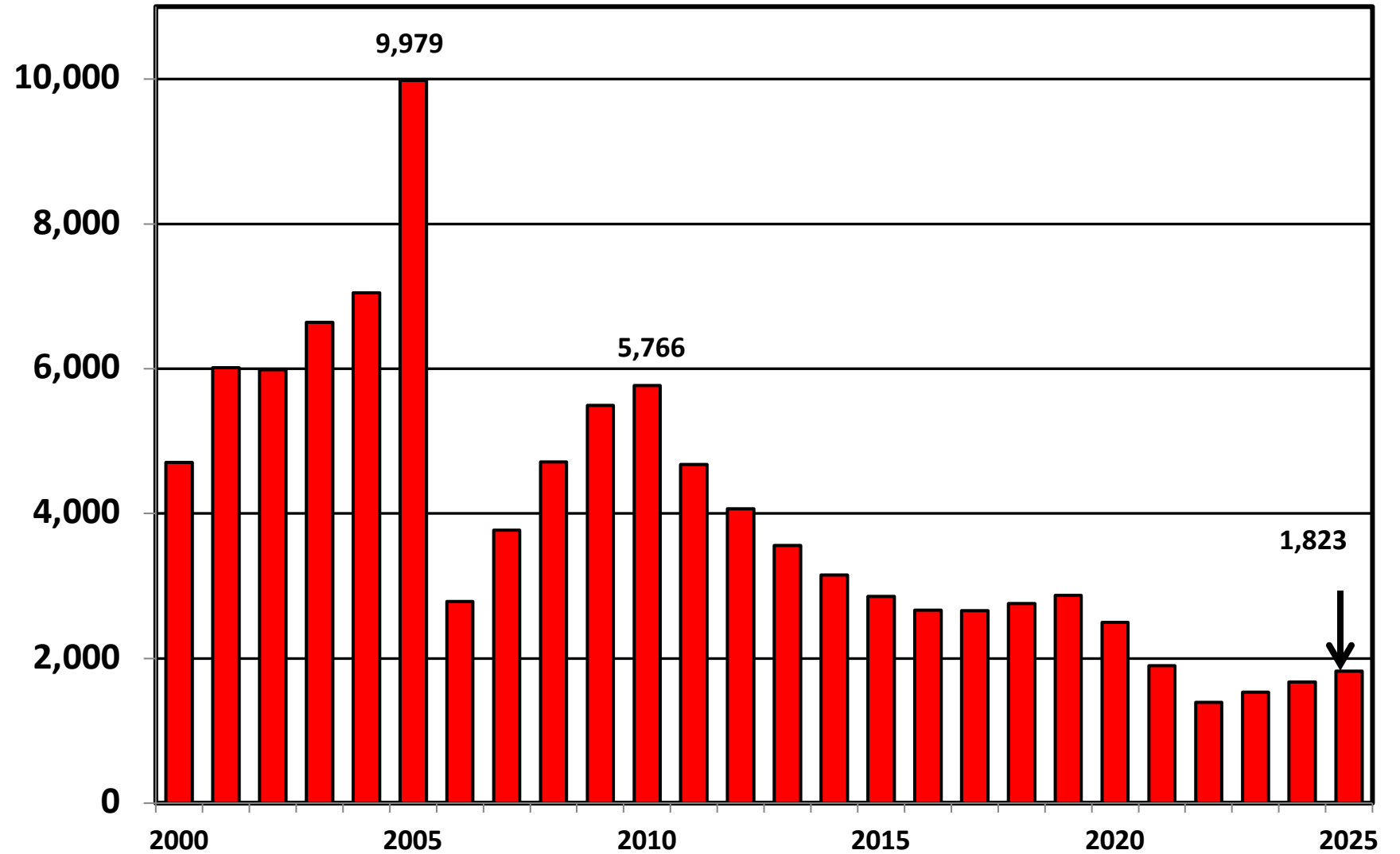


Prepared by the American
Bankruptcy Institute
www.abi.org

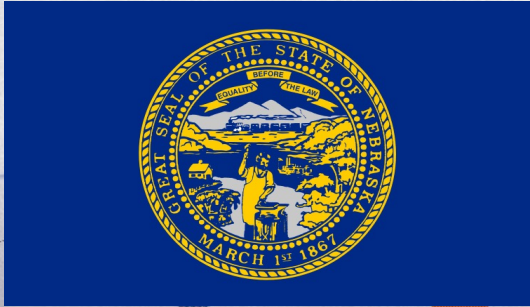


AMERICAN
BANKRUPTCY
INSTITUTE

District of Nebraska Chapter 7 Cases Filed 2000 - 2025



Bankruptcy Filing Trends in Nebraska: 2000-2025

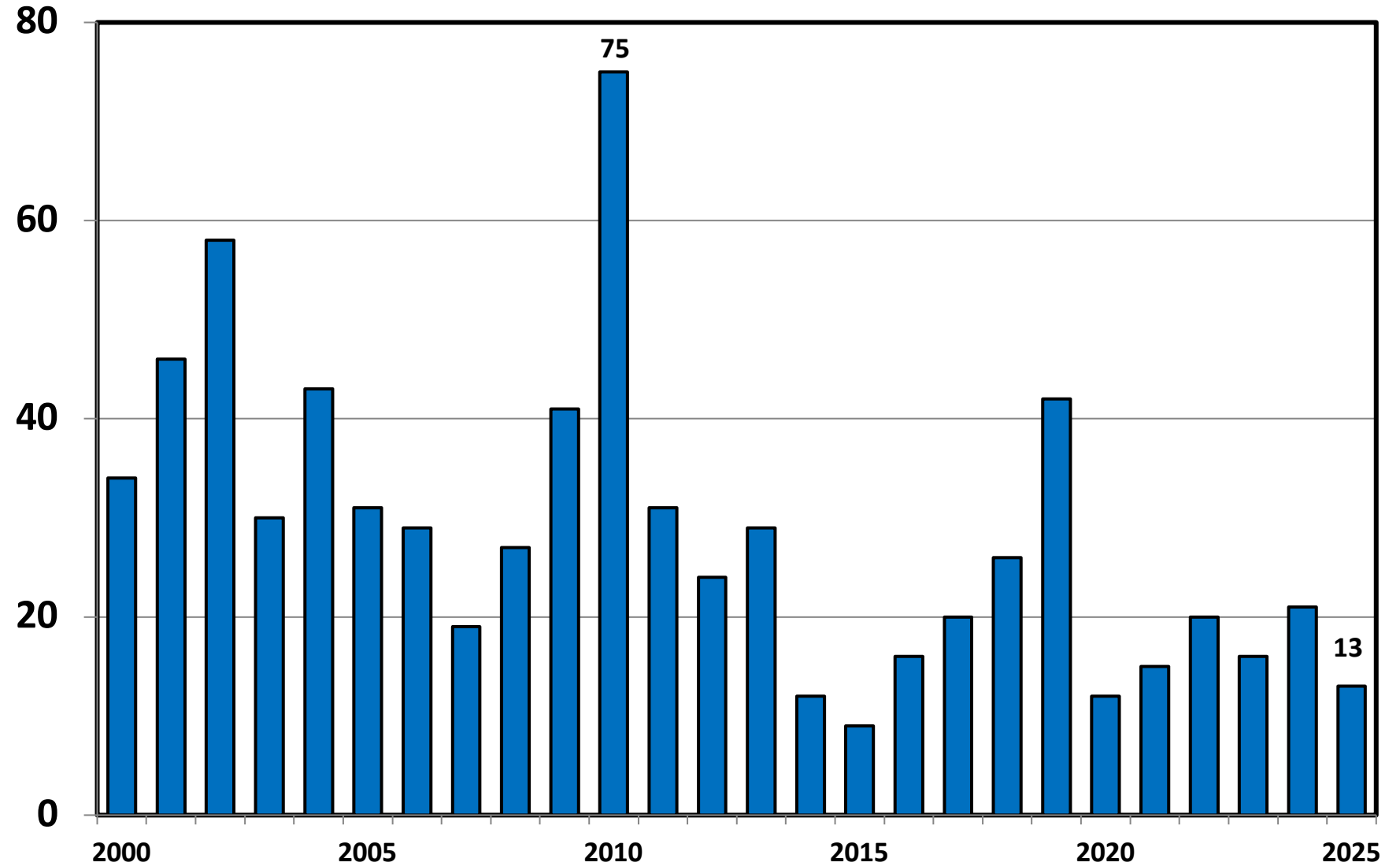


Prepared by the American
Bankruptcy Institute
www.abi.org



AMERICAN
BANKRUPTCY
INSTITUTE

Chapter 11 Cases Filed in Nebraska 2000 - 2025



Bankruptcy Filing Trends in Nebraska: 2000-2025

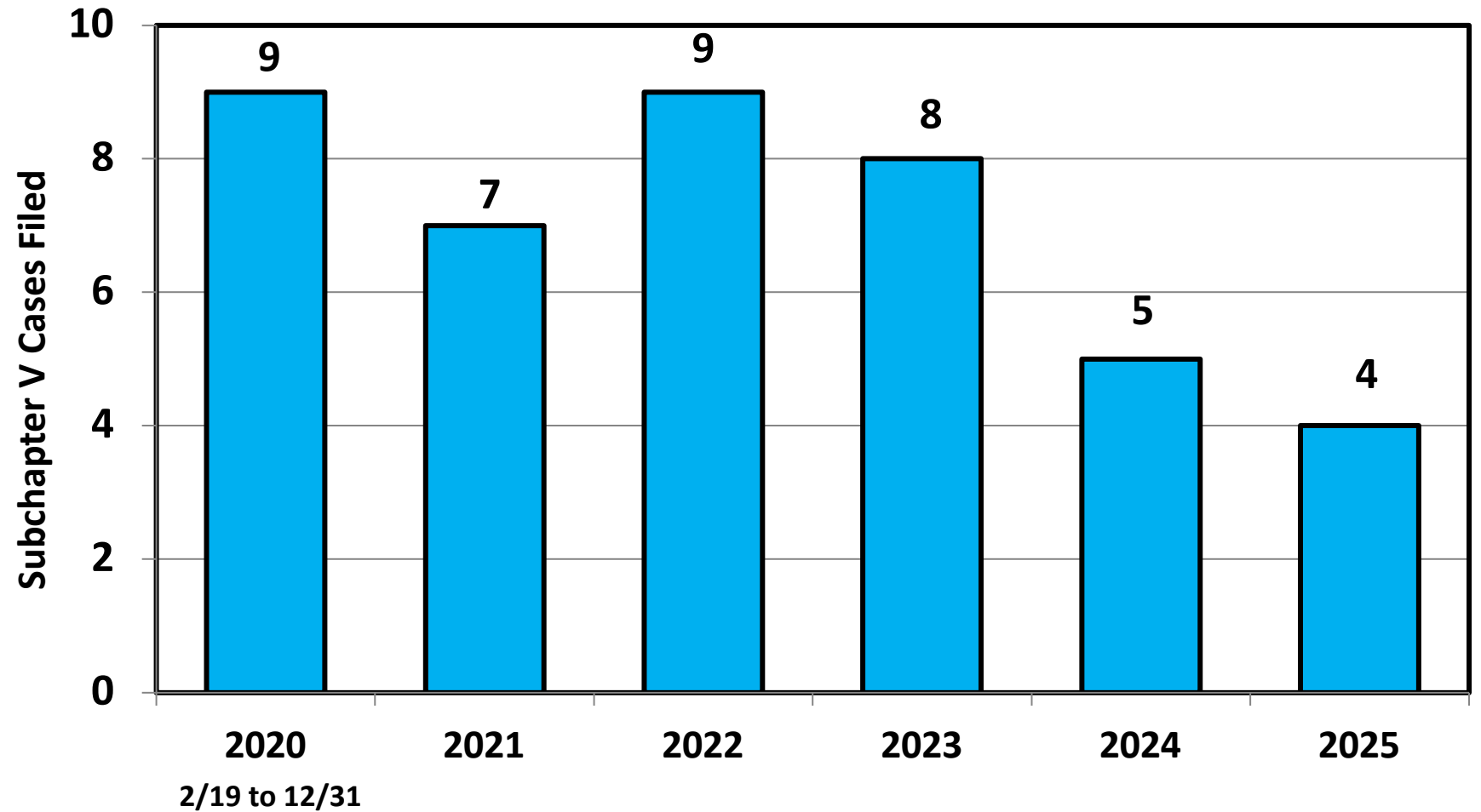


Prepared by the American
Bankruptcy Institute
www.abi.org



AMERICAN
BANKRUPTCY
INSTITUTE

Subchapter V Cases Filed in Nebraska Calendar Years 2020 - 2025



Source: ABI review of PACER records

Bankruptcy Filing Trends in Nebraska: 2000-2025

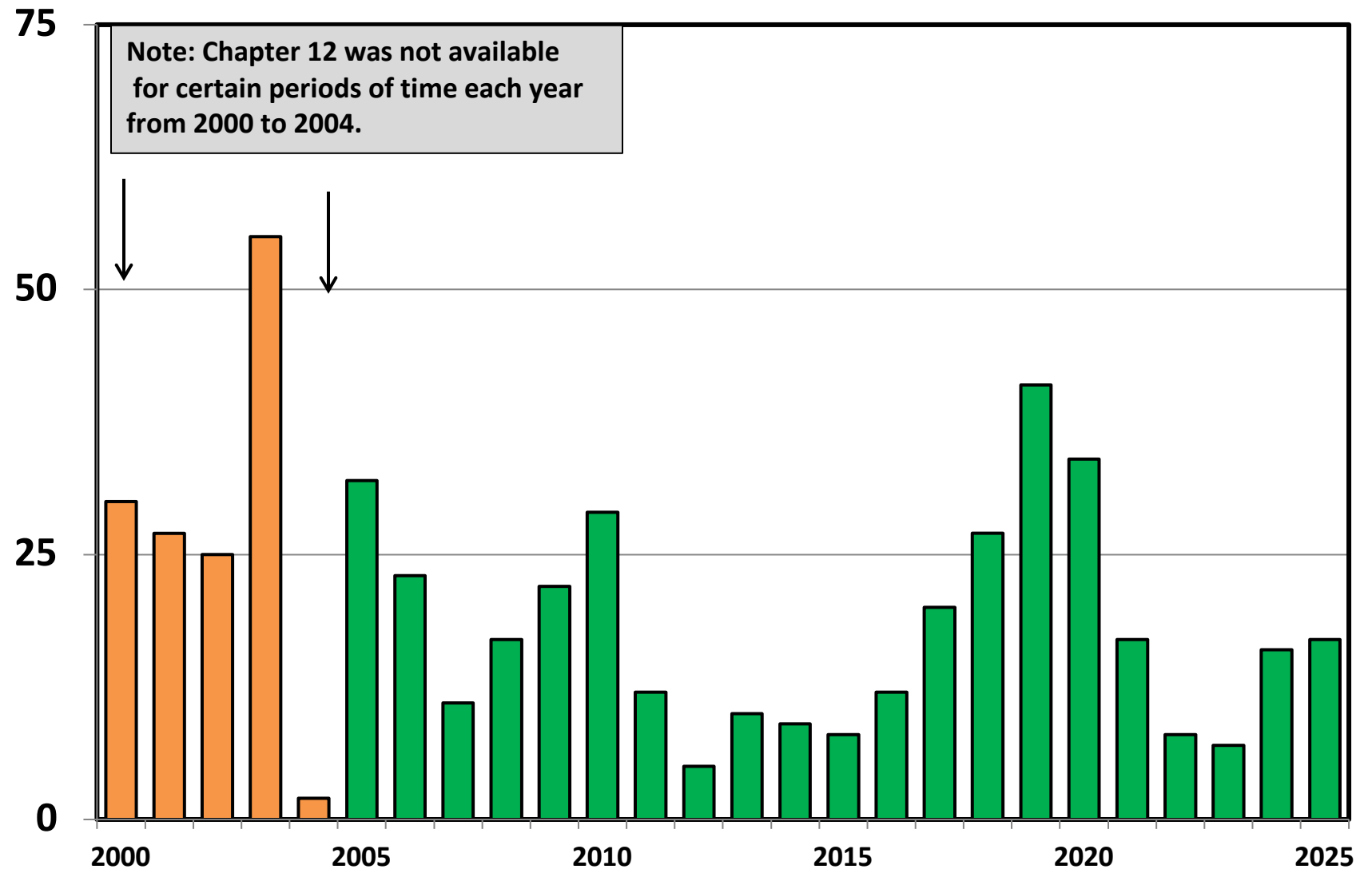


Prepared by the American
Bankruptcy Institute
www.abi.org



AMERICAN
BANKRUPTCY
INSTITUTE

Chapter 12 Cases Filed in Nebraska 2000 - 2025



Bankruptcy Filing Trends in Nebraska: 2000-2025

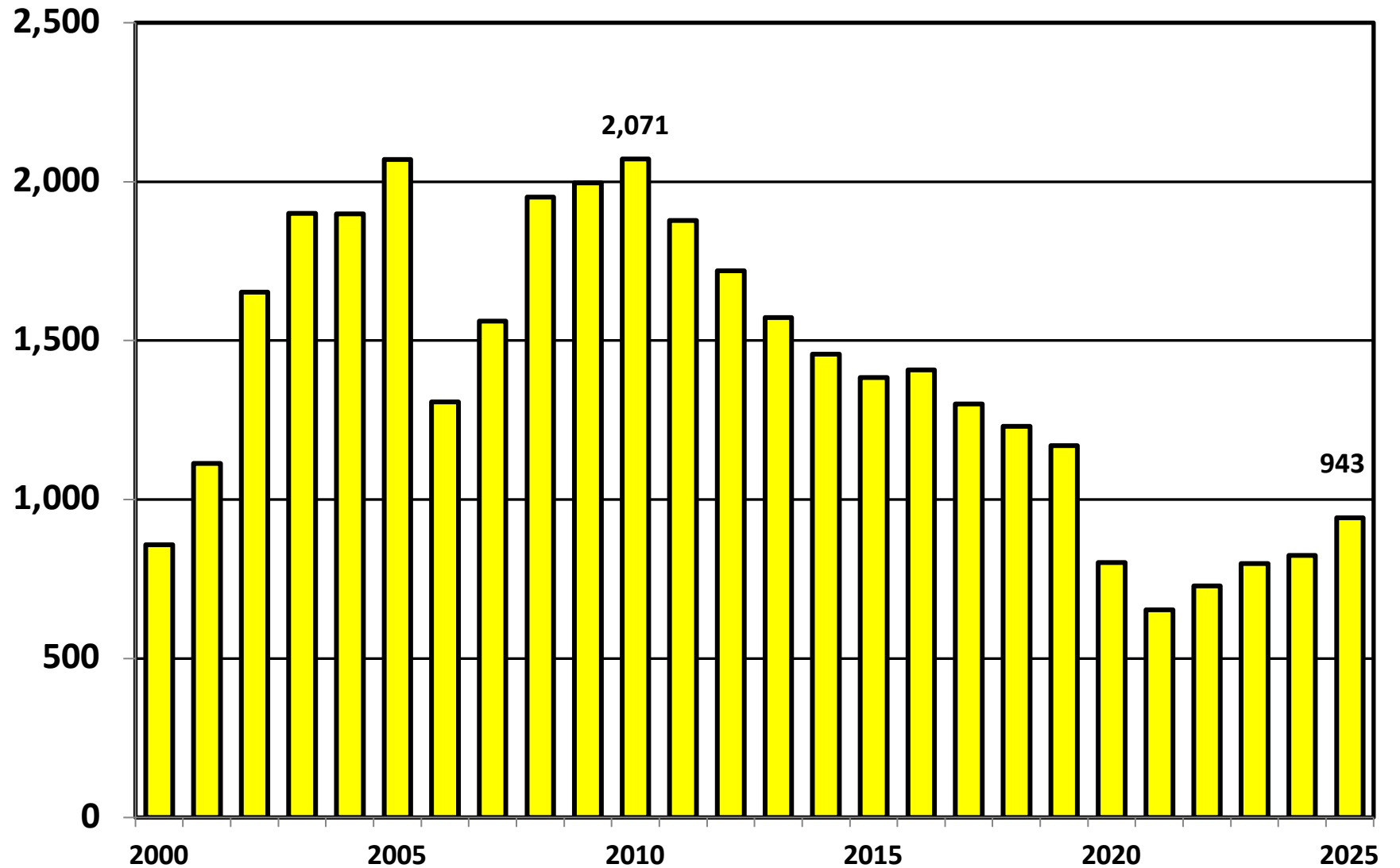


Prepared by the American
Bankruptcy Institute
www.abi.org



AMERICAN
BANKRUPTCY
INSTITUTE

District of Nebraska Chapter 13 Cases Filed 2000 - 2025



Bankruptcy Filing Trends in Nebraska: 2000-2025

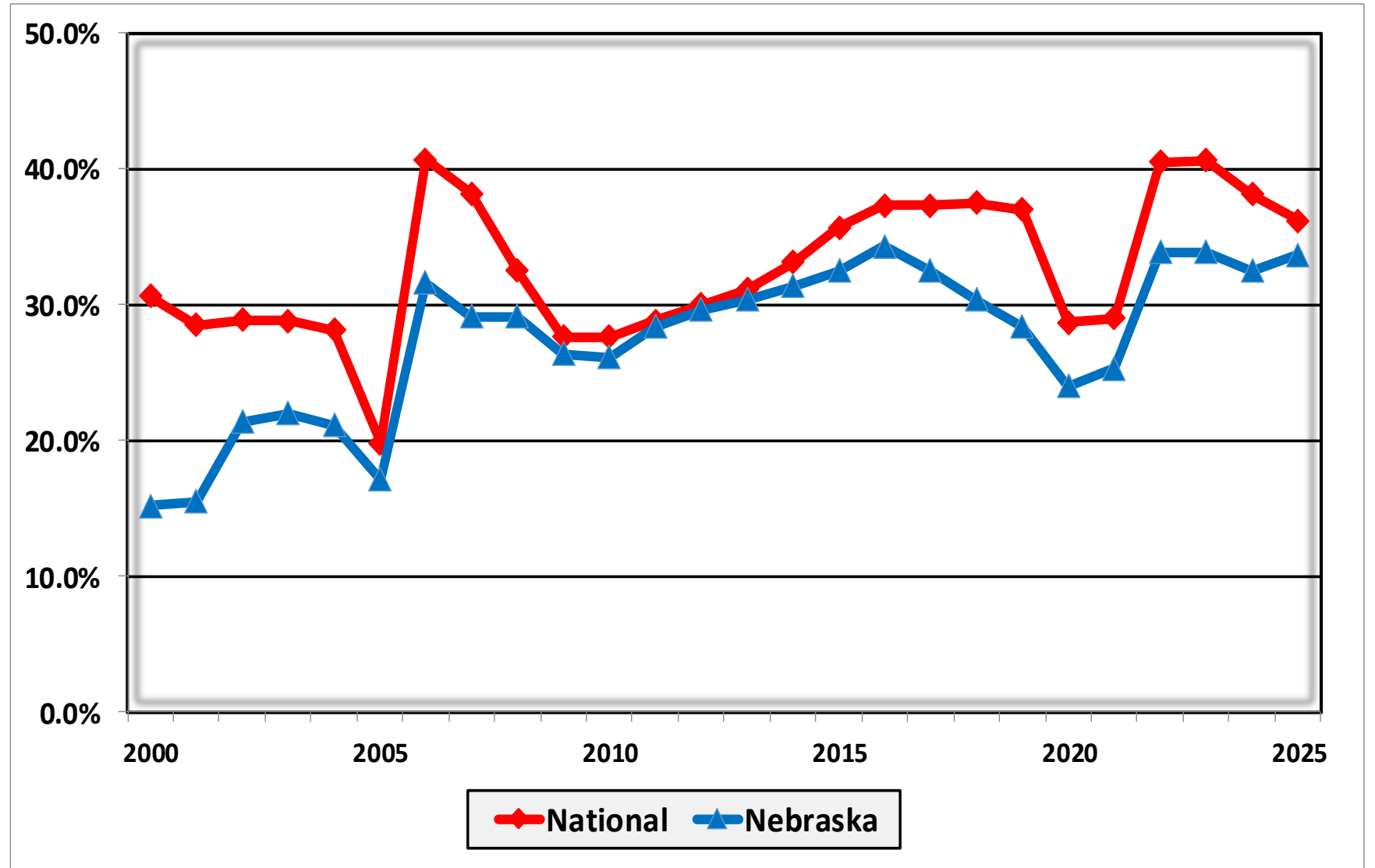


Prepared by the American
Bankruptcy Institute
www.abi.org



AMERICAN
BANKRUPTCY
INSTITUTE

Percent of Cases Filed as Chapter 13 Calendar Years 2000 - 2025



Bankruptcy Filing Trends in Nebraska: 2000-2025



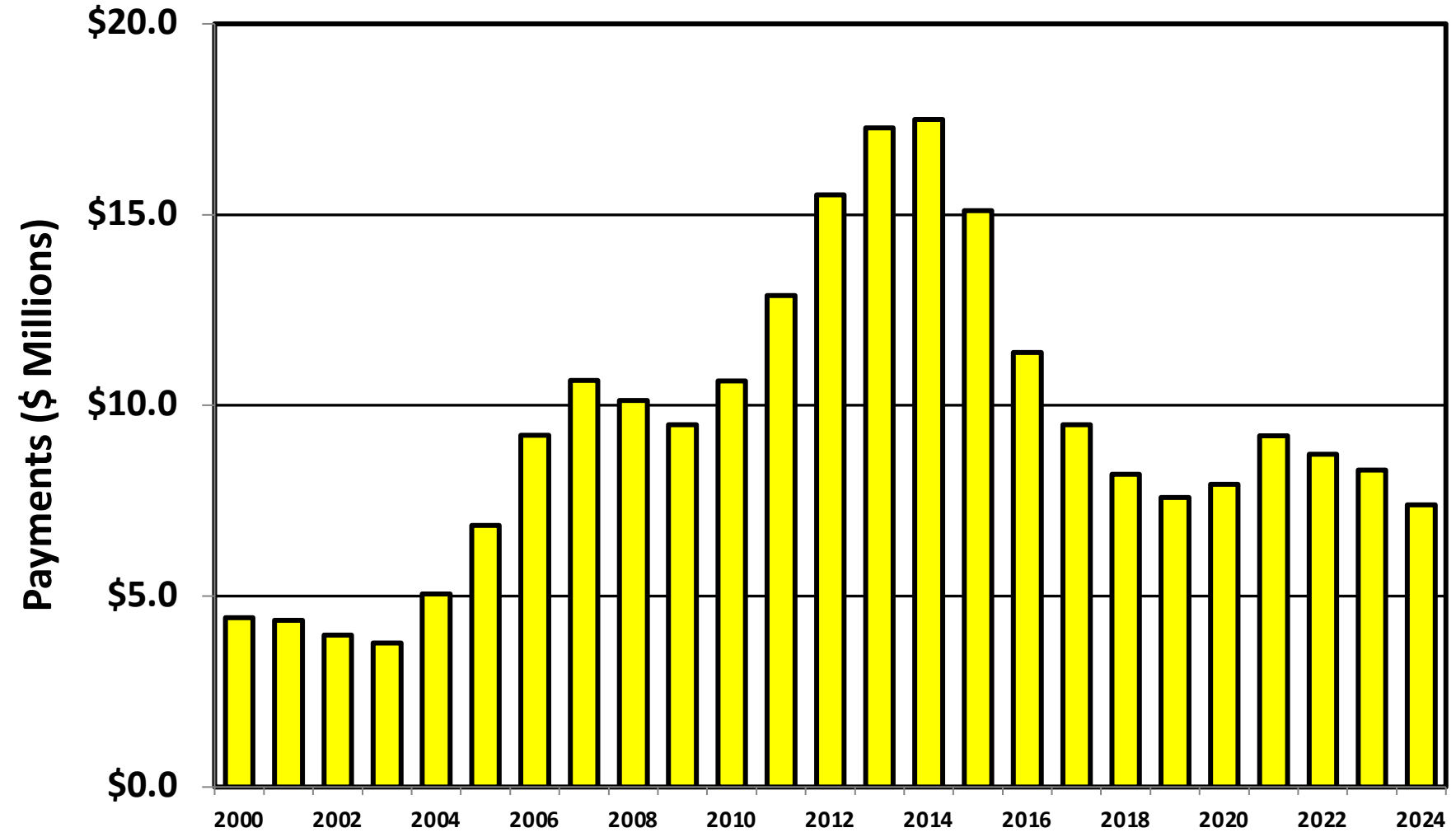
Prepared by the American
Bankruptcy Institute
www.abi.org



AMERICAN
BANKRUPTCY
INSTITUTE

Chapter 13 Cases in Nebraska

Amount (in Millions) Paid to Unsecured Creditors
Fiscal Years 2000 - 2024



Source: Executive Office for United States Trustees

Bankruptcy Filing Trends in Nebraska: 2000-2025

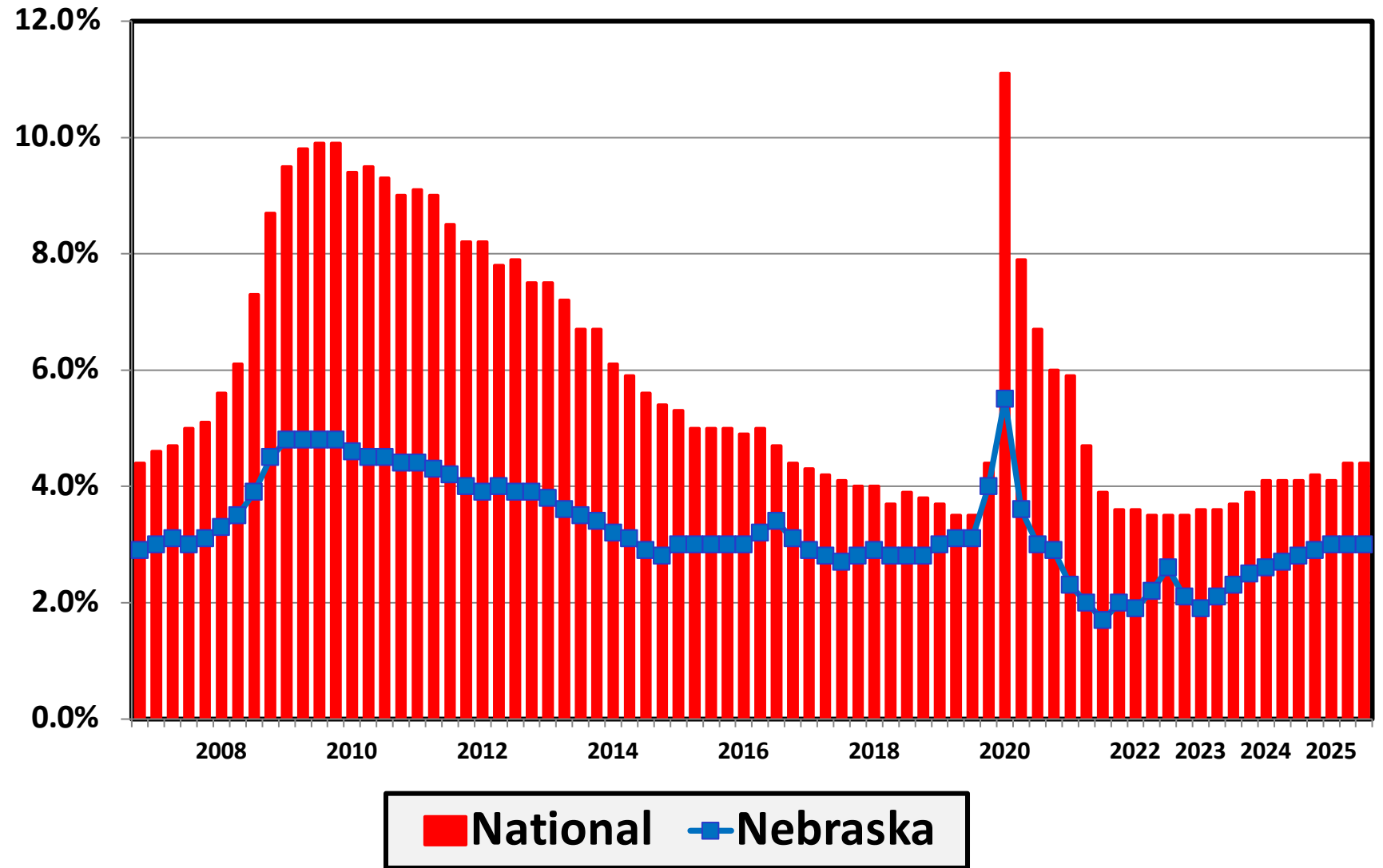


Prepared by the American
Bankruptcy Institute
www.abi.org



AMERICAN
BANKRUPTCY
INSTITUTE

Unemployment Rate By Quarter 2006 - 2025



Source: Bureau of Labor Statistics

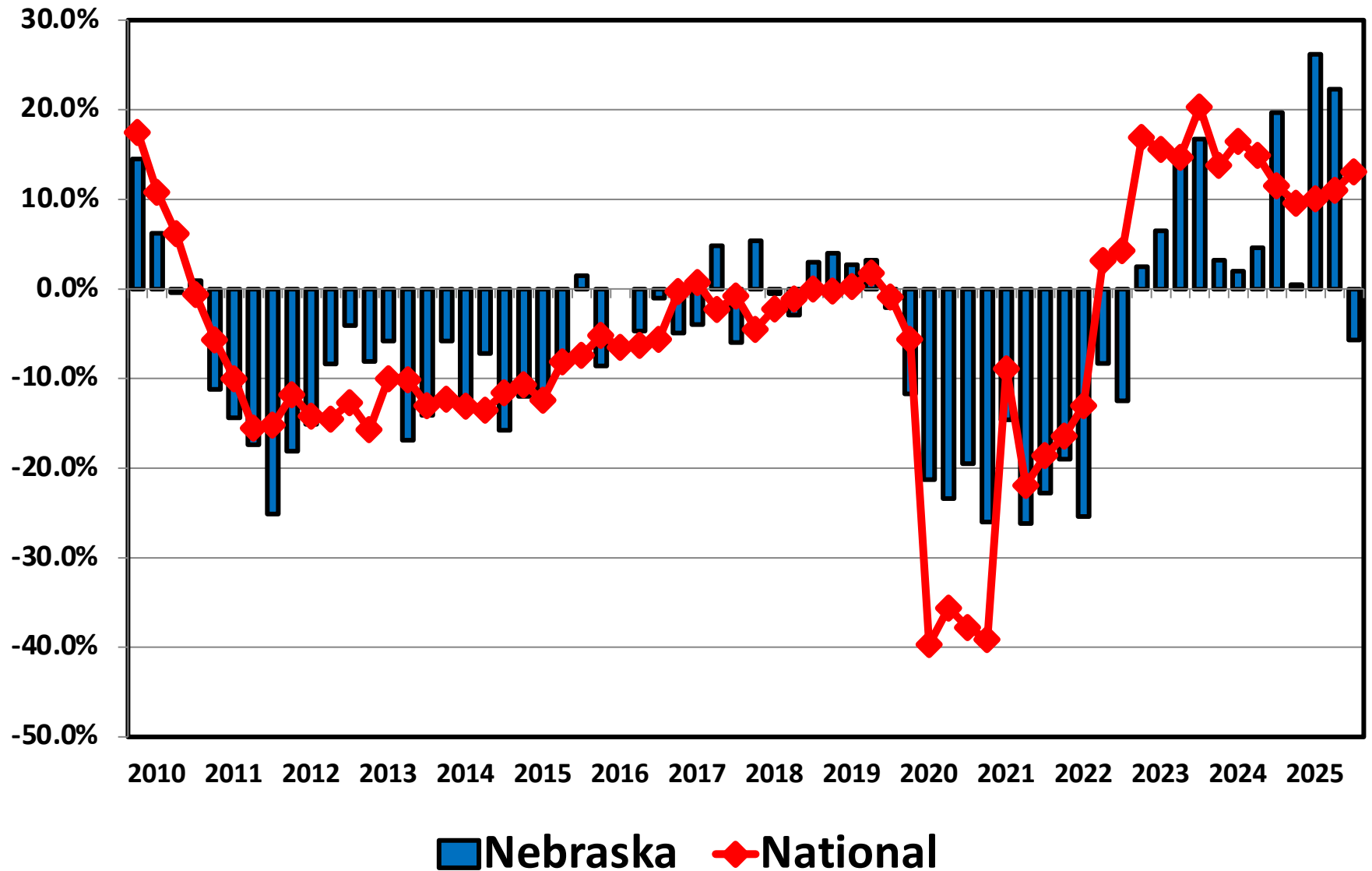
Bankruptcy Filing Trends in Nebraska: 2000-2025



Prepared by the American Bankruptcy Institute
www.abi.org



Filing Trends By Quarter Nebraska vs. National Average (Percent Change From Same Quarter One Year Prior)



Bankruptcy Filing Trends in Nebraska: 2000-2025



Prepared by the American
Bankruptcy Institute
www.abi.org



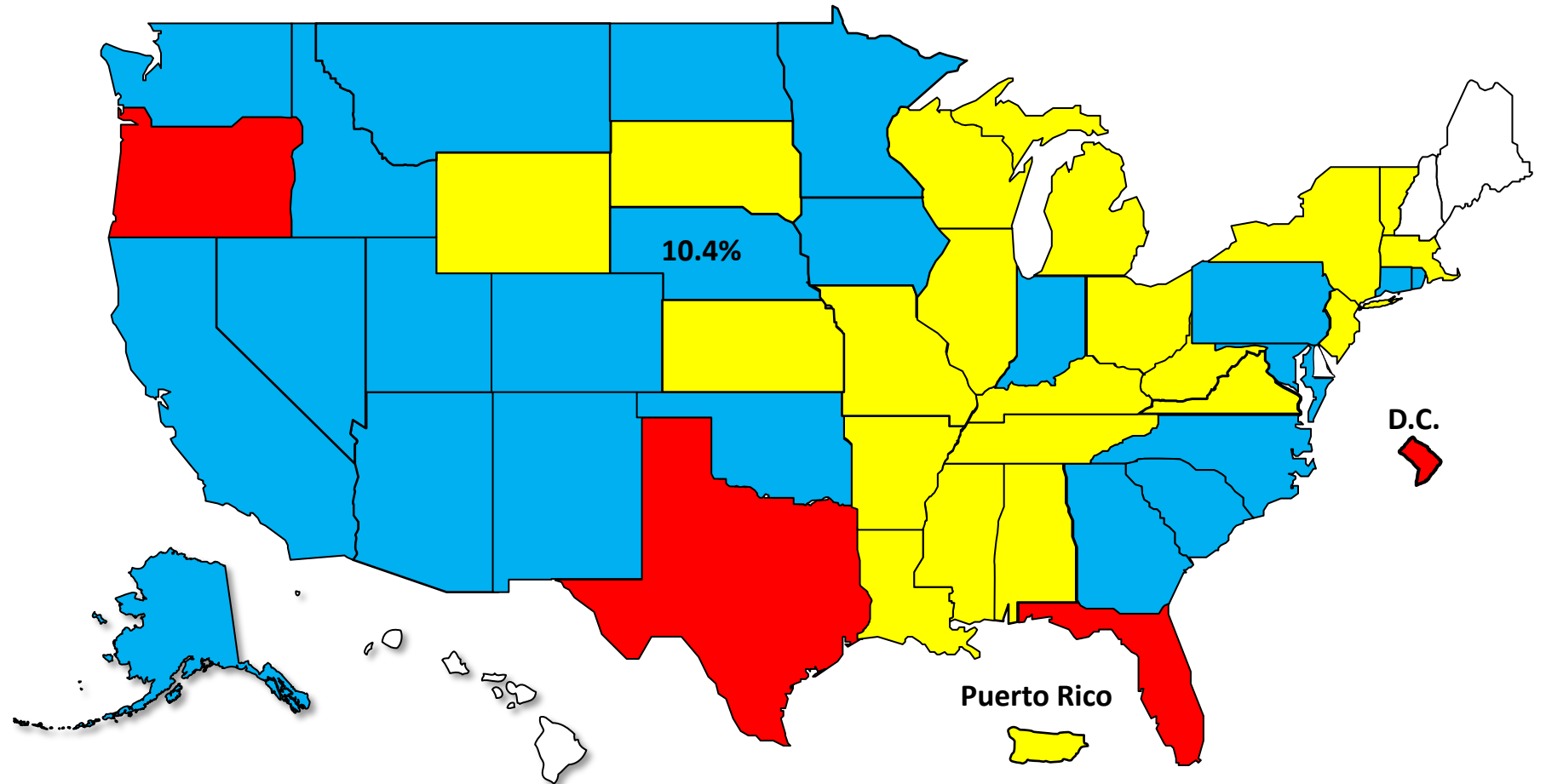
AMERICAN
BANKRUPTCY
INSTITUTE

Bankruptcy Filing Trends

Calendar Year 2025 vs. 2024

National Average = 11.0% Increase

■ +20% or More ■ +10.0% to 19.9% ■ +0% to 9.9% Decline



Bankruptcy Filing Trends in Nebraska: 2000-2025

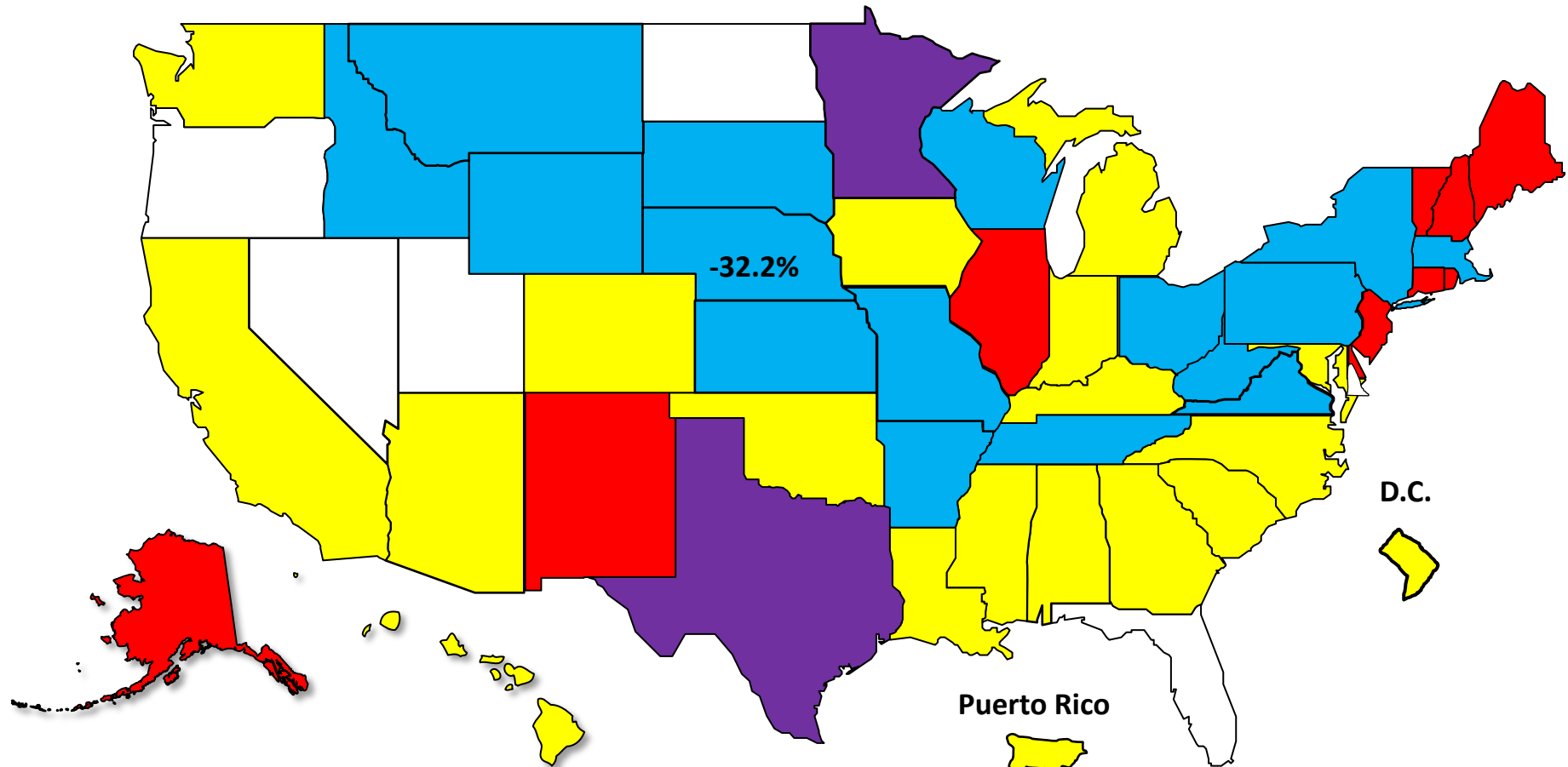
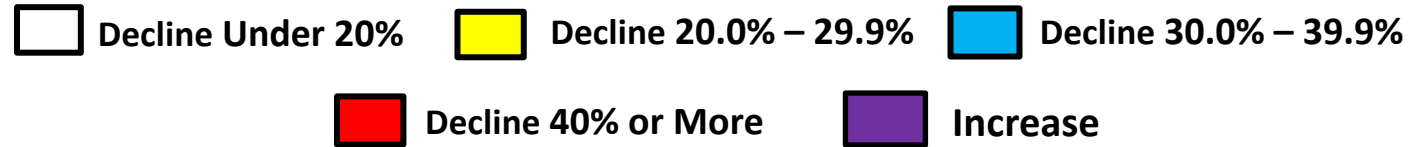


Prepared by the American Bankruptcy Institute
www.abi.org



Bankruptcy Filing Trends Since the Pandemic Calendar Year 2025 vs. 2019

National Average = 25.9% Decrease



Bankruptcy Filing Trends in Nebraska: 2000-2025



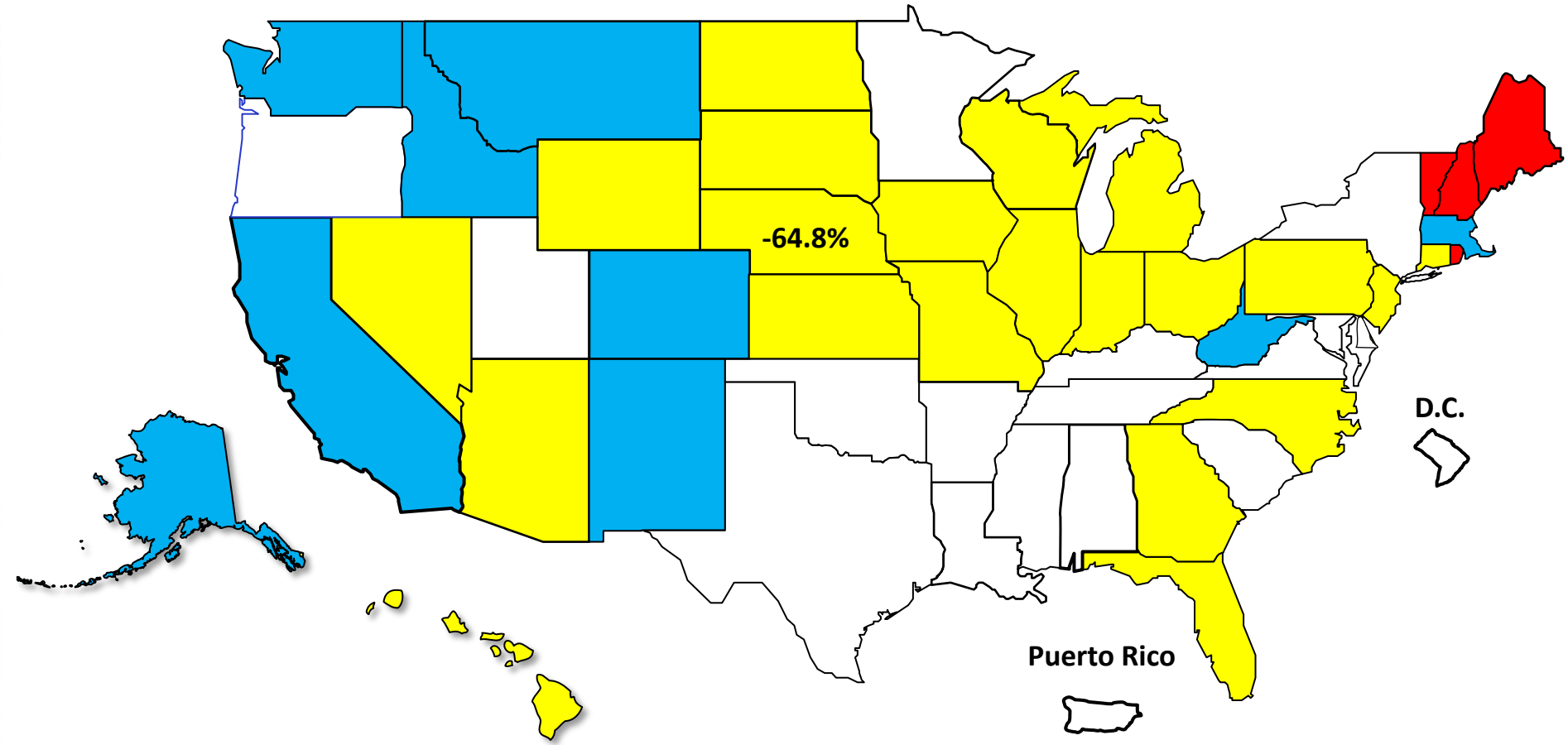
Prepared by the American
Bankruptcy Institute
www.abi.org



AMERICAN
BANKRUPTCY
INSTITUTE

Percent Change in Total Filings Calendar Year 2025 Compared to 2010 (National Average = 63.9% Decrease)

Amount of Decrease





AMERICAN BANKRUPTCY INSTITUTE

Prepared by the American Bankruptcy Institute. www.abi.org