

# Bankruptcy Filing Trends in Missouri: 2000-2025



Prepared by the American Bankruptcy Institute. [www.abi.org](http://www.abi.org)



AMERICAN  
BANKRUPTCY  
INSTITUTE

# Bankruptcy Filing Trends in Missouri: 2000-2025



Prepared by the American Bankruptcy Institute  
[www.abi.org](http://www.abi.org)



AMERICAN BANKRUPTCY INSTITUTE



# Missouri

State at a Glance		
	Missouri	National
Population (7/1/2025)	6,270,541	341,784,857
- Change since April 2020	1.9%	3.1%
- Foreign Born	4.5%	14.1%
Size (Square Miles)	68,746	3,533,038
Median Household Income	\$70,702	\$80,734
Persons per Household	2.40	2.53
Per Capita Income	\$39,695	\$44,673
Median Home Value	\$230,300	\$332,700
Homeownership Rate	68.1%	65.2%
High School Graduate (or Higher)	91.9%	89.6%
College Graduate (or Higher)	32.4%	35.7%
Disabled	10.7%	9.3%
No Health Insurance	9.4%	9.6%
In Poverty	12.3%	10.6%
Source: U.S. Census Bureau January 2026		

# Bankruptcy Filing Trends in Missouri: 2000-2025



Prepared by the American  
Bankruptcy Institute  
[www.abi.org](http://www.abi.org)



AMERICAN  
BANKRUPTCY  
INSTITUTE

Bankruptcy Filings in Missouri Calendar Years 2000 - 2025					
Year	Total	Chapter 7	Chapter 11	Chapter 13	Other Cases*
2025	10,613	5,942	71	4,584	16
2024	9,772	5,391	63	4,311	7
2023	9,482	4,970	35	4,471	6
2022	8,584	4,637	20	3,926	1
2021	9,737	6,378	36	3,317	6
2020	12,568	8,642	80	3,831	15
2019	17,054	10,720	76	6,249	9
2018	17,249	11,231	37	5,971	10
2017	18,140	11,938	85	6,110	7
2016	18,380	12,072	303	5,995	10
2015	19,195	13,066	50	6,075	4
2014	21,170	14,896	61	6,206	7
2013	23,963	17,120	74	6,763	6
2012	28,217	20,280	195	7,739	3
2011	29,083	21,198	114	7,763	8
2010	33,297	24,130	108	9,036	23
2009	31,303	23,363	116	7,813	11
2008	25,396	17,680	82	7,626	8
2007	21,257	14,123	61	7,066	7
2006	15,707	9,958	54	5,680	15
2005	52,498	43,463	62	8,973	0
2004	37,605	28,107	84	9,411	3
2003	37,830	27,509	119	10,183	19
2002	34,291	25,110	118	9,051	12
2001	30,704	22,231	197	8,266	10
2000	26,020	18,371	79	7,559	11
*Chapters 9, 12 and 15					

# Bankruptcy Filing Trends in Missouri: 2000-2025



Prepared by the American  
Bankruptcy Institute  
[www.abi.org](http://www.abi.org)



AMERICAN  
BANKRUPTCY  
INSTITUTE

Total Bankruptcy Filings - Eastern District of Missouri Calendar Years 2000 - 2025					
Year	Total	Chapter 7	Chapter 11	Chapter 13	Other Cases*
2025	6,173	3,734	28	2,397	14
2024	5,802	3,440	42	2,317	3
2023	5,534	3,042	17	2,474	1
2022	4,944	2,817	10	2,117	0
2021	5,722	3,803	18	1,897	4
2020	7,337	5,162	52	2,115	8
2019	9,633	6,086	46	3,496	5
2018	9,873	6,396	12	3,461	4
2017	10,609	6,917	54	3,636	2
2016	10,988	7,065	273	3,645	5
2015	11,350	7,615	15	3,719	1
2014	12,195	8,446	26	3,721	2
2013	13,768	9,741	26	4,000	1
2012	15,914	11,311	139	4,463	1
2011	15,674	11,428	32	4,211	3
2010	17,516	12,696	40	4,774	6
2009	16,018	11,920	40	4,055	3
2008	12,664	8,403	38	4,219	4
2007	10,452	6,543	21	3,885	3
2006	7,789	4,681	24	3,080	4
2005	26,844	21,468	29	5,347	0
2004	19,537	13,393	40	6,103	1
2003	20,217	13,375	71	6,761	10
2002	18,264	12,206	50	6,001	7
2001	16,868	11,128	131	5,603	6
2000	15,118	9,447	26	5,640	5
*Chapters 9, 12 and 15					

# Bankruptcy Filing Trends in Missouri: 2000-2025



Prepared by the American  
Bankruptcy Institute  
[www.abi.org](http://www.abi.org)



AMERICAN  
BANKRUPTCY  
INSTITUTE

Total Bankruptcy Filings - Western District of Missouri Calendar Years 2000 - 2025					
Year	Total	Chapter 7	Chapter 11	Chapter 13	Other Cases*
2025	4,440	2,208	43	2,187	2
2024	3,970	1,951	21	1,994	4
2023	3,948	1,928	18	1,997	5
2022	3,640	1,820	10	1,809	1
2021	4,015	2,575	18	1,420	2
2020	5,231	3,480	28	1,716	7
2019	7,421	4,688	30	2,699	4
2018	7,376	4,835	25	2,510	6
2017	7,531	5,021	31	2,474	5
2016	7,392	5,007	30	2,350	5
2015	7,845	5,451	35	2,356	3
2014	8,975	6,450	35	2,485	5
2013	10,195	7,379	48	2,763	5
2012	12,303	8,969	56	3,276	2
2011	13,409	9,770	82	3,552	5
2010	15,781	11,434	68	4,262	17
2009	15,285	11,443	76	3,758	8
2008	12,732	9,277	44	3,407	4
2007	10,805	7,580	40	3,181	4
2006	7,918	5,277	30	2,600	11
2005	25,654	21,995	33	3,626	0
2004	18,068	14,714	44	3,308	2
2003	17,613	14,134	48	3,422	9
2002	16,027	12,904	68	3,050	5
2001	13,836	11,103	66	2,663	4
2000	10,902	8,924	53	1,919	6
*Chapters 9, 12 and 15					

# Bankruptcy Filing Trends in Missouri: 2000-2025



Prepared by the American  
Bankruptcy Institute  
[www.abi.org](http://www.abi.org)



AMERICAN  
BANKRUPTCY  
INSTITUTE

Business Bankruptcy Cases Filed - Missouri					
Years Ended December 31, 2000 - 2025					
CALENDAR YEAR	TOTAL FILINGS	CHAPTER 7	CHAPTER 11	CHAPTER 13	OTHER CASES*
2025	230	128	67	19	16
2024	205	119	62	17	7
2023	125	68	34	17	6
2022	117	80	17	19	1
2021	146	82	35	23	6
2020	255	148	77	15	15
2019	292	178	73	32	9
2018	265	192	31	32	10
2017	322	203	79	33	7
2016	560	204	299	47	10
2015	321	236	46	35	4
2014	364	270	58	29	7
2013	448	346	67	29	6
2012	717	483	191	40	3
2011	639	483	106	42	8
2010	772	594	100	55	23
2009	833	662	106	54	11
2008	676	540	80	48	8
2007	384	275	58	44	7
2006	284	187	48	34	15
2005	438	341	57	40	0
2004	354	242	76	33	3
2003	378	201	113	45	19
2002	394	228	107	47	12
2001	505	251	184	60	10
2000	369	248	72	38	11
* Chapters 9, 12 and 15					

# Bankruptcy Filing Trends in Missouri: 2000-2025



Prepared by the American  
Bankruptcy Institute  
[www.abi.org](http://www.abi.org)



AMERICAN  
BANKRUPTCY  
INSTITUTE

Business Bankruptcy Filings - Eastern District of Missouri Calendar Years 2000 - 2025					
Year	Total	Chapter 7	Chapter 11	Chapter 13	Other Cases*
2025	114	68	27	5	14
2024	121	70	42	6	3
2023	58	39	16	2	1
2022	63	45	9	9	0
2021	78	49	18	7	4
2020	144	74	52	10	8
2019	156	91	45	15	5
2018	134	104	9	17	4
2017	187	115	53	17	2
2016	408	106	270	27	5
2015	148	116	14	17	1
2014	181	139	25	15	2
2013	218	185	23	9	1
2012	390	235	136	18	1
2011	251	208	28	12	3
2010	380	317	37	20	6
2009	401	339	38	21	3
2008	334	274	36	20	4
2007	176	135	19	19	3
2006	129	93	20	12	4
2005	198	153	25	20	0
2004	159	112	36	10	1
2003	168	76	67	15	10
2002	181	116	42	16	7
2001	296	146	123	21	6
2000	184	135	24	20	5
*Chapters 9, 12 and 15					

# Bankruptcy Filing Trends in Missouri: 2000-2025



Prepared by the American  
Bankruptcy Institute  
[www.abi.org](http://www.abi.org)



AMERICAN  
BANKRUPTCY  
INSTITUTE

Business Bankruptcy Filings - Western District of Missouri Calendar Years 2000 - 2025					
Year	Total	Chapter 7	Chapter 11	Chapter 13	Other Cases*
2025	116	60	40	14	2
2024	84	49	20	11	4
2023	67	29	18	15	5
2022	54	35	8	10	1
2021	68	33	17	16	2
2020	111	74	25	5	7
2019	136	87	28	17	4
2018	131	88	22	15	6
2017	135	88	26	16	5
2016	152	98	29	20	5
2015	173	120	32	18	3
2014	183	131	33	14	5
2013	230	161	44	20	5
2012	327	248	55	22	2
2011	388	275	78	30	5
2010	392	277	63	35	17
2009	432	323	68	33	8
2008	342	266	44	28	4
2007	208	140	39	25	4
2006	155	94	28	22	11
2005	240	188	32	20	0
2004	195	130	40	23	2
2003	210	125	46	30	9
2002	213	112	65	31	5
2001	209	105	61	39	4
2000	185	113	48	18	6
*Chapters 9, 12 and 15					

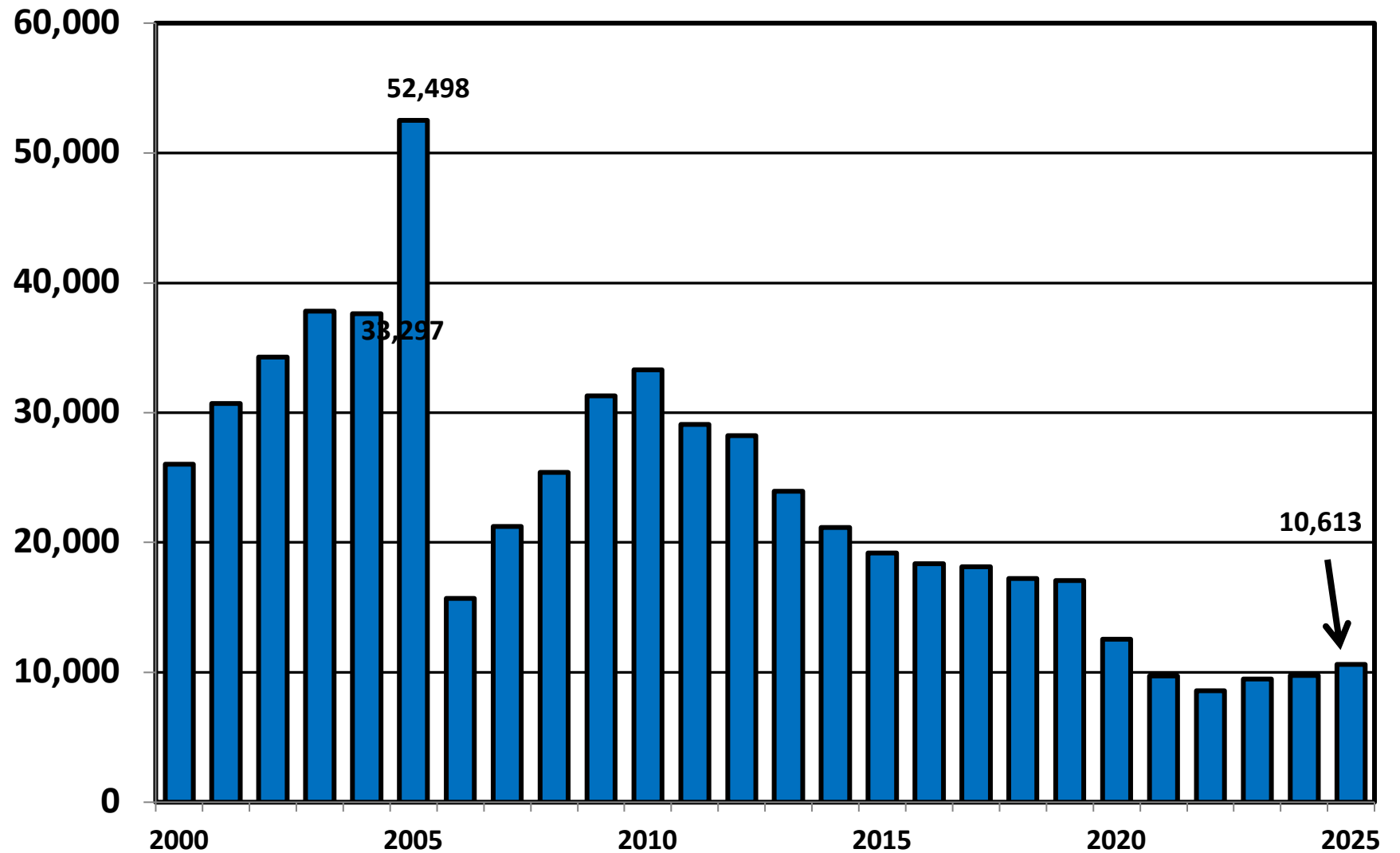
# Bankruptcy Filing Trends in Missouri: 2000-2025



Prepared by the American  
Bankruptcy Institute  
[www.abi.org](http://www.abi.org)



## Total Bankruptcy Cases Filed in Missouri Calendar Years 2000 - 2025



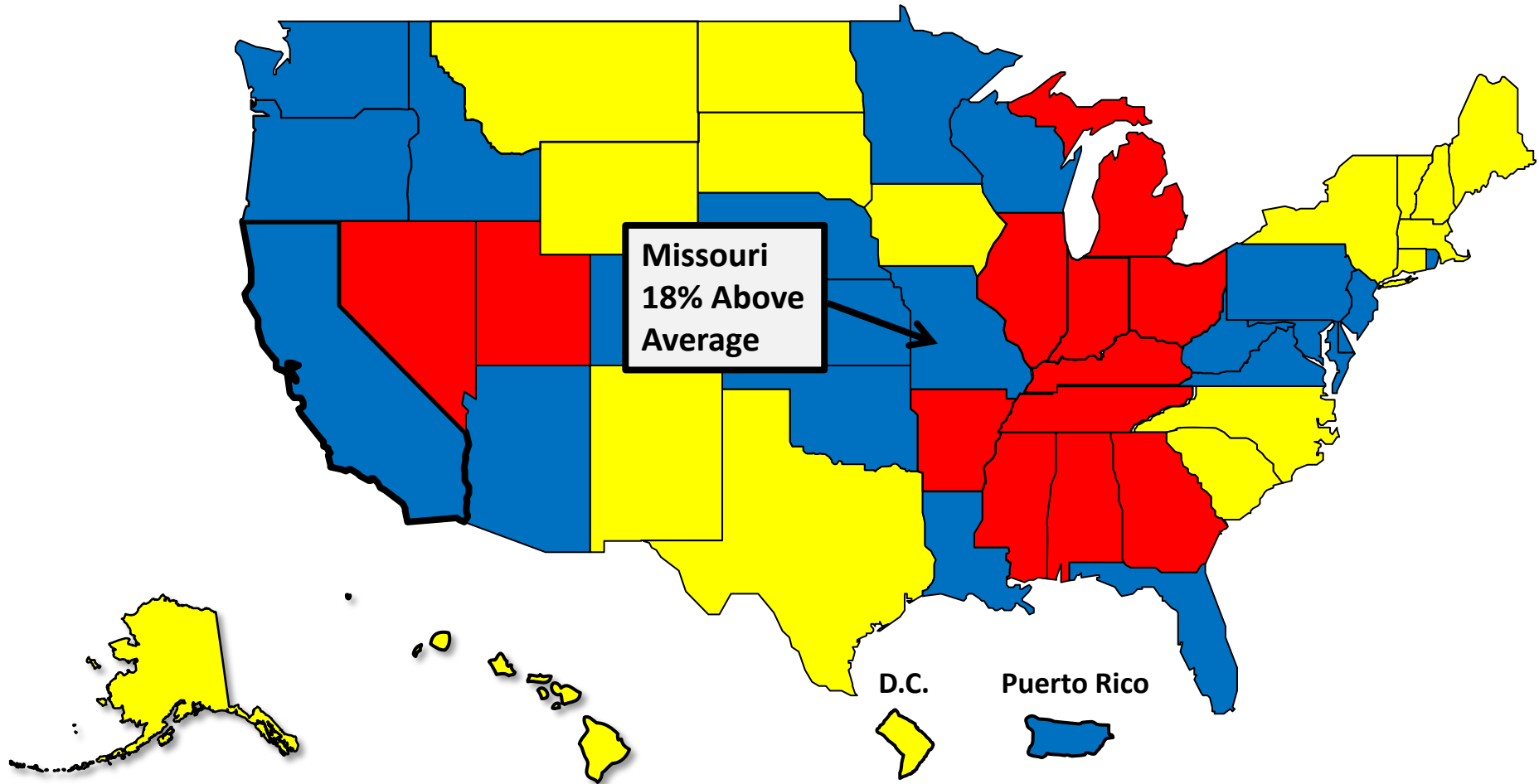
# Bankruptcy Filing Trends in Missouri: 2000-2025



Prepared by the American Bankruptcy Institute  
[www.abi.org](http://www.abi.org)



## Total Filings Relative to Population 2000 - 2025



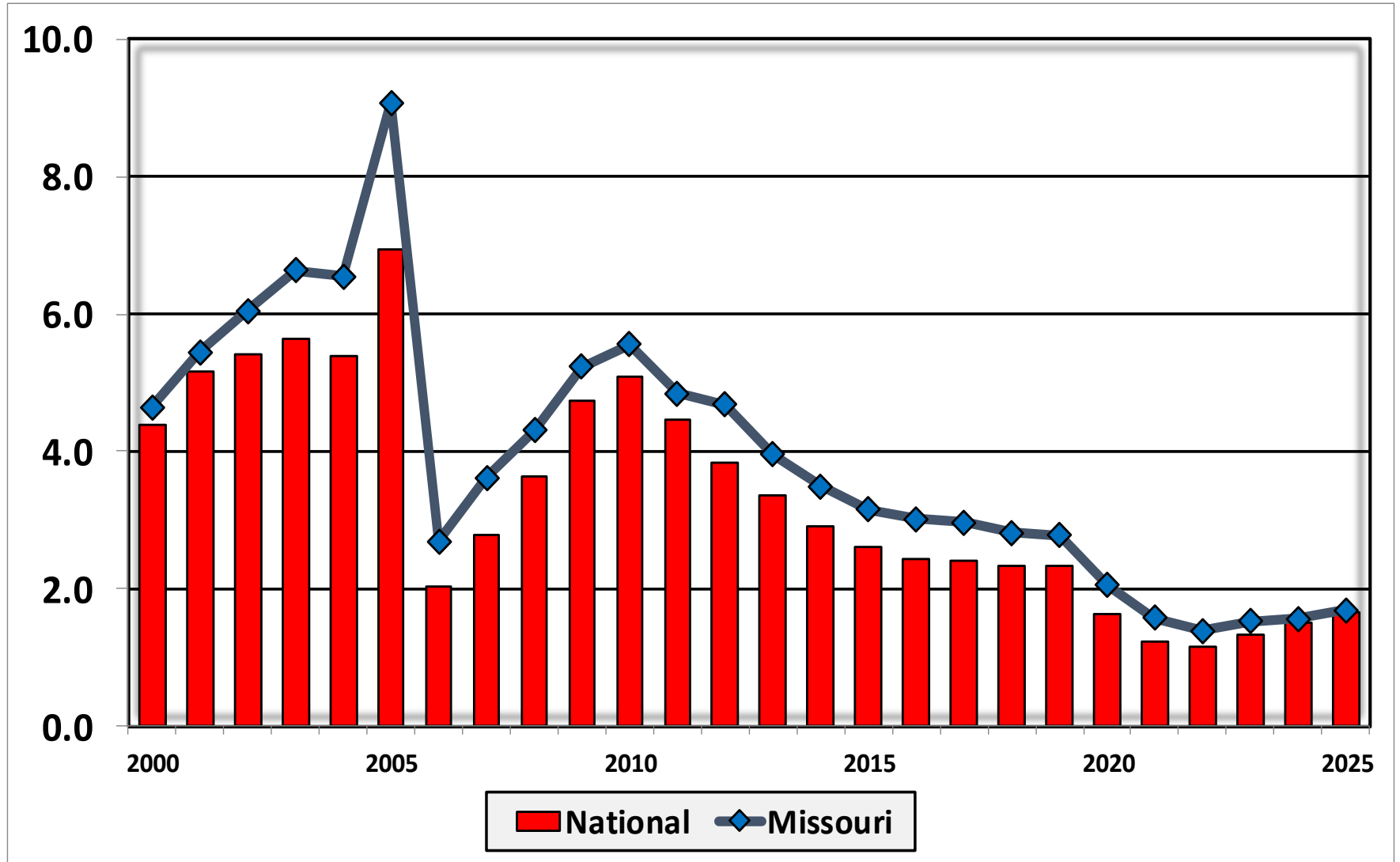
# Bankruptcy Filing Trends in Missouri: 2000-2025



Prepared by the American  
Bankruptcy Institute  
[www.abi.org](http://www.abi.org)



## Bankruptcy Filings per 1,000 Population Missouri vs. National Average 2000 - 2025



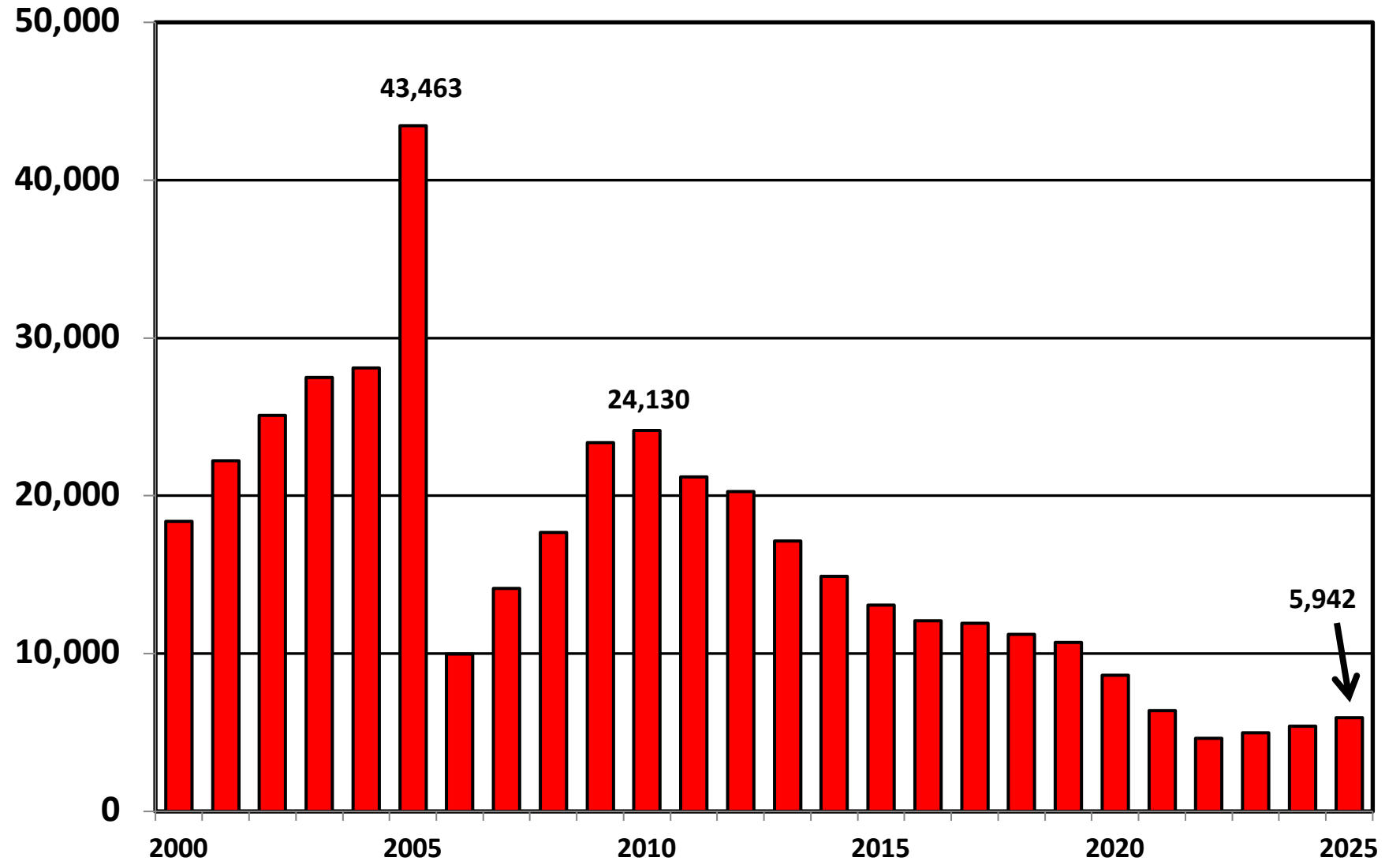
# Bankruptcy Filing Trends in Missouri: 2000-2025



Prepared by the American  
Bankruptcy Institute  
[www.abi.org](http://www.abi.org)



## Chapter 7 Cases Filed In Missouri Calendar Years 2000 - 2025



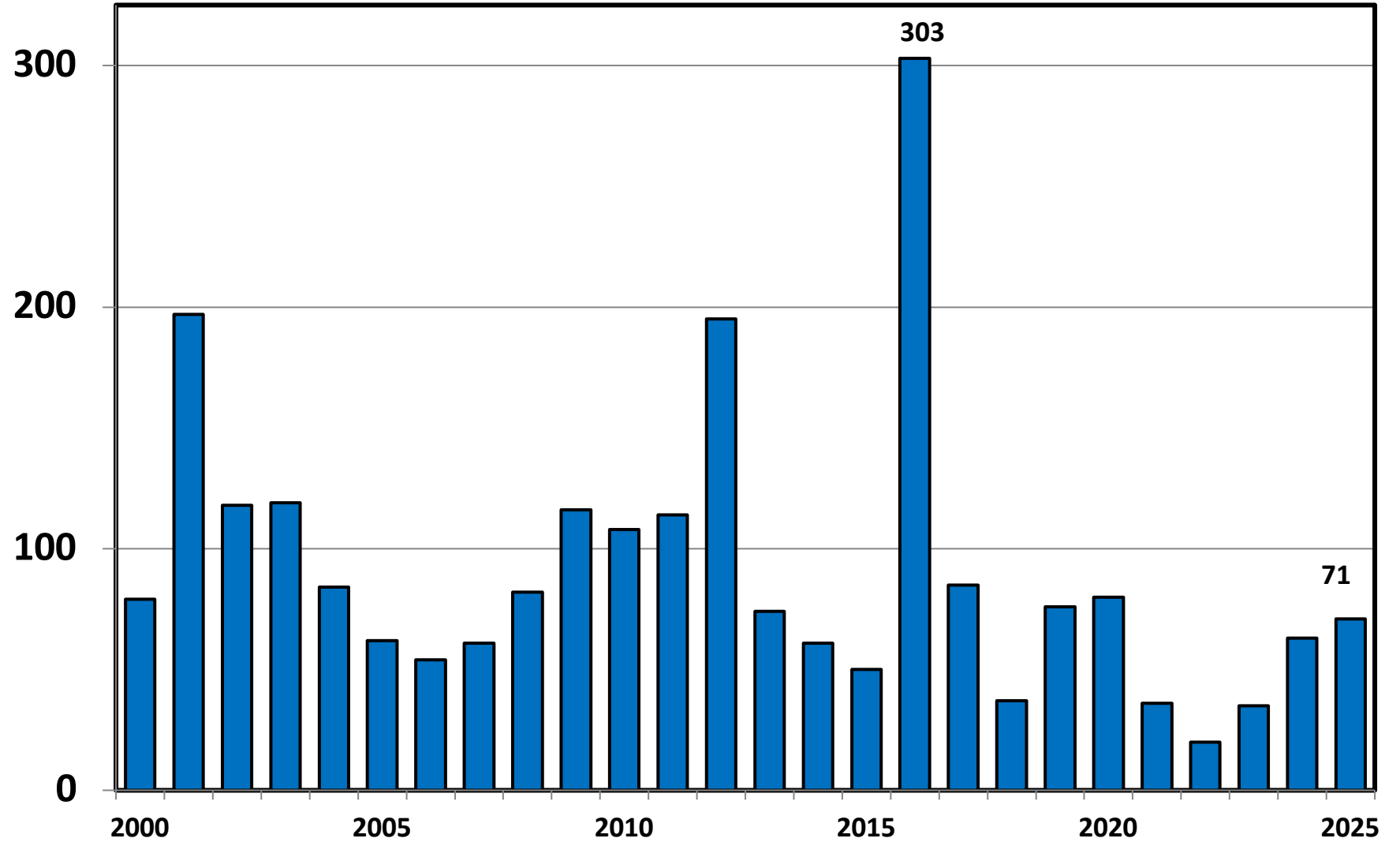
# Bankruptcy Filing Trends in Missouri: 2000-2025



Prepared by the American  
Bankruptcy Institute  
[www.abi.org](http://www.abi.org)



## Chapter 11 Cases Filed in Missouri 2000 - 2025



# Bankruptcy Filing Trends in Missouri: 2000-2025

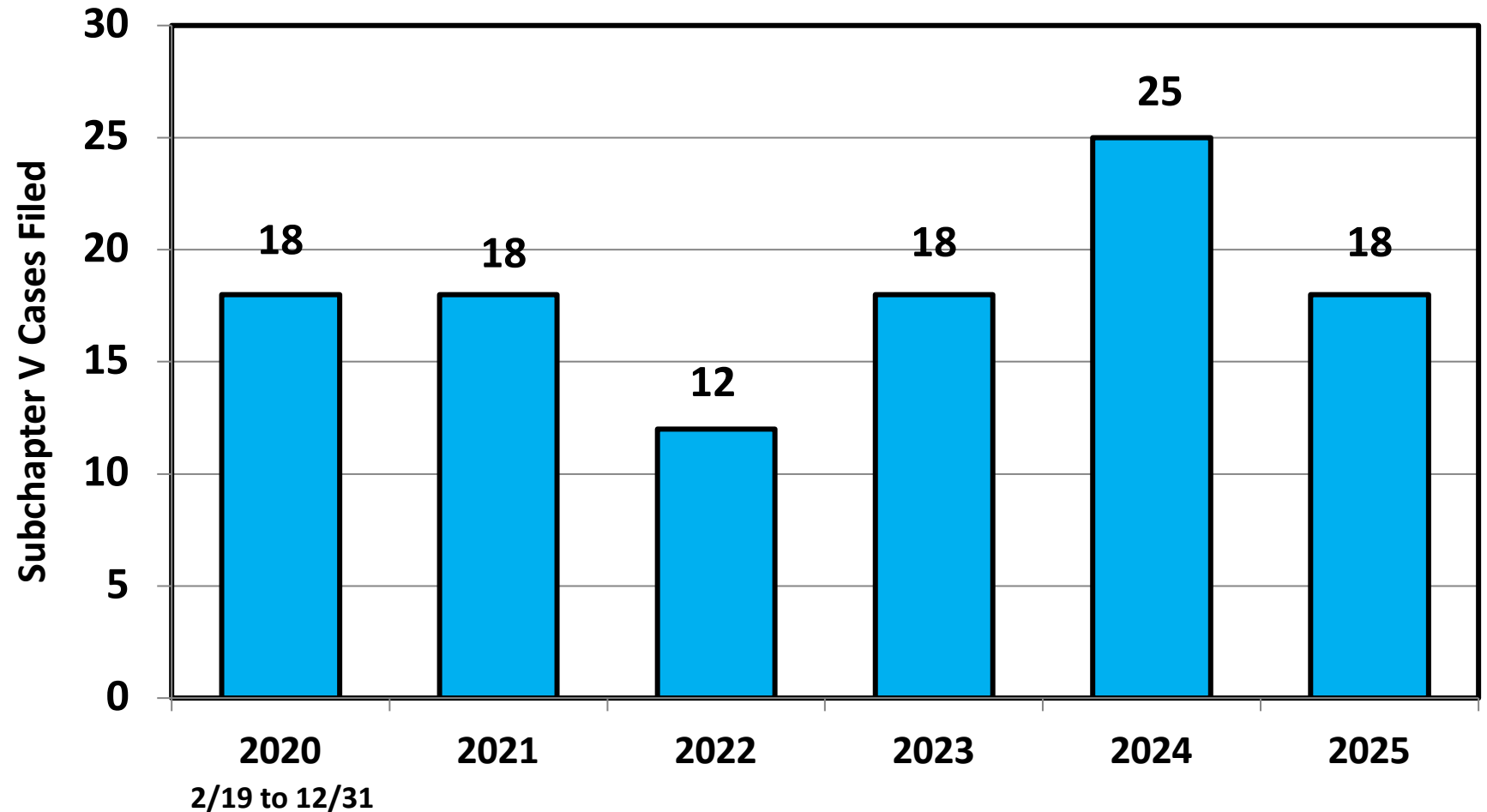


Prepared by the American  
Bankruptcy Institute  
[www.abi.org](http://www.abi.org)



AMERICAN  
BANKRUPTCY  
INSTITUTE

## Subchapter V Cases Filed in Missouri Calendar Years 2020 - 2025



Source: ABI review of PACER records

# Bankruptcy Filing Trends in Missouri: 2000-2025

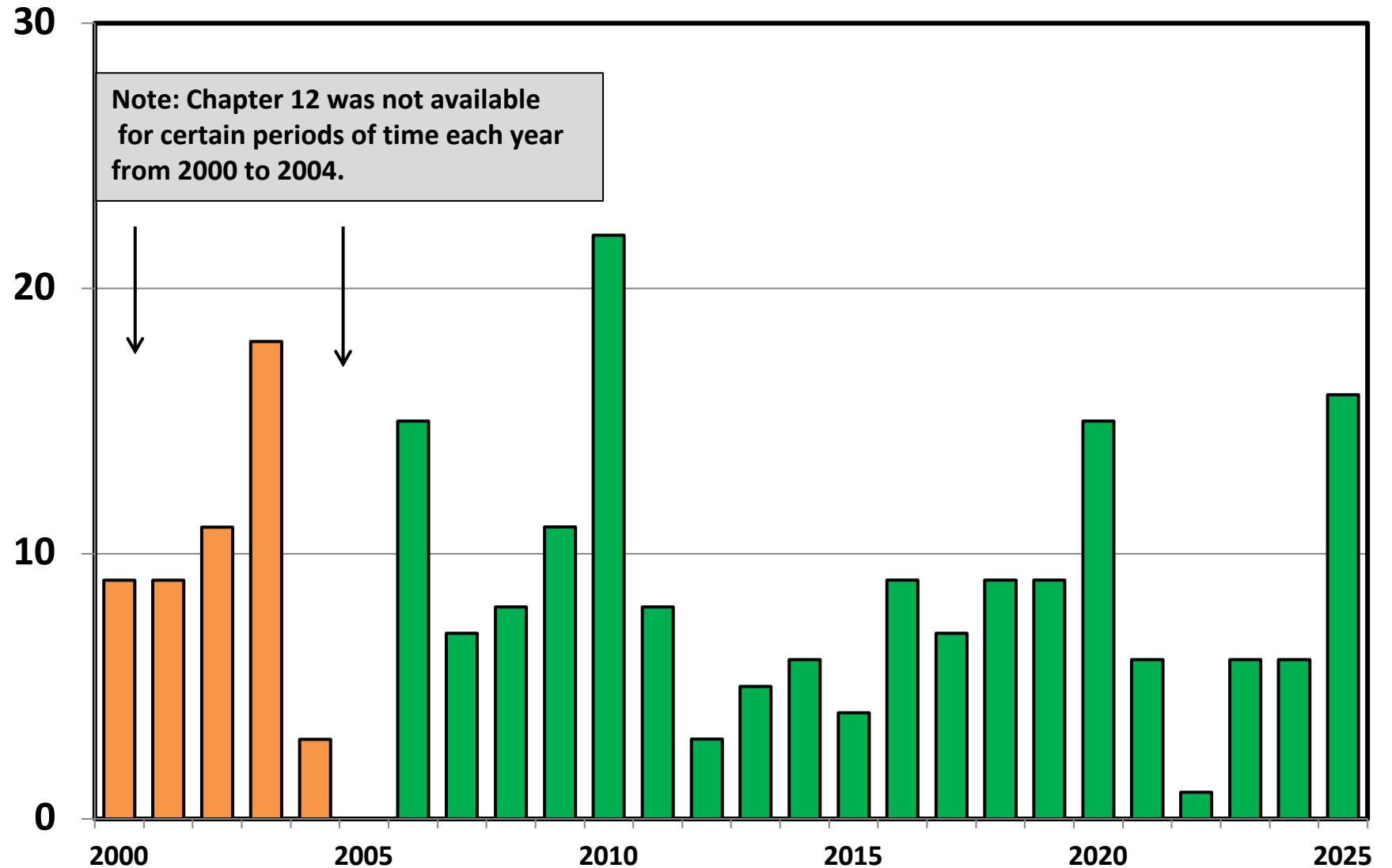


Prepared by the American Bankruptcy Institute  
[www.abi.org](http://www.abi.org)



AMERICAN  
BANKRUPTCY  
INSTITUTE

## Chapter 12 Cases Filed in Missouri 2000 - 2025



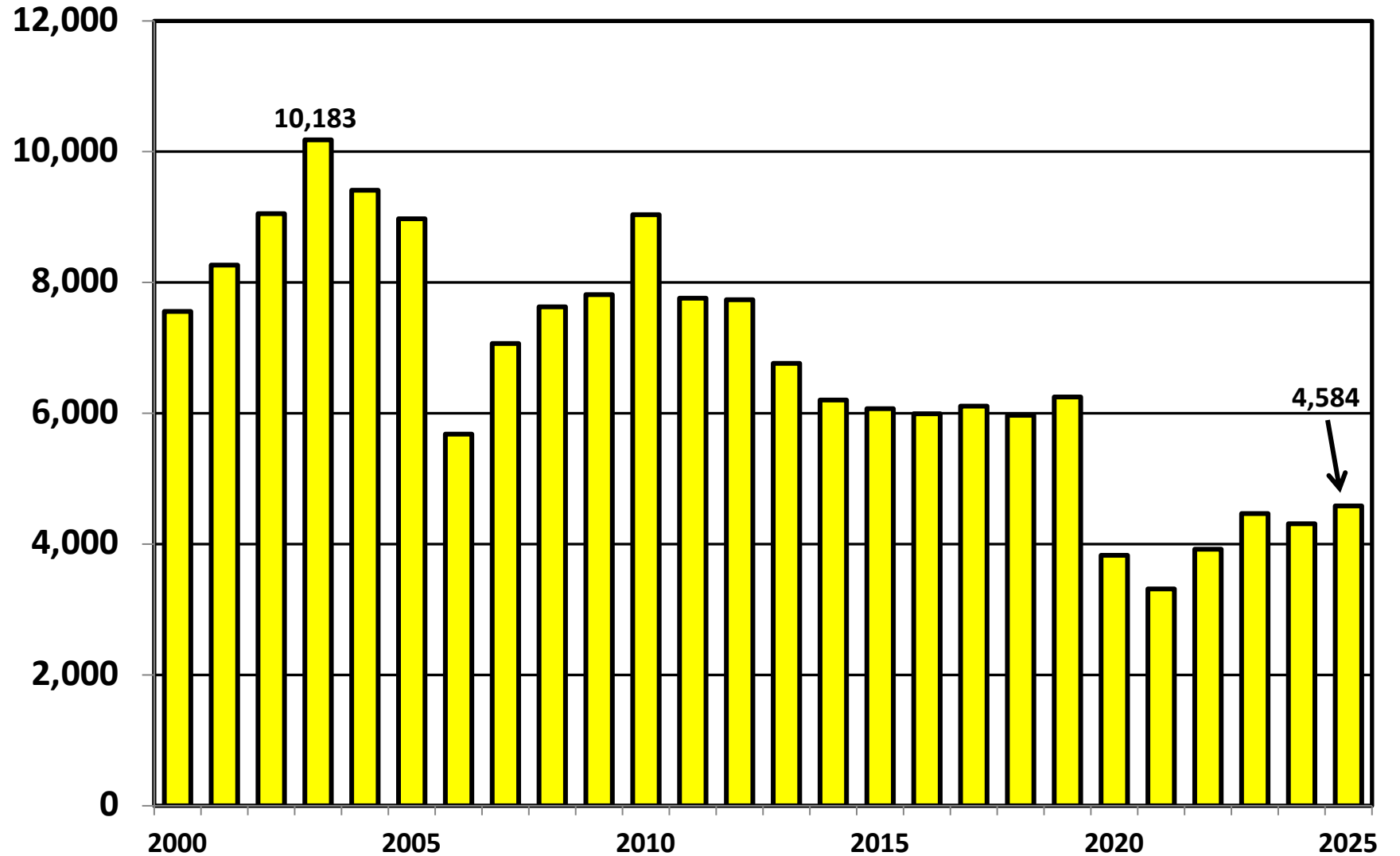
# Bankruptcy Filing Trends in Missouri: 2000-2025



Prepared by the American  
Bankruptcy Institute  
[www.abi.org](http://www.abi.org)



## Chapter 13 Cases Filed in Missouri 2000 - 2025



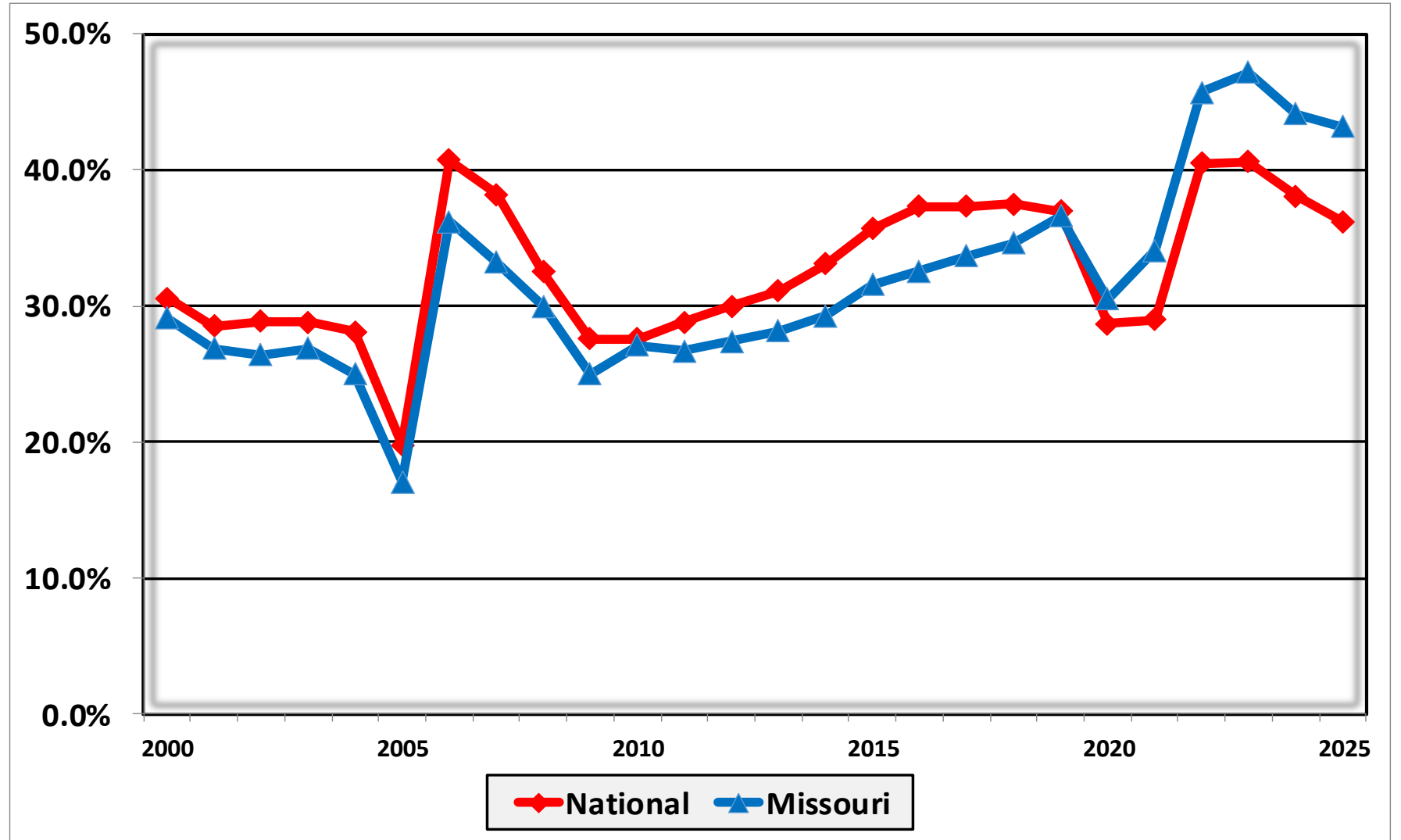
# Bankruptcy Filing Trends in Missouri: 2000-2025



Prepared by the American  
Bankruptcy Institute  
[www.abi.org](http://www.abi.org)



## Percent of Cases Filed as Chapter 13 Calendar Years 2000 - 2025



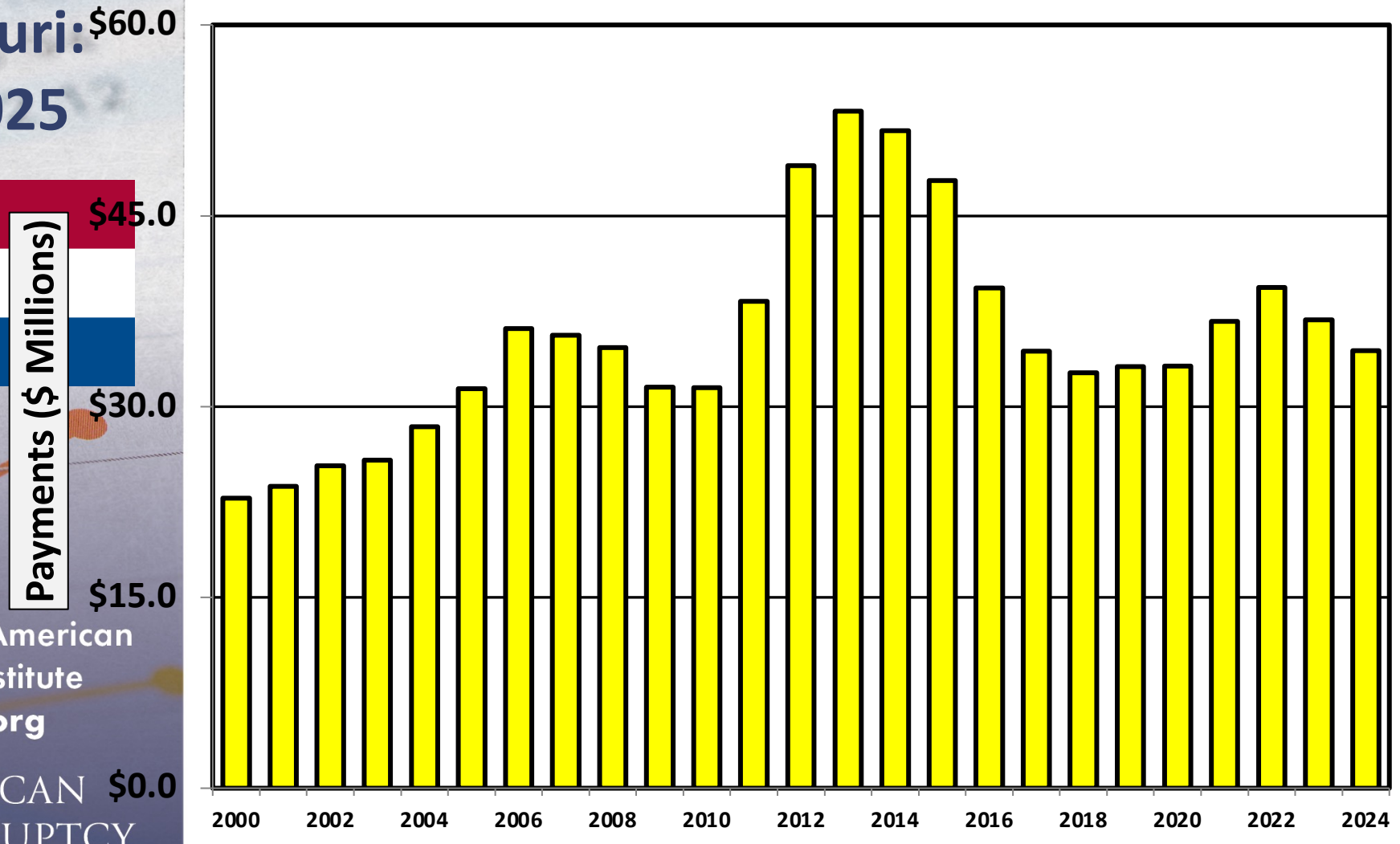
# Bankruptcy Filing Trends in Missouri: 2000-2025



Prepared by the American Bankruptcy Institute  
[www.abi.org](http://www.abi.org)



**Chapter 13 Cases in Missouri**  
Amount (in Millions) Paid to Unsecured Creditors  
Fiscal Years 2000 - 2024



Source: Executive Office for United States Trustees

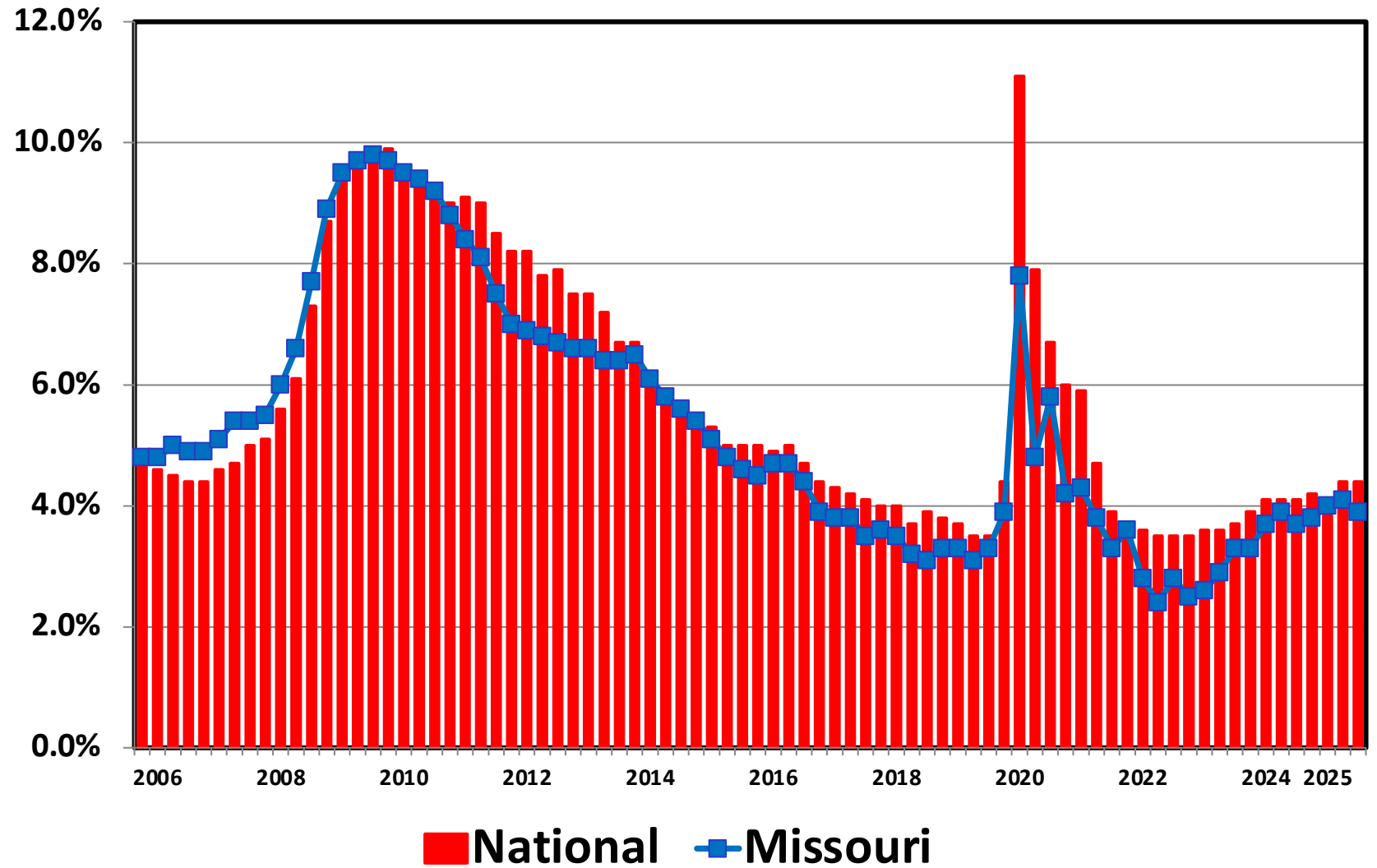
# Bankruptcy Filing Trends in Missouri: 2000-2025



Prepared by the American  
Bankruptcy Institute  
[www.abi.org](http://www.abi.org)



## Unemployment Rate By Quarter 2006 - 2025



Source: Bureau of Labor Statistics

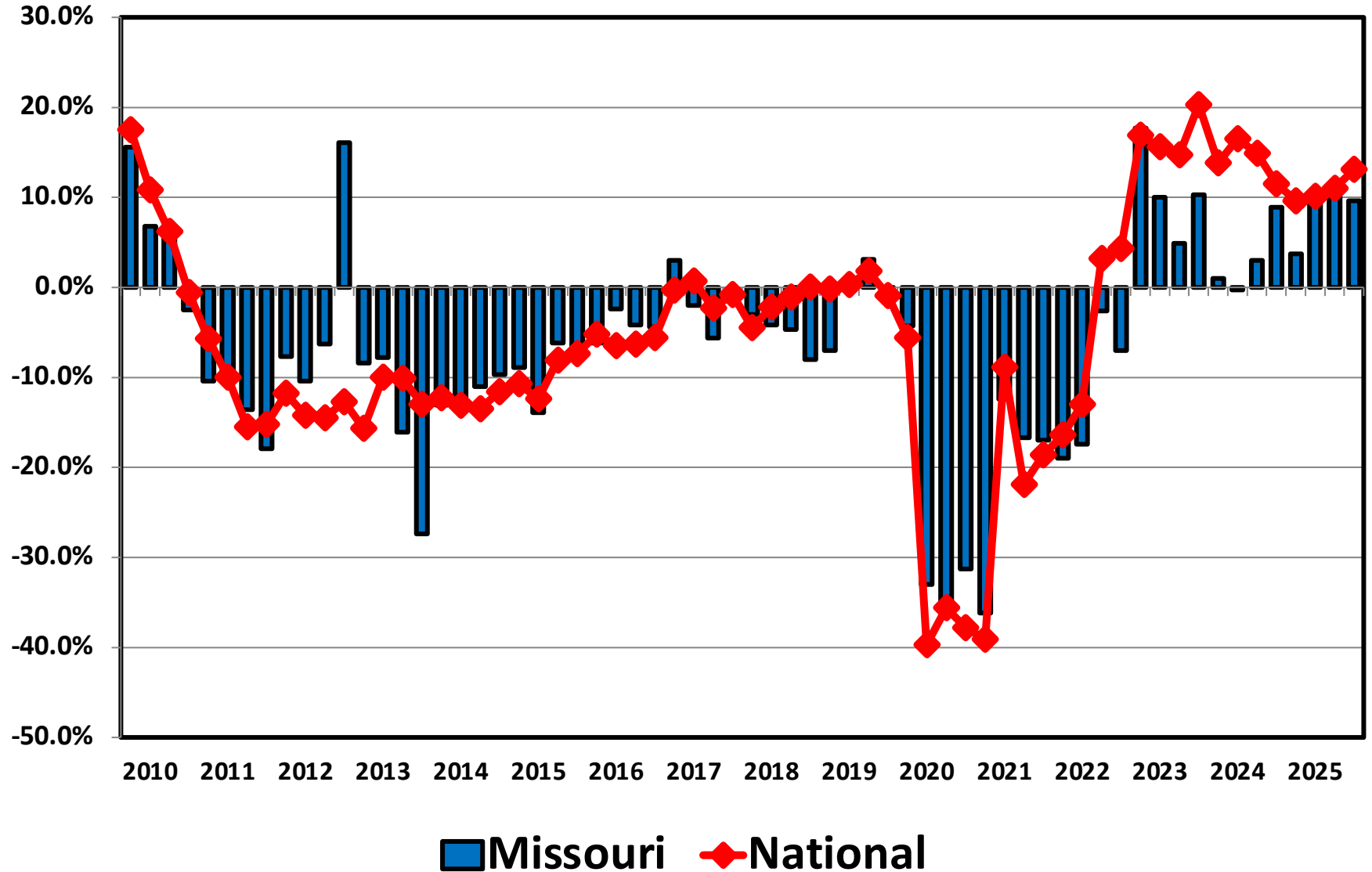
# Bankruptcy Filing Trends in Missouri: 2000-2025



Prepared by the American Bankruptcy Institute  
[www.abi.org](http://www.abi.org)



## Filing Trends By Quarter Missouri vs. National Average (Percent Change From Same Quarter One Year Prior)



# Bankruptcy Filing Trends in Missouri: 2000-2025

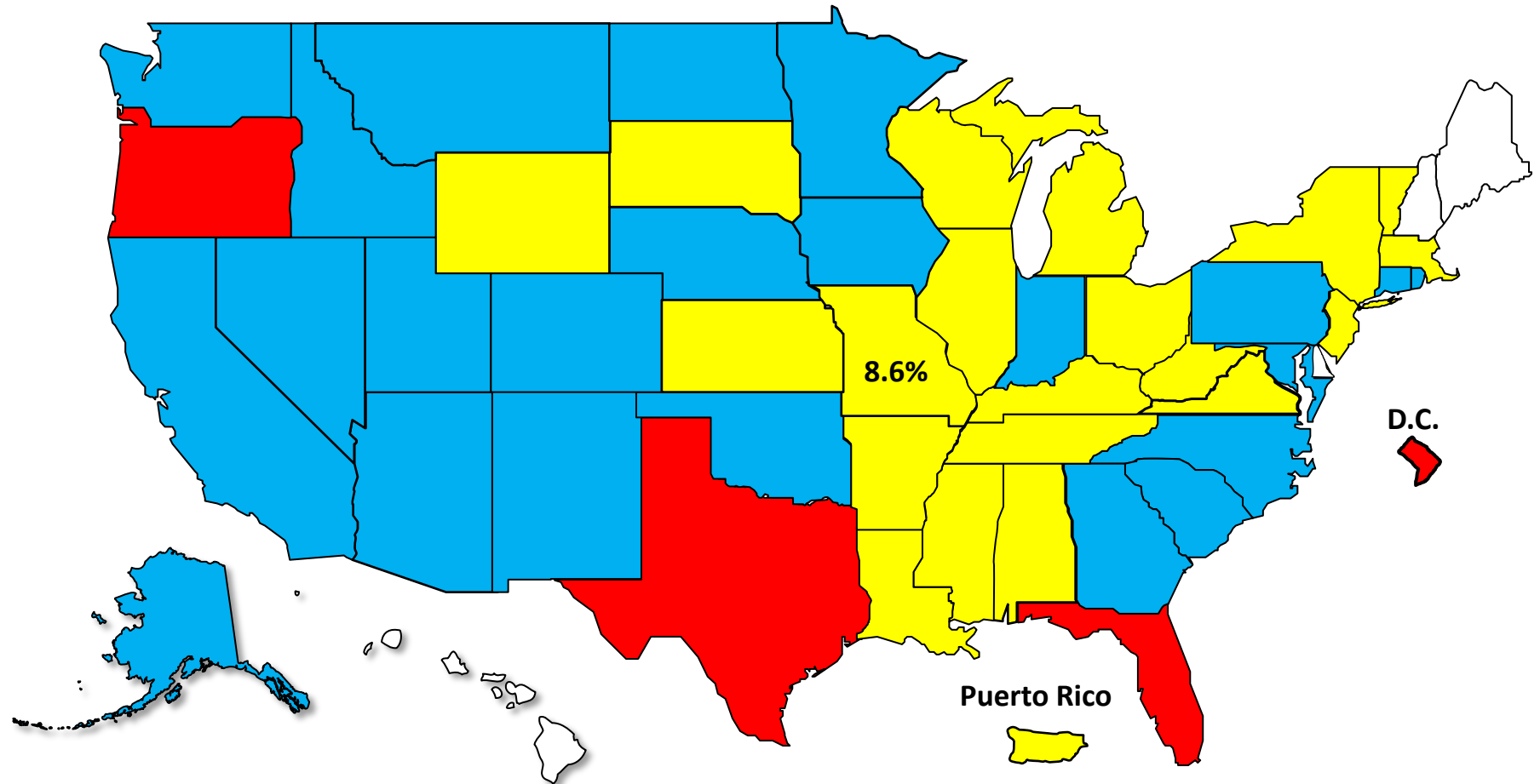


Prepared by the American Bankruptcy Institute  
[www.abi.org](http://www.abi.org)



## Bankruptcy Filing Trends Calendar Year 2025 vs. 2024 National Average = 11.0% Increase

+20% or More    +10.0% to 19.9%    +0% to 9.9%    Decline





# Bankruptcy Filing Trends in Missouri: 2000-2025



Prepared by the American Bankruptcy Institute  
[www.abi.org](http://www.abi.org)





AMERICAN BANKRUPTCY INSTITUTE

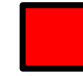
## Percent Change in Total Filings Calendar Year 2025 Compared to 2010 (National Average = 63.9% Decrease)

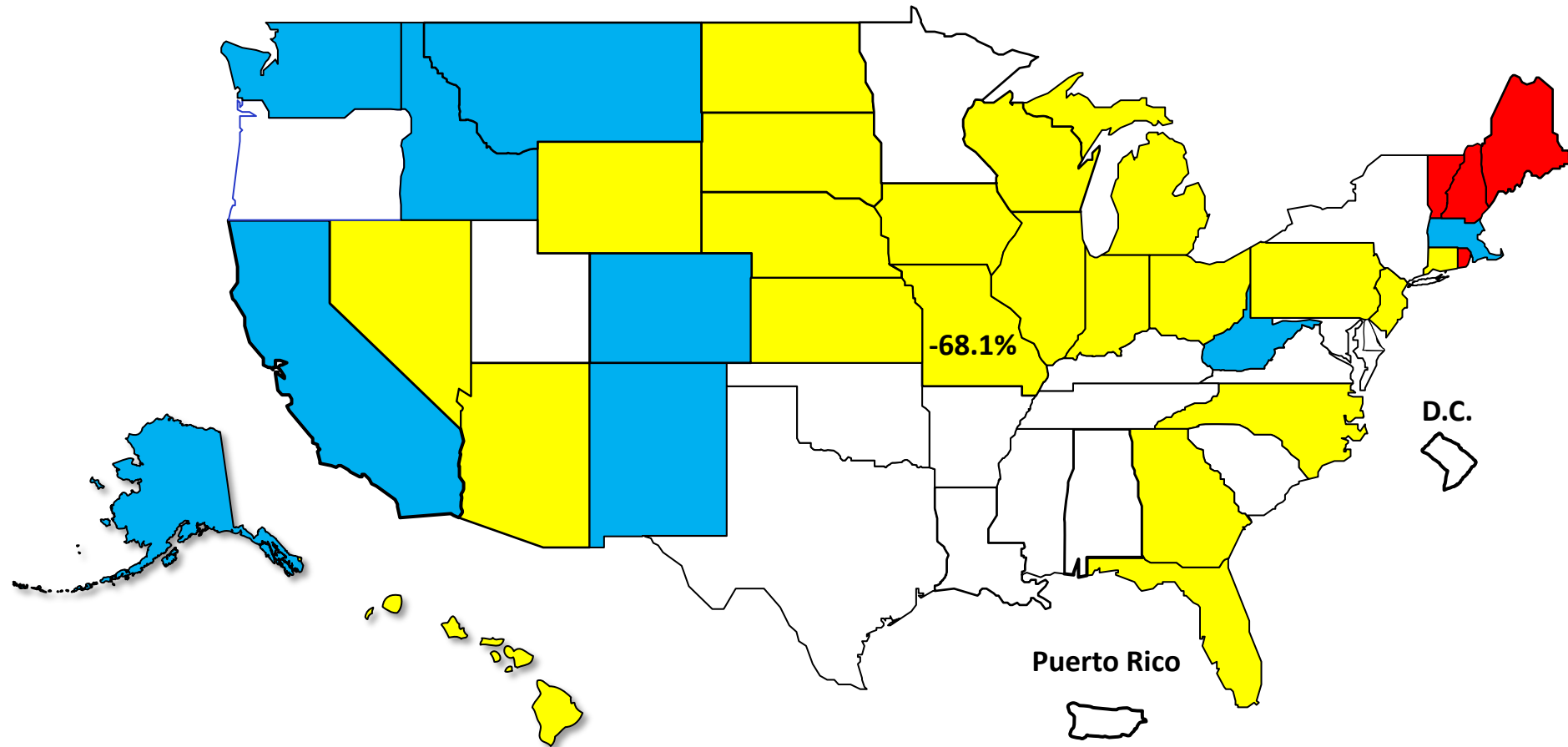
### Amount of Decrease

 Under 60%

 60.0% - 69.9%

 70.0% - 79.9%

 80.0% or More





# AMERICAN BANKRUPTCY INSTITUTE

Prepared by the American Bankruptcy Institute. [www.abi.org](http://www.abi.org)