

# Bankruptcy Filing Trends in Indiana: 2000-2025



Prepared by the American Bankruptcy Institute. [www.abi.org](http://www.abi.org)



# Bankruptcy Filing Trends in Indiana: 2000-2025



Prepared by the American Bankruptcy Institute  
[www.abi.org](http://www.abi.org)



# Indiana

State at a Glance		
	Indiana	National
Population (7/1/2025)	6,973,333	341,784,857
- Change since April 2020	2.8%	3.1%
- Foreign Born	6.3%	14.1%
Size (Square Miles)	35,826	3,533,038
Median Household Income	\$71,957	\$80,734
Persons per Household	2.46	2.53
Per Capita Income	\$38,351	\$44,673
Median Home Value	\$218,200	\$332,700
Homeownership Rate	70.6%	65.2%
High School Graduate (or Higher)	90.4%	89.6%
College Graduate (or Higher)	29.5%	35.7%
Disabled	10.5%	9.3%
No Health Insurance	8.9%	9.6%
In Poverty	12.2%	10.6%
Source: U.S. Census Bureau January 2026		

# Bankruptcy Filing Trends in Indiana: 2000-2025



Prepared by the American  
Bankruptcy Institute  
[www.abi.org](http://www.abi.org)



AMERICAN  
BANKRUPTCY  
INSTITUTE

Bankruptcy Filings in Indiana Calendar Years 2000 - 2025					
Year	Total	Chapter 7	Chapter 11	Chapter 13	Other Cases*
2025	18,210	10,233	64	7,904	9
2024	16,319	9,255	66	6,987	1
2023	14,681	8,420	58	6,202	1
2022	13,076	7,833	58	5,183	2
2021	14,487	10,101	47	4,332	7
2020	17,298	12,328	36	4,923	11
2019	23,332	14,855	56	8,413	8
2018	23,141	15,091	79	7,956	15
2017	23,339	15,571	67	7,690	11
2016	24,207	16,525	69	7,605	8
2015	26,600	18,707	67	7,813	13
2014	29,235	20,966	98	8,164	7
2013	33,846	24,402	117	9,321	6
2012	36,181	26,230	115	9,826	10
2011	39,336	29,192	118	10,019	7
2010	47,304	35,036	187	12,072	9
2009	48,238	35,543	164	12,526	5
2008	39,305	27,833	137	11,328	7
2007	31,122	21,429	98	9,581	14
2006	22,234	14,380	100	7,747	7
2005	78,959	66,042	124	12,781	12
2004	54,465	42,742	132	11,590	1
2003	55,795	44,697	170	10,914	14
2002	53,520	43,015	196	10,307	2
2001	48,066	38,699	173	9,189	5
2000	37,524	29,878	92	7,548	6

# Bankruptcy Filing Trends in Indiana: 2000-2025



Prepared by the American Bankruptcy Institute  
[www.abi.org](http://www.abi.org)



Total Bankruptcy Filings - Northern District of Indiana Calendar Years 2000 - 2025					
Year	Total	Chapter 7	Chapter 11	Chapter 13	Other Cases*
2025	7,134	4,131	20	2,983	0
2024	6,416	3,668	24	2,724	0
2023	5,922	3,535	15	2,372	0
2022	5,076	3,112	21	1,943	0
2021	5,634	4,193	20	1,419	2
2020	6,833	5,150	8	1,672	3
2019	9,096	6,103	20	2,971	2
2018	8,935	6,112	22	2,800	1
2017	9,342	6,430	25	2,884	3
2016	9,853	7,034	37	2,780	2
2015	10,827	7,938	31	2,850	8
2014	11,649	8,837	23	2,787	2
2013	13,617	10,415	34	3,163	5
2012	14,430	10,942	46	3,436	6
2011	15,909	12,493	31	3,383	2
2010	18,845	14,885	64	3,891	5
2009	19,266	15,320	64	3,882	0
2008	14,737	11,092	50	3,593	2
2007	11,764	8,583	45	3,127	9
2006	8,279	5,648	37	2,593	1
2005	31,244	27,135	46	4,057	6
2004	20,695	17,125	34	3,536	0
2003	21,155	17,650	60	3,438	7
2002	20,864	17,468	41	3,353	2
2001	18,890	15,832	65	2,991	2
2000	14,102	11,851	36	2,213	2
*Chapters 9, 12 and 15					

# Bankruptcy Filing Trends in Indiana: 2000-2025



Prepared by the American  
Bankruptcy Institute  
[www.abi.org](http://www.abi.org)



AMERICAN  
BANKRUPTCY  
INSTITUTE

Total Bankruptcy Filings - Southern District of Indiana Calendar Years 2000 - 2025					
Year	Total	Chapter 7	Chapter 11	Chapter 13	Other Cases*
2025	11,076	6,102	44	4,921	9
2024	9,903	5,587	42	4,273	1
2023	8,759	4,885	43	3,830	1
2022	8,000	4,721	37	3,240	2
2021	8,853	5,908	27	2,913	5
2020	10,465	7,178	28	3,251	8
2019	14,236	8,867	36	5,327	6
2018	14,206	8,979	57	5,156	14
2017	13,997	9,141	42	4,806	8
2016	14,354	9,491	32	4,825	6
2015	15,773	10,769	36	4,963	5
2014	17,586	12,129	75	5,377	5
2013	20,229	13,987	83	6,158	1
2012	21,751	15,288	69	6,390	4
2011	23,427	16,699	87	6,636	5
2010	28,459	20,151	123	8,181	4
2009	28,972	20,223	100	8,644	5
2008	24,568	16,741	87	7,735	5
2007	19,358	12,846	53	6,454	5
2006	13,955	8,732	63	5,154	6
2005	47,715	38,907	78	8,724	6
2004	33,770	25,617	98	8,054	1
2003	34,640	27,047	110	7,476	7
2002	32,656	25,547	155	6,954	0
2001	29,176	22,867	108	6,198	3
2000	23,422	18,027	56	5,335	4
*Chapters 9, 12 and 15					

# Bankruptcy Filing Trends in Indiana: 2000-2025



Prepared by the American  
Bankruptcy Institute  
[www.abi.org](http://www.abi.org)



AMERICAN  
BANKRUPTCY  
INSTITUTE

Business Bankruptcy Cases Filed - Indiana Years Ended December 31, 2000 - 2025					
CALENDAR YEAR	TOTAL FILINGS	CHAPTER 7	CHAPTER 11	CHAPTER 13	OTHER CASES*
2025	259	166	64	20	9
2024	233	150	60	22	1
2023	221	152	55	13	1
2022	168	102	54	10	2
2021	196	129	43	17	7
2020	234	170	33	20	11
2019	318	223	55	32	8
2018	291	183	72	21	15
2017	327	221	61	34	11
2016	375	271	64	32	8
2015	398	298	61	26	13
2014	484	347	90	40	7
2013	581	421	109	45	6
2012	689	513	108	58	10
2011	729	544	112	66	7
2010	918	650	176	83	9
2009	949	730	151	63	5
2008	835	628	124	76	7
2007	608	462	88	44	14
2006	376	241	87	41	7
2005	758	588	100	58	12
2004	524	364	117	42	1
2003	640	408	161	57	14
2002	661	431	185	43	2
2001	604	389	159	51	5
2000	398	265	80	47	6
* Chapters 9, 12 and 15					

# Bankruptcy Filing Trends in Indiana: 2000-2025



Prepared by the American  
Bankruptcy Institute  
[www.abi.org](http://www.abi.org)



AMERICAN  
BANKRUPTCY  
INSTITUTE

Business Bankruptcy Filings - Northern District of Indiana Calendar Years 2000 - 2025					
Year	Total	Chapter 7	Chapter 11	Chapter 13	Other Cases*
2025	83	57	20	6	0
2024	90	58	22	10	0
2023	67	50	12	5	0
2022	59	37	19	3	0
2021	66	42	18	4	2
2020	73	55	7	8	3
2019	90	53	20	15	2
2018	88	57	20	10	1
2017	113	73	23	14	3
2016	153	105	33	13	2
2015	138	94	25	11	8
2014	145	108	18	17	2
2013	206	148	32	21	5
2012	227	148	44	29	6
2011	262	205	30	25	2
2010	308	212	59	32	5
2009	342	265	59	18	0
2008	297	223	43	29	2
2007	227	164	40	14	9
2006	124	81	30	12	1
2005	212	162	34	10	6
2004	148	111	31	6	0
2003	203	117	57	22	7
2002	202	146	37	17	2
2001	189	104	59	24	2
2000	126	78	31	15	2
*Chapters 9, 12 and 15					

# Bankruptcy Filing Trends in Indiana: 2000-2025



Prepared by the American  
Bankruptcy Institute  
[www.abi.org](http://www.abi.org)



AMERICAN  
BANKRUPTCY  
INSTITUTE

Business Bankruptcy Filings - Southern District of Indiana Calendar Years 2000 - 2025					
Year	Total	Chapter 7	Chapter 11	Chapter 13	Other Cases*
2025	176	109	44	14	9
2024	143	92	38	12	1
2023	154	102	43	8	1
2022	109	65	35	7	2
2021	130	87	25	13	5
2020	161	115	26	12	8
2019	228	168	35	19	6
2018	203	126	52	11	14
2017	214	148	38	20	8
2016	222	166	31	19	6
2015	260	204	36	15	5
2014	339	239	72	23	5
2013	375	273	77	24	1
2012	462	365	64	29	4
2011	467	339	82	41	5
2010	610	438	117	51	4
2009	607	465	92	45	5
2008	538	405	81	47	5
2007	381	298	48	30	5
2006	252	160	57	29	6
2005	546	426	66	48	6
2004	376	253	86	36	1
2003	437	291	104	35	7
2002	459	285	148	26	0
2001	415	285	100	27	3
2000	272	187	49	32	4
*Chapters 9, 12 and 15					

# Bankruptcy Filing Trends in Indiana: 2000-2025

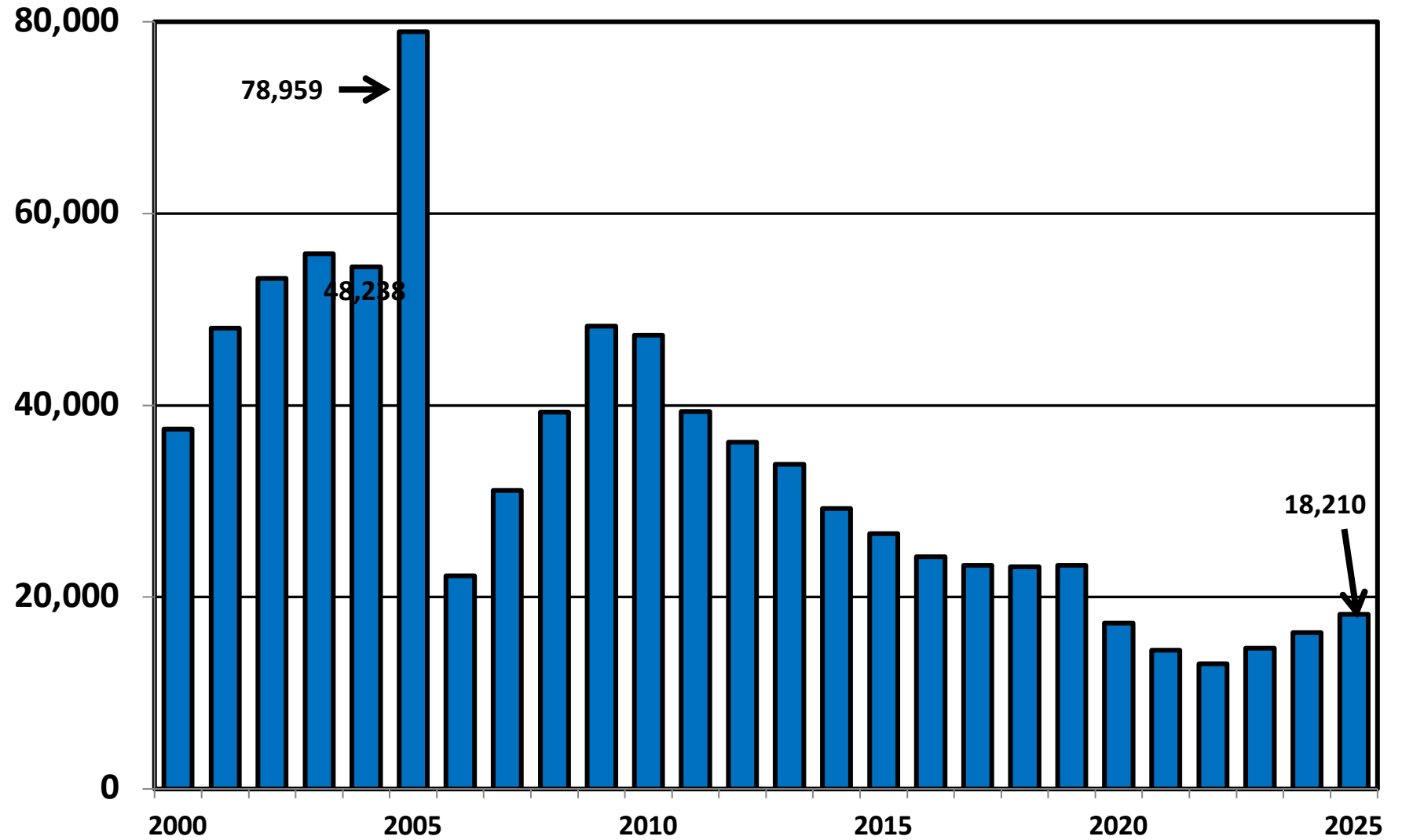


Prepared by the American  
Bankruptcy Institute  
[www.abi.org](http://www.abi.org)



AMERICAN  
BANKRUPTCY  
INSTITUTE

## Total Bankruptcy Cases Filed in Indiana Calendar Years 2000 - 2025



# Bankruptcy Filing Trends in Indiana: 2000-2025



Prepared by the American Bankruptcy Institute  
[www.abi.org](http://www.abi.org)



AMERICAN BANKRUPTCY INSTITUTE

## Total Filings Relative to Population 2000 - 2025



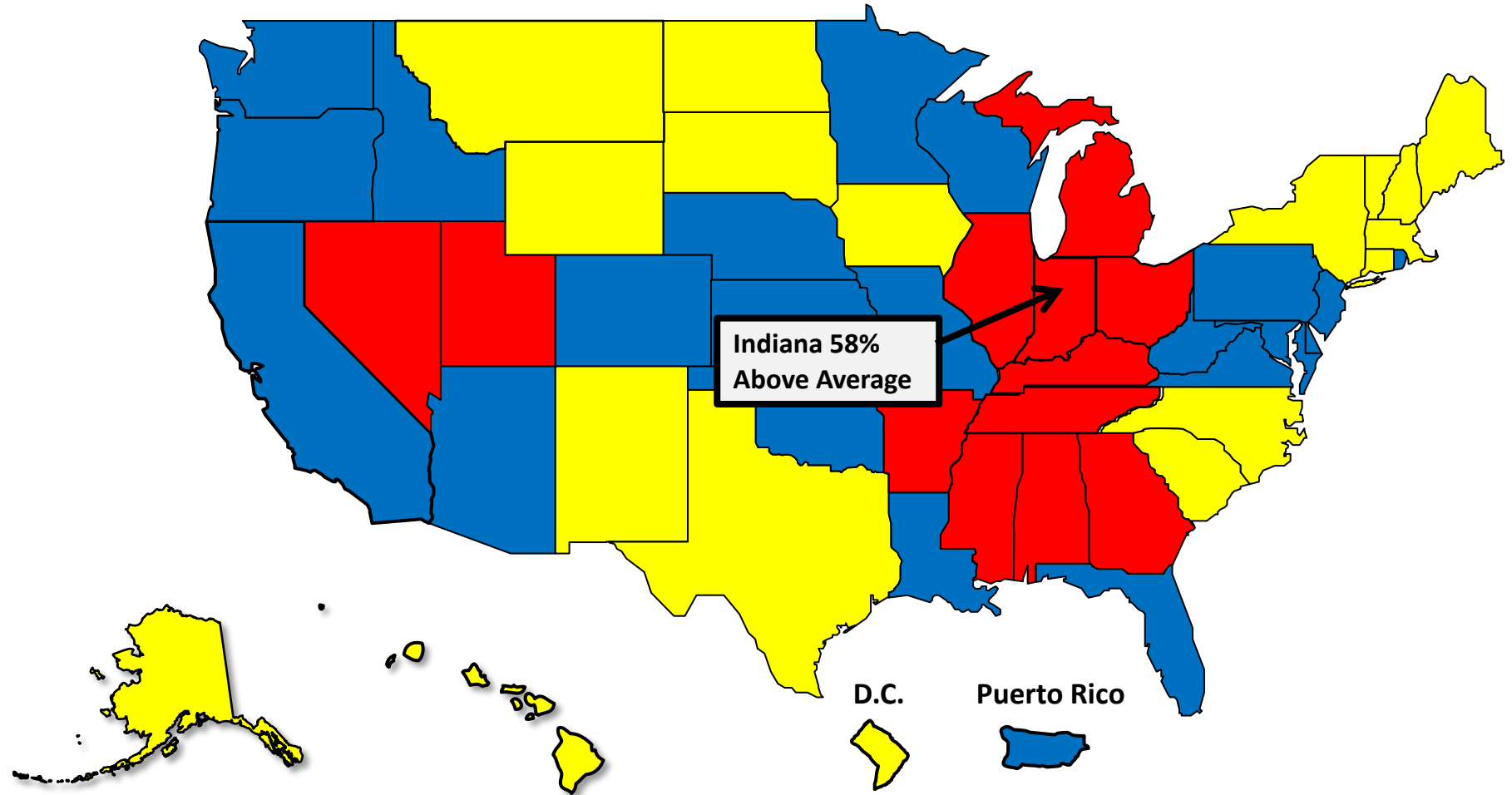
More than 25% Above Average



Within 25% of Average



More than 25% Below Average



D.C.

Puerto Rico

# Bankruptcy Filing Trends in Indiana: 2000-2025

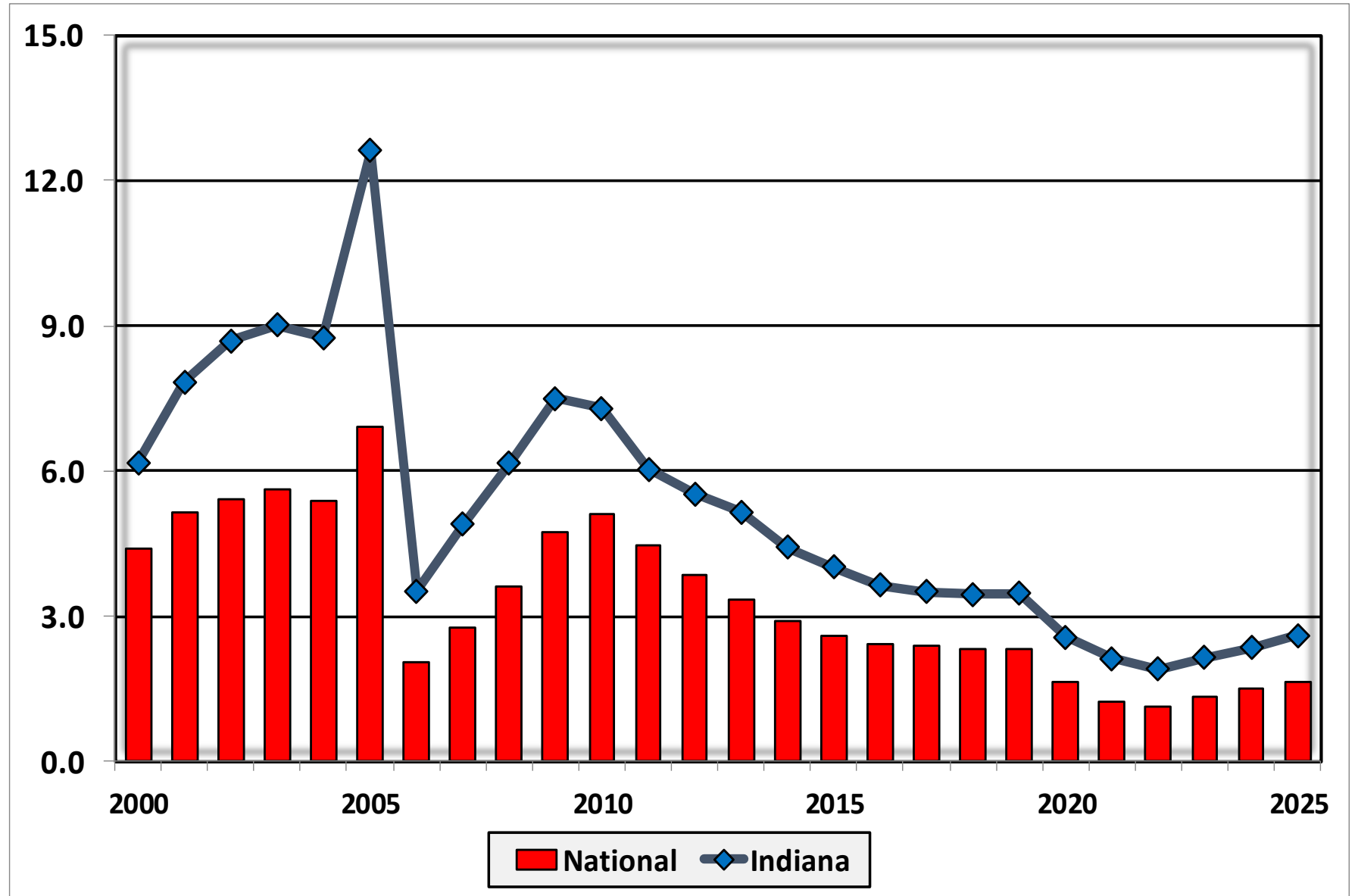


Prepared by the American  
Bankruptcy Institute  
[www.abi.org](http://www.abi.org)



AMERICAN  
BANKRUPTCY  
INSTITUTE

## Bankruptcy Filings per 1,000 Population Indiana vs. National Average 2000 - 2025



# Bankruptcy Filing Trends in Indiana: 2000-2025

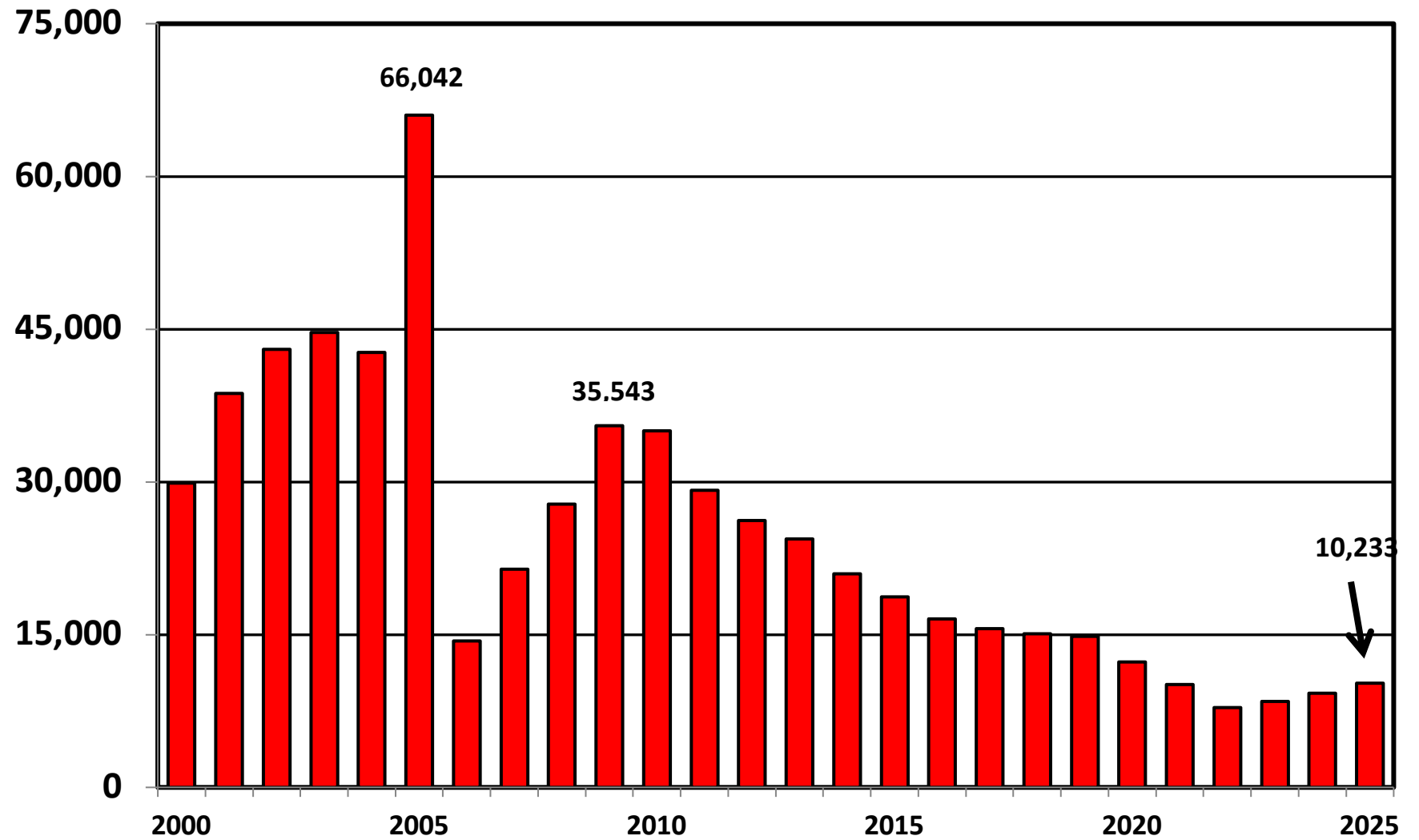


Prepared by the American  
Bankruptcy Institute  
[www.abi.org](http://www.abi.org)



AMERICAN  
BANKRUPTCY  
INSTITUTE

## Chapter 7 Cases Filed In Indiana Calendar Years 2000 - 2025



# Bankruptcy Filing Trends in Indiana: 2000-2025

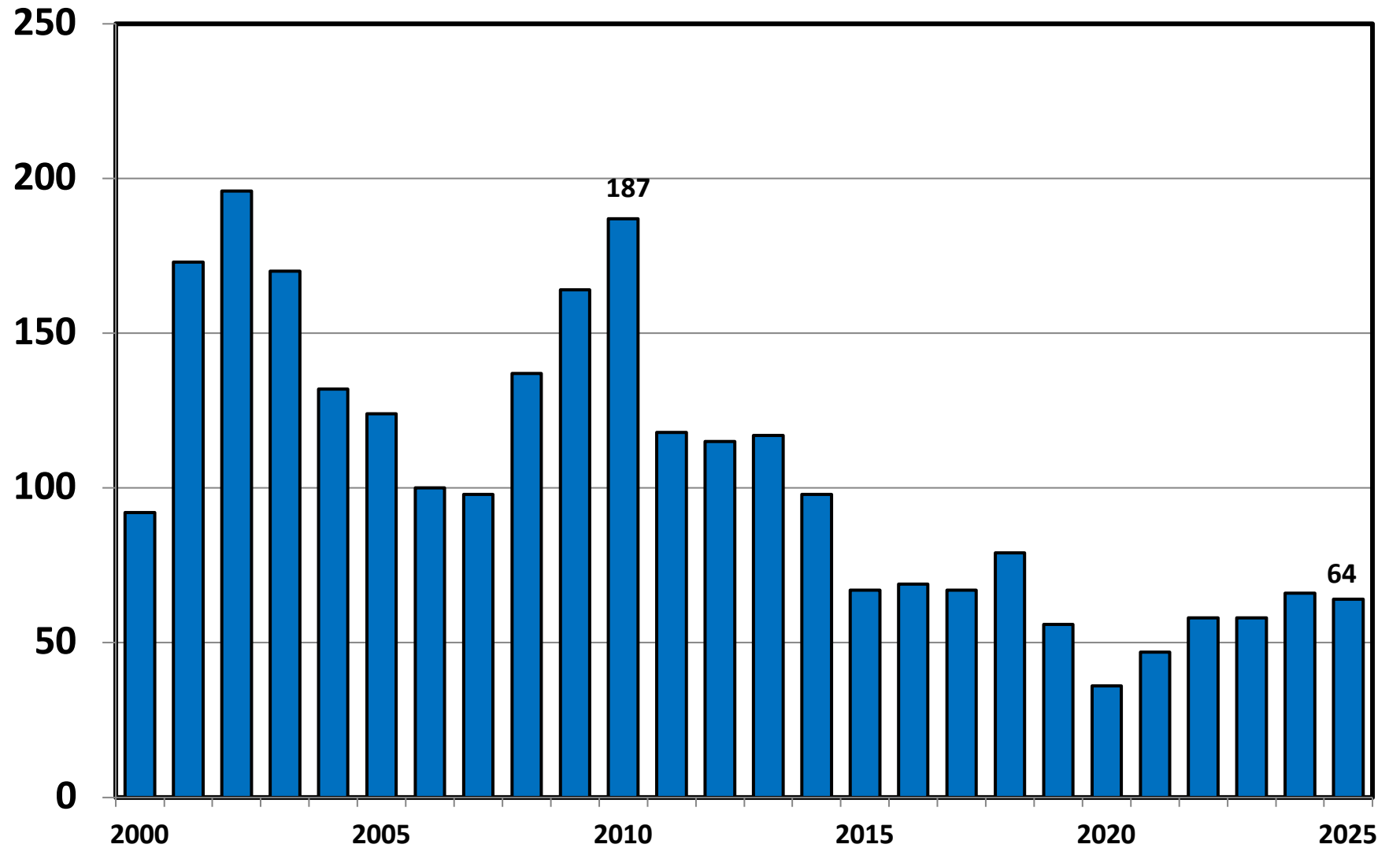


Prepared by the American  
Bankruptcy Institute  
[www.abi.org](http://www.abi.org)



AMERICAN  
BANKRUPTCY  
INSTITUTE

## Chapter 11 Cases Filed in Indiana 2000 - 2025



# Bankruptcy Filing Trends in Indiana: 2000-2025

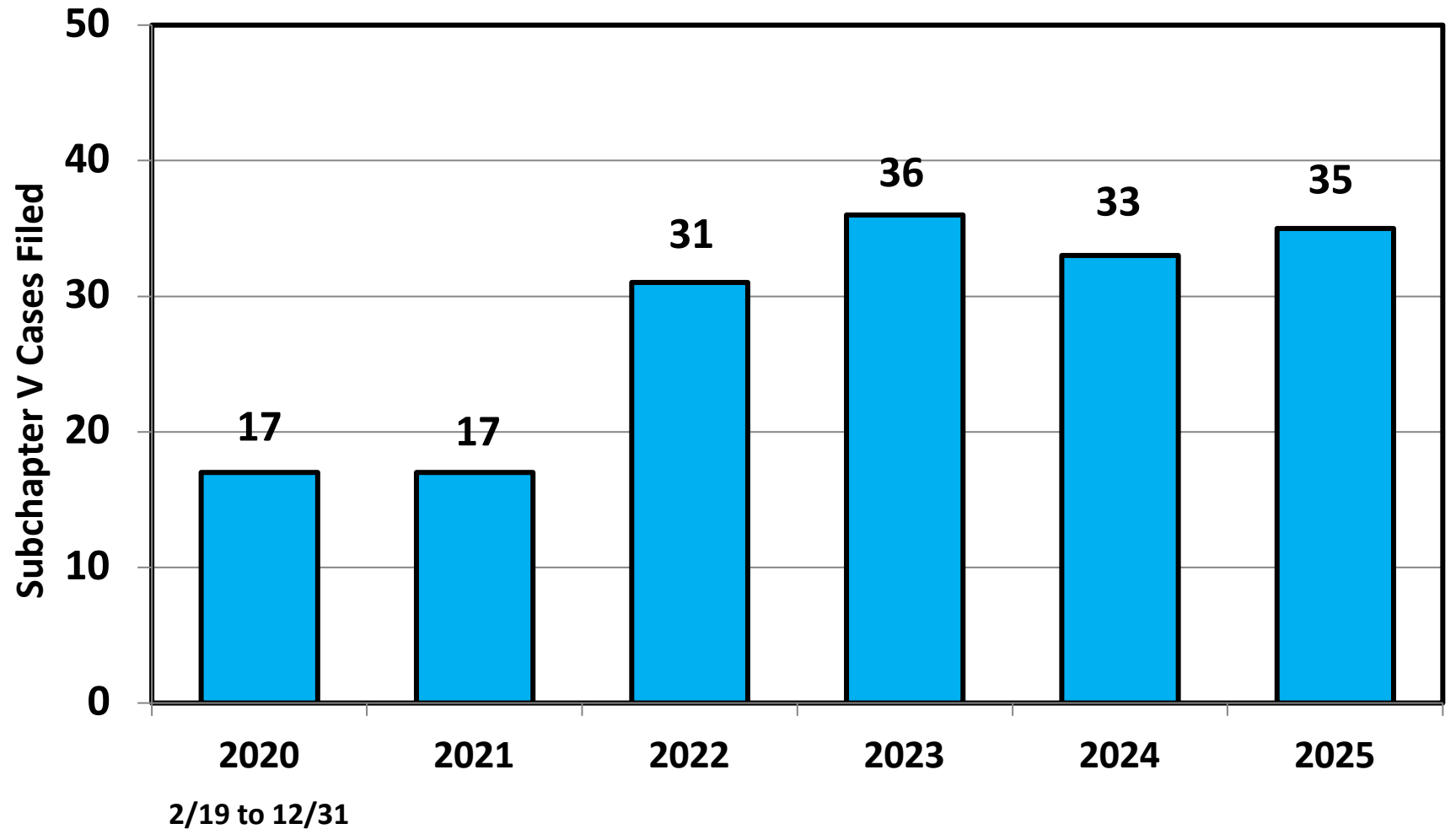


Prepared by the American  
Bankruptcy Institute  
[www.abi.org](http://www.abi.org)



AMERICAN  
BANKRUPTCY  
INSTITUTE

## Subchapter V Cases Filed in Indiana Calendar Years 2020 - 2025



Source: ABI review of PACER records

# Bankruptcy Filing Trends in Indiana: 2000-2025

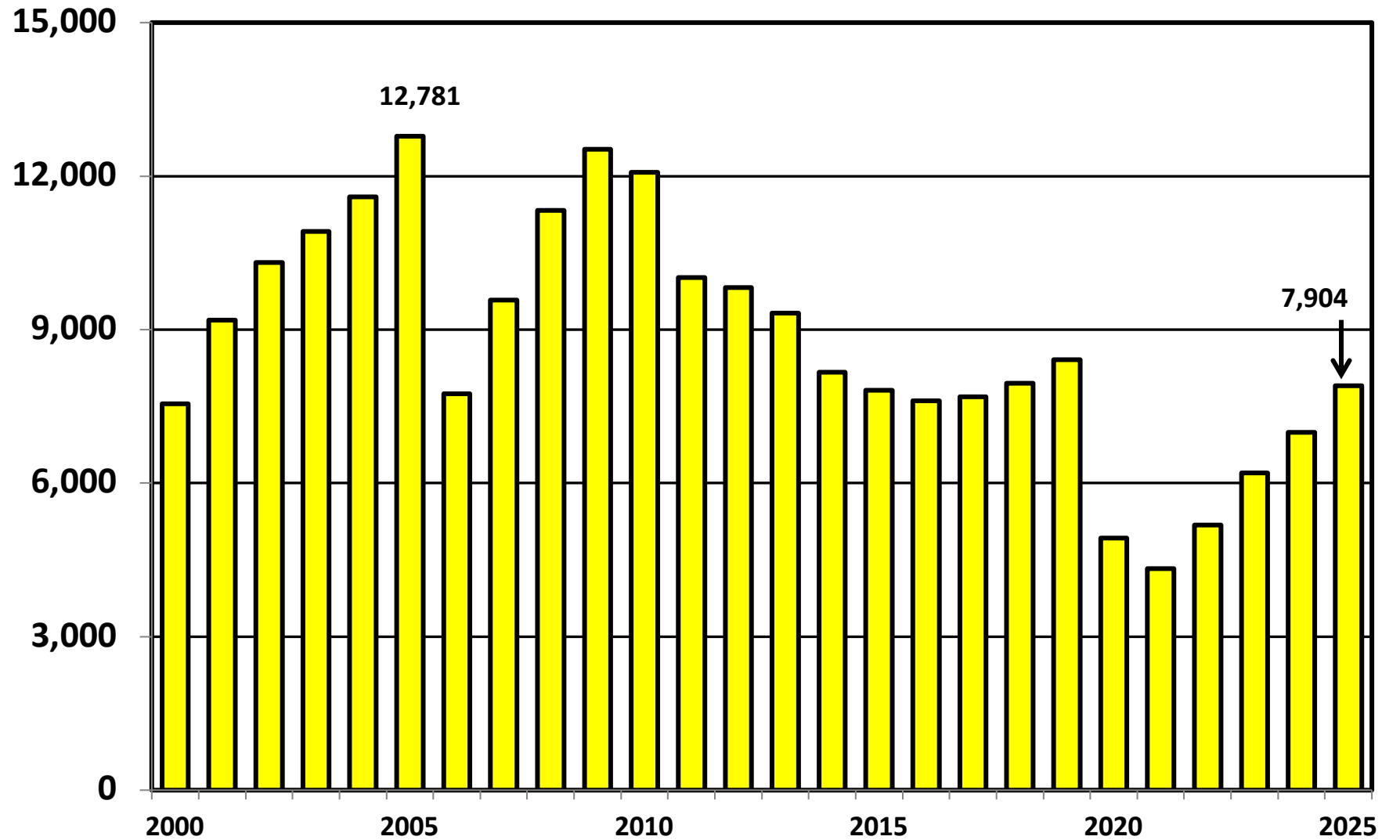


Prepared by the American  
Bankruptcy Institute  
[www.abi.org](http://www.abi.org)



AMERICAN  
BANKRUPTCY  
INSTITUTE

## Chapter 13 Cases Filed in Indiana 2000 - 2025



# Bankruptcy Filing Trends in Indiana: 2000-2025

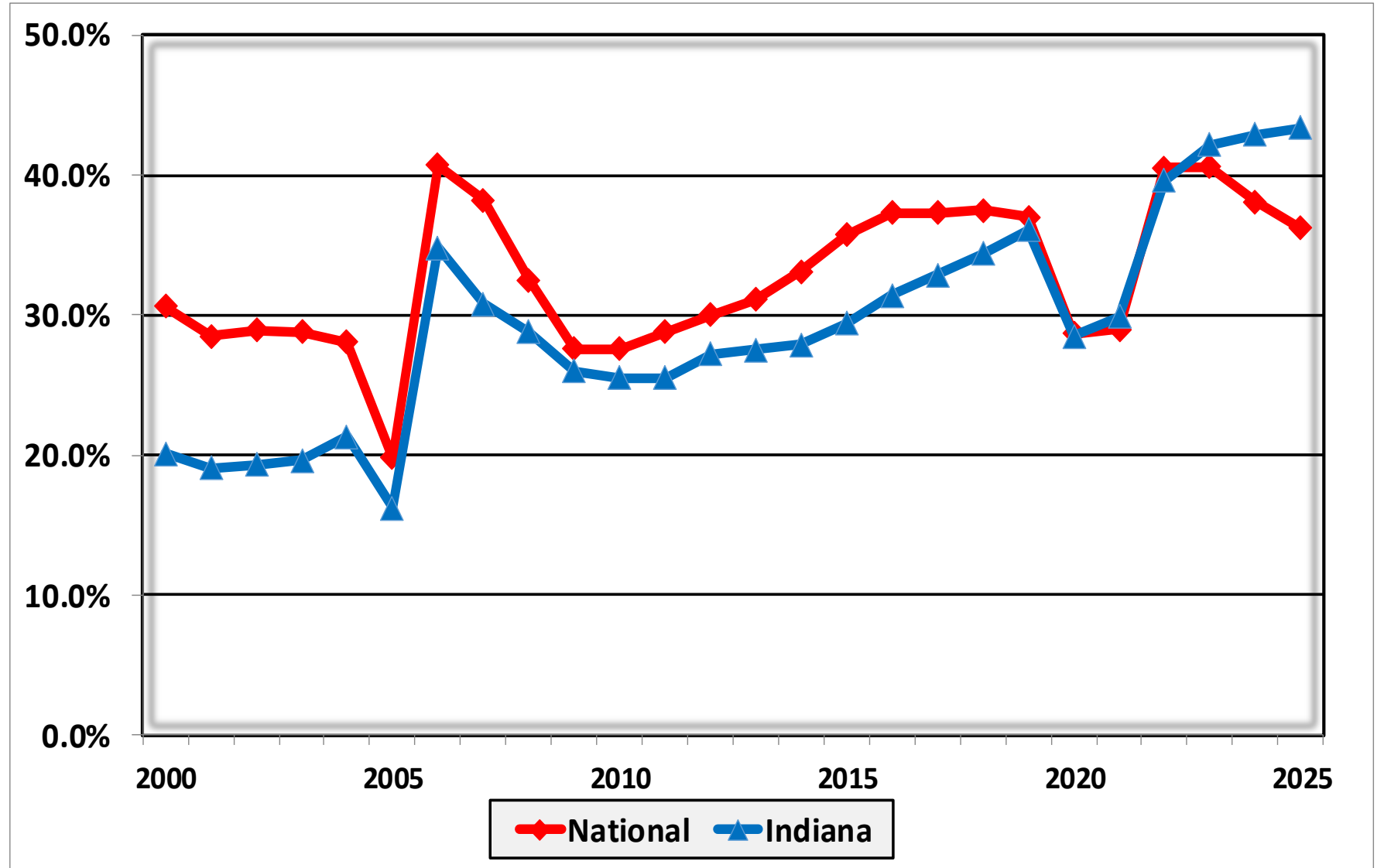


Prepared by the American Bankruptcy Institute  
[www.abi.org](http://www.abi.org)



AMERICAN BANKRUPTCY INSTITUTE

## Percent of Cases Filed as Chapter 13 Calendar Years 2000 - 2025



# Bankruptcy Filing Trends in Indiana: 2000-2025



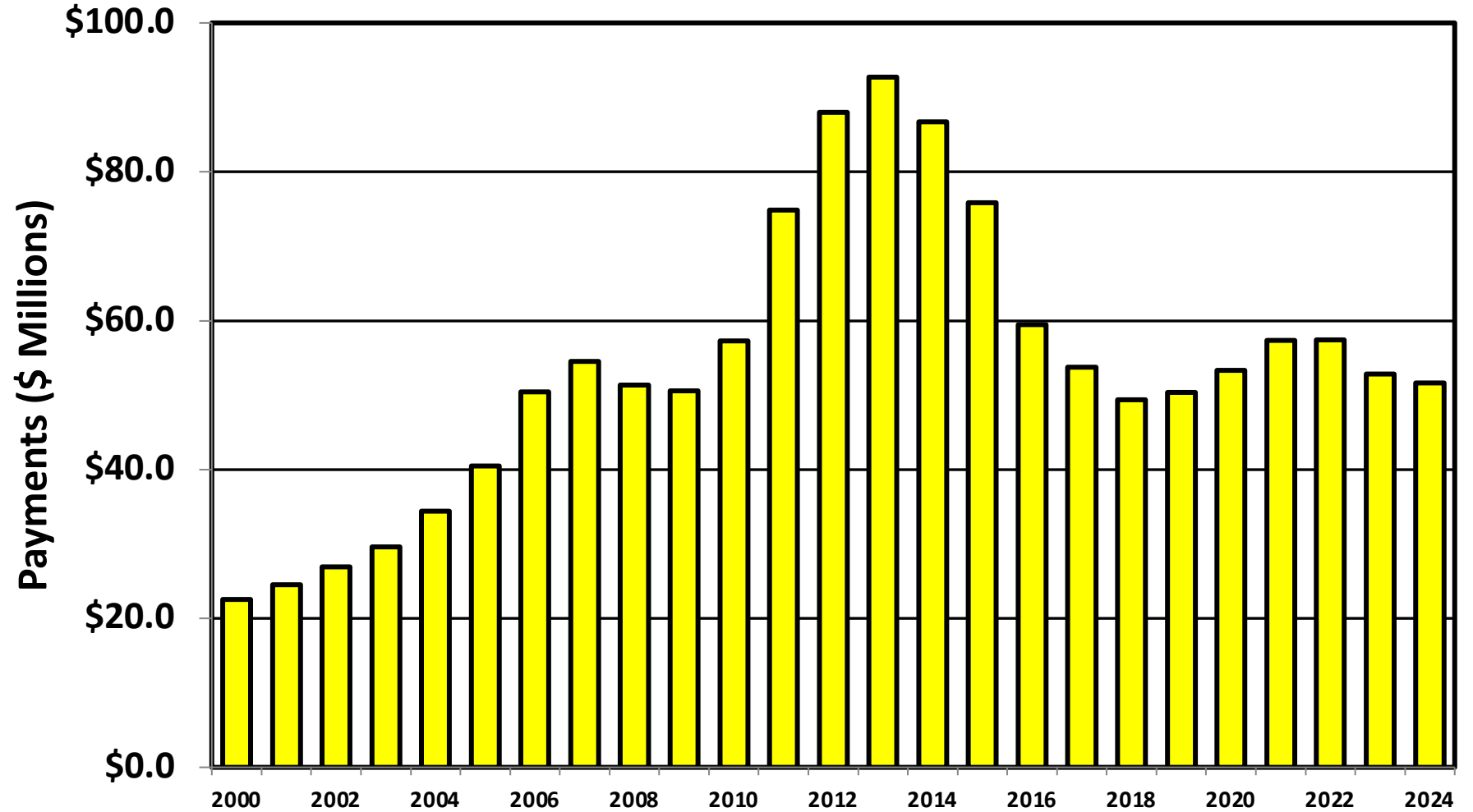
Prepared by the American  
Bankruptcy Institute  
[www.abi.org](http://www.abi.org)



AMERICAN  
BANKRUPTCY  
INSTITUTE

## Chapter 13 Cases in Indiana

Amount (in Millions) Paid to Unsecured Creditors  
Fiscal Years 2000 - 2024



Source: Executive Office for United States Trustees

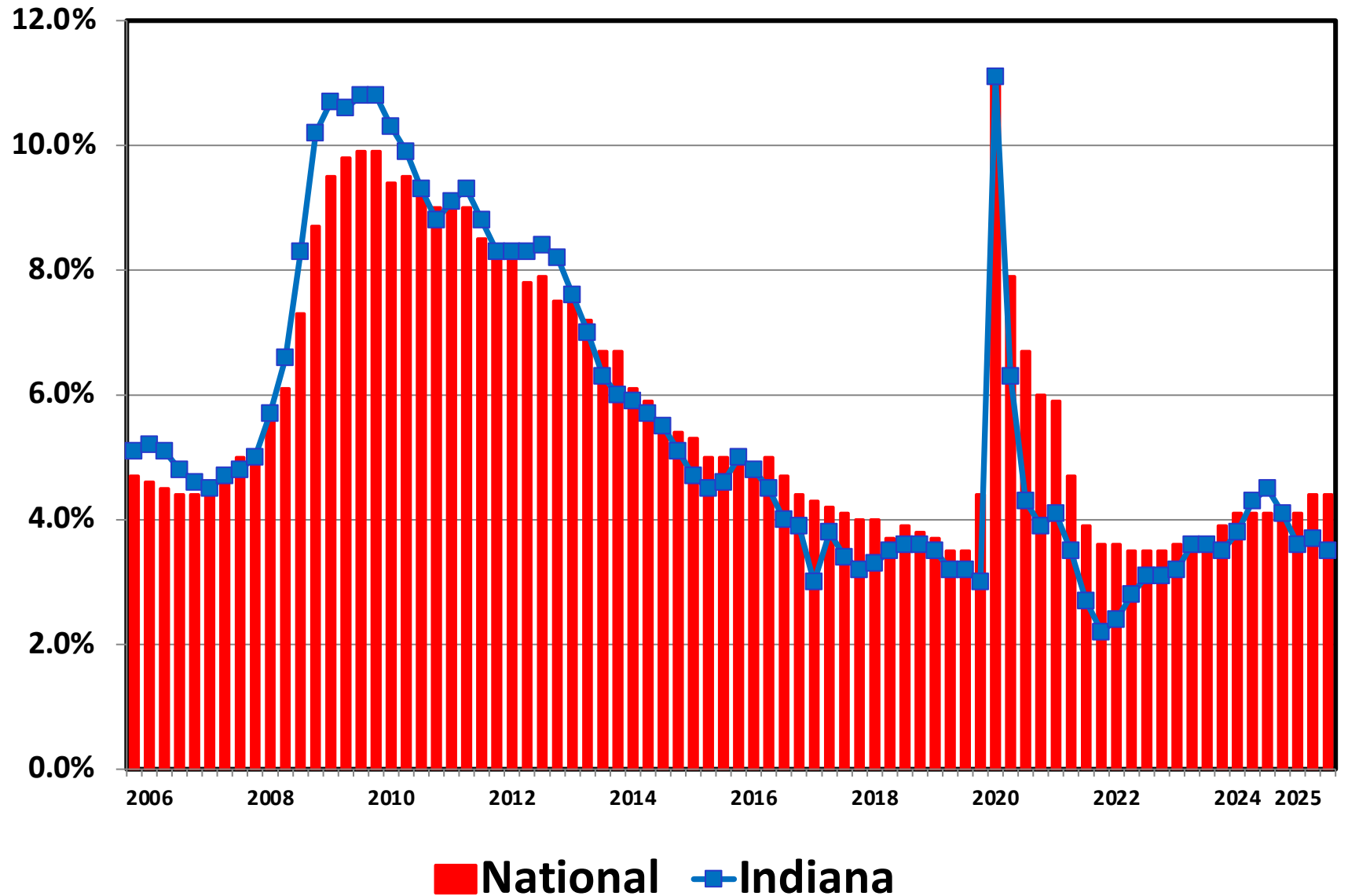
# Bankruptcy Filing Trends in Indiana: 2000-2025



Prepared by the American  
Bankruptcy Institute  
[www.abi.org](http://www.abi.org)



## Unemployment Rate By Quarter 2006 - 2025



Source: Bureau of Labor Statistics

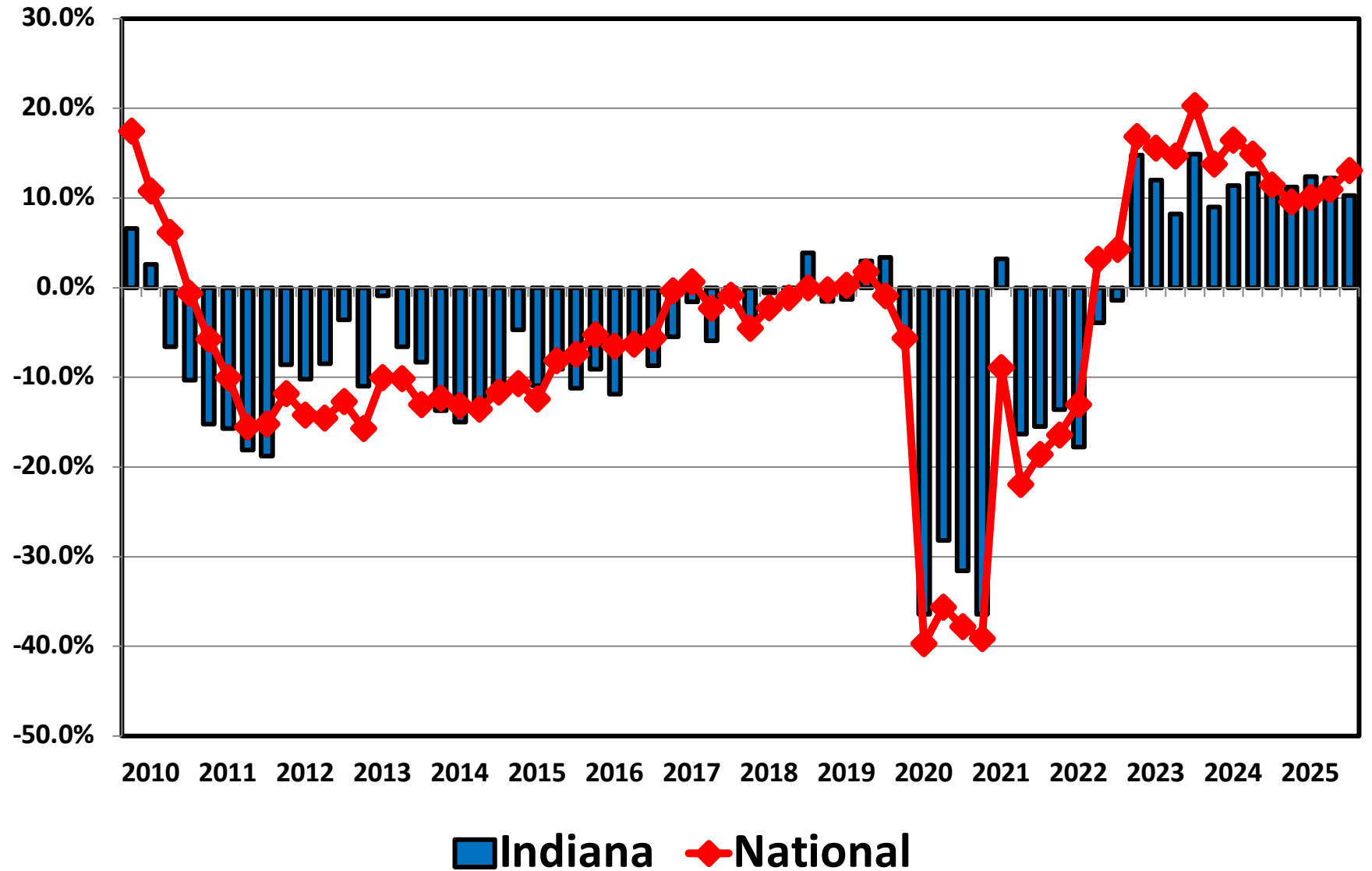
# Bankruptcy Filing Trends in Indiana: 2000-2025



Prepared by the American Bankruptcy Institute  
[www.abi.org](http://www.abi.org)



## Filing Trends By Quarter Indiana vs. National Average (Percent Change From Same Quarter One Year Prior)



# Bankruptcy Filing Trends in Indiana: 2000-2025

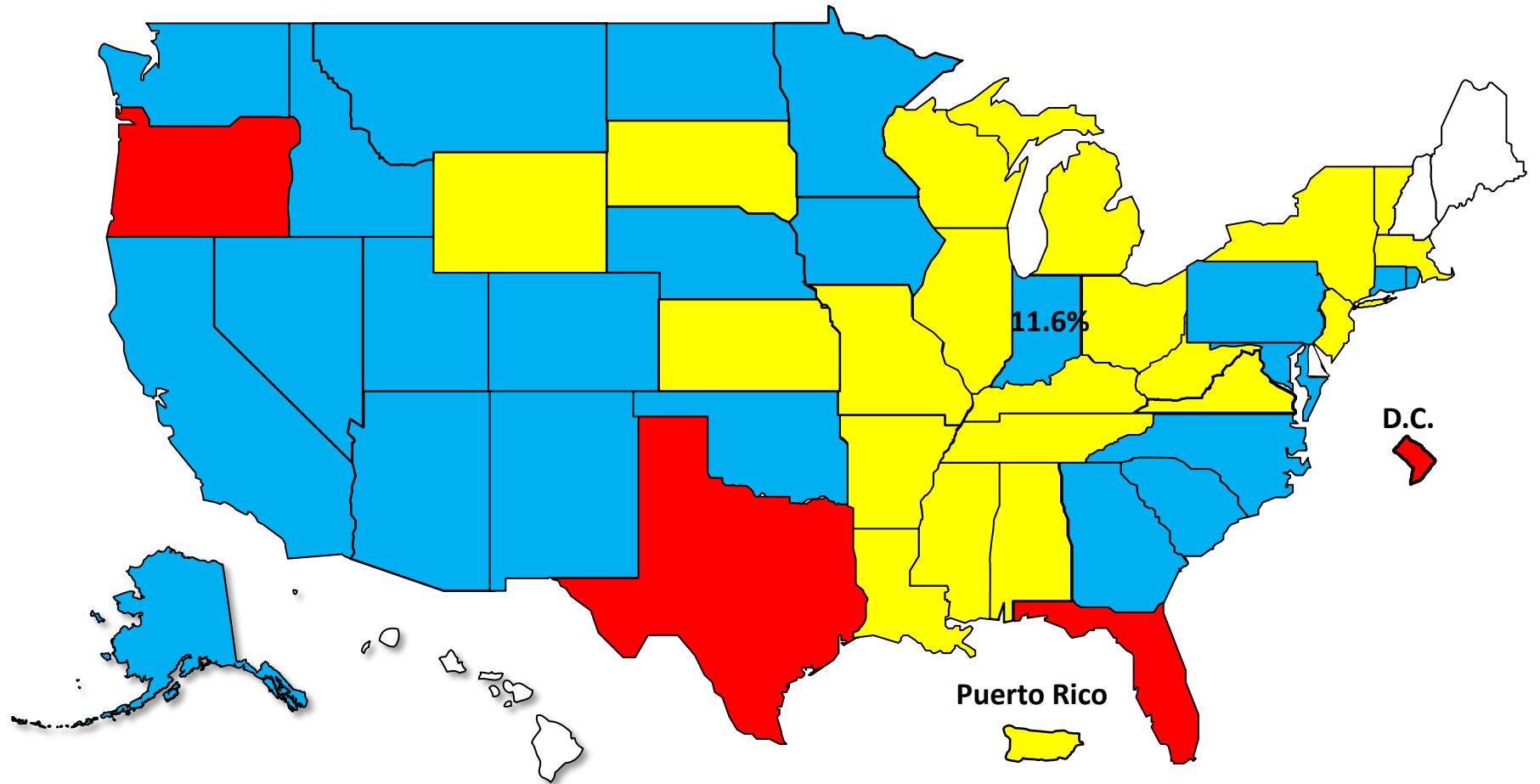


Prepared by the American Bankruptcy Institute  
[www.abi.org](http://www.abi.org)



## Bankruptcy Filing Trends Calendar Year 2025 vs. 2024 National Average = 11.0% Increase

**+**20% or More    **+**10.0% to 19.9%    **+**0% to 9.9%    Decline





# Bankruptcy Filing Trends in Indiana: 2000-2025



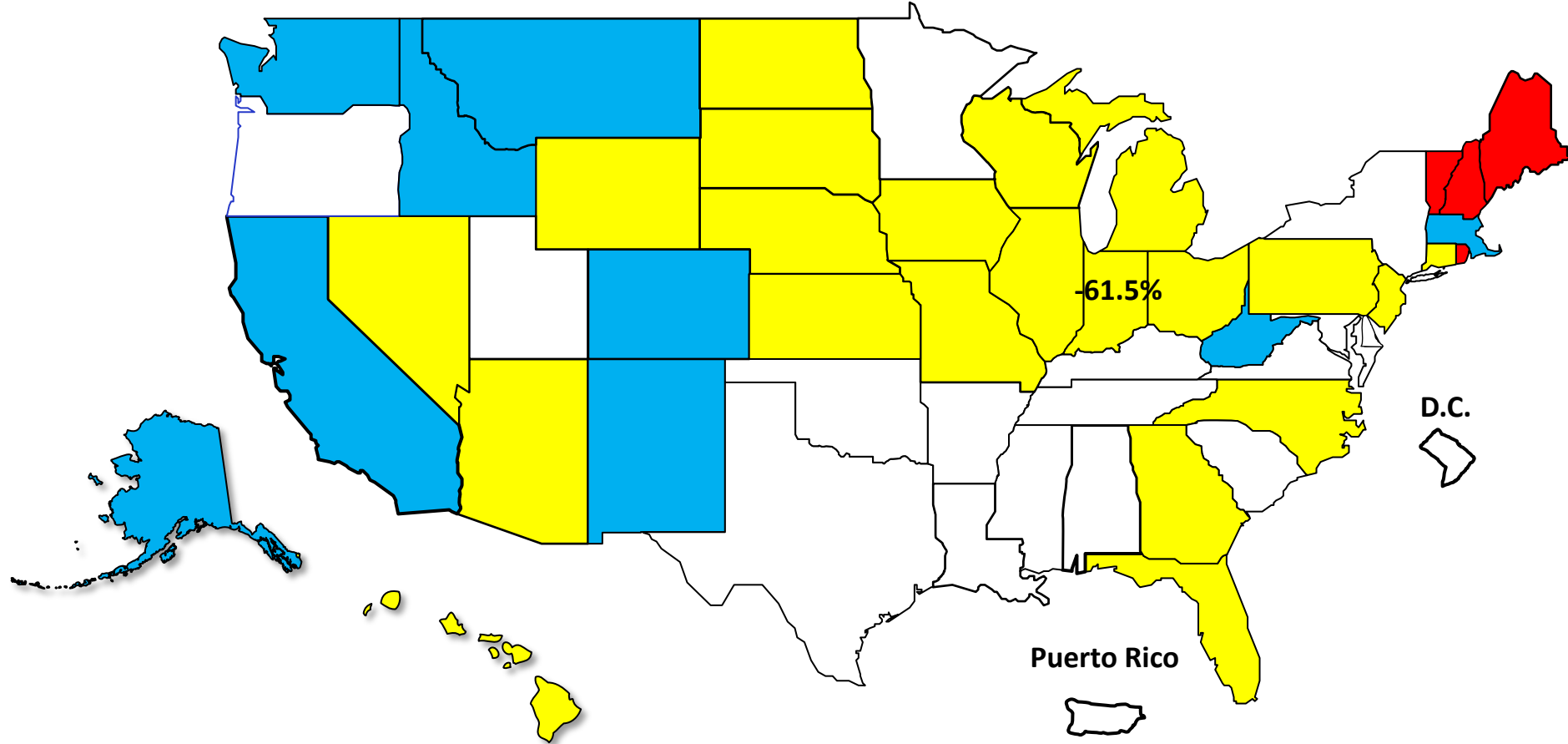
Prepared by the American Bankruptcy Institute  
[www.abi.org](http://www.abi.org)



AMERICAN BANKRUPTCY INSTITUTE

## Percent Change in Total Filings Calendar Year 2025 Compared to 2010 (National Average = 63.9% Decrease)

### Amount of Decrease





# AMERICAN BANKRUPTCY INSTITUTE

Prepared by the American Bankruptcy Institute. [www.abi.org](http://www.abi.org)