

# Bankruptcy Filing Trends in Idaho: 2000-2025



Prepared by the American Bankruptcy Institute. [www.abi.org](http://www.abi.org)



# Bankruptcy Filing Trends in Idaho: 2000-2025



Prepared by the American Bankruptcy Institute  
[www.abi.org](http://www.abi.org)



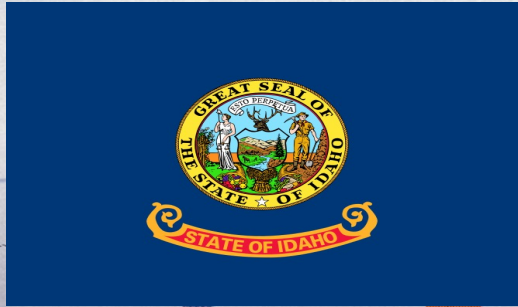
AMERICAN BANKRUPTCY INSTITUTE



# Idaho

State at a Glance		
	Idaho	National
Population (7/1/2025)	2,029,733	341,784,857
- Change since April 2020	10.4%	3.1%
- Foreign Born	5.9%	14.1%
Size (Square Miles)	82,645	3,533,038
Median Household Income	\$77,800	\$80,734
Persons per Household	2.64	2.53
Per Capita Income	\$38,952	\$44,673
Median Home Value	\$418,600	\$332,700
Homeownership Rate	72.1%	65.2%
High School Graduate (or Higher)	91.9%	89.6%
College Graduate (or Higher)	31.8%	35.7%
Disabled	10.1%	9.3%
No Health Insurance	11.0%	9.6%
In Poverty	10.5%	10.6%
Source: U.S. Census Bureau January 2026		

# Bankruptcy Filing Trends in Idaho: 2000-2025



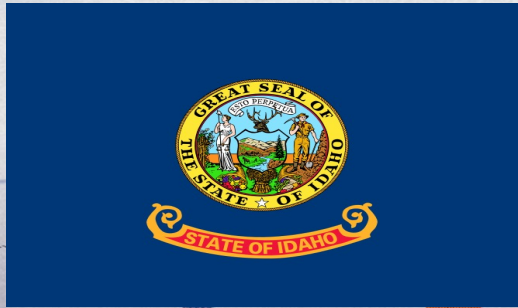
Prepared by the American  
Bankruptcy Institute  
[www.abi.org](http://www.abi.org)



AMERICAN  
BANKRUPTCY  
INSTITUTE

Bankruptcy Filings in Idaho Calendar Years 2000 - 2025					
Year	Total	Chapter 7	Chapter 11	Chapter 13	Other Cases*
2025	2,474	2,279	14	180	1
2024	2,145	1,879	28	237	1
2023	1,714	1,504	14	194	2
2022	1,521	1,326	15	179	1
2021	2,000	1,814	11	173	2
2020	2,772	2,498	24	240	10
2019	3,665	3,285	15	355	10
2018	3,724	3,300	24	394	6
2017	3,808	3,348	22	432	6
2016	3,840	3,404	14	416	6
2015	3,970	3,544	18	404	4
2014	4,742	4,246	19	471	6
2013	5,574	5,067	24	478	5
2012	6,322	5,612	33	665	12
2011	7,666	6,722	54	875	15
2010	8,355	7,284	62	997	12
2009	7,704	6,789	51	854	10
2008	5,300	4,450	26	815	9
2007	3,838	3,074	20	739	5
2006	2,931	2,335	15	570	11
2005	11,967	10,642	18	1,298	9
2004	9,488	8,208	28	1,251	1
2003	9,660	8,368	44	1,225	23
2002	8,913	7,632	53	1,214	14
2001	8,265	7,012	81	1,163	9
2000	7,119	5,721	47	1,327	24
*Chapters 9, 12 and 15					

# Bankruptcy Filing Trends in Idaho: 2000-2025



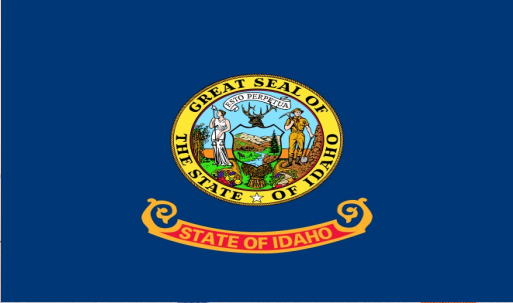
Prepared by the American  
Bankruptcy Institute  
[www.abi.org](http://www.abi.org)



AMERICAN  
BANKRUPTCY  
INSTITUTE

Business Bankruptcy Cases Filed - Idaho Years Ended December 31, 2000 - 2025					
CALENDAR YEAR	TOTAL FILINGS	CHAPTER 7	CHAPTER 11	CHAPTER 13	OTHER CASES*
2025	93	76	12	4	1
2024	91	61	25	4	1
2023	47	31	12	2	2
2022	42	28	12	1	1
2021	51	38	10	1	2
2020	83	50	22	1	10
2019	85	61	10	4	10
2018	94	67	18	3	6
2017	117	89	18	4	6
2016	102	80	12	4	6
2015	129	102	14	9	4
2014	130	101	17	6	6
2013	184	149	21	9	5
2012	230	174	26	18	12
2011	305	239	46	5	15
2010	351	276	52	11	12
2009	381	310	45	16	10
2008	215	162	20	24	9
2007	116	82	17	12	5
2006	56	28	12	5	11
2005	141	96	14	22	9
2004	160	109	24	26	1
2003	225	134	36	32	23
2002	260	152	44	50	14
2001	303	174	74	46	9
2000	269	144	37	64	24
* Chapters 9, 12 and 15					

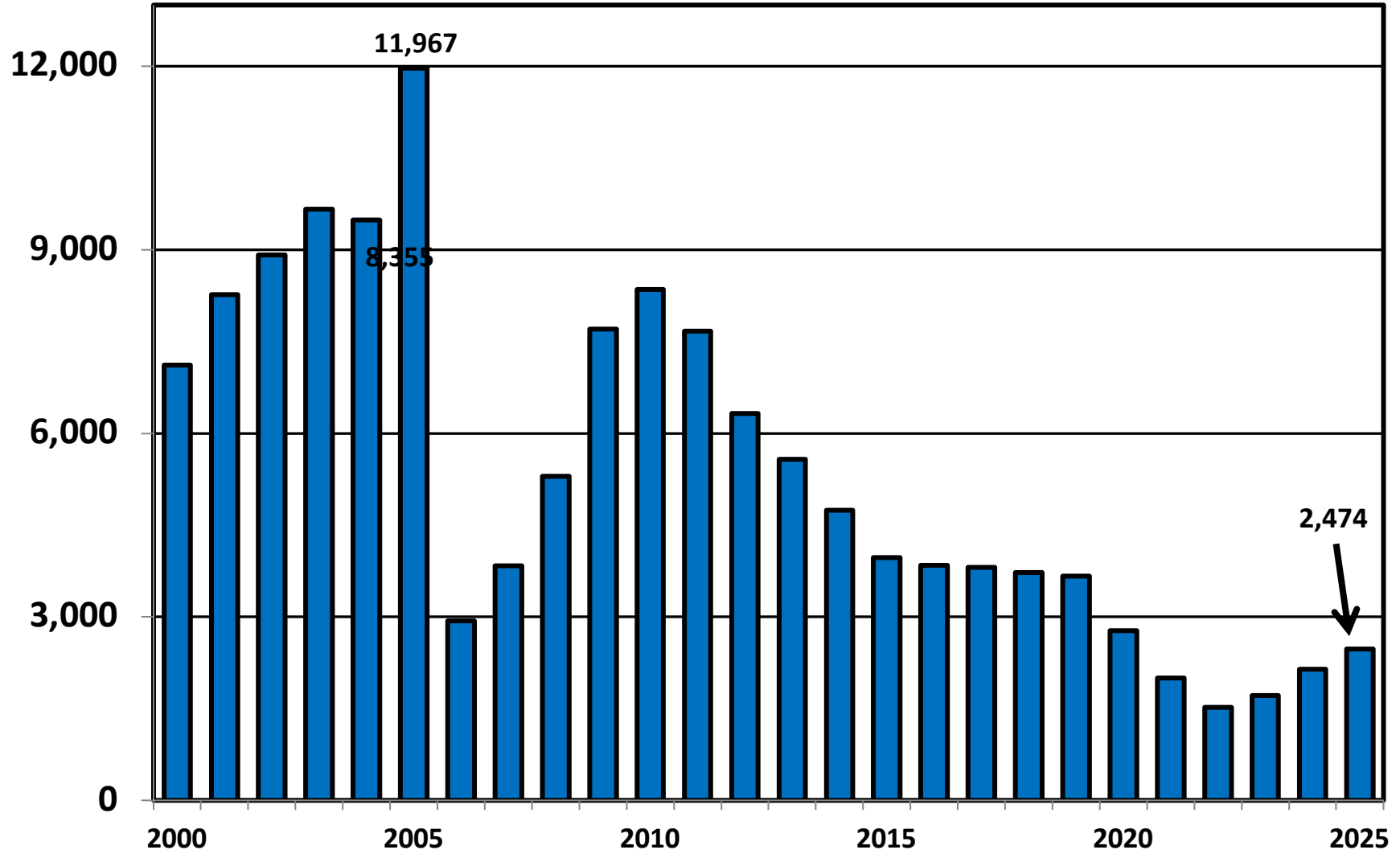
# Bankruptcy Filing Trends in Idaho: 2000-2025



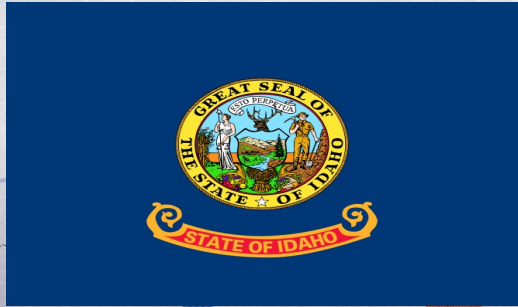
Prepared by the American Bankruptcy Institute  
[www.abi.org](http://www.abi.org)



## District of Idaho Total Bankruptcy Cases Filed 2000 - 2025



# Bankruptcy Filing Trends in Idaho: 2000-2025



Prepared by the American Bankruptcy Institute  
[www.abi.org](http://www.abi.org)



## Total Filings Relative to Population 2000 - 2025



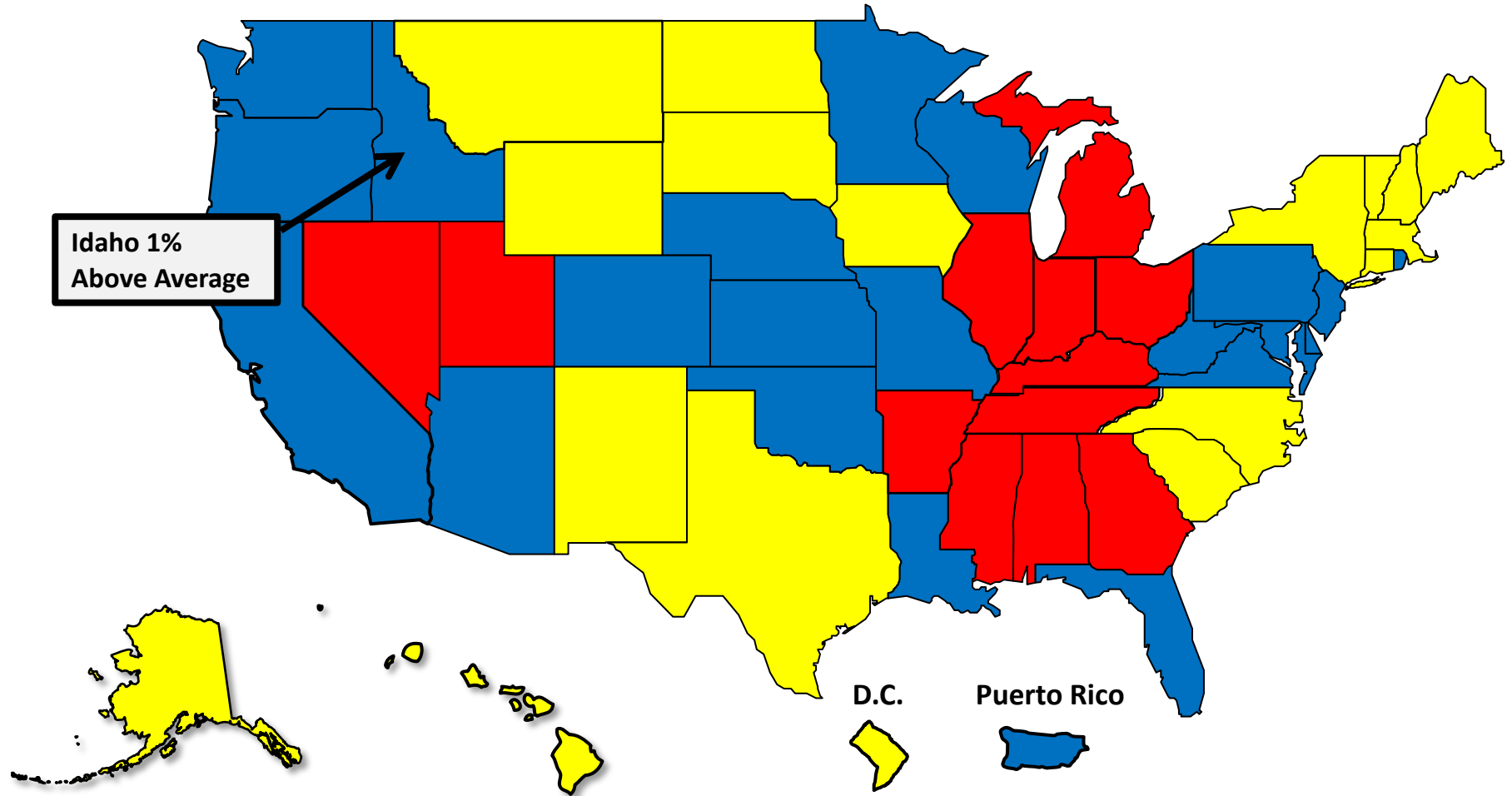
More than 25% Above Average



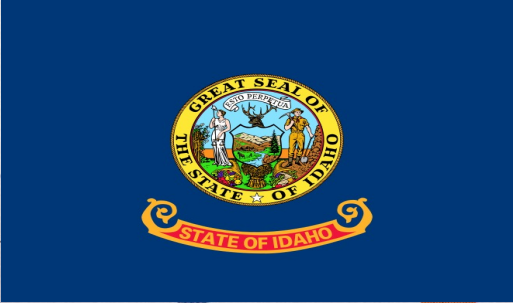
Within 25% of Average



More than 25% Below Average



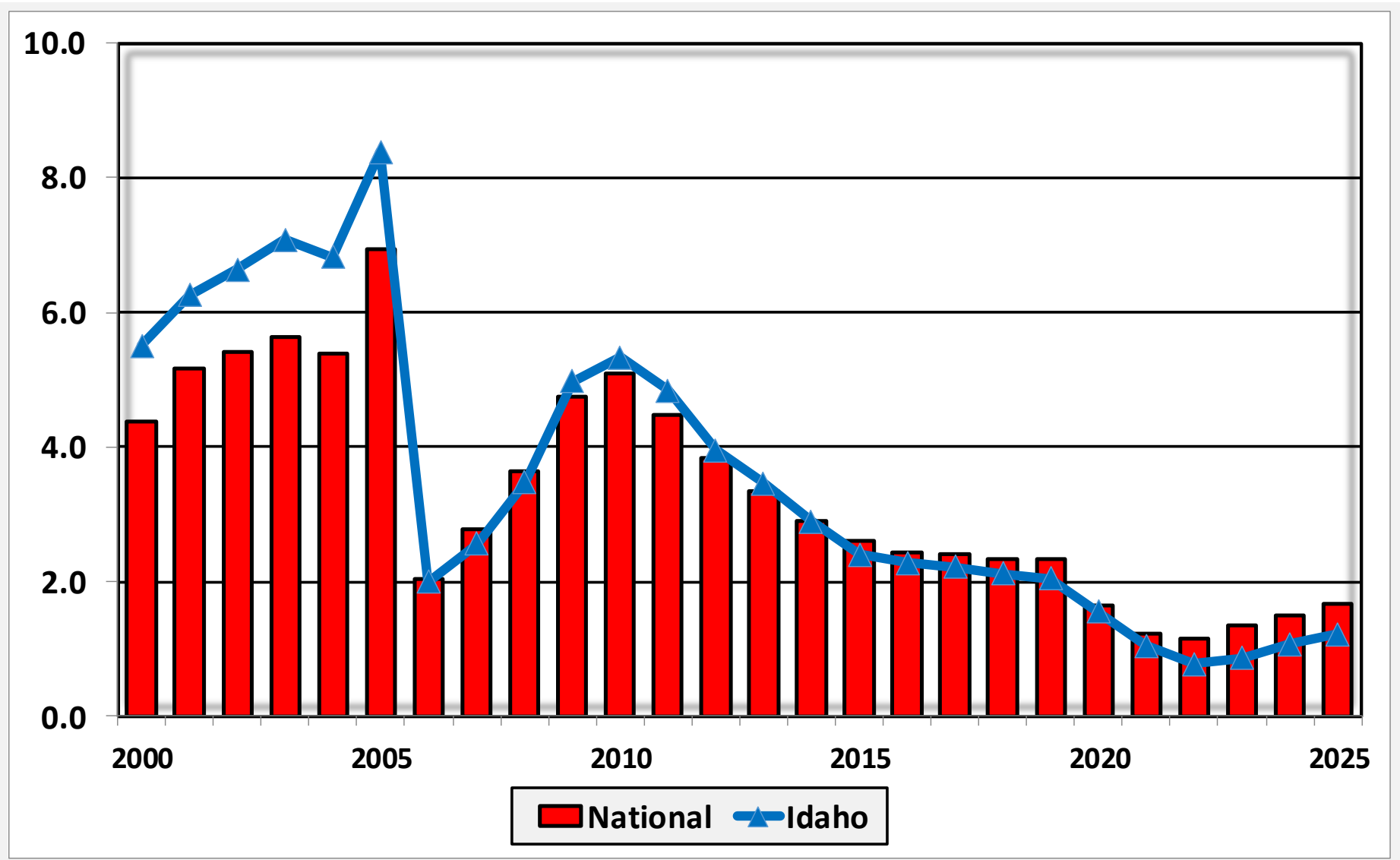
# Bankruptcy Filing Trends in Idaho: 2000-2025



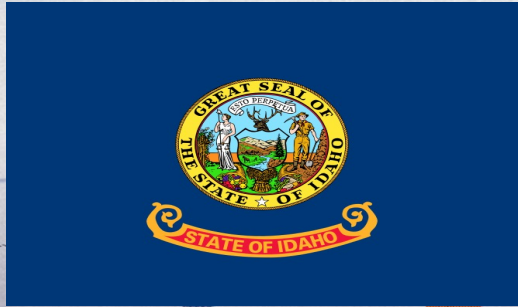
Prepared by the American Bankruptcy Institute  
[www.abi.org](http://www.abi.org)



## Bankruptcy Filings per 1,000 Population Idaho vs. National Average 2000 - 2025



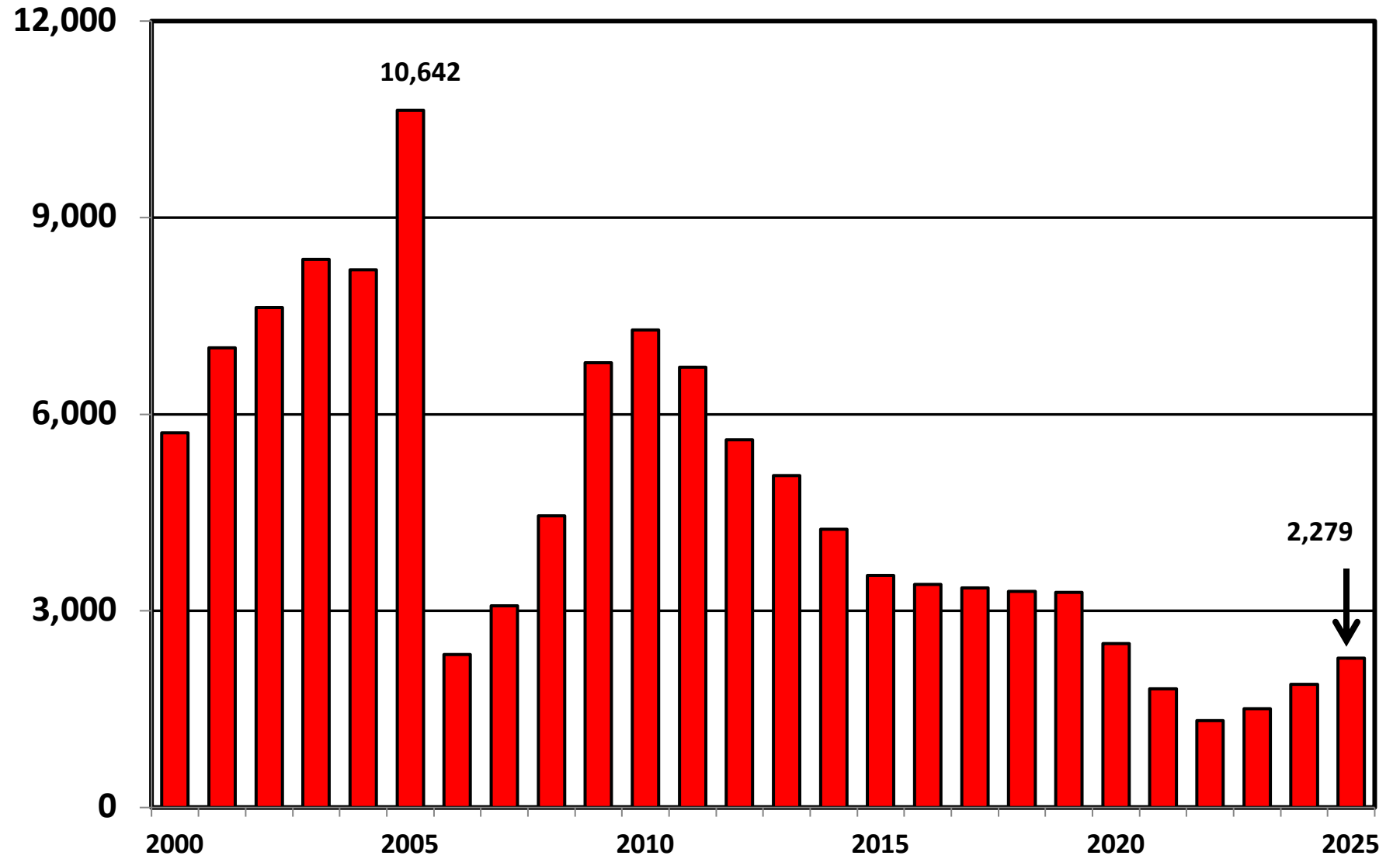
# Bankruptcy Filing Trends in Idaho: 2000-2025



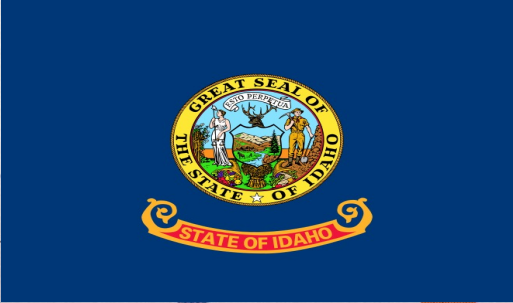
Prepared by the American Bankruptcy Institute  
[www.abi.org](http://www.abi.org)



## District of Idaho Chapter 7 Cases Filed 2000 - 2025



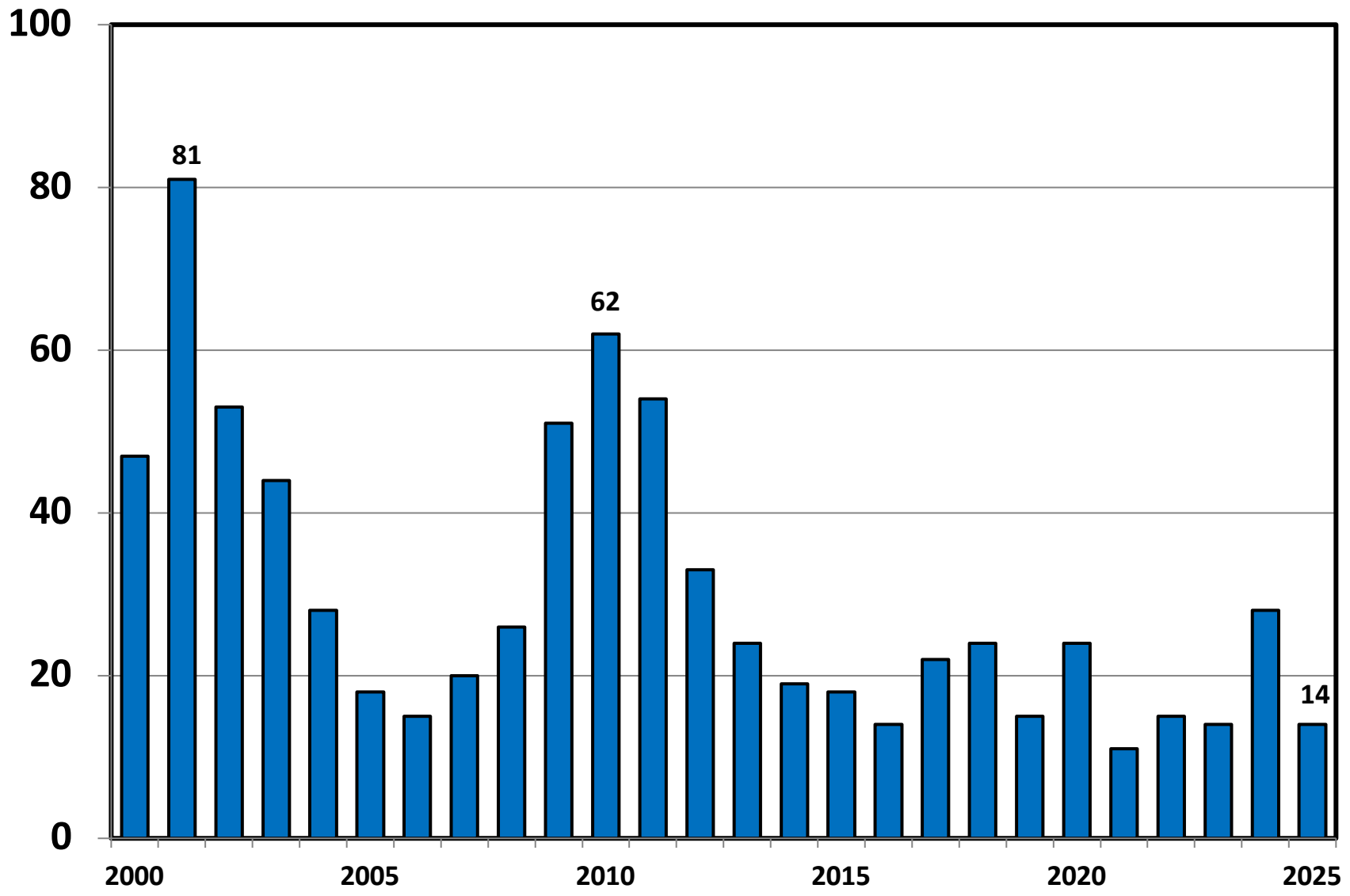
# Bankruptcy Filing Trends in Idaho: 2000-2025



Prepared by the American Bankruptcy Institute  
[www.abi.org](http://www.abi.org)



## Chapter 11 Cases Filed in Idaho 2000 - 2025



# Bankruptcy Filing Trends in Idaho: 2000-2025

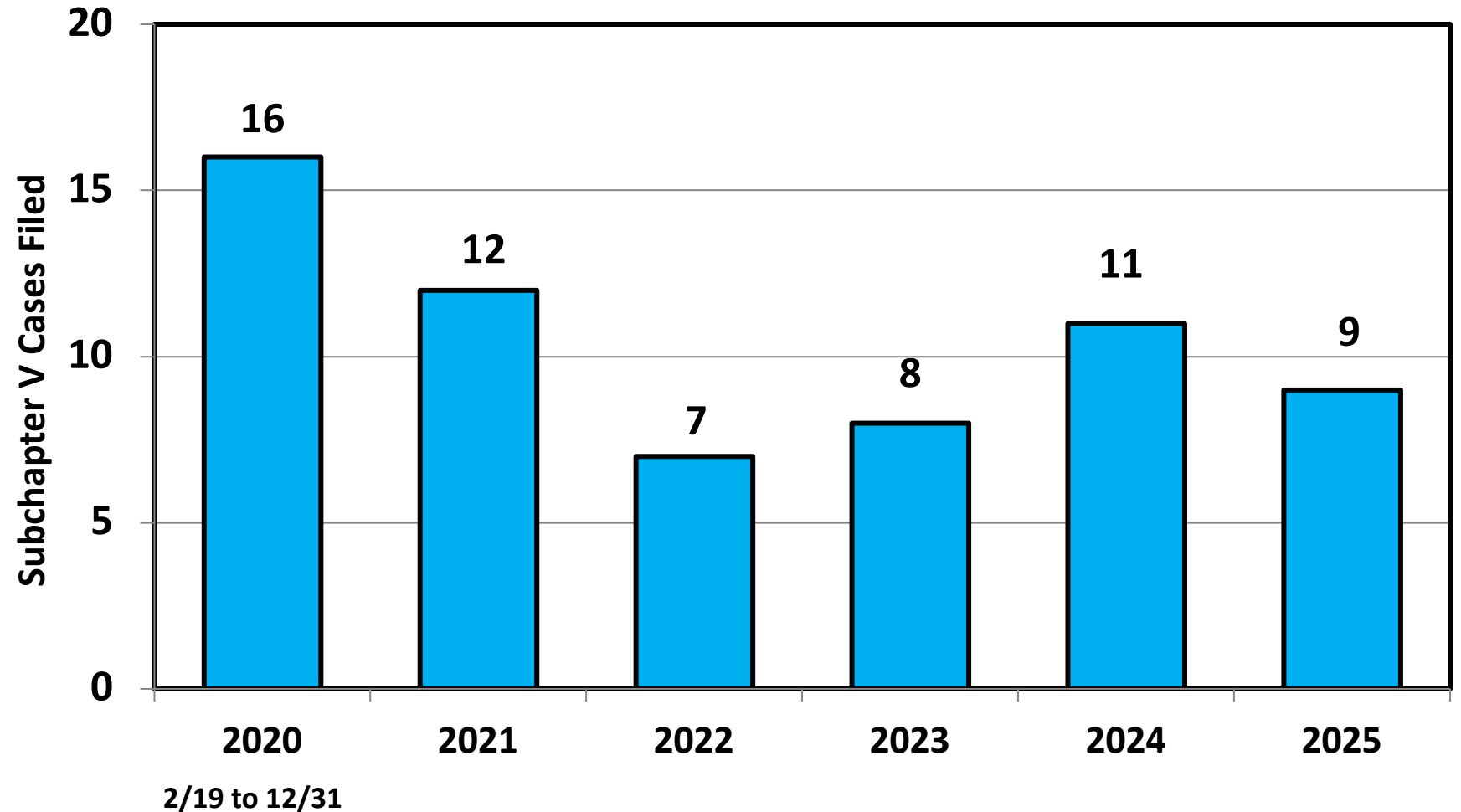


Prepared by the American  
Bankruptcy Institute  
[www.abi.org](http://www.abi.org)



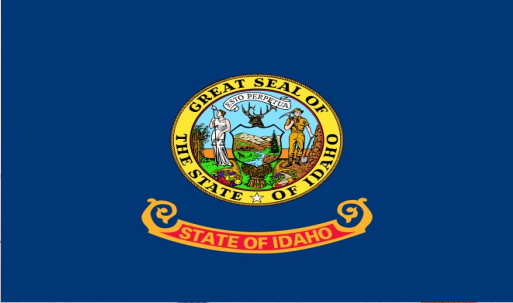
AMERICAN  
BANKRUPTCY  
INSTITUTE

## Subchapter V Cases Filed in Idaho Calendar Years 2020 - 2025



Source: ABI review of PACER records

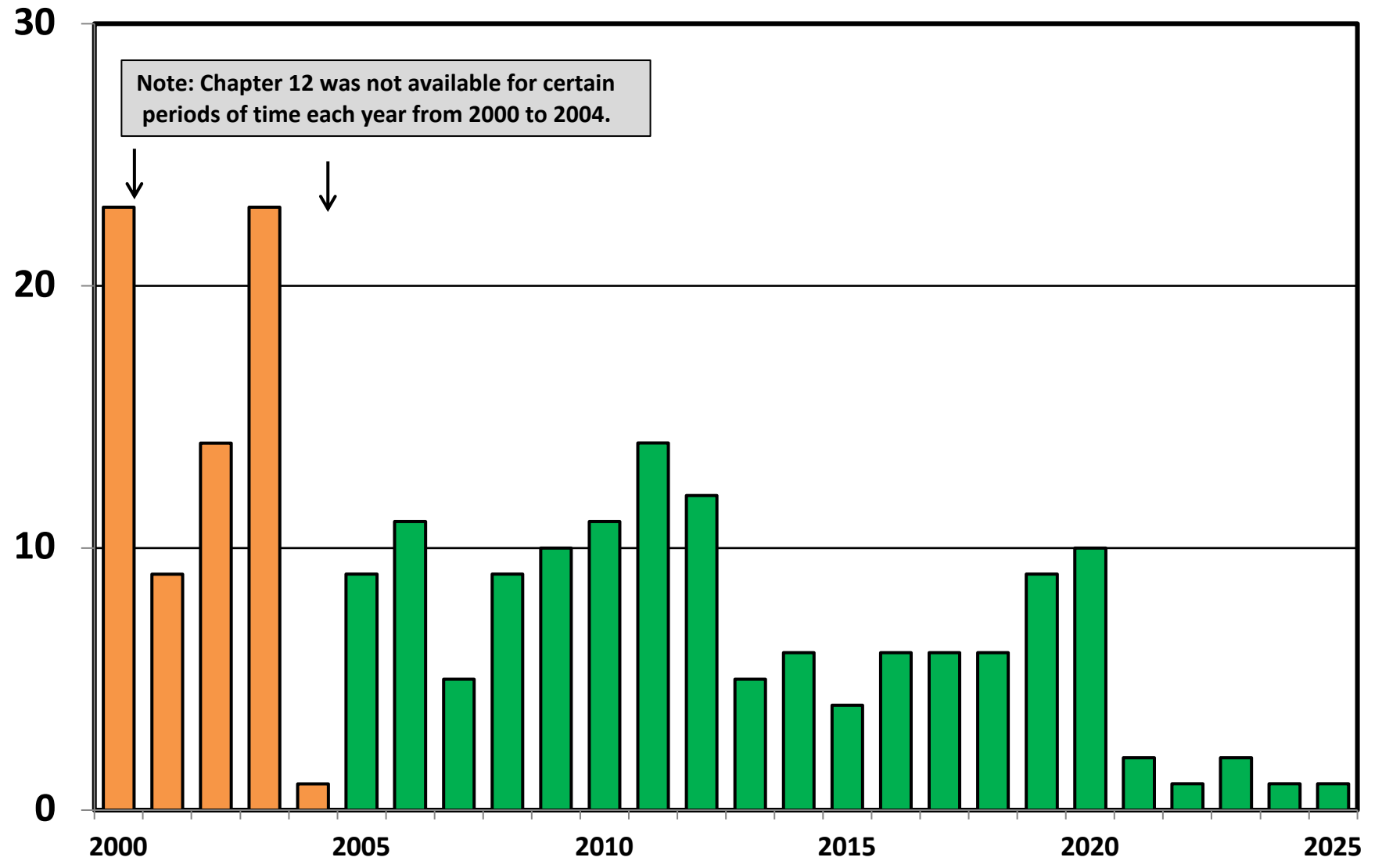
# Bankruptcy Filing Trends in Idaho: 2000-2025



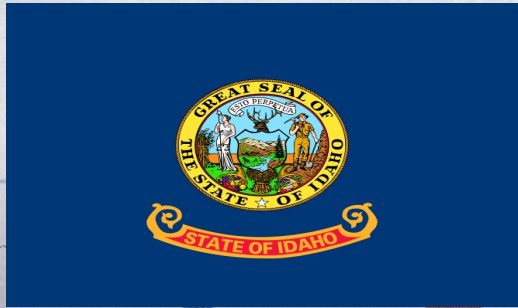
Prepared by the American Bankruptcy Institute  
[www.abi.org](http://www.abi.org)



## Chapter 12 Cases Filed in Idaho 2000 - 2025



# Bankruptcy Filing Trends in Idaho: 2000-2025

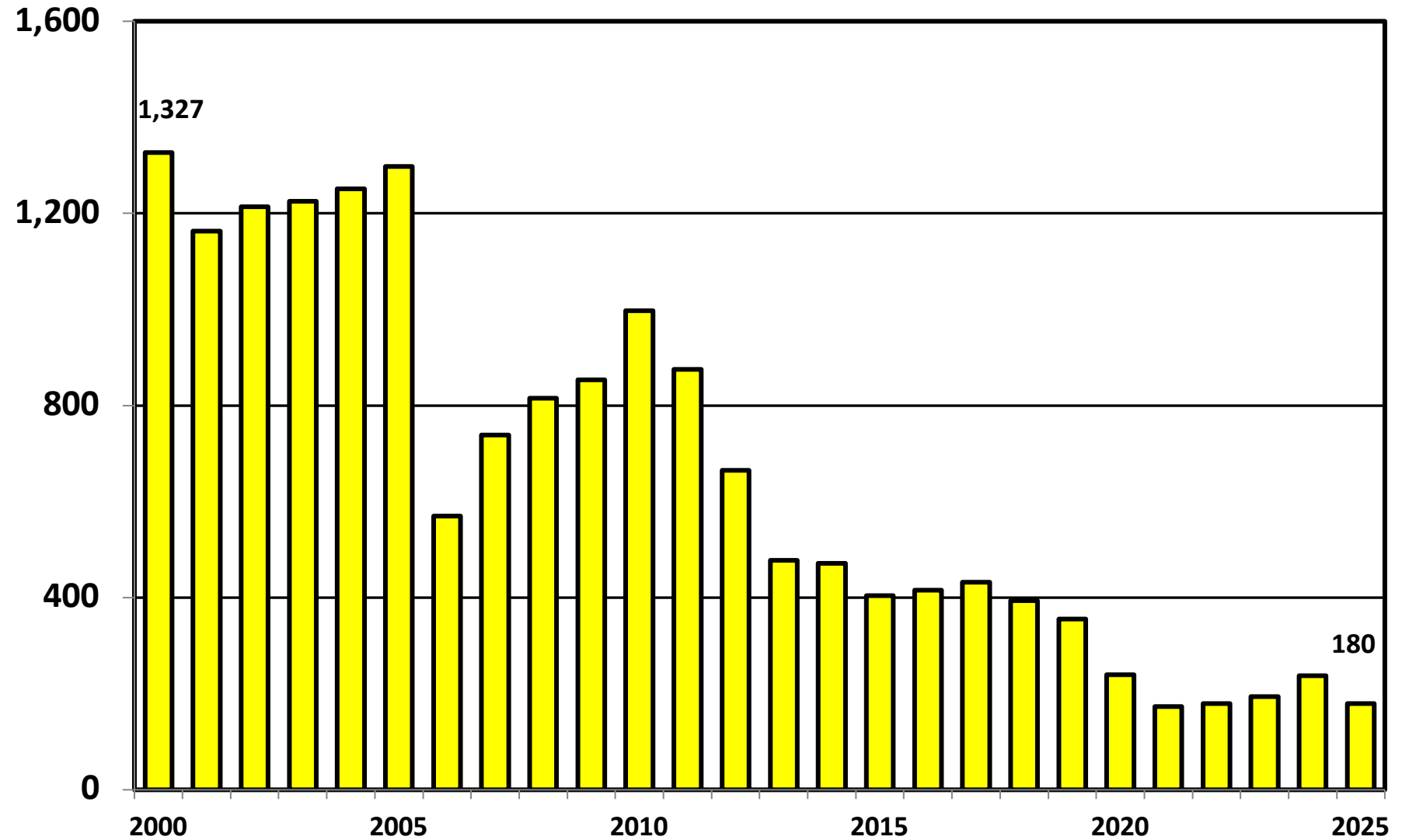


Prepared by the American  
Bankruptcy Institute  
[www.abi.org](http://www.abi.org)

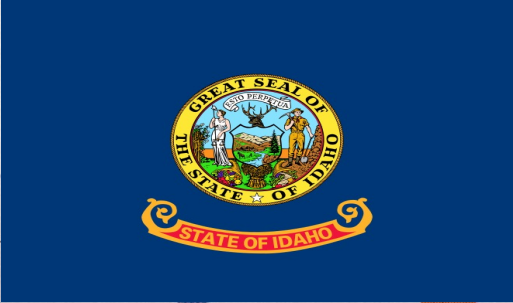


AMERICAN  
BANKRUPTCY  
INSTITUTE

## District of Idaho Chapter 13 Cases Filed 2000 - 2025



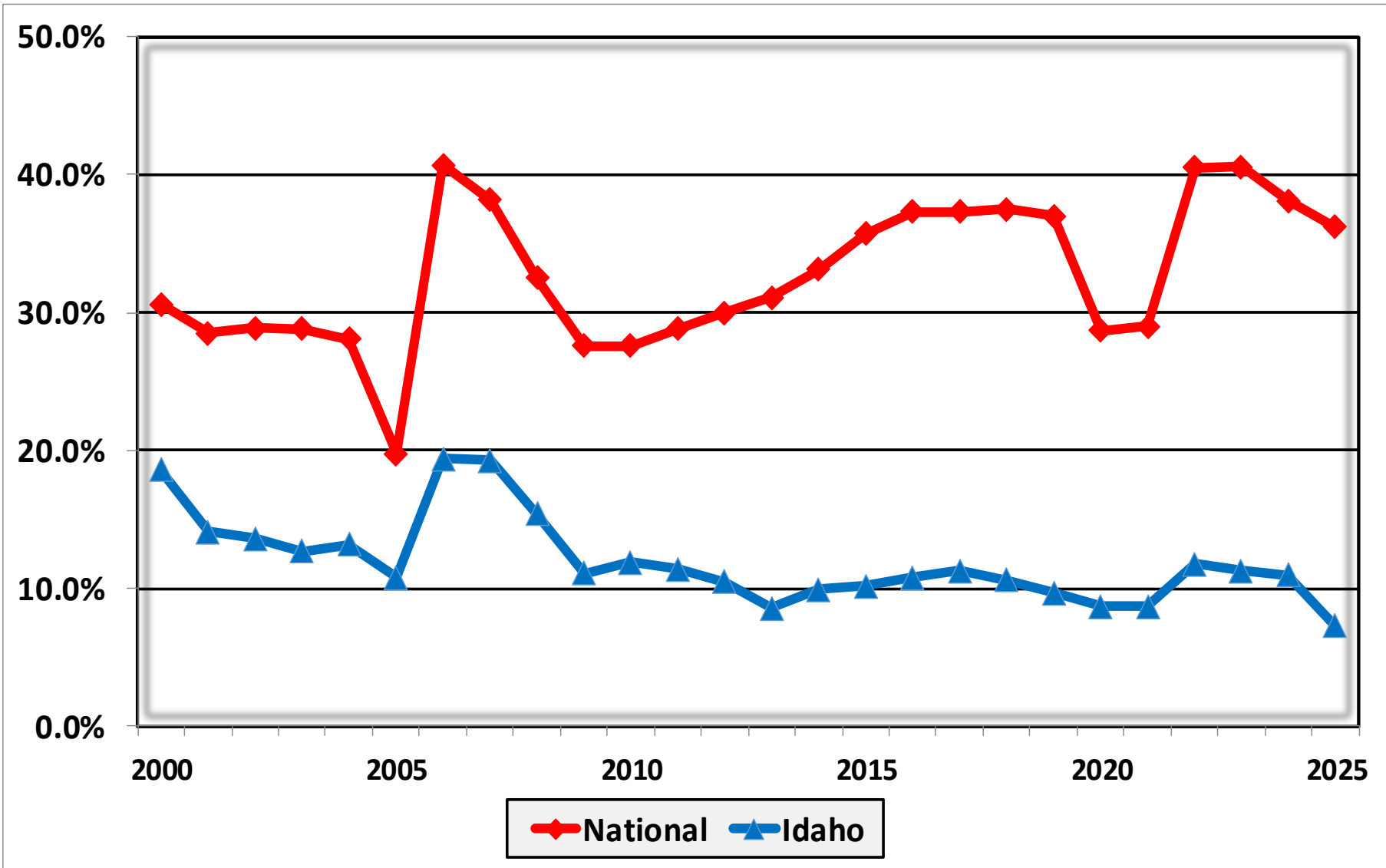
# Bankruptcy Filing Trends in Idaho: 2000-2025



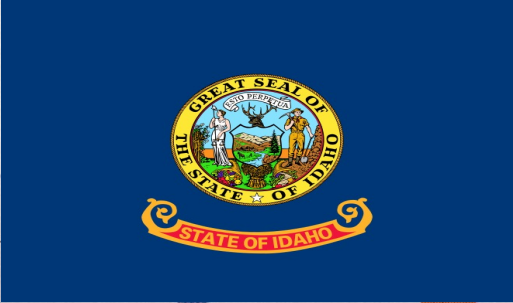
Prepared by the American Bankruptcy Institute  
[www.abi.org](http://www.abi.org)



## Percent of Cases Filed as Chapter 13 Calendar Years 2000 - 2025



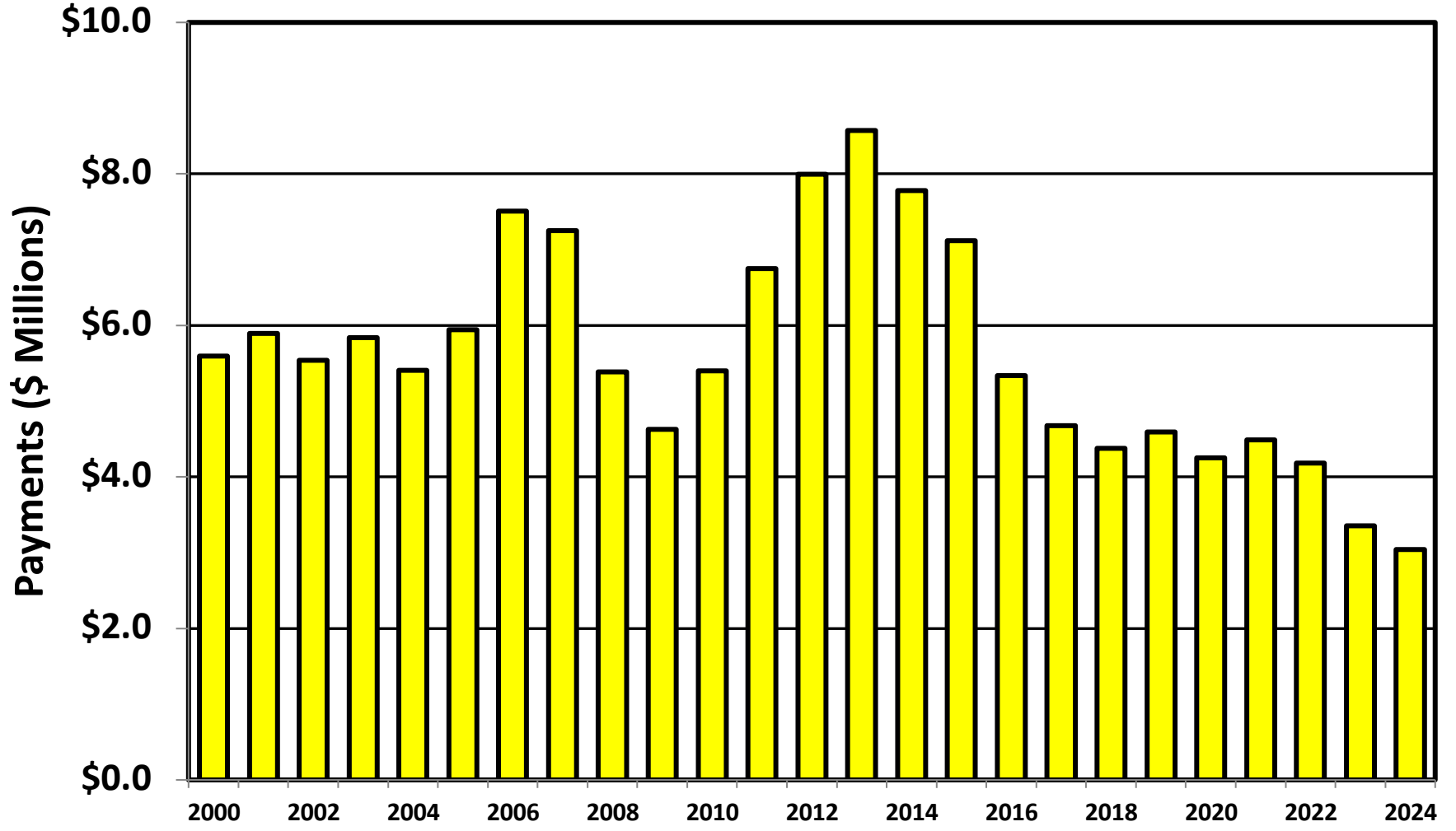
# Bankruptcy Filing Trends in Idaho: 2000-2025



Prepared by the American  
Bankruptcy Institute  
[www.abi.org](http://www.abi.org)

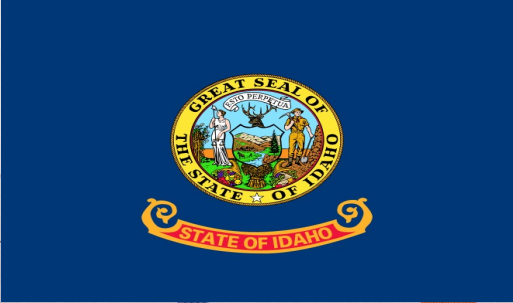


## Chapter 13 Cases in Idaho Amount (in Millions) Paid to Unsecured Creditors Fiscal Years 2000 - 2024



Source: Executive Office for United States Trustees

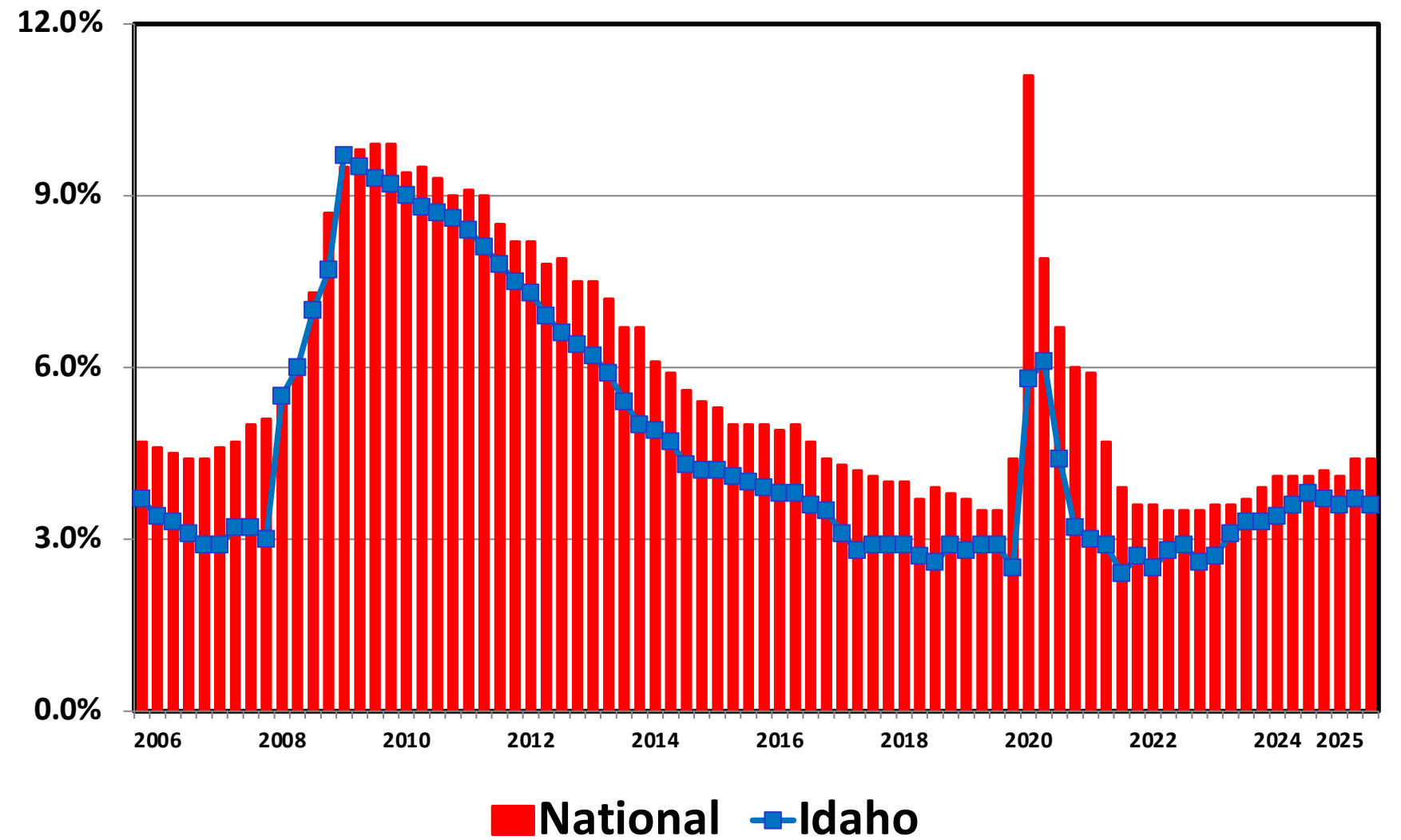
# Bankruptcy Filing Trends in Idaho: 2000-2025



Prepared by the American Bankruptcy Institute  
[www.abi.org](http://www.abi.org)



## Unemployment Rate By Quarter 2006 - 2025



Source: Bureau of Labor Statistics

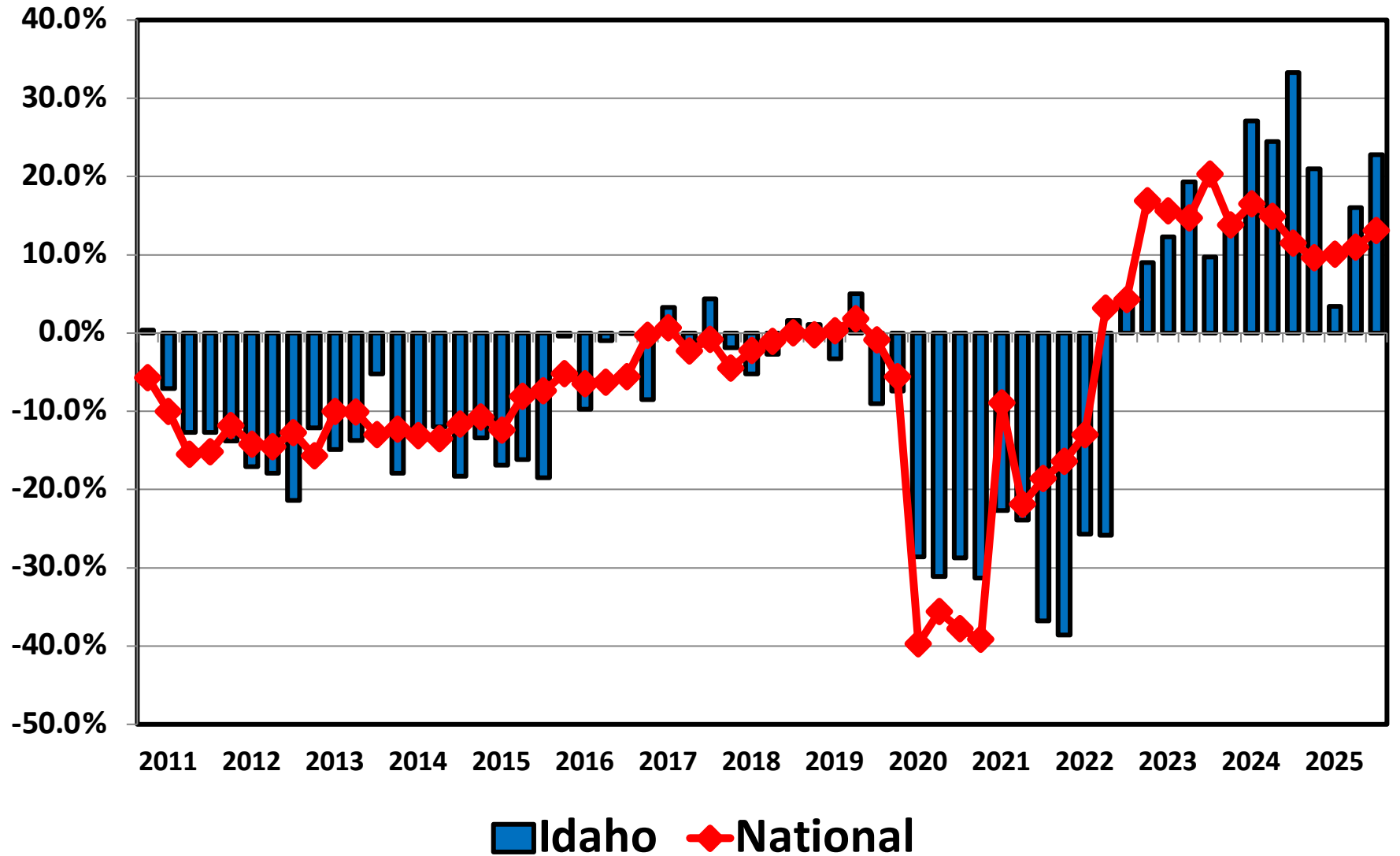
# Bankruptcy Filing Trends in Idaho: 2000-2025



Prepared by the American Bankruptcy Institute  
[www.abi.org](http://www.abi.org)

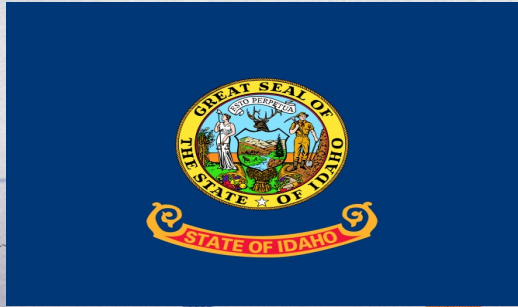


## Filing Trends By Quarter Idaho vs. National Average (Percent Change From Same Quarter One Year Prior)





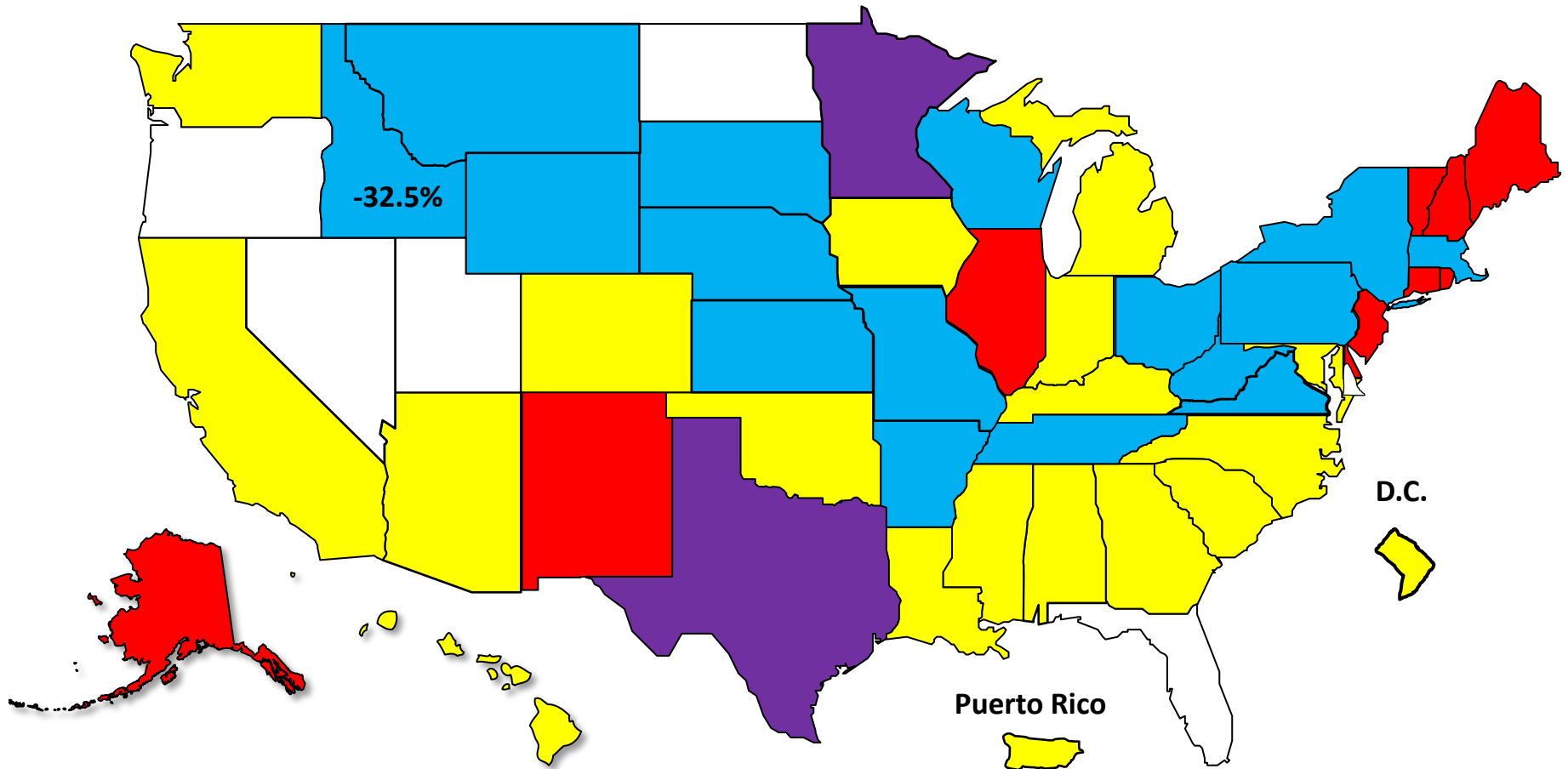
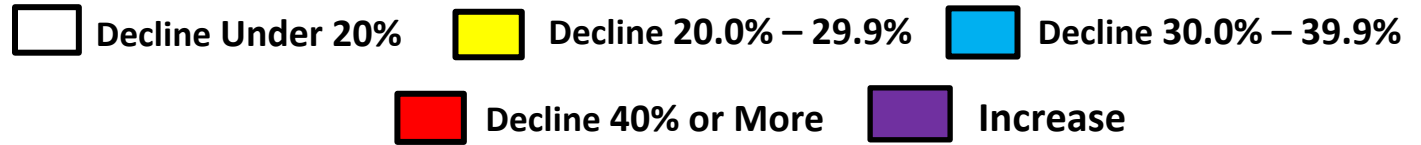
# Bankruptcy Filing Trends in Idaho: 2000-2025



Prepared by the American Bankruptcy Institute  
[www.abi.org](http://www.abi.org)



## Bankruptcy Filing Trends Since the Pandemic Calendar Year 2025 vs. 2019 National Average = 25.9% Decrease



# Bankruptcy Filing Trends in Idaho: 2000-2025

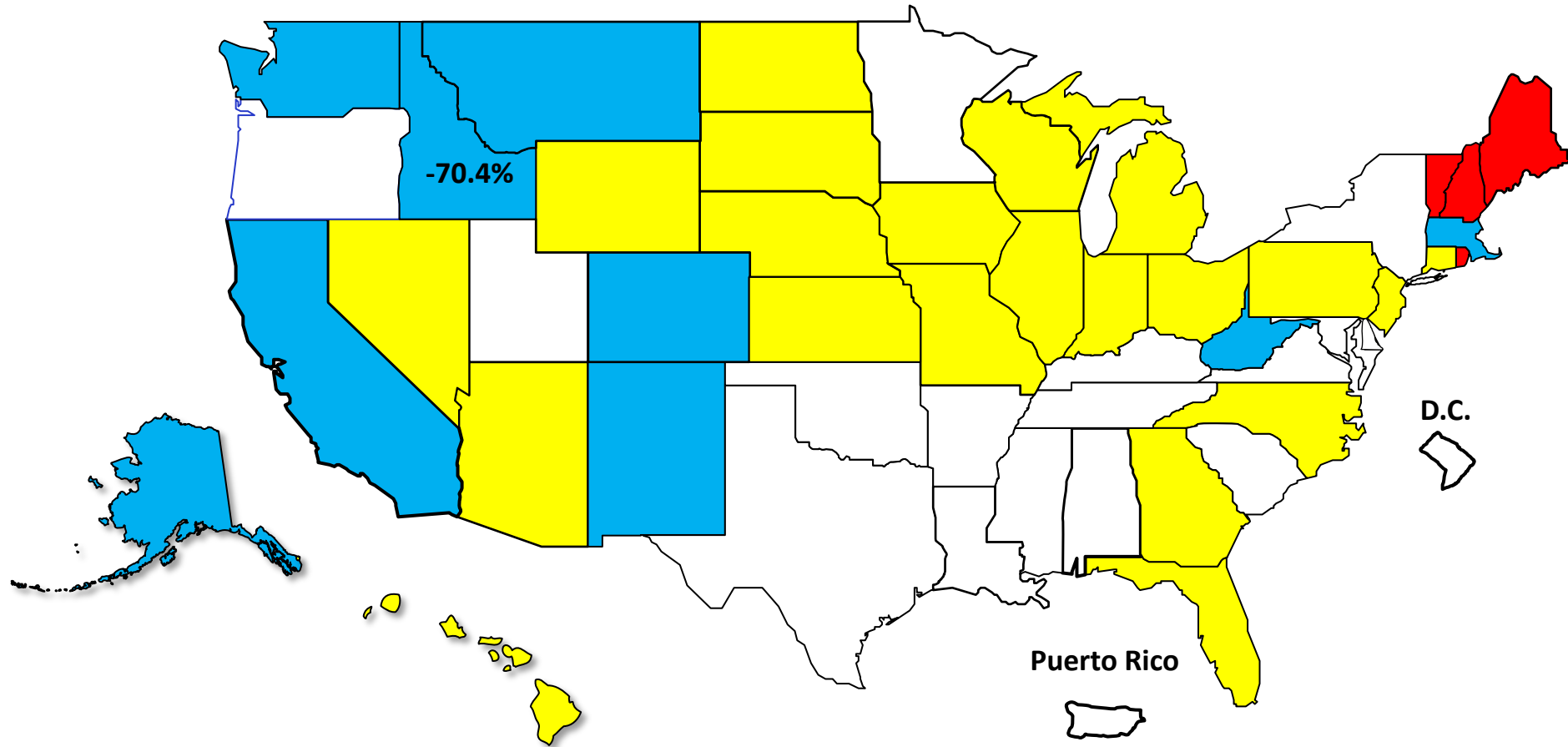


Prepared by the American Bankruptcy Institute  
[www.abi.org](http://www.abi.org)



## Percent Change in Total Filings Calendar Year 2025 Compared to 2010 (National Average = 63.9% Decrease)

### Amount of Decrease





# AMERICAN BANKRUPTCY INSTITUTE

Prepared by the American Bankruptcy Institute. [www.abi.org](http://www.abi.org)