

Bankruptcy Filing Trends in Connecticut: 2000-2025



Prepared by the American Bankruptcy Institute. www.abi.org



AMERICAN
BANKRUPTCY
INSTITUTE

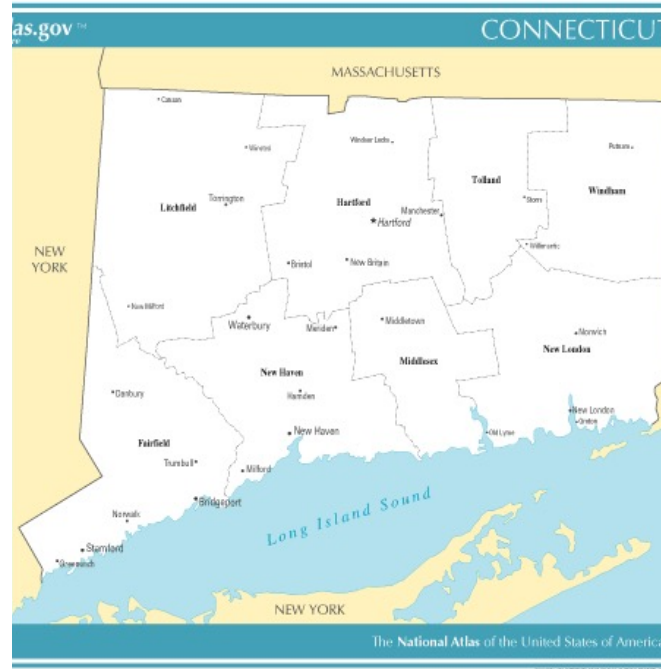
Bankruptcy Filing Trends in Connecticut: 2000-2025



Prepared by the American
Bankruptcy Institute
www.abi.org



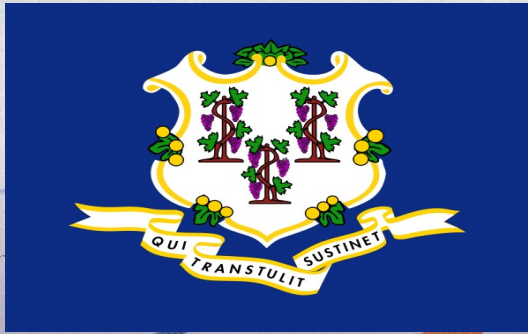
AMERICAN
BANKRUPTCY
INSTITUTE



Connecticut

State at a Glance		
	Connecticut	National
Population (7/1/2025)	3,688,496	341,784,857
- Change since April 2020	2.2%	3.1%
- Foreign Born	15.7%	14.1%
Size (Square Miles)	4,842	3,533,038
Median Household Income	\$95,781	\$80,734
Persons per Household	2.46	2.53
Per Capita Income	\$55,915	\$44,673
Median Home Value	\$366,900	\$332,700
Homeownership Rate	66.5%	65.2%
High School Graduate (or Higher)	91.5%	89.6%
College Graduate (or Higher)	42.5%	35.7%
Disabled	8.4%	9.3%
No Health Insurance	7.0	9.6%
In Poverty	10.2%	10.6%
Source: U.S. Census Bureau January 2026		

Bankruptcy Filing Trends in Connecticut: 2000-2025



Prepared by the American
Bankruptcy Institute
www.abi.org



AMERICAN
BANKRUPTCY
INSTITUTE

Bankruptcy Filings in Connecticut Calendar Years 2000 - 2025					
Year	Total	Chapter 7	Chapter 11	Chapter 13	Other Cases*
2025	3,671	3,071	27	572	1
2024	3,337	2,747	18	572	0
2023	2,900	2,315	18	567	0
2022	2,512	1,942	22	548	0
2021	3,018	2,601	15	402	0
2020	4,194	3,687	13	494	0
2019	6,148	4,915	46	1,185	2
2018	6,077	4,911	51	1,114	1
2017	5,595	4,438	45	1,110	2
2016	5,864	4,651	66	1,143	4
2015	6,294	5,091	92	1,110	1
2014	6,968	5,767	109	1,091	1
2013	7,154	6,078	95	980	1
2012	8,284	7,147	130	999	8
2011	9,579	8,534	121	923	1
2010	11,518	10,256	140	1,117	5
2009	10,334	9,015	139	1,179	1
2008	8,229	6,450	106	1,668	5
2007	5,890	4,148	116	1,626	0
2006	5,025	3,641	120	1,263	1
2005	15,272	13,546	46	1,673	7
2004	11,423	9,382	84	1,957	0
2003	12,246	10,050	103	2,088	5
2002	11,751	9,747	125	1,879	0
2001	11,613	9,993	88	1,530	2
2000	10,643	9,130	79	1,434	0
*Chapters 9, 12 and 15					

Bankruptcy Filing Trends in Connecticut: 2000-2025



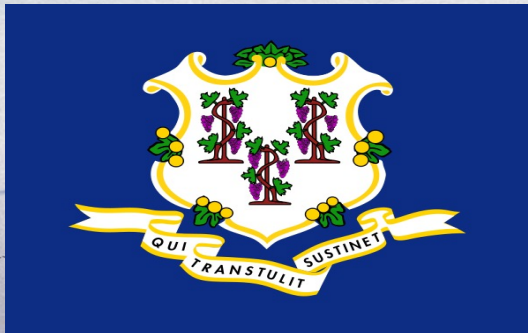
Prepared by the American
Bankruptcy Institute
www.abi.org



AMERICAN
BANKRUPTCY
INSTITUTE

Business Bankruptcy Cases Filed - Connecticut Years Ended December 31, 2000 - 2025					
CALENDAR YEAR	TOTAL FILINGS	CHAPTER 7	CHAPTER 11	CHAPTER 13	OTHER CASES*
2025	109	82	14	12	1
2024	114	96	12	6	0
2023	89	66	14	9	0
2022	85	66	17	2	0
2021	71	56	11	4	0
2020	114	95	11	8	0
2019	189	134	40	13	2
2018	195	134	42	18	1
2017	179	131	37	9	2
2016	230	152	59	15	4
2015	249	156	82	10	1
2014	299	196	87	15	1
2013	306	210	83	12	1
2012	372	233	109	22	8
2011	388	272	93	22	1
2010	459	319	114	21	5
2009	467	324	121	21	1
2008	392	272	95	20	5
2007	264	148	106	10	0
2006	219	94	114	10	1
2005	156	117	31	1	7
2004	132	69	62	1	0
2003	187	89	87	7	4
2002	181	67	112	2	0
2001	156	81	72	1	2
2000	139	76	62	1	0
* Chapters 9, 12 and 15					

Bankruptcy Filing Trends in Connecticut: 2000-2025

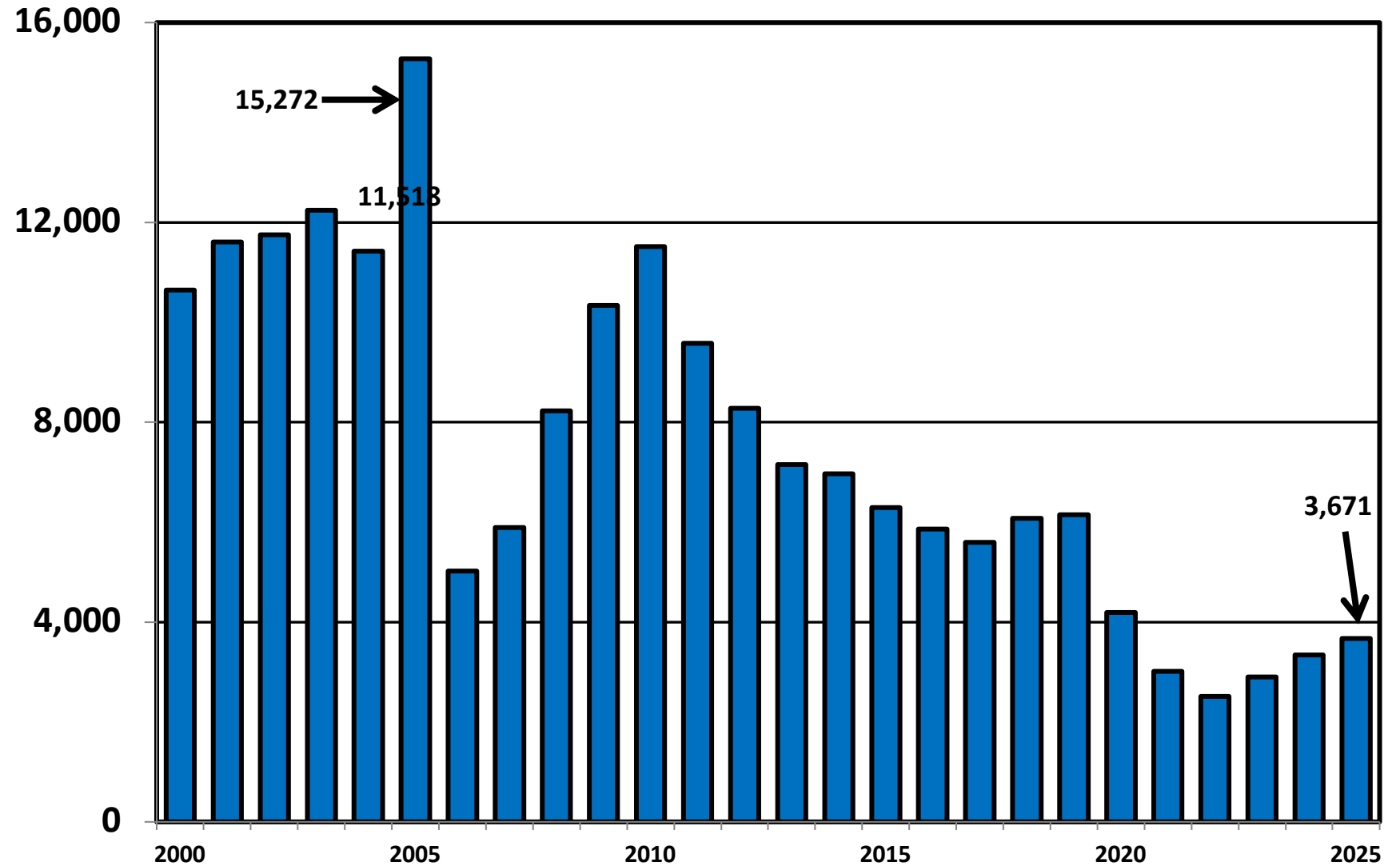


Prepared by the American Bankruptcy Institute
www.abi.org



AMERICAN
BANKRUPTCY
INSTITUTE

District of Connecticut Total Bankruptcy Cases Filed Calendar Years 2000 - 2025



Bankruptcy Filing Trends in Connecticut: 2000-2025



Prepared by the American Bankruptcy Institute
www.abi.org



AMERICAN
BANKRUPTCY
INSTITUTE

Total Filings Relative to Population 2000 - 2025



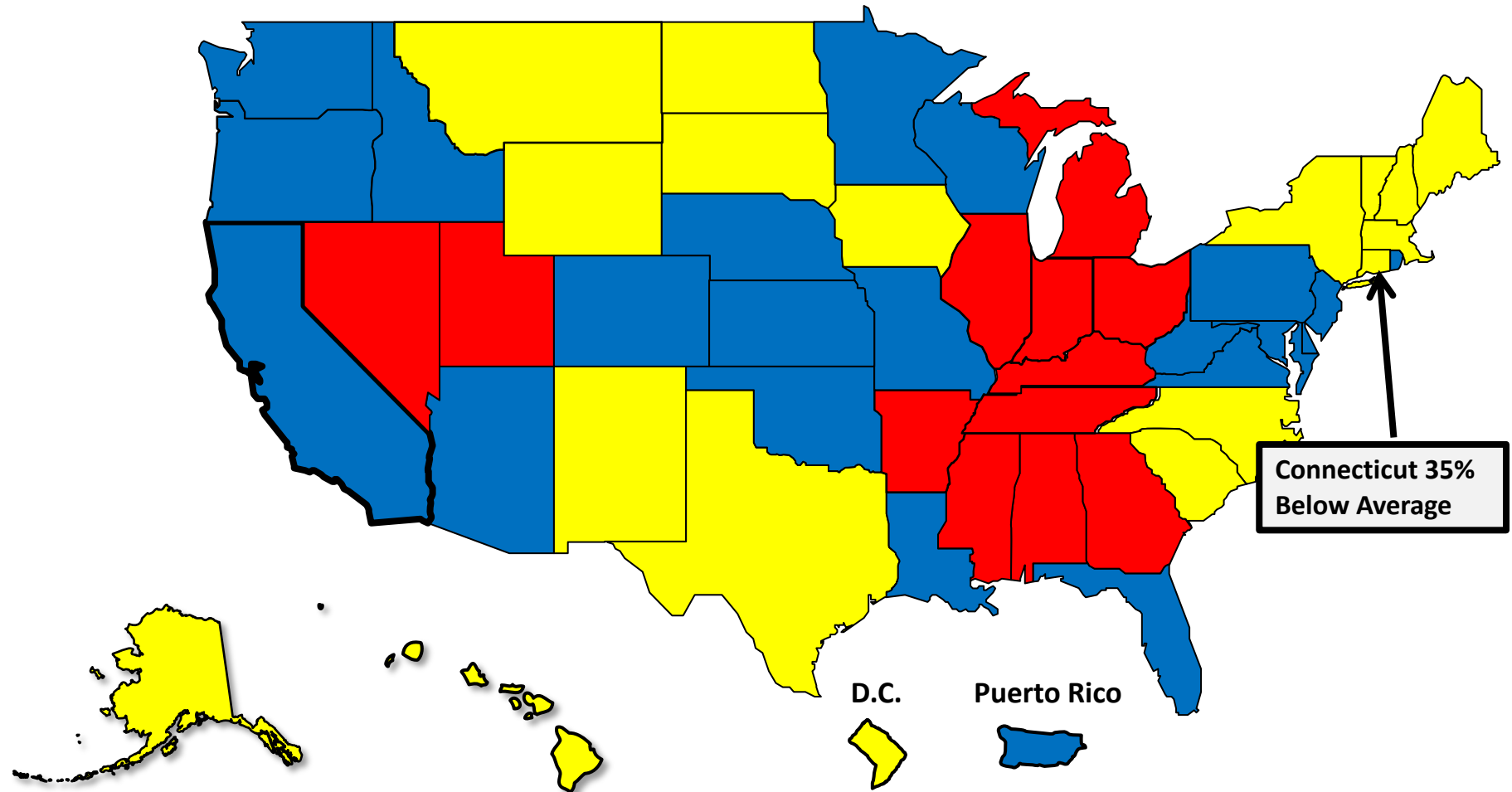
More than 25%
Above Average



Within 25%
of Average



More than 25%
Below Average



Bankruptcy Filing Trends in Connecticut: 2000-2025

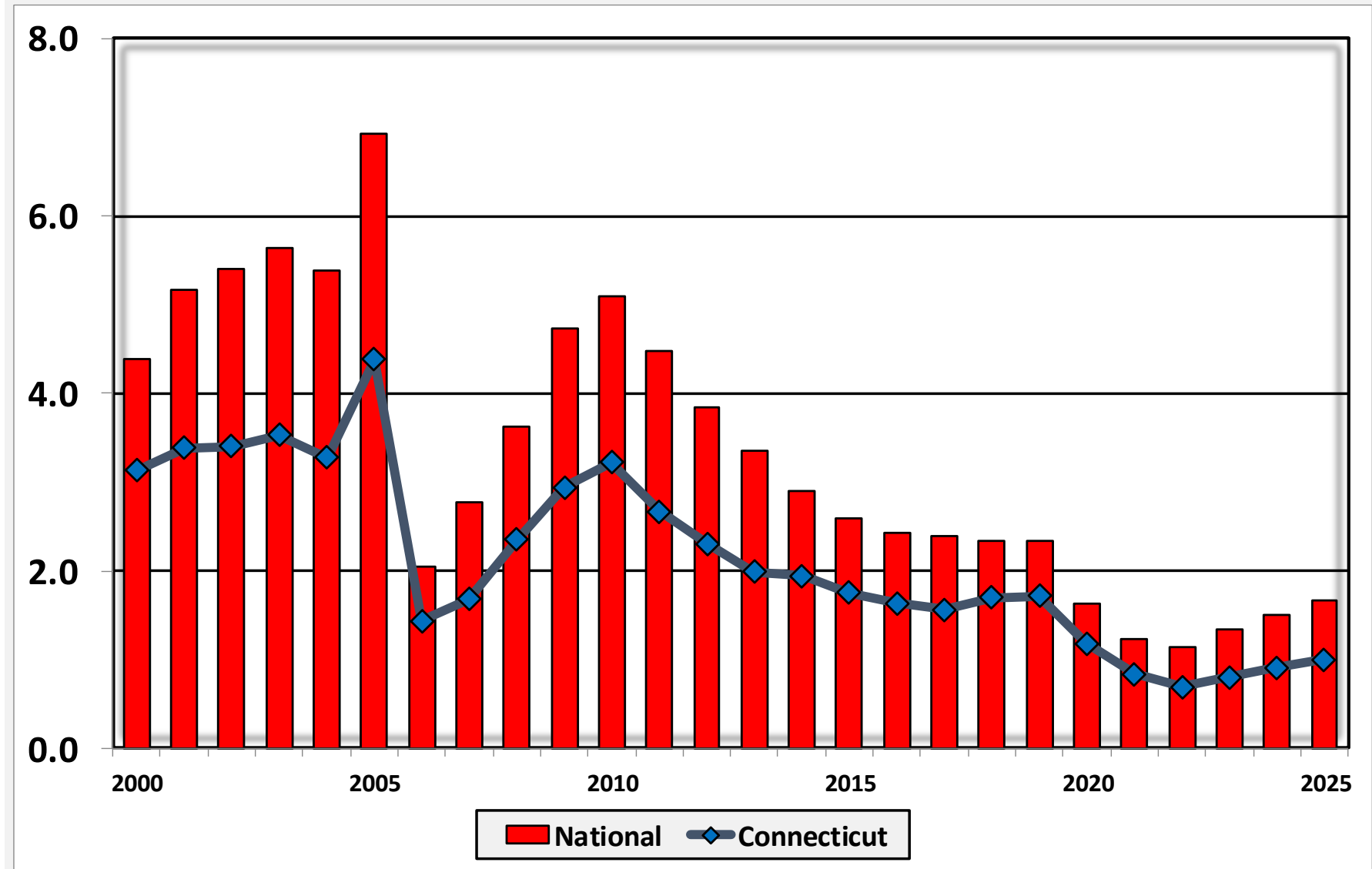


Prepared by the American
Bankruptcy Institute
www.abi.org

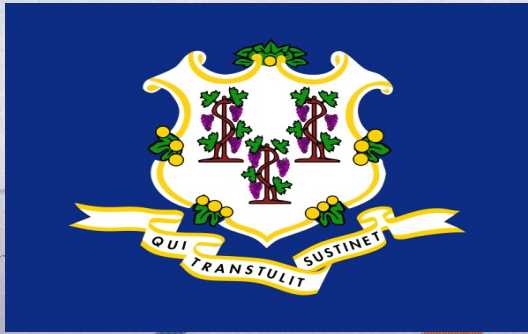


AMERICAN
BANKRUPTCY
INSTITUTE

Bankruptcy Filings per 1,000 Population Connecticut vs. National Average 2000 - 2025



Bankruptcy Filing Trends in Connecticut: 2000-2025

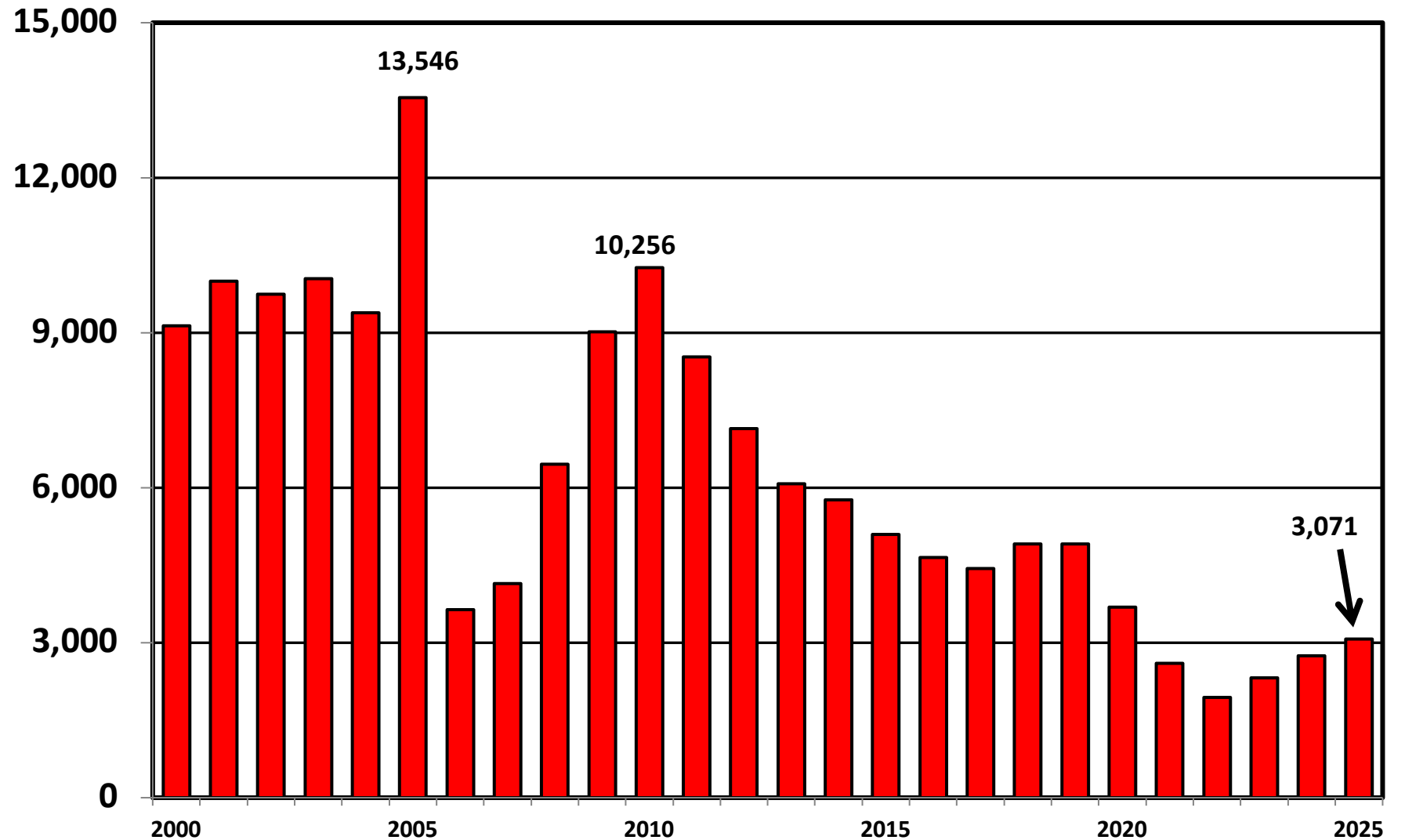


Prepared by the American
Bankruptcy Institute
www.abi.org

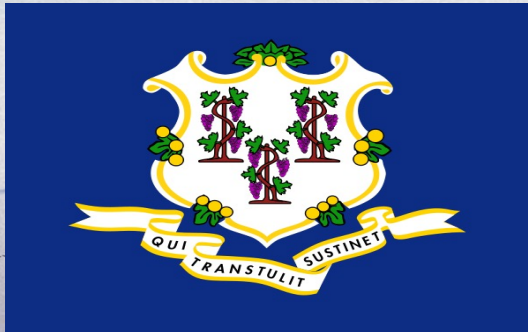


AMERICAN
BANKRUPTCY
INSTITUTE

Chapter 7 Cases Filed In Connecticut Calendar Years 2000 - 2025



Bankruptcy Filing Trends in Connecticut: 2000-2025

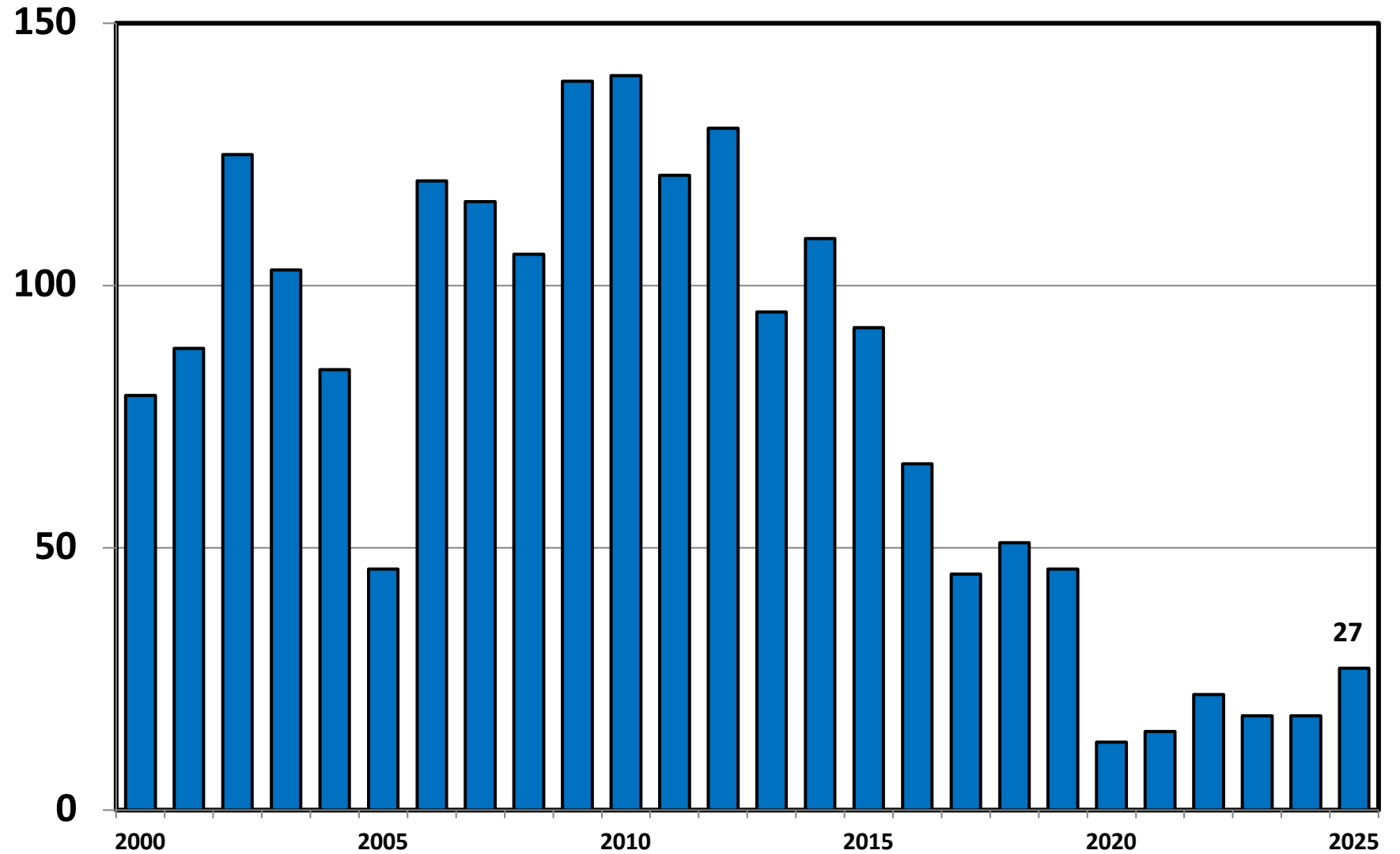


Prepared by the American
Bankruptcy Institute
www.abi.org

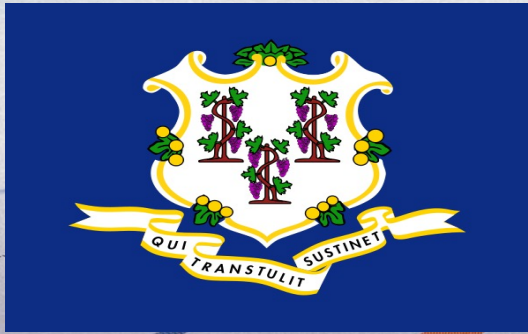


AMERICAN
BANKRUPTCY
INSTITUTE

Chapter 11 Cases Filed in Connecticut 2000 - 2025



Bankruptcy Filing Trends in Connecticut: 2000-2025

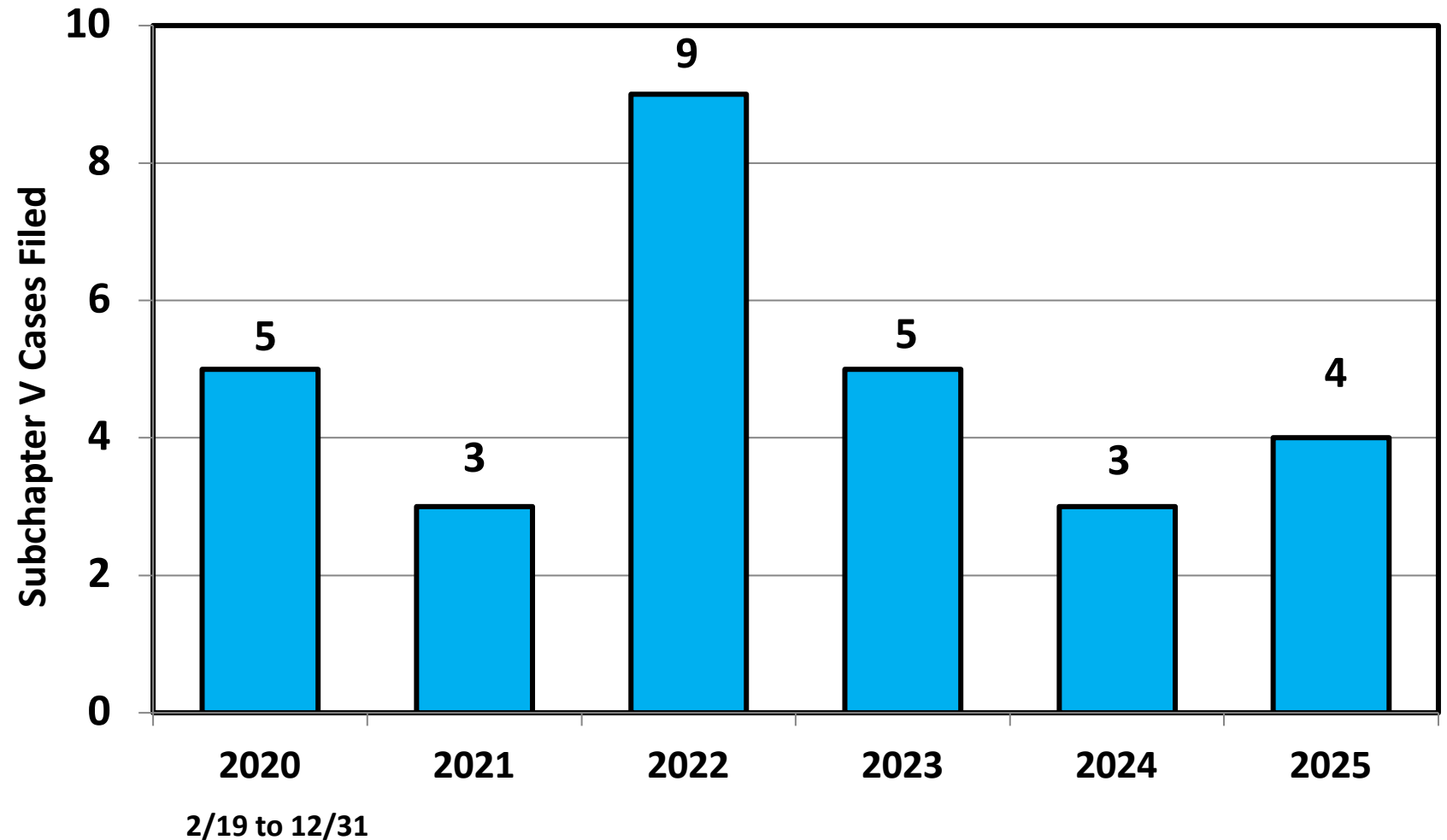


Prepared by the American
Bankruptcy Institute
www.abi.org



AMERICAN
BANKRUPTCY
INSTITUTE

Subchapter V Cases Filed in Connecticut Calendar Years 2020 - 2025



Source: ABI review of PACER records

Bankruptcy Filing Trends in Connecticut: 2000-2025

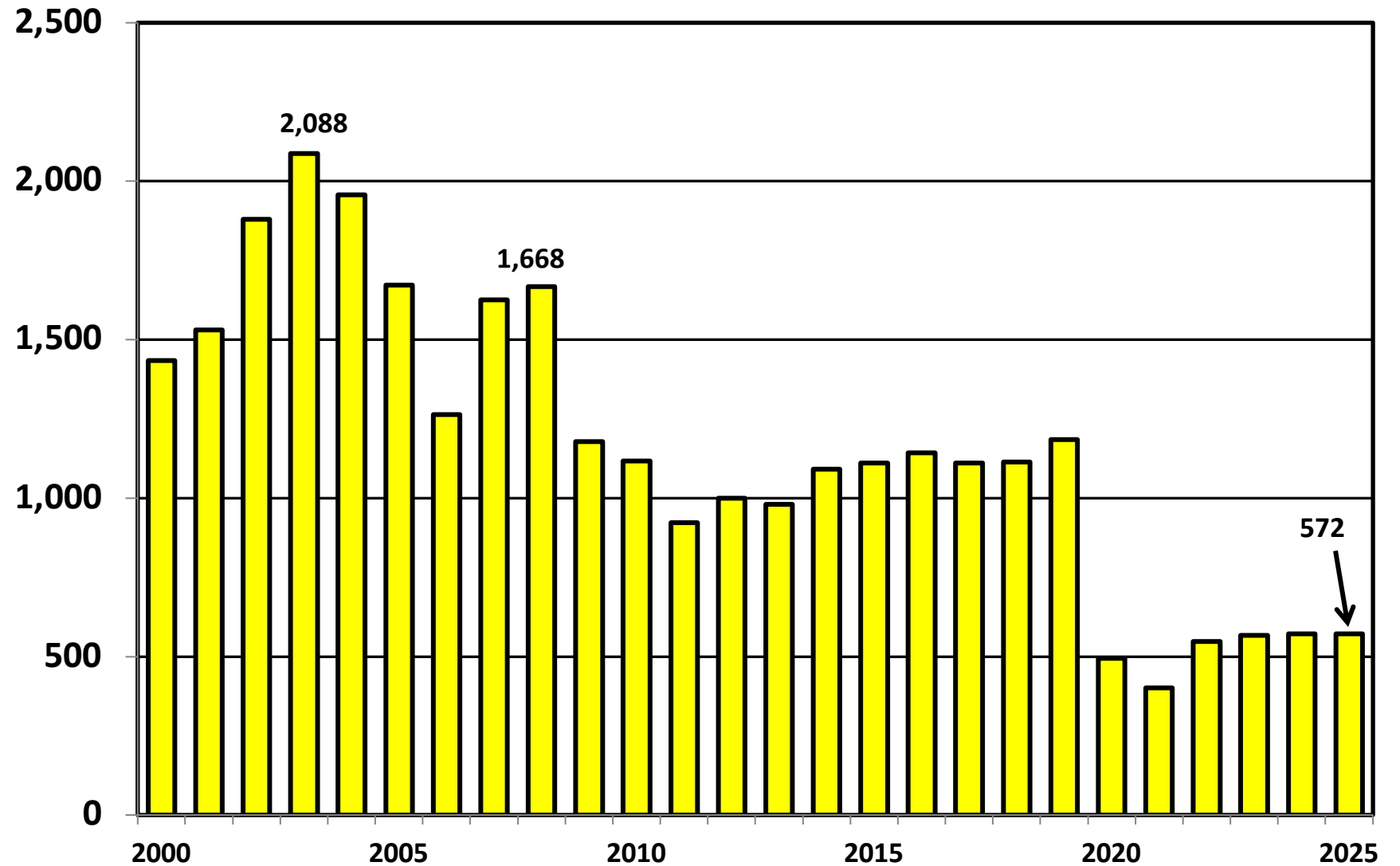


Prepared by the American
Bankruptcy Institute
www.abi.org

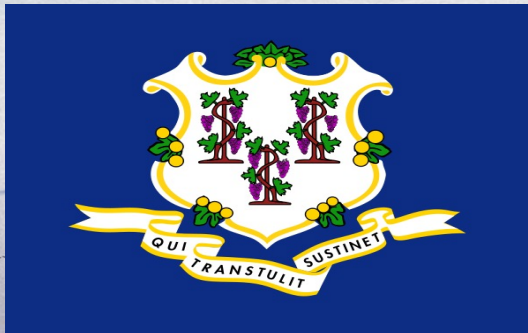


AMERICAN
BANKRUPTCY
INSTITUTE

Chapter 13 Cases Filed in Connecticut 2000 - 2025



Bankruptcy Filing Trends in Connecticut: 2000-2025

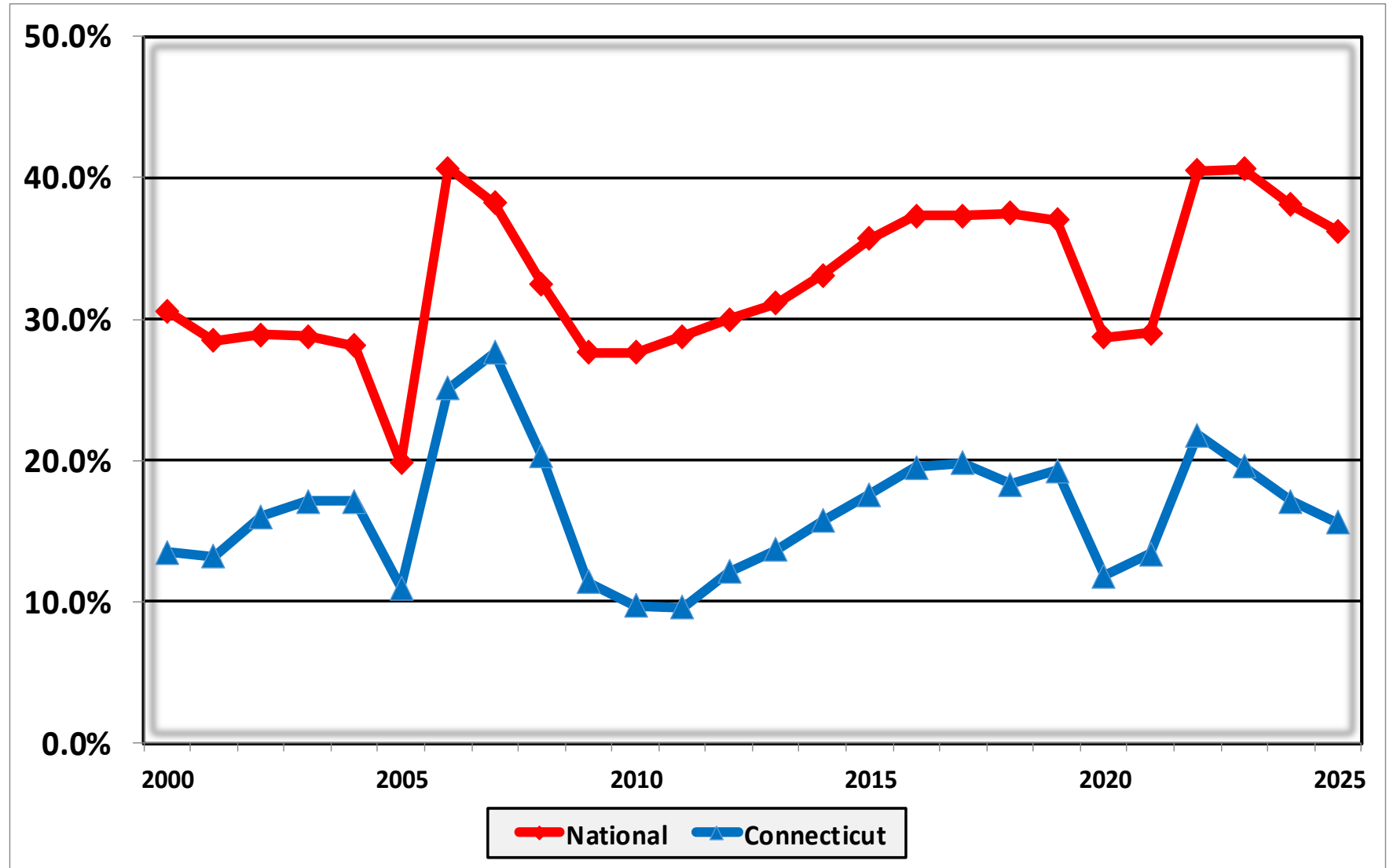


Prepared by the American Bankruptcy Institute
www.abi.org



AMERICAN BANKRUPTCY INSTITUTE

Percent of Cases Filed as Chapter 13 Calendar Years 2000 - 2025



Bankruptcy Filing Trends in Connecticut: 2000-2025

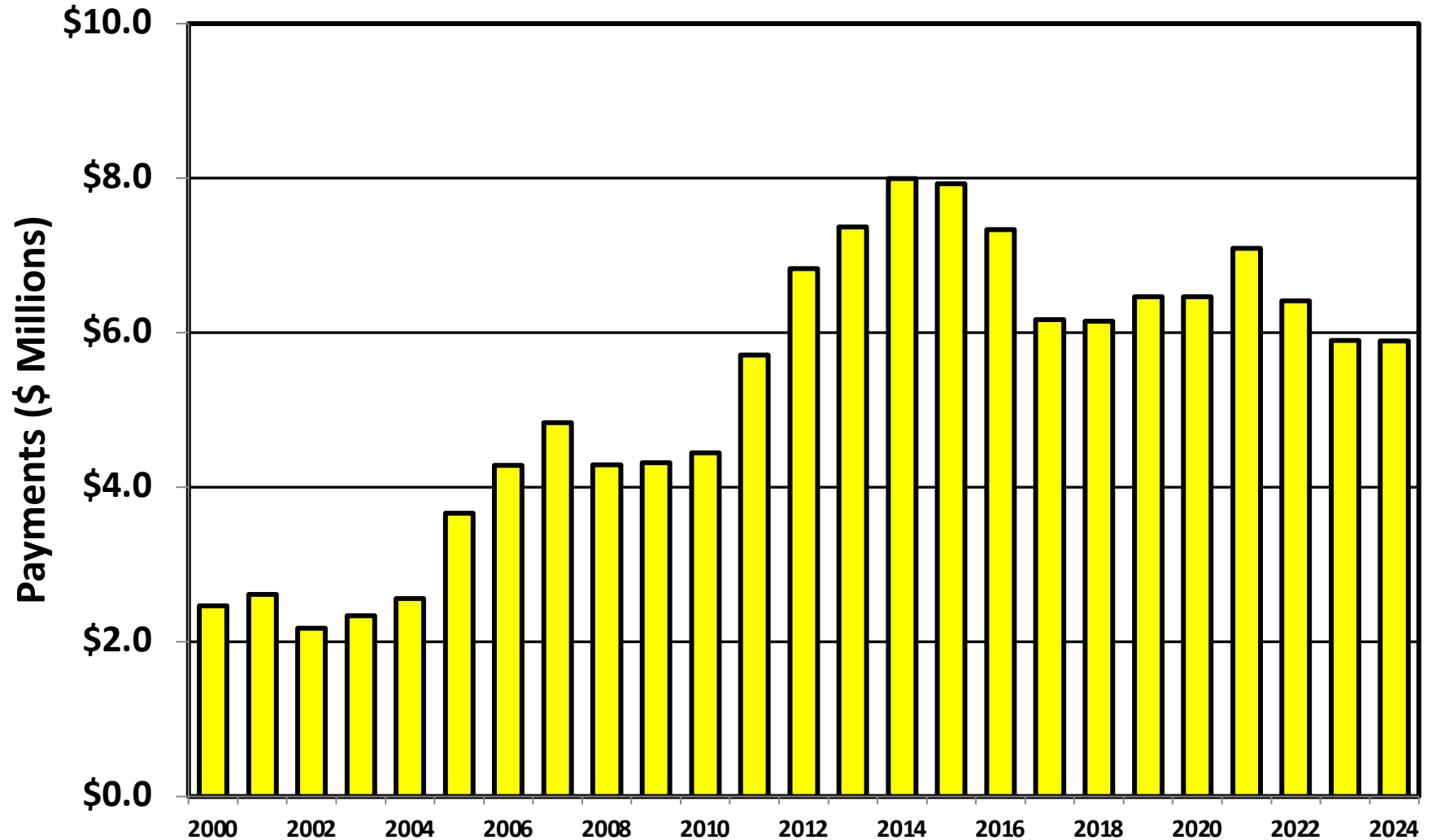


Prepared by the American
Bankruptcy Institute
www.abi.org



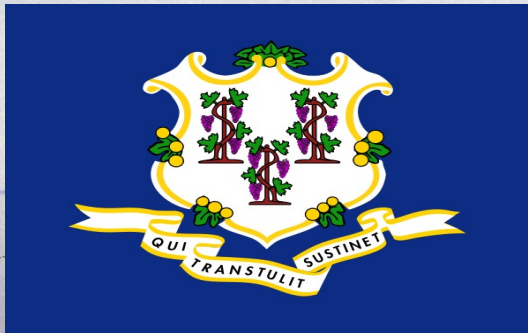
AMERICAN
BANKRUPTCY
INSTITUTE

Chapter 13 Cases in Connecticut Amount (in Millions) Paid to Unsecured Creditors Fiscal Years 2000 - 2024



Source: Executive Office for United States Trustees

Bankruptcy Filing Trends in Connecticut: 2000-2025

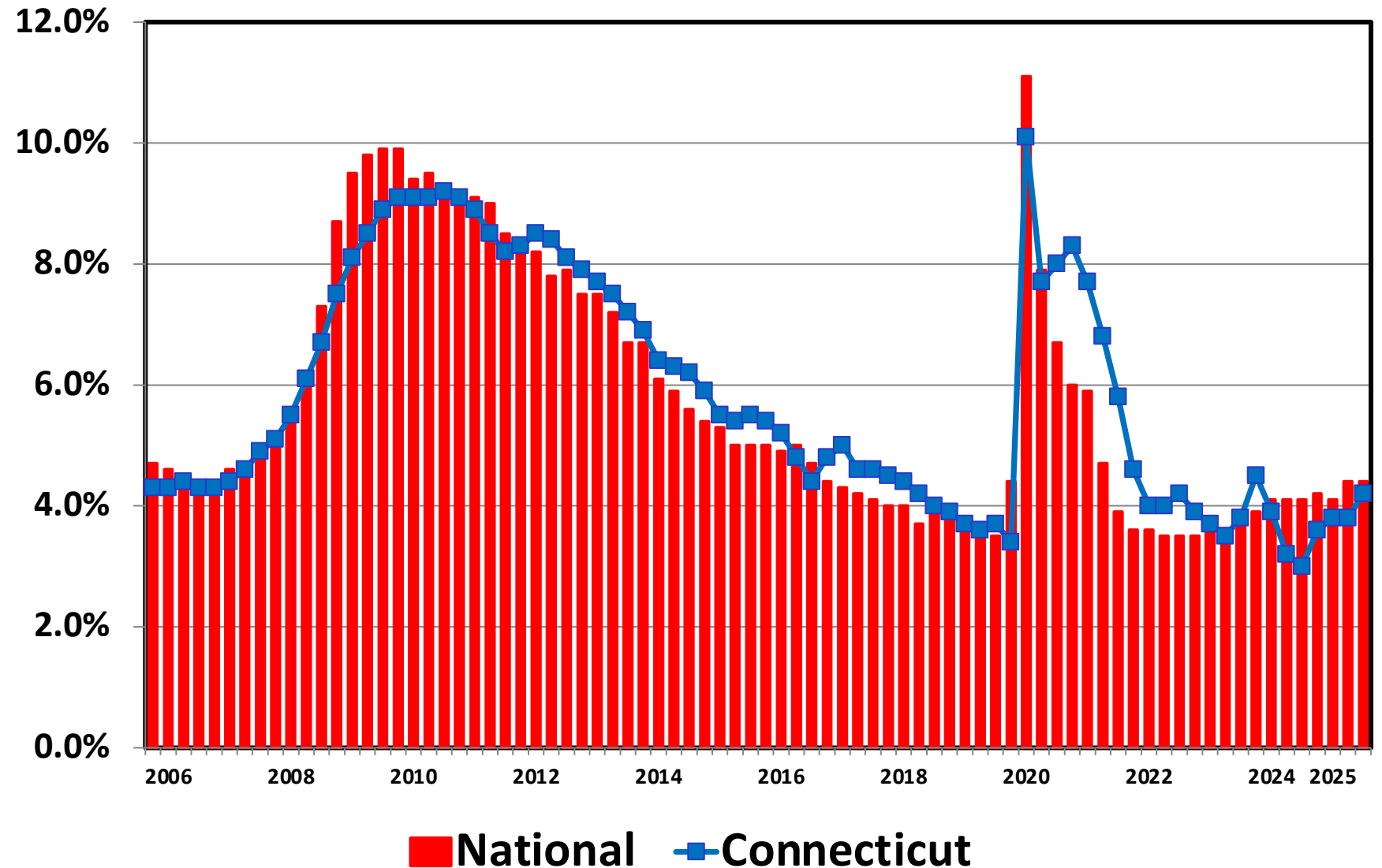


Prepared by the American Bankruptcy Institute
www.abi.org



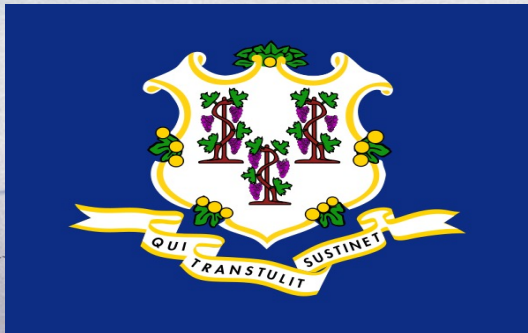
AMERICAN
BANKRUPTCY
INSTITUTE

Unemployment Rate By Quarter 2006 - 2025



Source: Bureau of Labor Statistics

Bankruptcy Filing Trends in Connecticut: 2000-2025

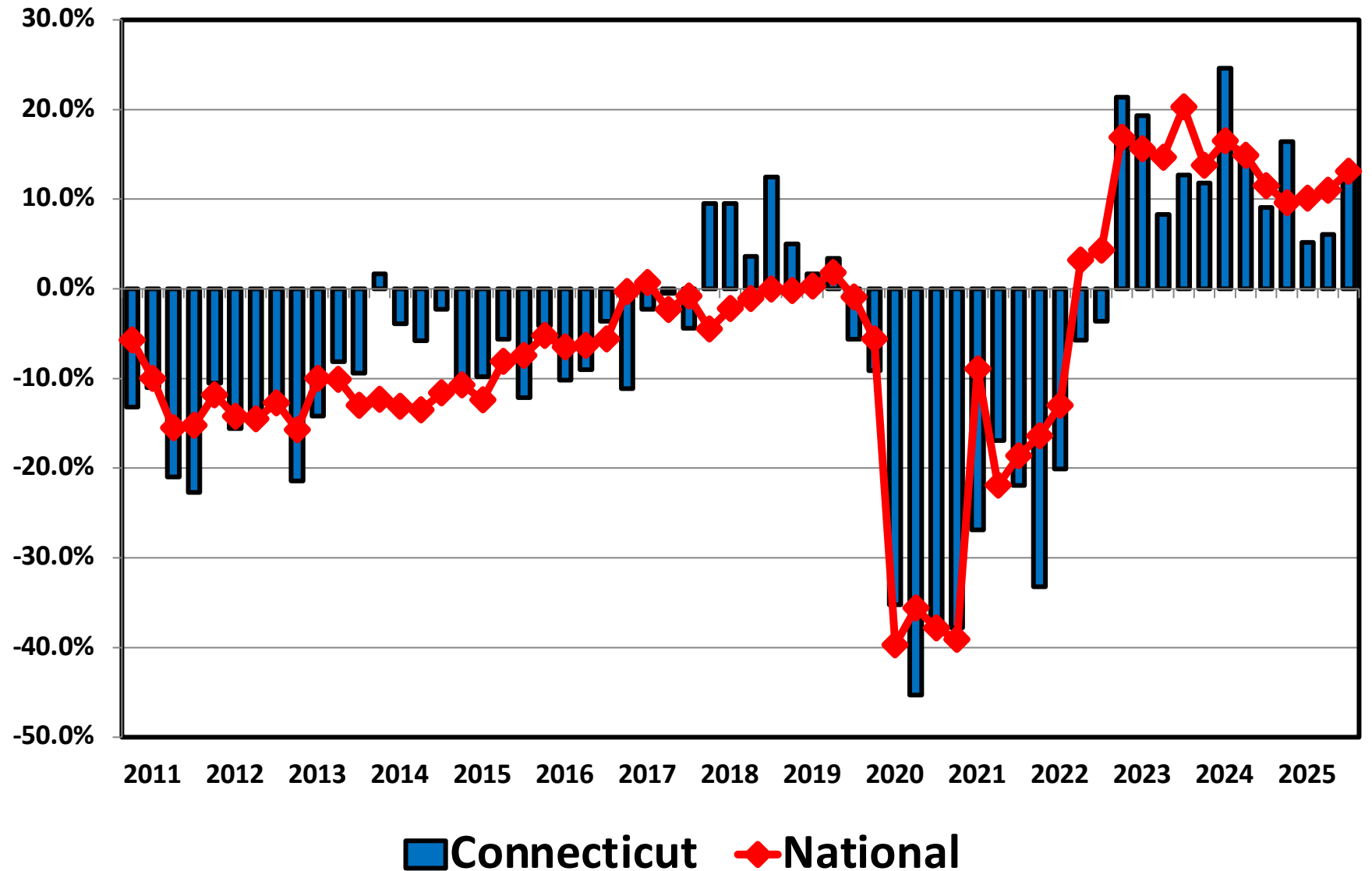


Prepared by the American Bankruptcy Institute
www.abi.org



AMERICAN
BANKRUPTCY
INSTITUTE

Filing Trends By Quarter Connecticut vs. National Average (Percent Change From Same Quarter One Year Prior)



Bankruptcy Filing Trends in Connecticut: 2000-2025



Prepared by the American Bankruptcy Institute
www.abi.org



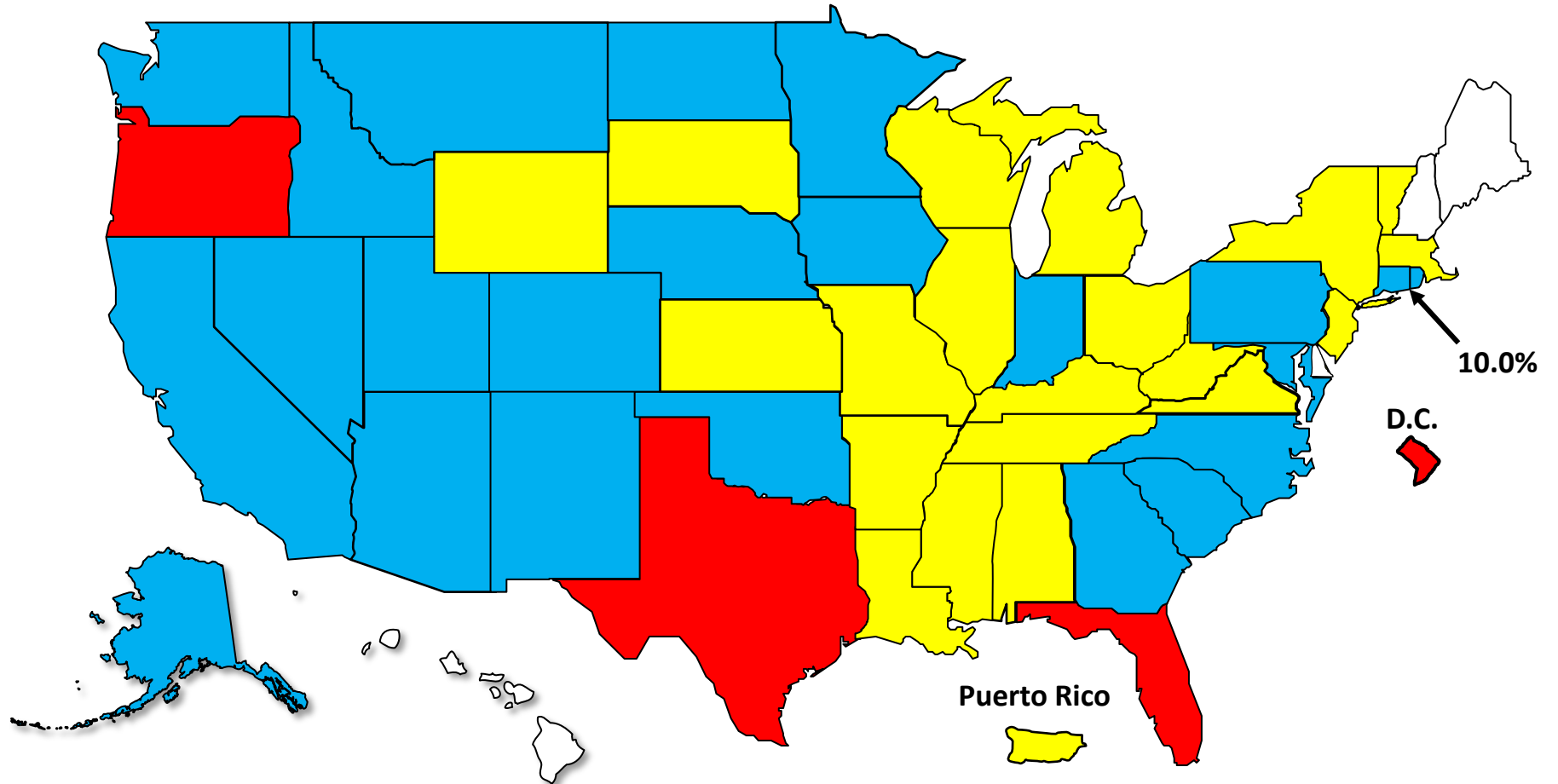
AMERICAN BANKRUPTCY INSTITUTE

Bankruptcy Filing Trends

Calendar Year 2025 vs. 2024

National Average = 11.0% Increase

+20% or More +10.0% to 19.9% +0% to 9.9% Decline



Bankruptcy Filing Trends in Connecticut: 2000-2025

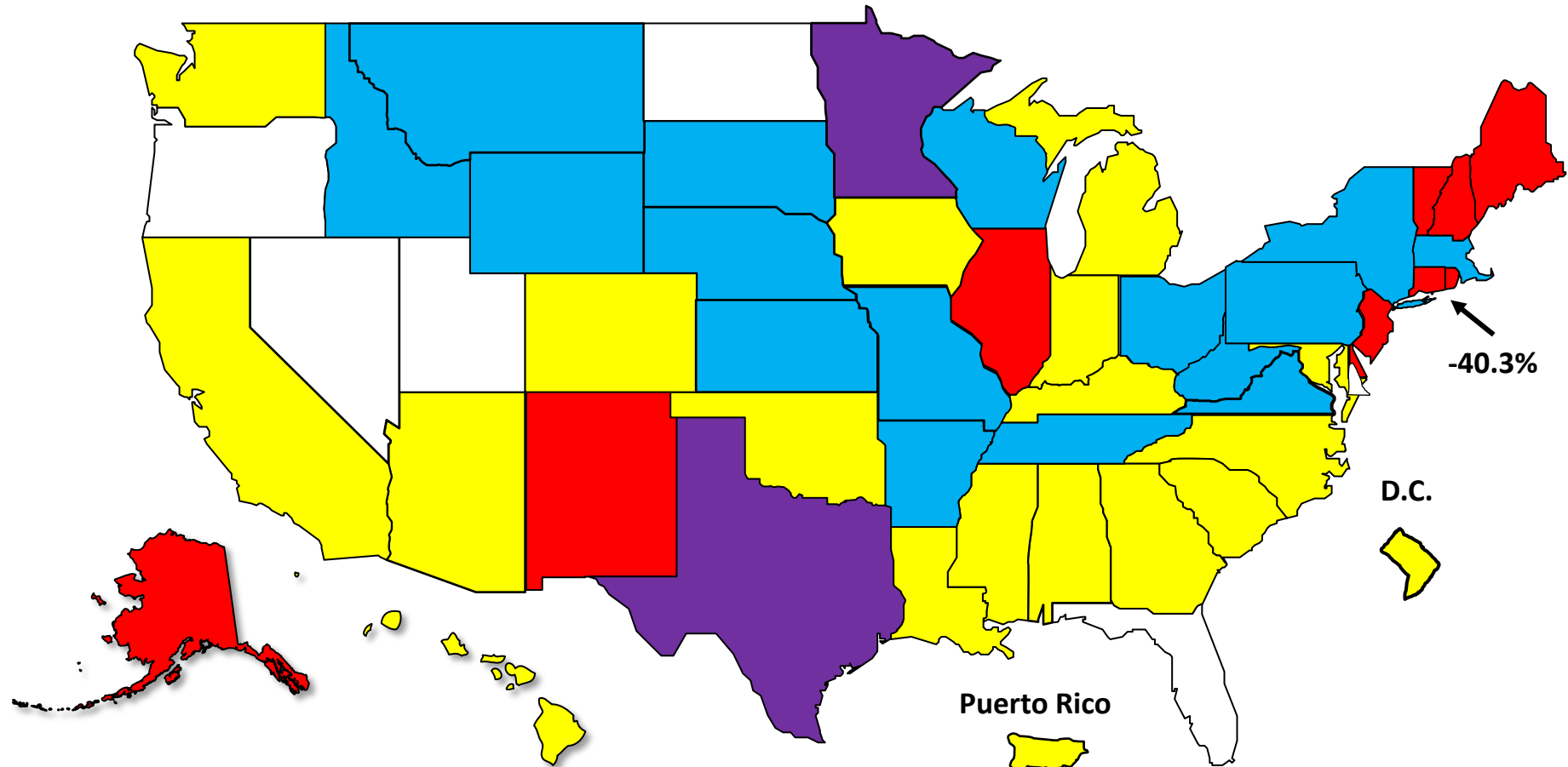
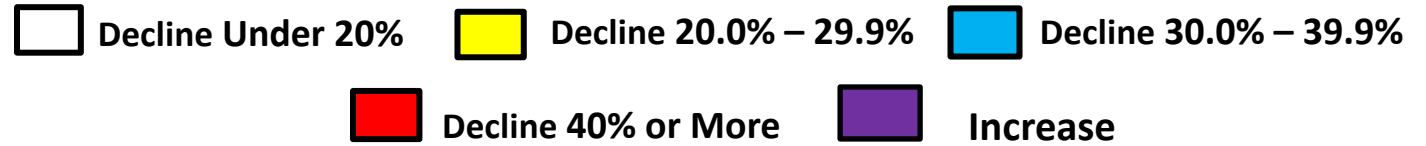


Prepared by the American Bankruptcy Institute
www.abi.org



AMERICAN BANKRUPTCY INSTITUTE

Bankruptcy Filing Trends Since the Pandemic Calendar Year 2025 vs. 2019 National Average = 25.9% Decrease



Bankruptcy Filing Trends in Connecticut: 2000-2025



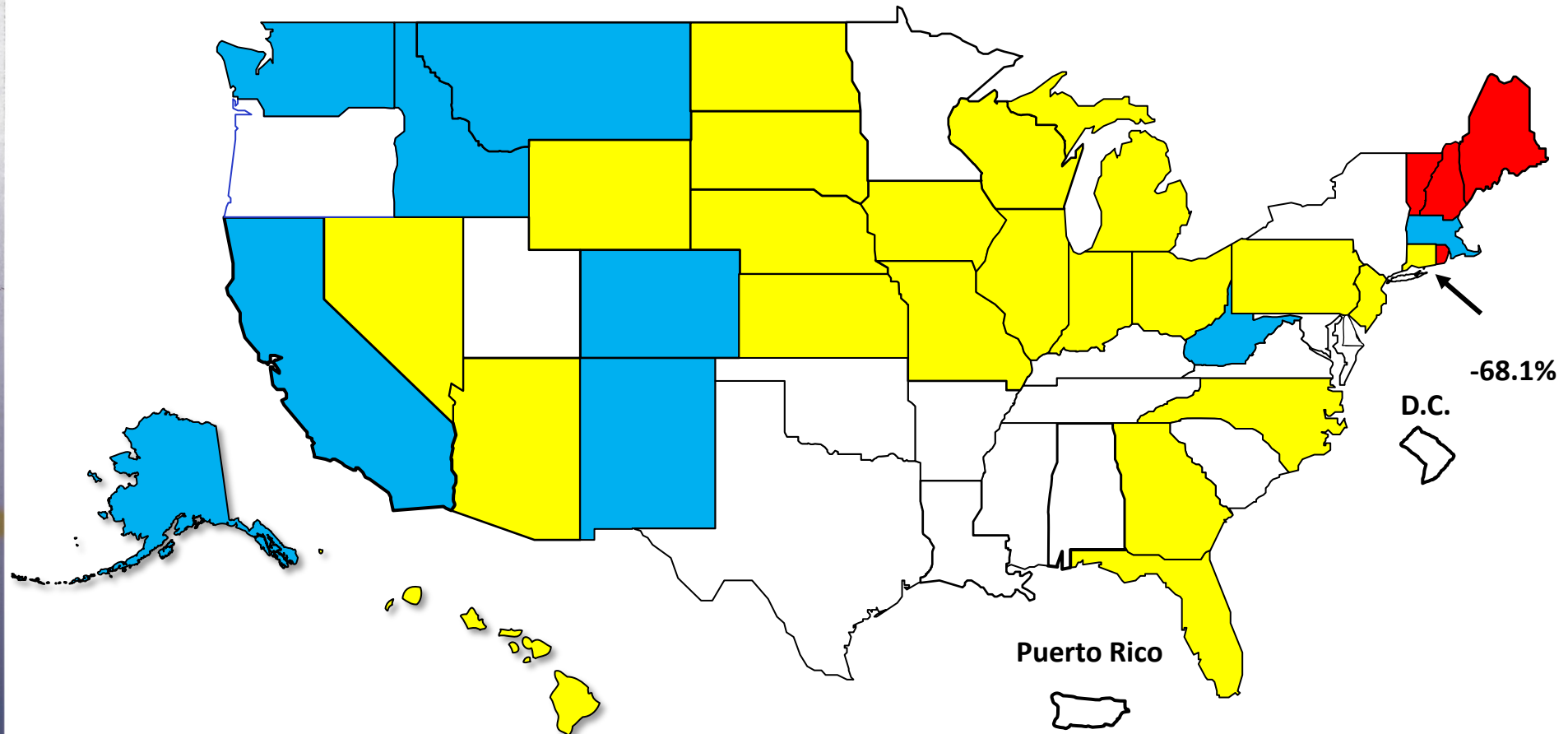
Prepared by the American Bankruptcy Institute
www.abi.org



AMERICAN BANKRUPTCY INSTITUTE

Percent Change in Total Filings Calendar Year 2025 Compared to 2010 (National Average = 63.9% Decrease)

Amount of Decrease





AMERICAN BANKRUPTCY INSTITUTE

Prepared by the American Bankruptcy Institute. www.abi.org