

Bankruptcy Filing Trends in Arkansas: 2000-2025



Prepared by the American Bankruptcy Institute. www.abi.org



Bankruptcy Filing Trends in Arkansas: 2000-2025



Arkansas

State at a Glance

	Arkansas	National
Population (7/1/2025)	3,088,354	341,784,857
- Change since April 2020	3.4%	3.1%
- Foreign Born	5.4%	14.1%
Size (Square Miles)	51,993	3,533,038
Median Household Income	\$60,773	\$80,734
Persons per Household	2.46	2.53
Per Capita Income	\$34,225	\$44,673
Median Home Value	\$188,000	\$332,700
Homeownership Rate	66.4%	65.2%
High School Graduate (or Higher)	88.7%	89.6%
College Graduate (or Higher)	25.7	35.7%
Disabled	13.3%	9.3%
No Health Insurance	11.4%	9.6%
In Poverty	15.5%	10.6%

Source: U.S. Census Bureau January 2026

Prepared by the American
Bankruptcy Institute
www.abi.org



AMERICAN
BANKRUPTCY
INSTITUTE

Bankruptcy Filing Trends in Arkansas: 2000-2025



Prepared by the American
Bankruptcy Institute
www.abi.org



AMERICAN
BANKRUPTCY
INSTITUTE

Bankruptcy Filings in Arkansas Calendar Years 2000 - 2025					
Year	Total	Chapter 7	Chapter 11	Chapter 13	Other Cases*
2025	6,997	3,003	58	3,903	33
2024	6,654	2,624	48	3,965	17
2023	6,255	2,554	27	3,667	7
2022	5,481	2,118	19	3,336	8
2021	5,493	2,885	13	2,591	4
2020	7,545	4,154	30	3,347	14
2019	10,676	5,078	27	5,557	14
2018	10,734	5,208	29	5,484	13
2017	10,539	5,089	32	5,408	10
2016	10,451	4,908	27	5,499	17
2015	10,330	4,796	37	5,484	13
2014	11,236	5,361	39	5,818	18
2013	12,252	5,938	58	6,243	13
2012	12,914	6,727	45	6,130	12
2011	14,604	7,869	68	6,648	19
2010	16,503	9,150	86	7,254	13
2009	16,583	9,138	96	7,336	13
2008	13,991	7,250	97	6,632	12
2007	11,852	5,945	55	5,840	12
2006	9,564	4,423	27	5,092	22
2005	30,568	20,227	40	10,289	12
2004	24,263	14,170	49	10,043	1
2003	24,307	14,472	52	9,771	12
2002	23,546	13,691	43	9,806	6
2001	21,484	12,641	36	8,801	6
2000	16,784	9,410	35	7,331	8
*Chapters 9, 12 and 15					

Bankruptcy Filing Trends in Arkansas: 2000-2025



Prepared by the American
Bankruptcy Institute
www.abi.org



AMERICAN
BANKRUPTCY
INSTITUTE

Business Bankruptcy Cases Filed - Arkansas Years Ended December 31, 2000 - 2025					
CALENDAR YEAR	TOTAL FILINGS	CHAPTER 7	CHAPTER 11	CHAPTER 13	OTHER CASES*
2025	259	137	49	40	33
2024	185	87	43	38	17
2023	145	89	23	26	7
2022	98	52	14	24	8
2021	123	86	12	21	4
2020	189	120	26	29	14
2019	207	146	20	27	14
2018	192	118	25	36	13
2017	229	160	28	31	10
2016	248	174	21	36	17
2015	237	164	32	28	13
2014	235	144	36	37	18
2013	306	203	51	39	13
2012	363	259	42	50	12
2011	424	287	67	51	19
2010	537	381	81	62	13
2009	619	436	88	82	13
2008	497	325	92	68	12
2007	397	257	52	76	12
2006	276	165	25	64	22
2005	426	267	35	112	12
2004	376	209	45	121	1
2003	429	197	46	174	12
2002	282	147	32	97	6
2001	290	148	32	104	6
2000	261	131	33	89	8
* Chapters 9, 12 and 15					

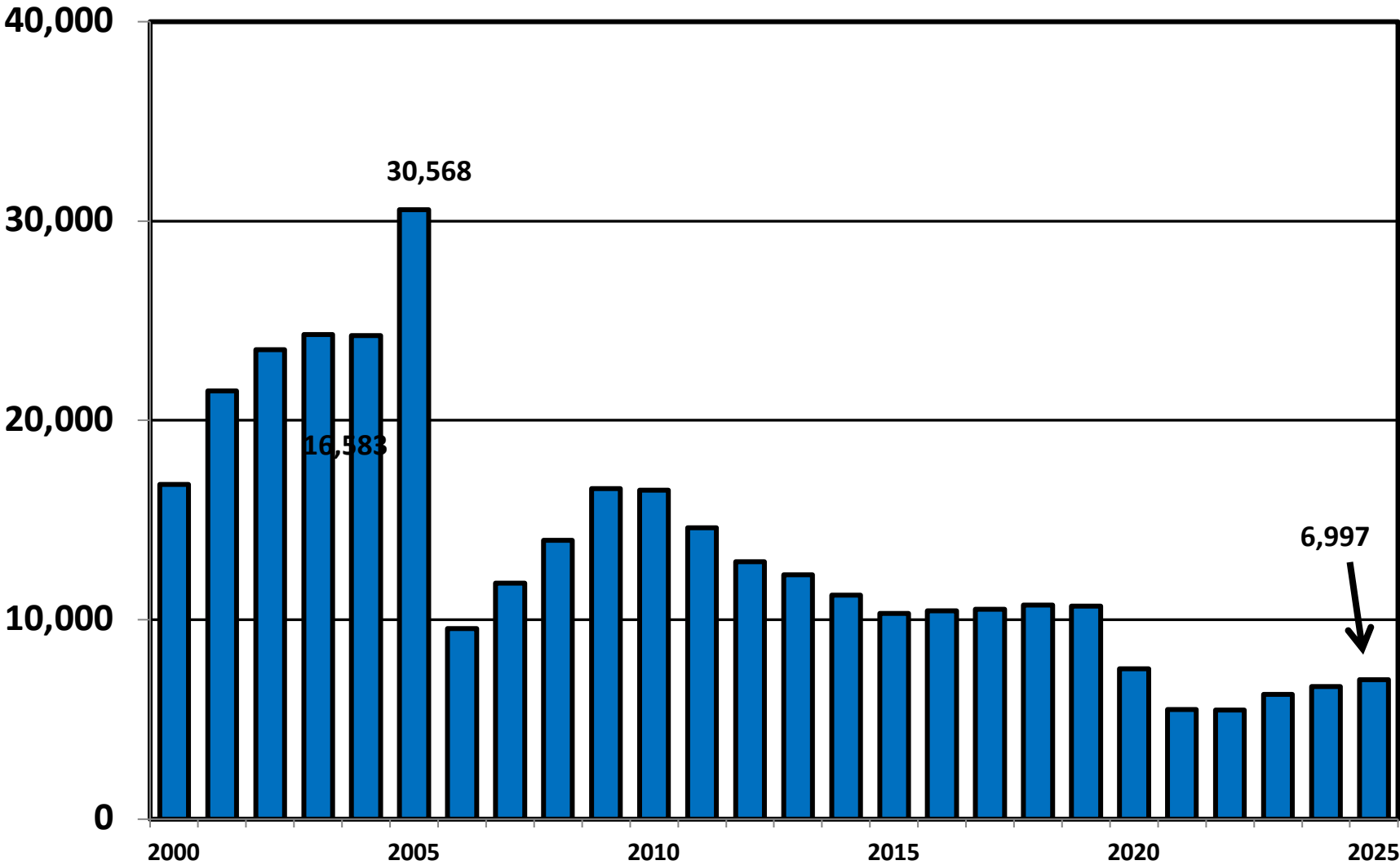
Bankruptcy Filing Trends in Arkansas: 2000-2025



Prepared by the American Bankruptcy Institute
www.abi.org



Total Bankruptcy Cases Filed in Arkansas Calendar Years 2000 - 2025



Bankruptcy Filing Trends in Arkansas: 2000-2025

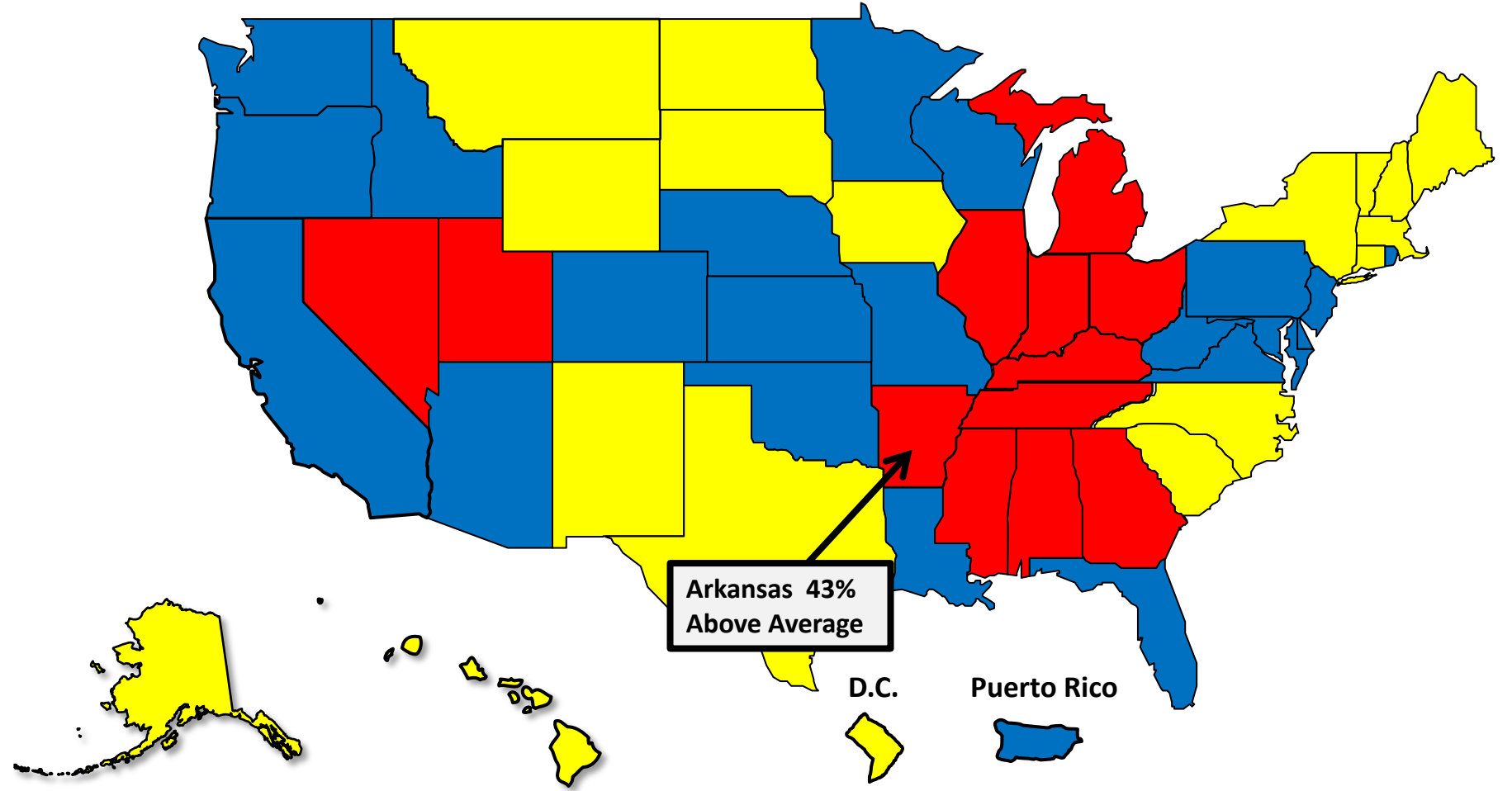


Prepared by the American Bankruptcy Institute
www.abi.org



AMERICAN BANKRUPTCY INSTITUTE

Total Filings Relative to Population 2000 - 2025



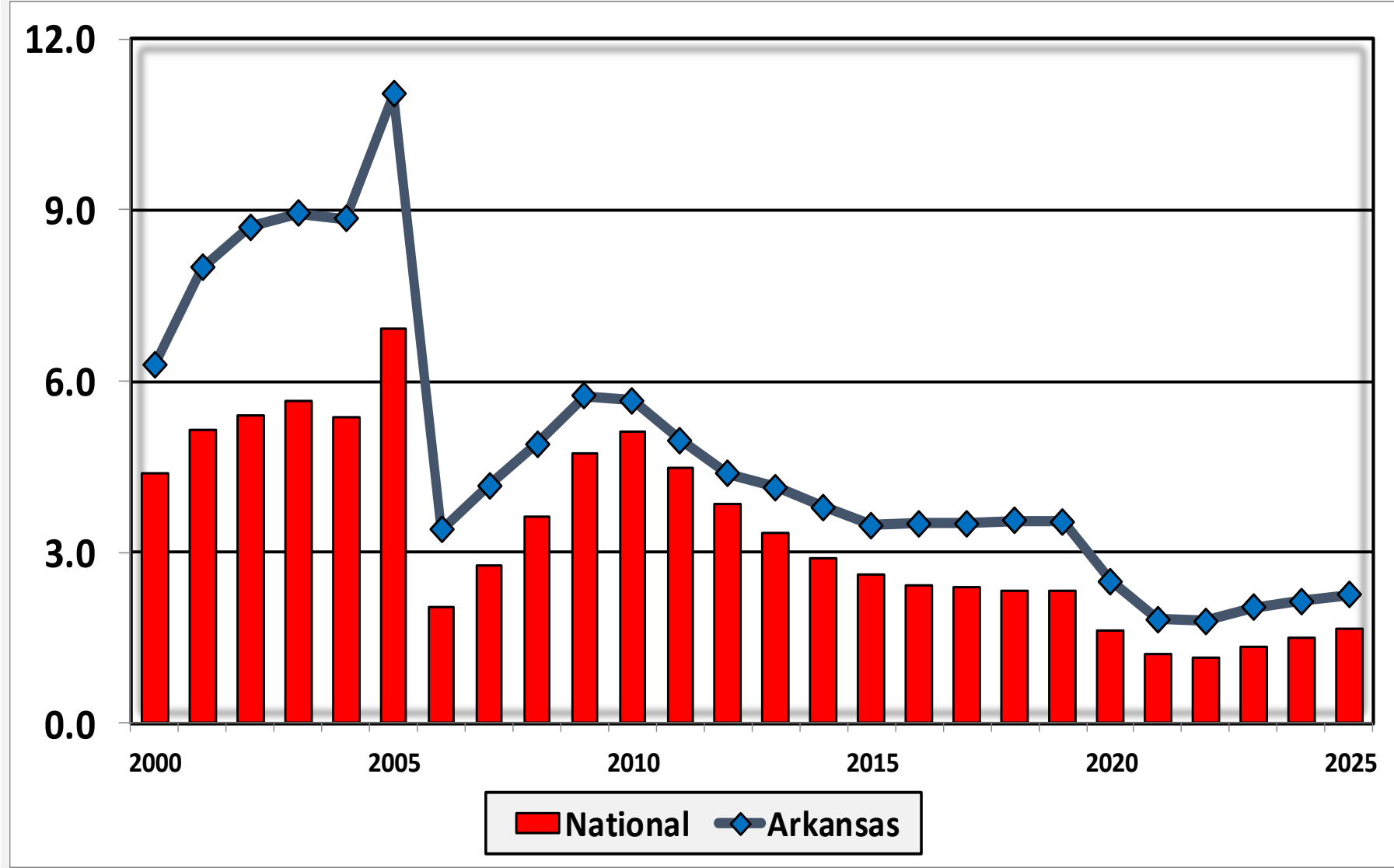
Bankruptcy Filing Trends in Arkansas: 2000-2025



Prepared by the American Bankruptcy Institute
www.abi.org



Bankruptcy Filings per 1,000 Population Arkansas vs. National Average 2000 – 2025



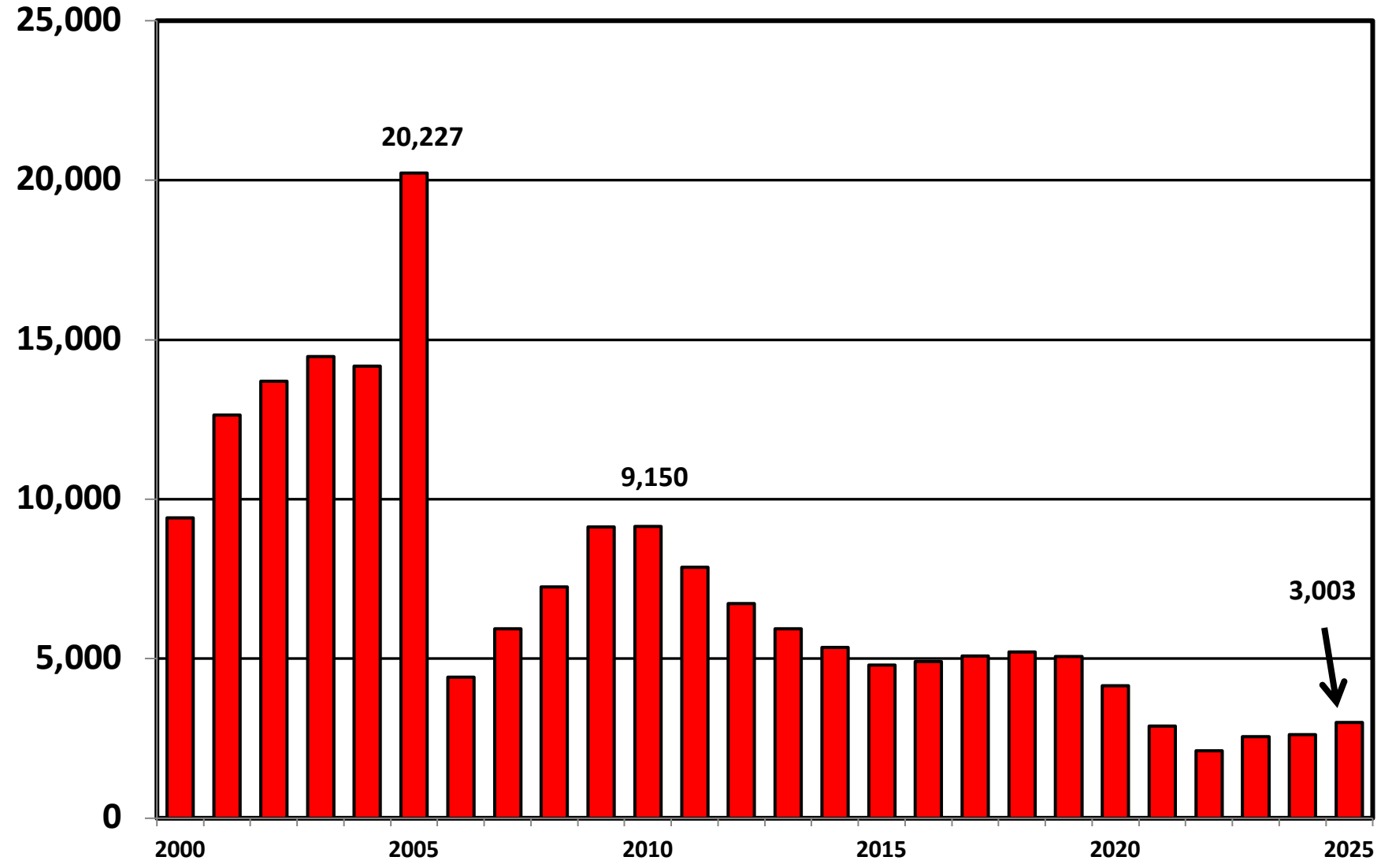
Bankruptcy Filing Trends in Arkansas: 2000-2025



Prepared by the American Bankruptcy Institute
www.abi.org



Chapter 7 Cases Filed In Arkansas Calendar Years 2000 - 2025



Bankruptcy Filing Trends in Arkansas: 2000-2025

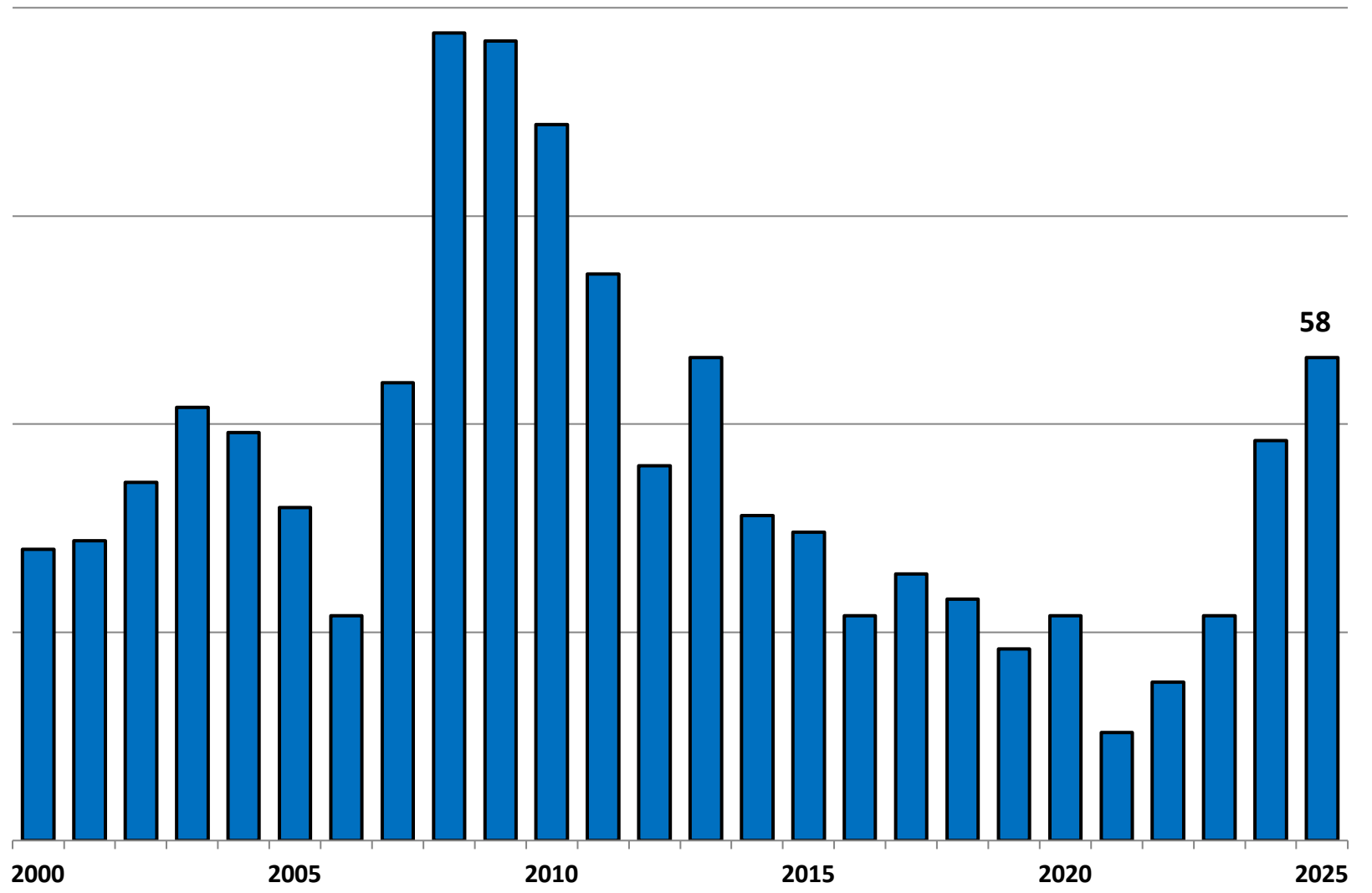


Prepared by the American
Bankruptcy Institute
www.abi.org



AMERICAN
BANKRUPTCY
INSTITUTE

Chapter 11 Cases Filed in Arkansas 2000 – 2025



Bankruptcy Filing Trends in Arkansas: 2000-2025

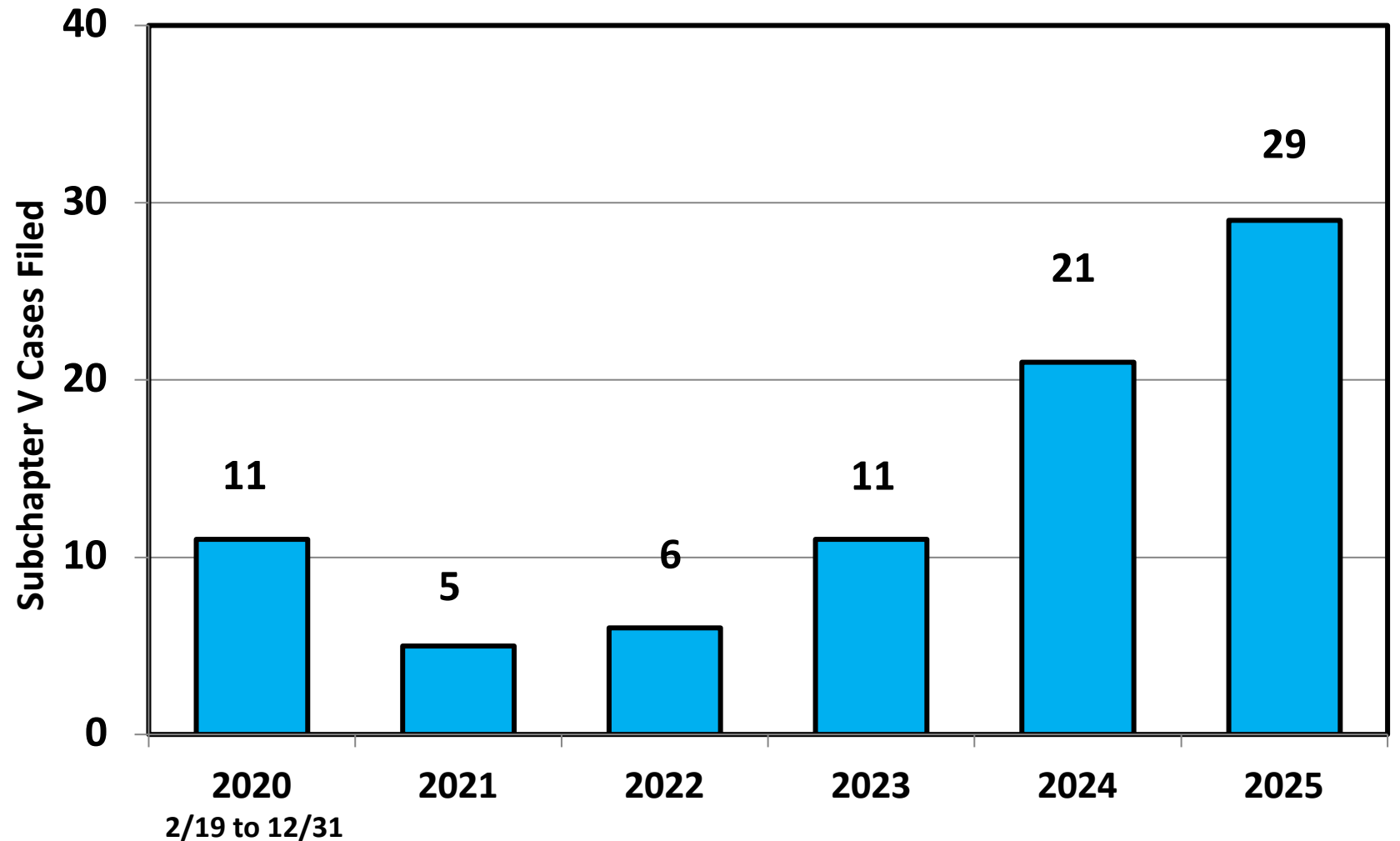


Prepared by the American
Bankruptcy Institute
www.abi.org



AMERICAN
BANKRUPTCY
INSTITUTE

Subchapter V Cases Filed in Arkansas Calendar Years 2020 - 2025



Source: ABI review of PACER records

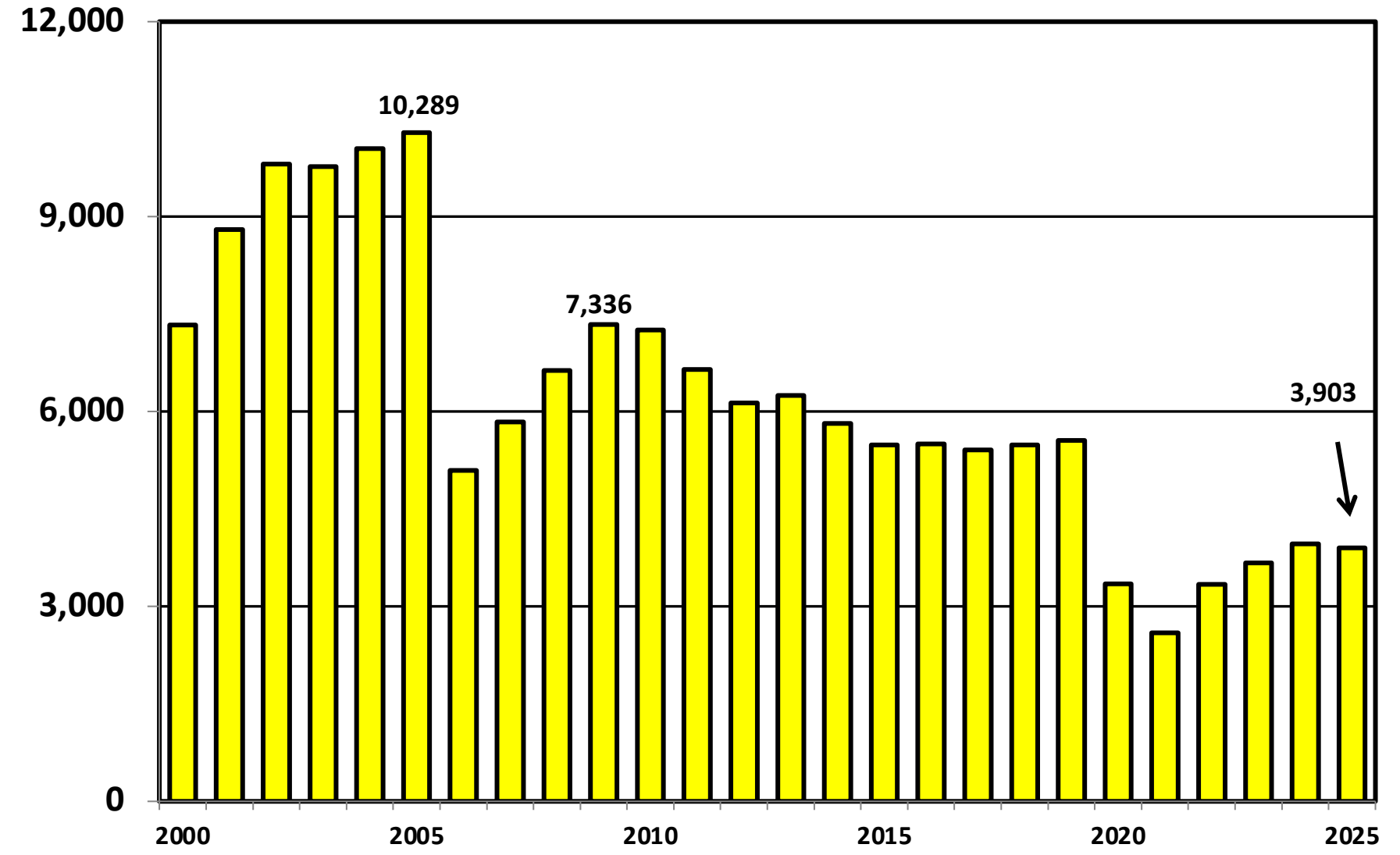
Bankruptcy Filing Trends in Arkansas: 2000-2025



Prepared by the American
Bankruptcy Institute
www.abi.org



Chapter 13 Cases Filed in Arkansas 2000 - 2025



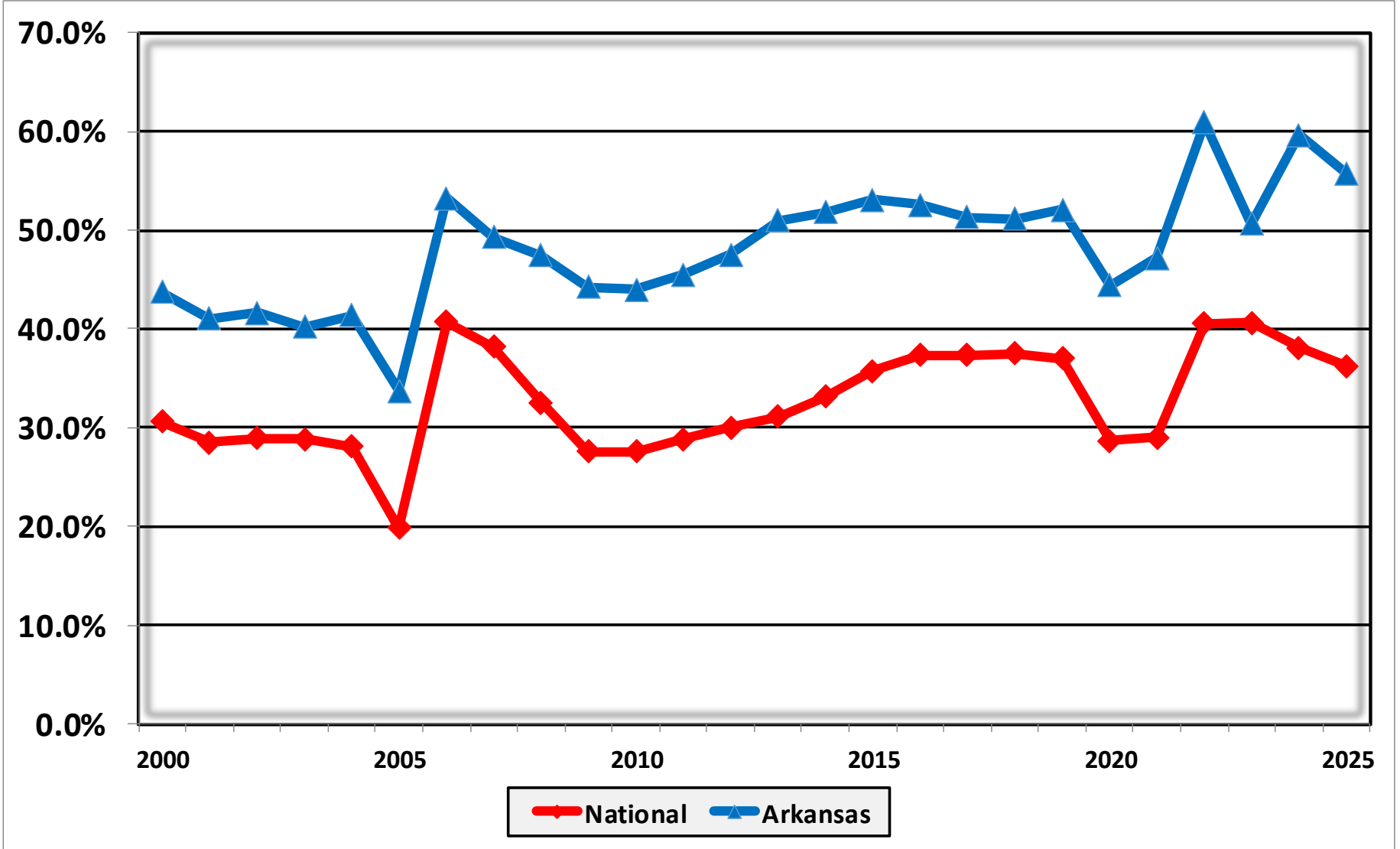
Bankruptcy Filing Trends in Arkansas: 2000-2025



Prepared by the American Bankruptcy Institute
www.abi.org



Percent of Cases Filed as Chapter 13 Calendar Years 2000 - 2025



Bankruptcy Filing Trends in Arkansas: 2000-2025



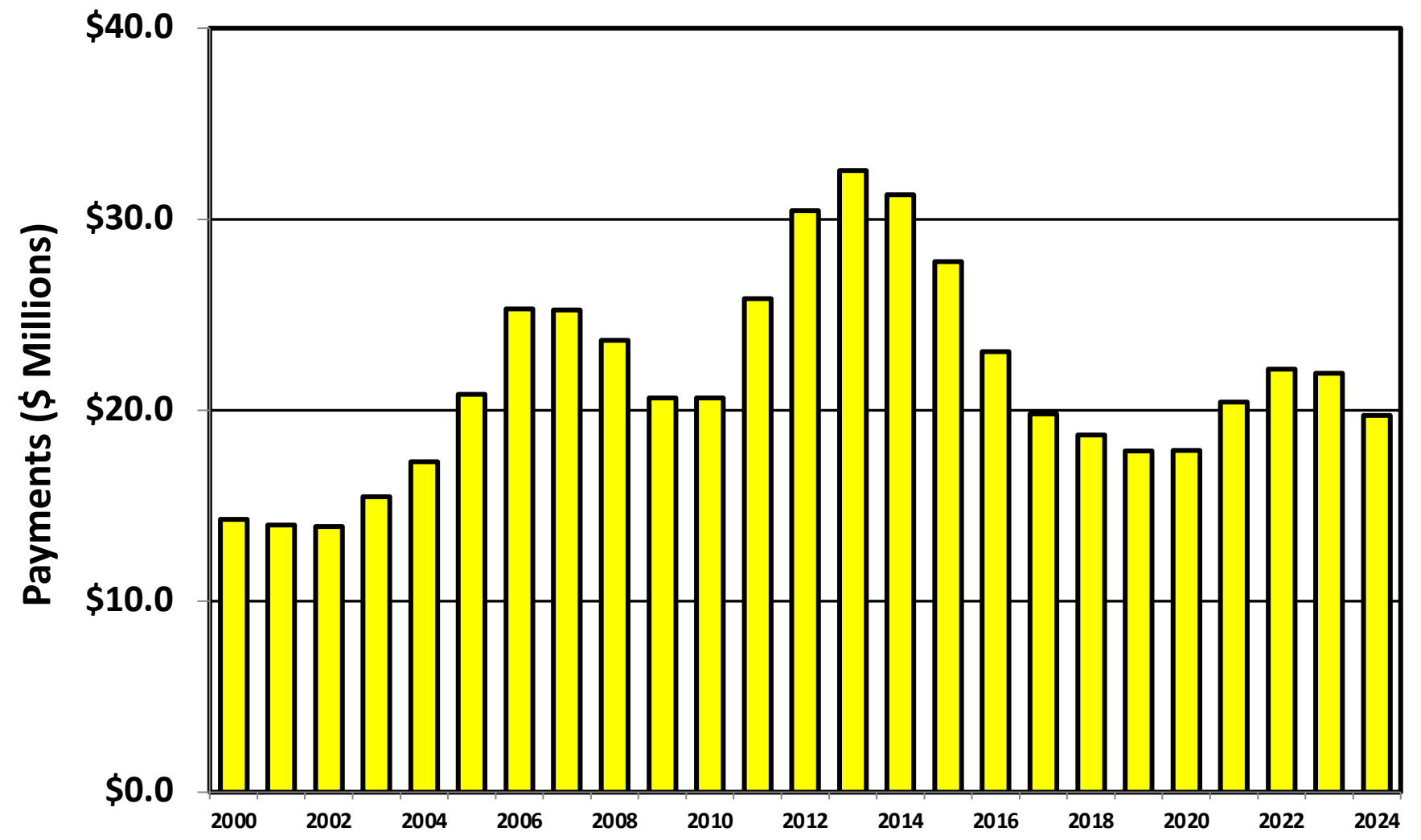
Prepared by the American Bankruptcy Institute
www.abi.org



AMERICAN
BANKRUPTCY
INSTITUTE

Chapter 13 Cases in Arkansas

Amount (in Millions) Paid to Unsecured Creditors
Fiscal Years 2000 - 2024



Source: Executive Office for United States Trustees

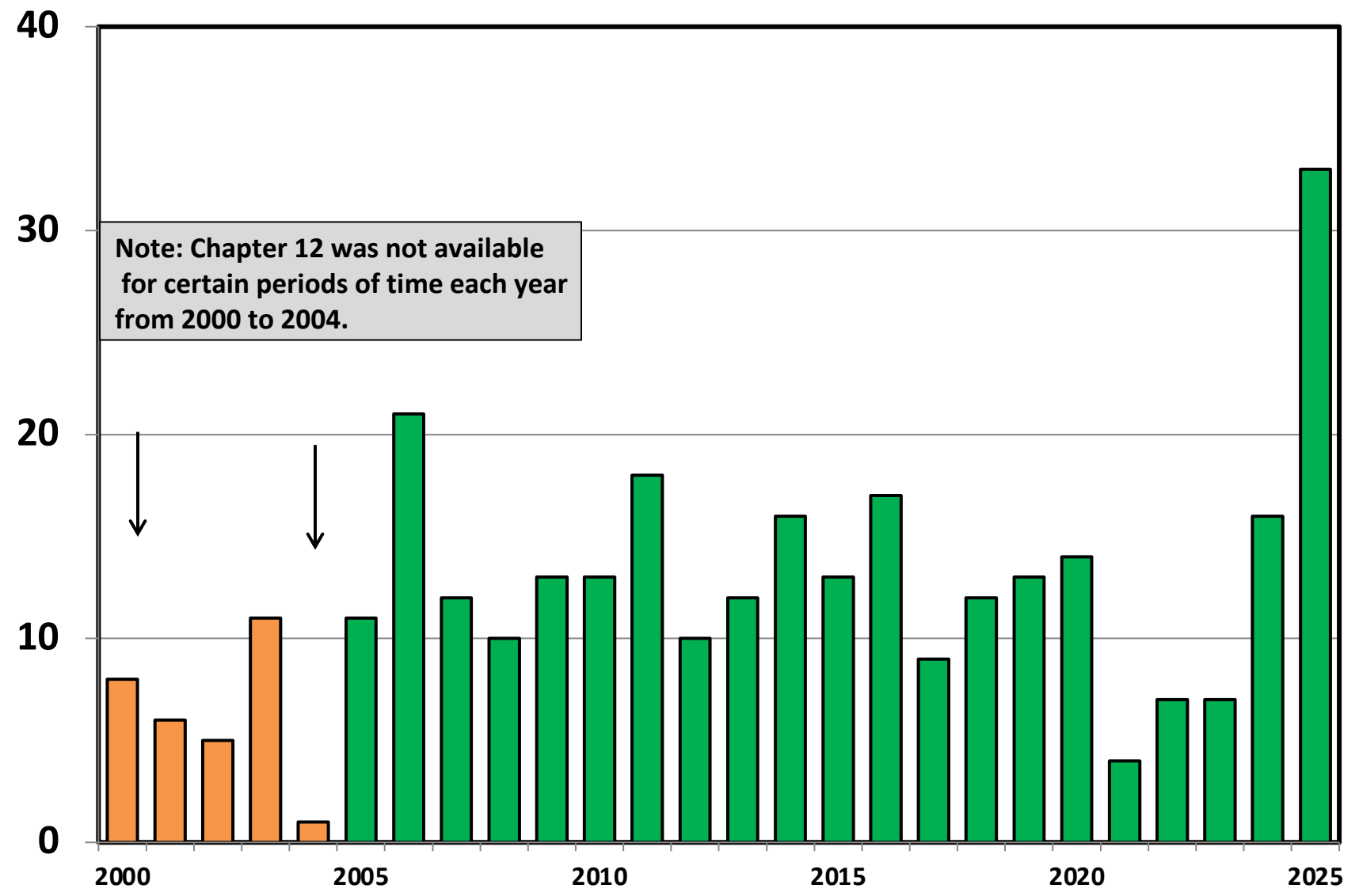
Bankruptcy Filing Trends in Arkansas: 2000-2025



Prepared by the American Bankruptcy Institute
www.abi.org



Chapter 12 Cases Filed in Arkansas 2000 - 2025



Bankruptcy Filing Trends in Arkansas: 2000-2025

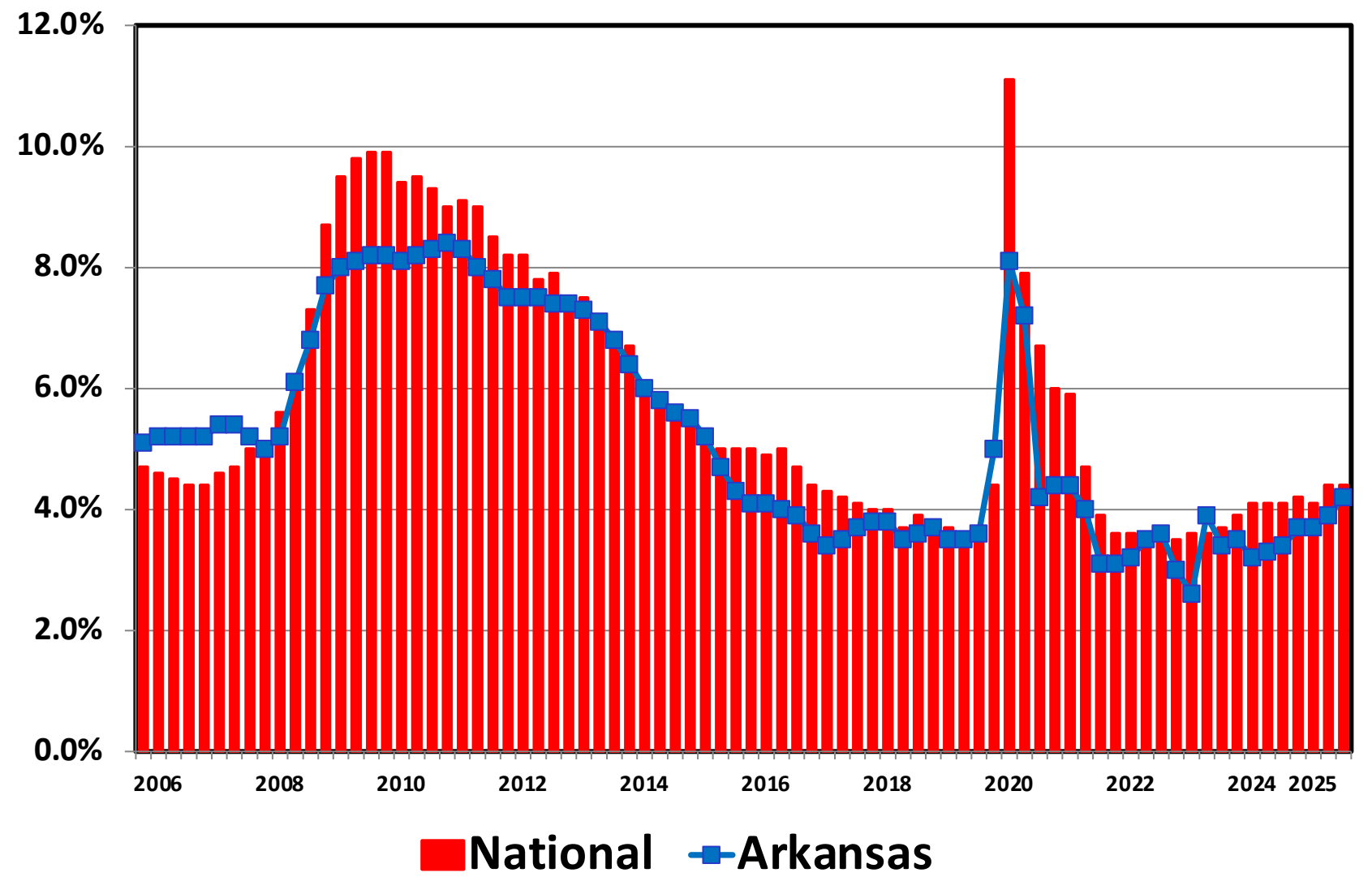


Prepared by the American
Bankruptcy Institute
www.abi.org



AMERICAN
BANKRUPTCY
INSTITUTE

Unemployment Rate By Quarter 2006 - 2025



Source: Bureau of Labor Statistics

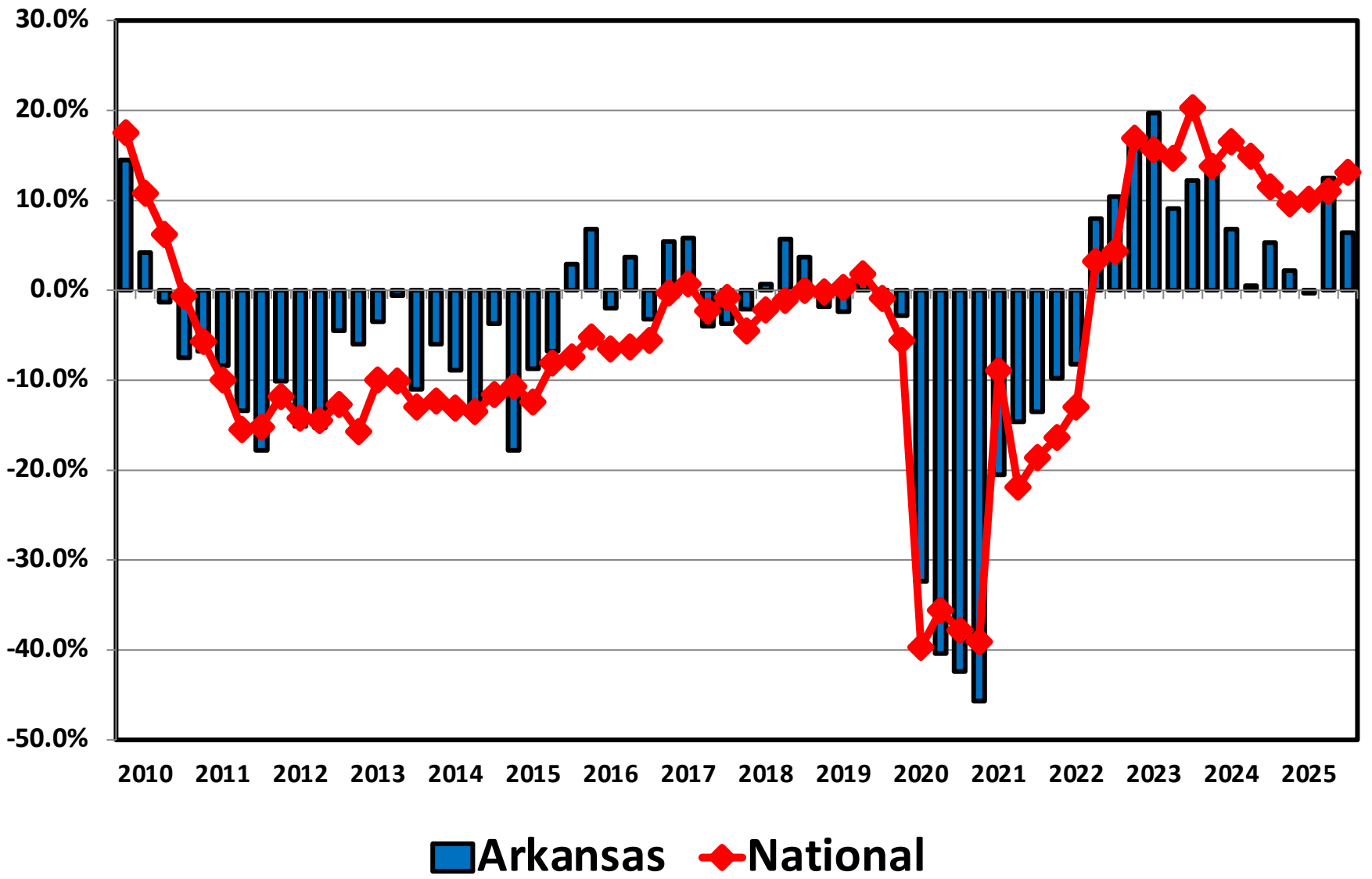
Bankruptcy Filing Trends in Arkansas: 2000-2025



Prepared by the American Bankruptcy Institute
www.abi.org



Filing Trends By Quarter Arkansas vs. National Average (Percent Change From Same Quarter One Year Prior)



Bankruptcy Filing Trends in Arkansas: 2000-2025







Prepared by the American Bankruptcy Institute
www.abi.org

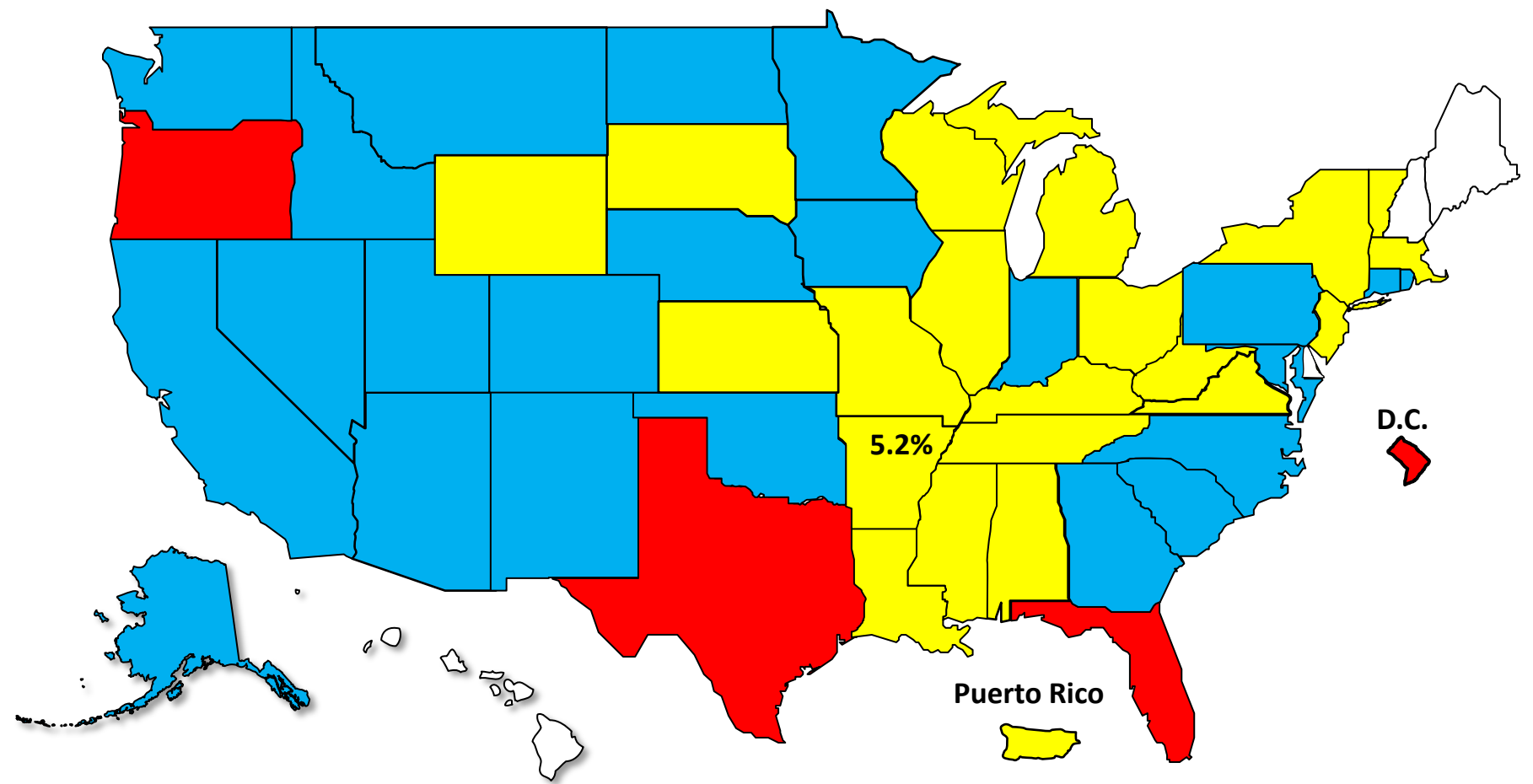


Bankruptcy Filing Trends

Calendar Year 2025 vs. 2024

National Average = 11.0% Increase

 +20% or More  +10.0% to 19.9%  +0% to 9.9%  Decline



Bankruptcy Filing Trends in Arkansas: 2000-2025

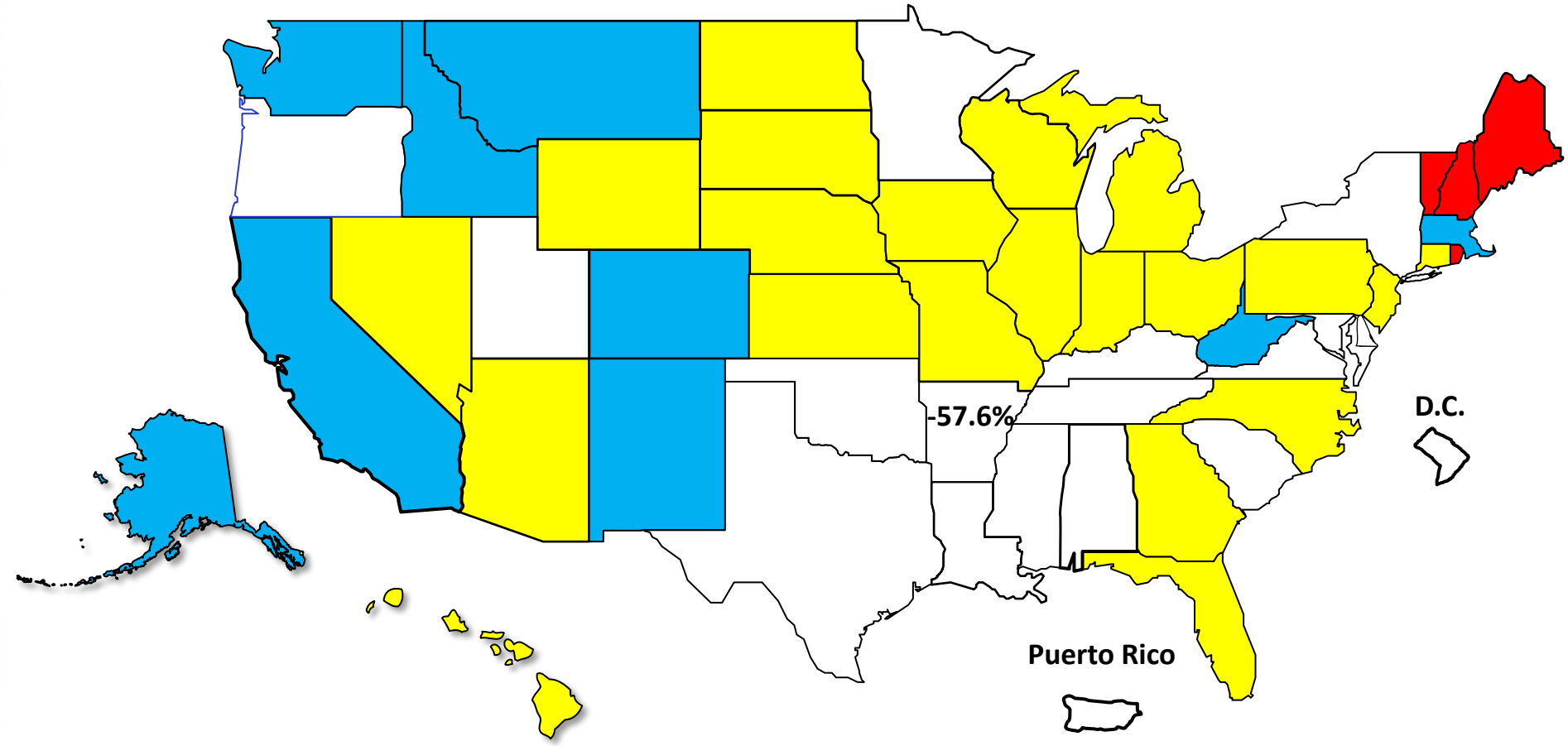


Prepared by the American Bankruptcy Institute
www.abi.org



Percent Change in Total Filings Calendar Year 2025 Compared to 2010 (National Average = 63.9% Decrease)

Amount of Decrease





AMERICAN BANKRUPTCY INSTITUTE

Prepared by the American Bankruptcy Institute. www.abi.org