

Bankruptcy Filing Trends in Arizona: 2000-2025



Prepared by the American Bankruptcy Institute. www.abi.org



Bankruptcy Filing Trends in Arizona: 2000-2025



Prepared by the American Bankruptcy Institute
www.abi.org



AMERICAN
 BANKRUPTCY
 INSTITUTE



Arizona

State at a Glance		
	Arizona	National
Population (7/1/2025)	7,623,818	341,784,857
- Change since April 2020	6.5%	3.1%
- Foreign Born	13.0%	14.1%
Size (Square Miles)	113,653	3,533,038
Median Household Income	\$79,964	\$80,734
Persons per Household	2.53	2.53
Per Capita Income	\$42,503	\$44,673
Median Home Value	\$394,500	\$332,700
Homeownership Rate	67.4%	65.2%
High School Graduate (or Higher)	89.4%	89.6%
College Graduate (or Higher)	33.3%	35.7%
Disabled	9.5%	9.3%
No Health Insurance	12.5%	9.6%
In Poverty	11.7%	10.6%
Source: U.S. Census Bureau January 2026		

Bankruptcy Filing Trends in Arizona: 2000-2025



Prepared by the American
Bankruptcy Institute
www.abi.org



AMERICAN
BANKRUPTCY
INSTITUTE

Bankruptcy Filings in Arizona Calendar Years 2000 - 2025					
Year	Total	Chapter 7	Chapter 11	Chapter 13	Other Cases*
2025	12,891	10,634	146	2,109	2
2024	11,335	9,221	131	1,973	10
2023	9,599	7,830	104	1,664	1
2022	8,961	7,302	102	1,556	1
2021	9,884	8,461	82	1,338	3
2020	13,515	11,450	126	1,935	4
2019	16,933	13,640	169	3,119	5
2018	16,337	13,156	174	3,004	3
2017	15,997	12,895	199	2,896	7
2016	15,514	12,705	210	2,596	3
2015	17,194	14,475	289	2,429	1
2014	19,898	17,103	298	2,489	8
2013	23,381	20,094	303	2,976	8
2012	28,514	24,304	442	3,765	3
2011	36,556	30,853	464	5,226	13
2010	42,829	35,393	635	6,795	6
2009	34,637	28,391	613	5,627	6
2008	19,532	15,535	407	3,586	4
2007	10,920	8,326	242	2,348	4
2006	7,793	6,286	143	1,362	2
2005	40,214	35,914	161	4,137	2
2004	31,387	25,794	196	5,395	2
2003	31,811	25,432	297	6,079	3
2002	29,716	23,538	299	5,870	9
2001	25,489	20,448	296	4,741	4
2000	20,955	16,839	318	3,792	6
*Chapters 9, 12 and 15					

Bankruptcy Filing Trends in Arizona: 2000-2025



Prepared by the American
Bankruptcy Institute
www.abi.org



AMERICAN
BANKRUPTCY
INSTITUTE

Business Bankruptcy Cases Filed - Arizona Years Ended December 31, 2000 - 2025					
CALENDAR YEAR	TOTAL FILINGS	CHAPTER 7	CHAPTER 11	CHAPTER 13	OTHER CASES*
2025	426	284	128	12	2
2024	434	285	117	22	10
2023	297	191	86	19	1
2022	221	125	84	11	1
2021	246	169	60	14	3
2020	339	230	94	11	4
2019	421	279	124	13	5
2018	435	289	120	23	3
2017	498	327	139	25	7
2016	513	324	151	35	3
2015	613	361	220	31	1
2014	677	441	210	18	8
2013	867	581	237	41	8
2012	1,134	740	344	48	2
2011	1,351	948	343	47	13
2010	1,636	1,068	502	60	6
2009	1,615	1,008	511	90	6
2008	1,069	684	360	21	4
2007	479	232	218	25	4
2006	261	119	127	13	2
2005	525	342	140	41	2
2004	480	258	161	60	1
2003	701	363	253	82	3
2002	756	390	254	103	9
2001	753	407	257	87	2
2000	765	364	297	98	6
* Chapters 9, 12 and 15					

Bankruptcy Filing Trends in Arizona: 2000-2025

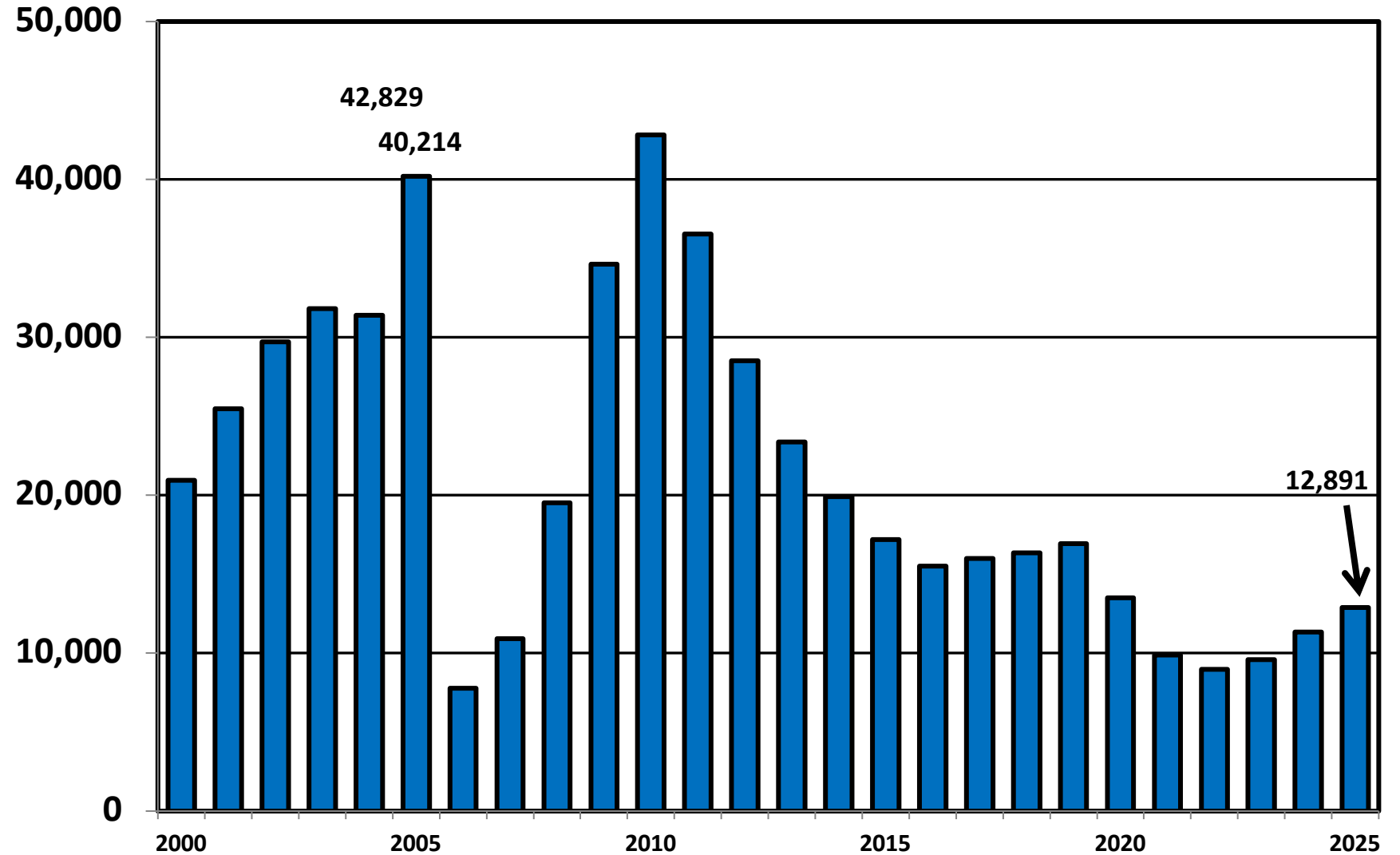


Prepared by the American
Bankruptcy Institute
www.abi.org



AMERICAN
BANKRUPTCY
INSTITUTE

District of Arizona Total Bankruptcy Cases Filed 2000 - 2025



Bankruptcy Filing Trends in Arizona: 2000-2025



Prepared by the American Bankruptcy Institute
www.abi.org



AMERICAN BANKRUPTCY INSTITUTE

Total Filings Relative to Population 2000 - 2025



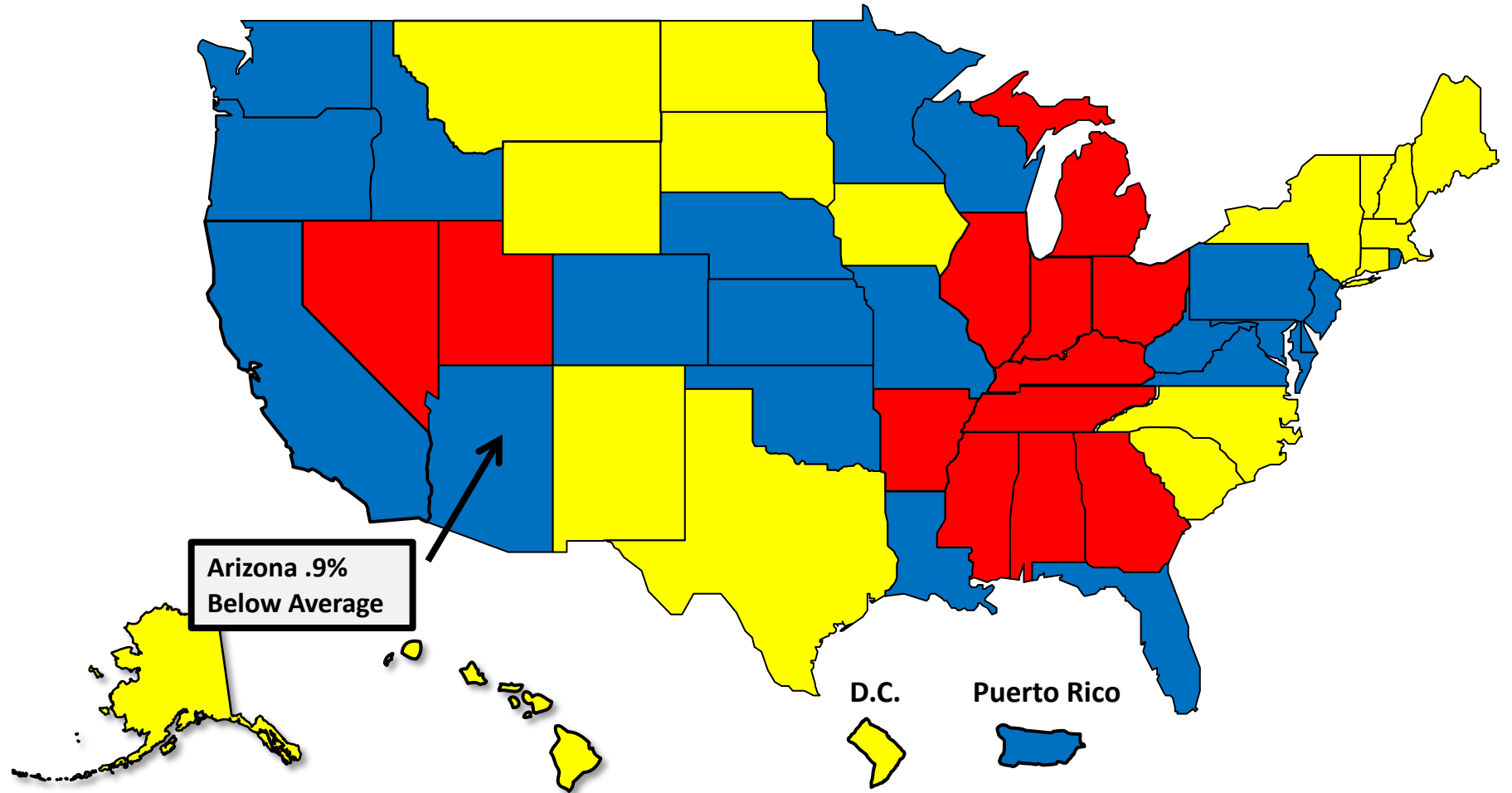
More than 25% Above Average



Within 25% of Average



More than 25% Below Average



Bankruptcy Filing Trends in Arizona: 2000-2025

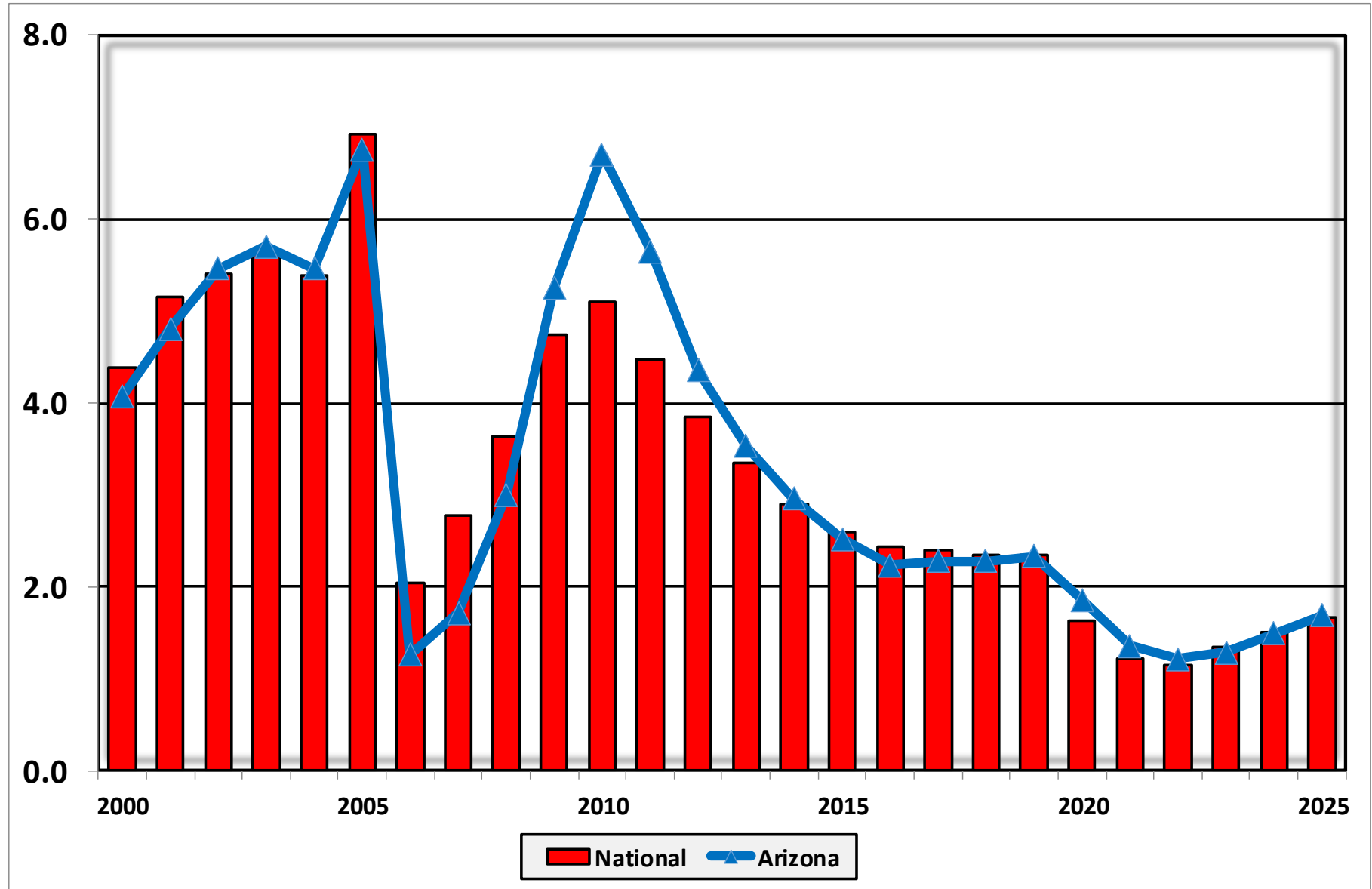


Prepared by the American
Bankruptcy Institute
www.abi.org



AMERICAN
BANKRUPTCY
INSTITUTE

Bankruptcy Filings per 1,000 Population Arizona vs. National Average 2000 - 2025



Bankruptcy Filing Trends in Arizona: 2000-2025

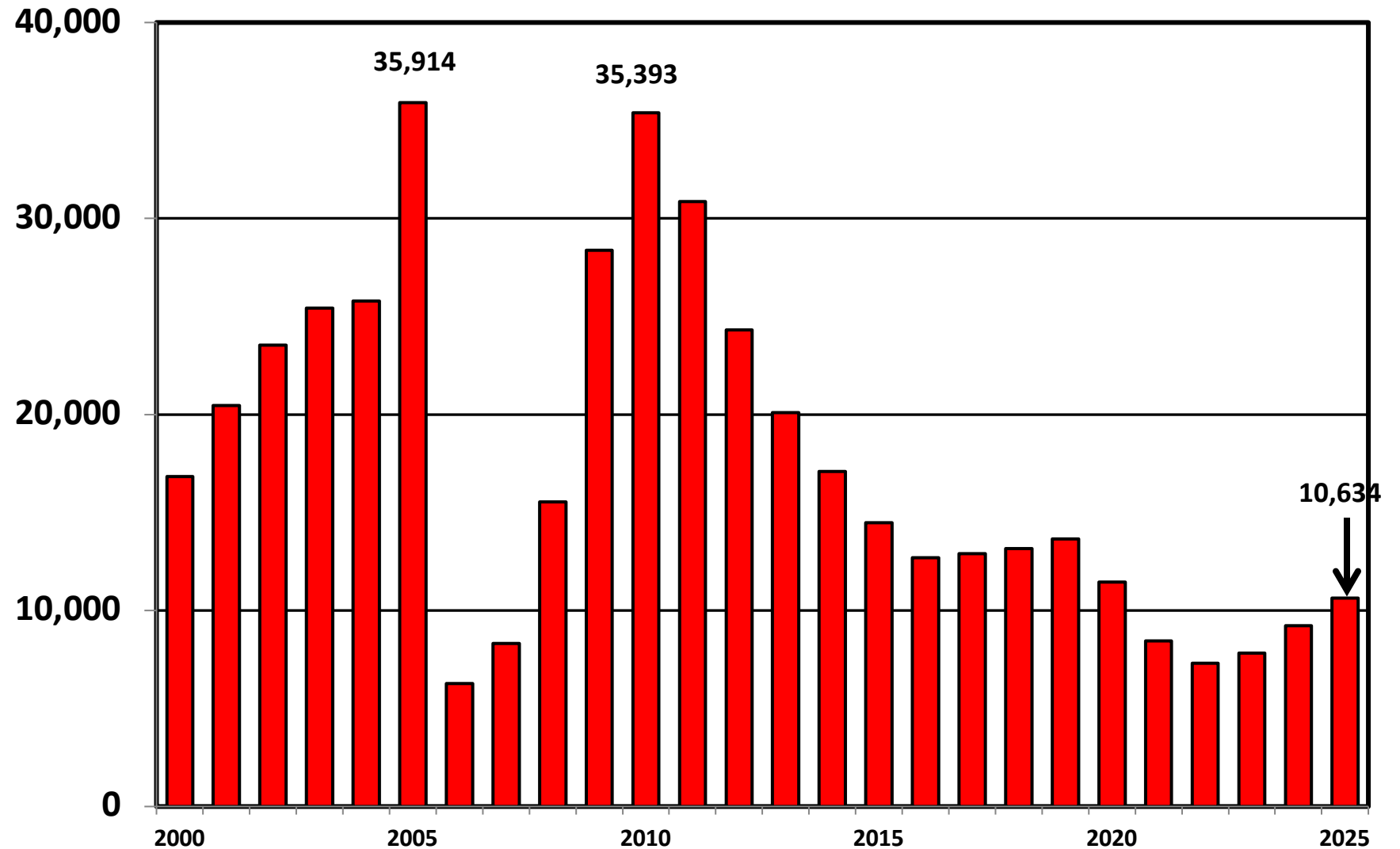


Prepared by the American
Bankruptcy Institute
www.abi.org



AMERICAN
BANKRUPTCY
INSTITUTE

District of Arizona Chapter 7 Cases Filed 2000 - 2025



Bankruptcy Filing Trends in Arizona: 2000-2025

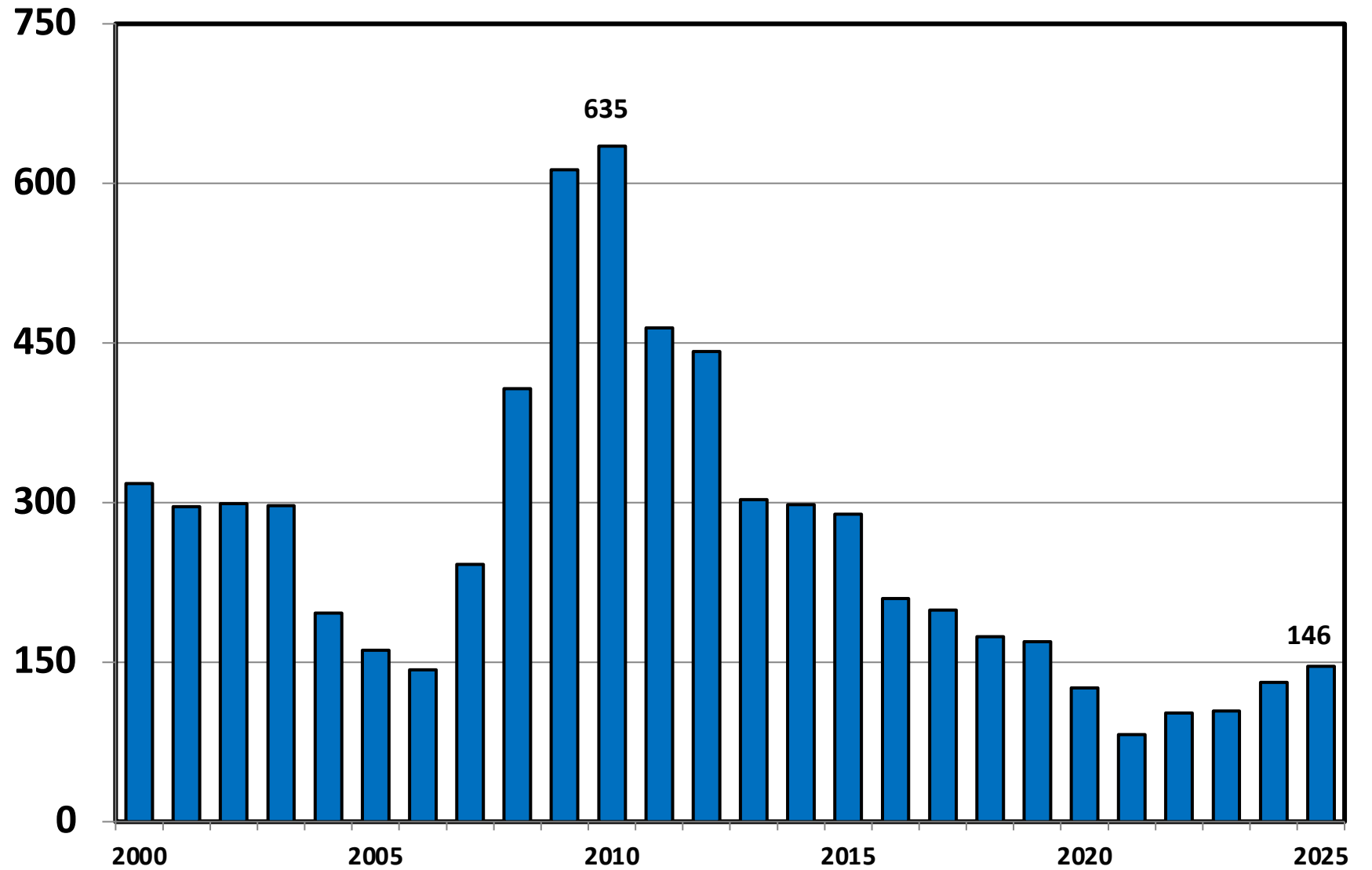


Prepared by the American
Bankruptcy Institute
www.abi.org



AMERICAN
BANKRUPTCY
INSTITUTE

Chapter 11 Cases Filed in Arizona 2000 - 2025



Bankruptcy Filing Trends in Arizona: 2000-2025

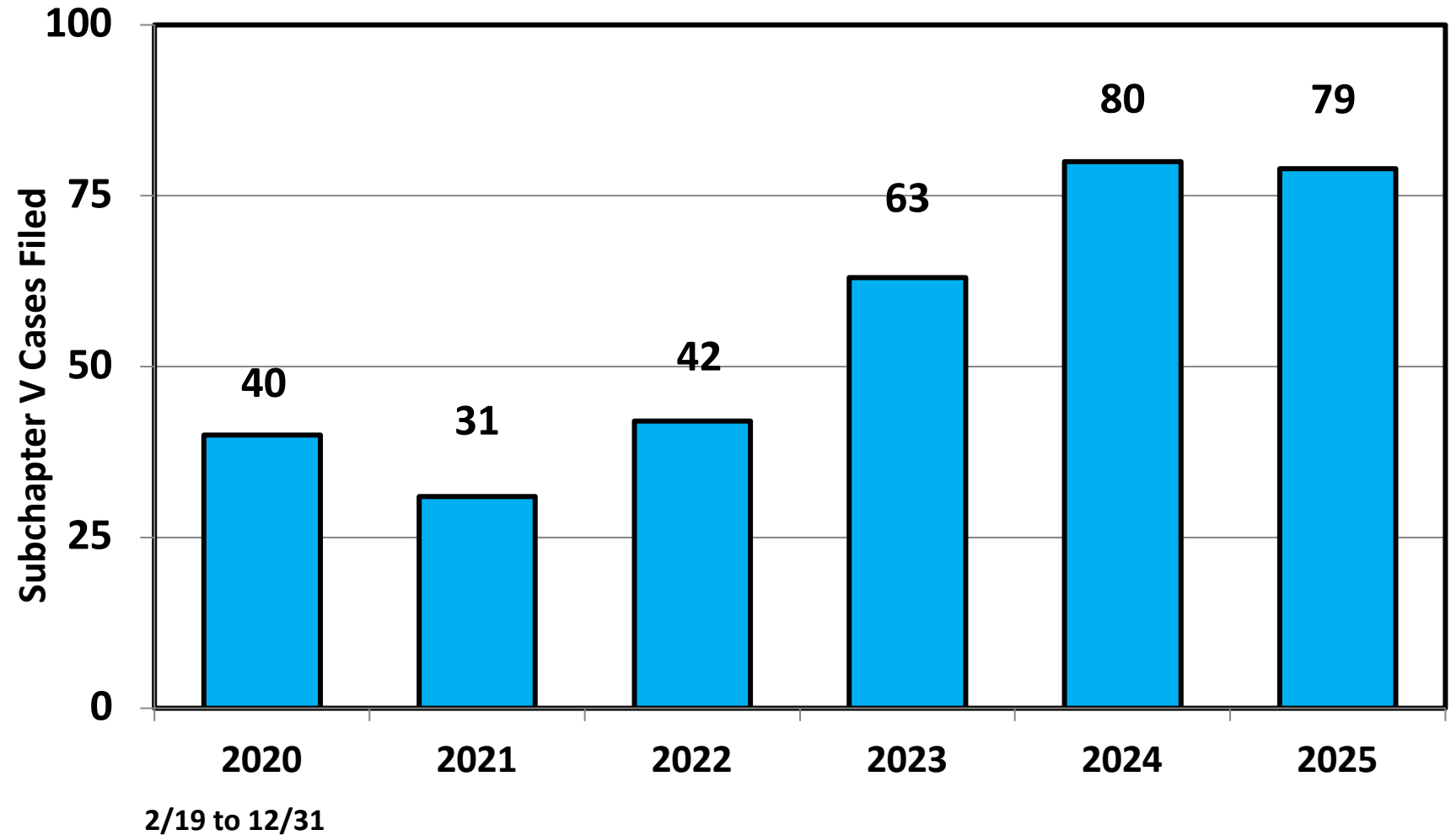


Prepared by the American
Bankruptcy Institute
www.abi.org



AMERICAN
BANKRUPTCY
INSTITUTE

Subchapter V Cases Filed in Arizona Calendar Years 2020 - 2025



Source: ABI review of PACER records

Bankruptcy Filing Trends in Arizona: 2000-2025

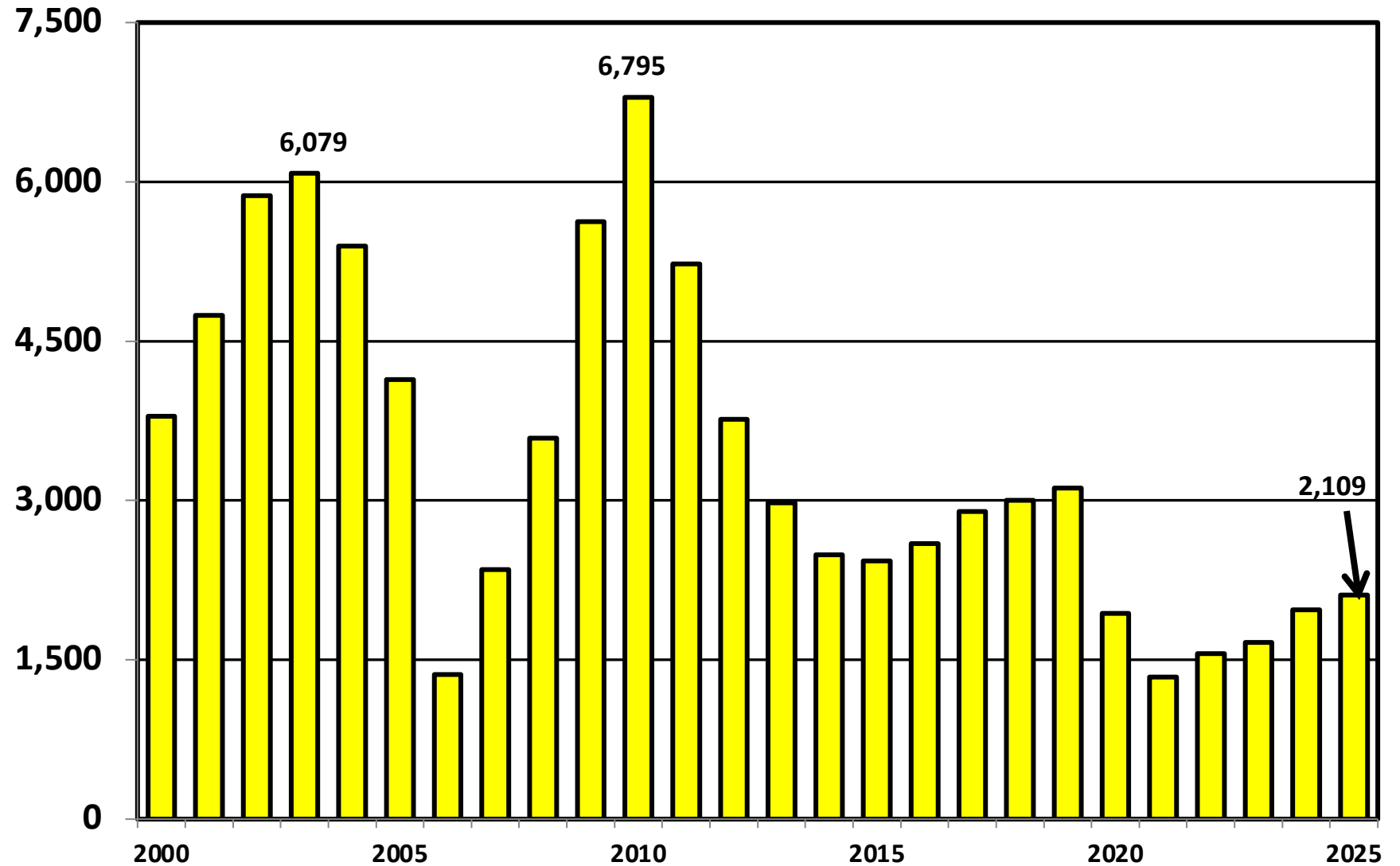


Prepared by the American
Bankruptcy Institute
www.abi.org



AMERICAN
BANKRUPTCY
INSTITUTE

District of Arizona Chapter 13 Cases Filed 2000 - 2025



Bankruptcy Filing Trends in Arizona: 2000-2025

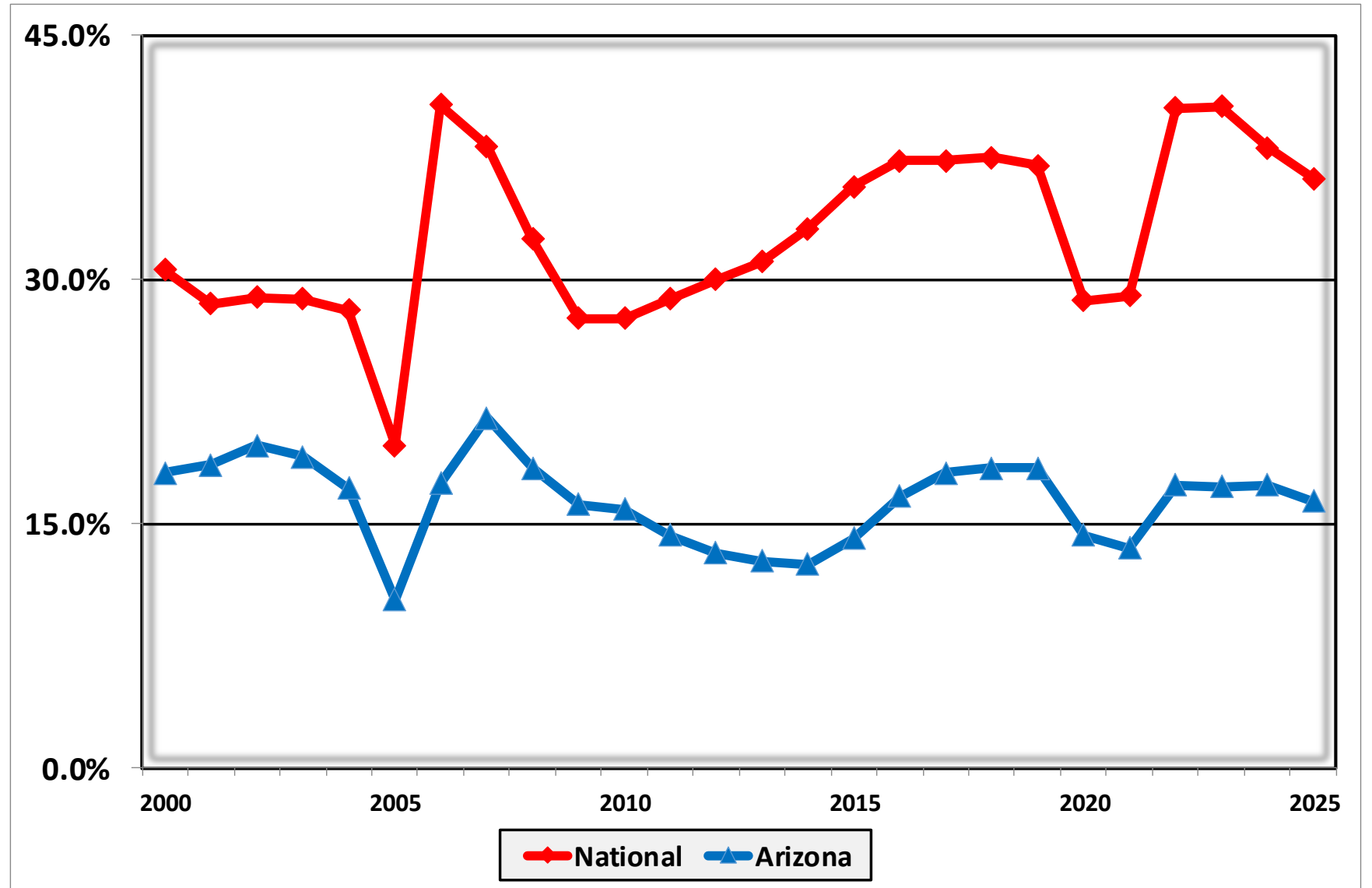


Prepared by the American
Bankruptcy Institute
www.abi.org



AMERICAN
BANKRUPTCY
INSTITUTE

Percent of Cases Filed as Chapter 13 Calendar Years 2000 - 2025



Bankruptcy Filing Trends in Arizona: 2000-2025

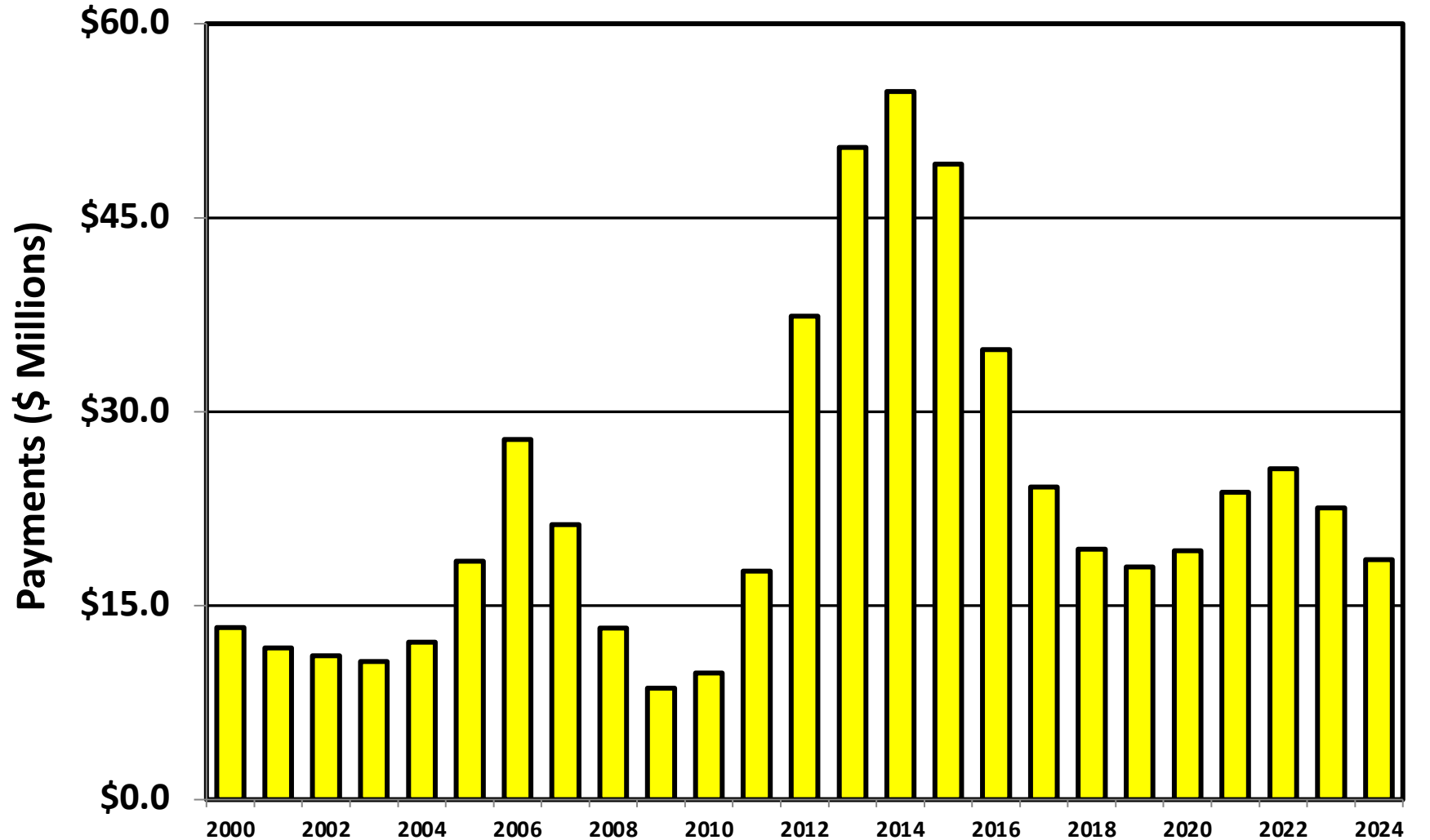


Prepared by the American Bankruptcy Institute
www.abi.org



AMERICAN
BANKRUPTCY
INSTITUTE

Chapter 13 Cases in Arizona Amount (in Millions) Paid to Unsecured Creditors Fiscal Years 2000 – 2024



Source: Executive Office for United States Trustees

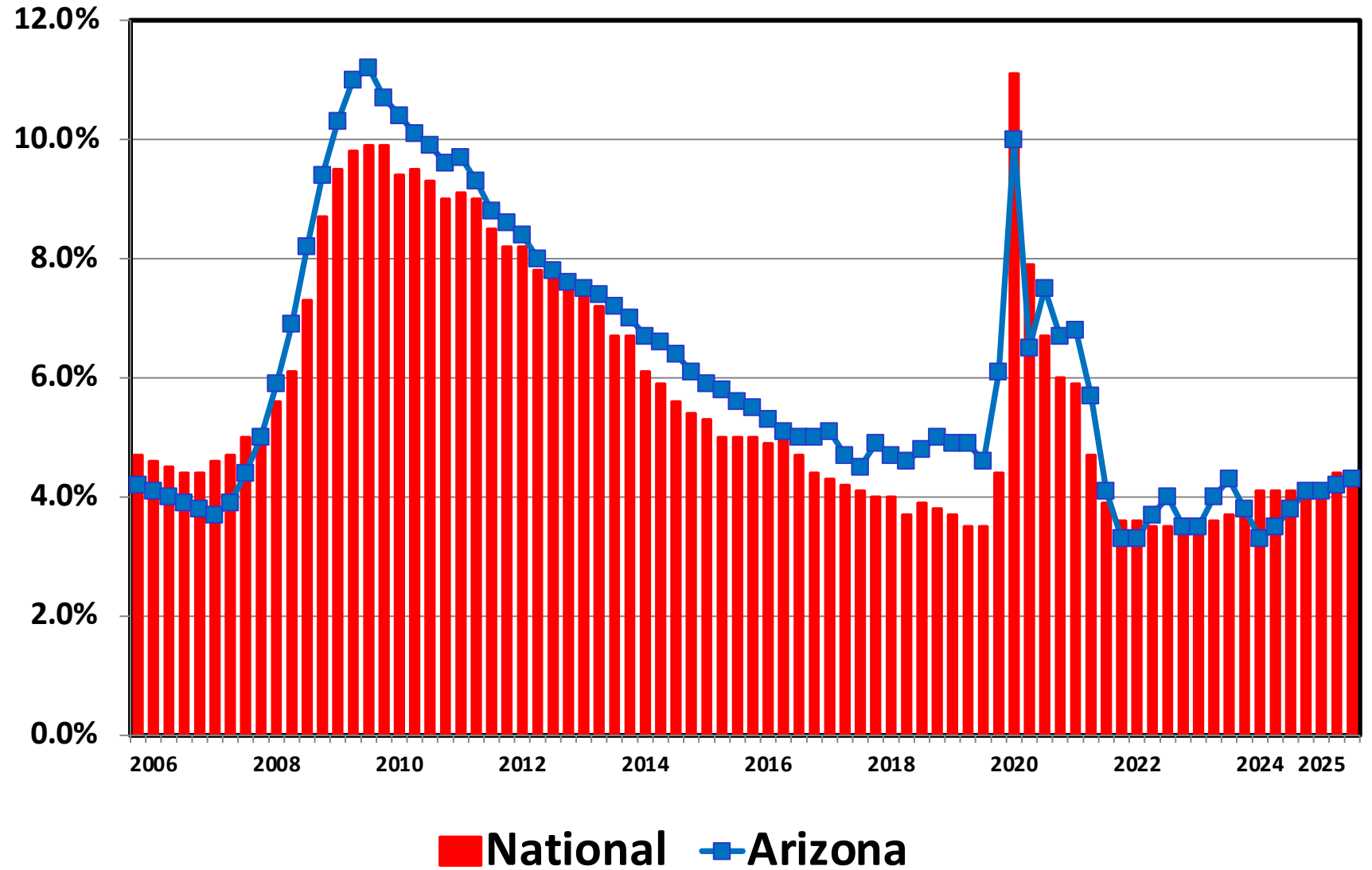
Bankruptcy Filing Trends in Arizona: 2000-2025



Prepared by the American
Bankruptcy Institute
www.abi.org



Unemployment Rate By Quarter 2006 - 2025



Source: Bureau of Labor Statistics

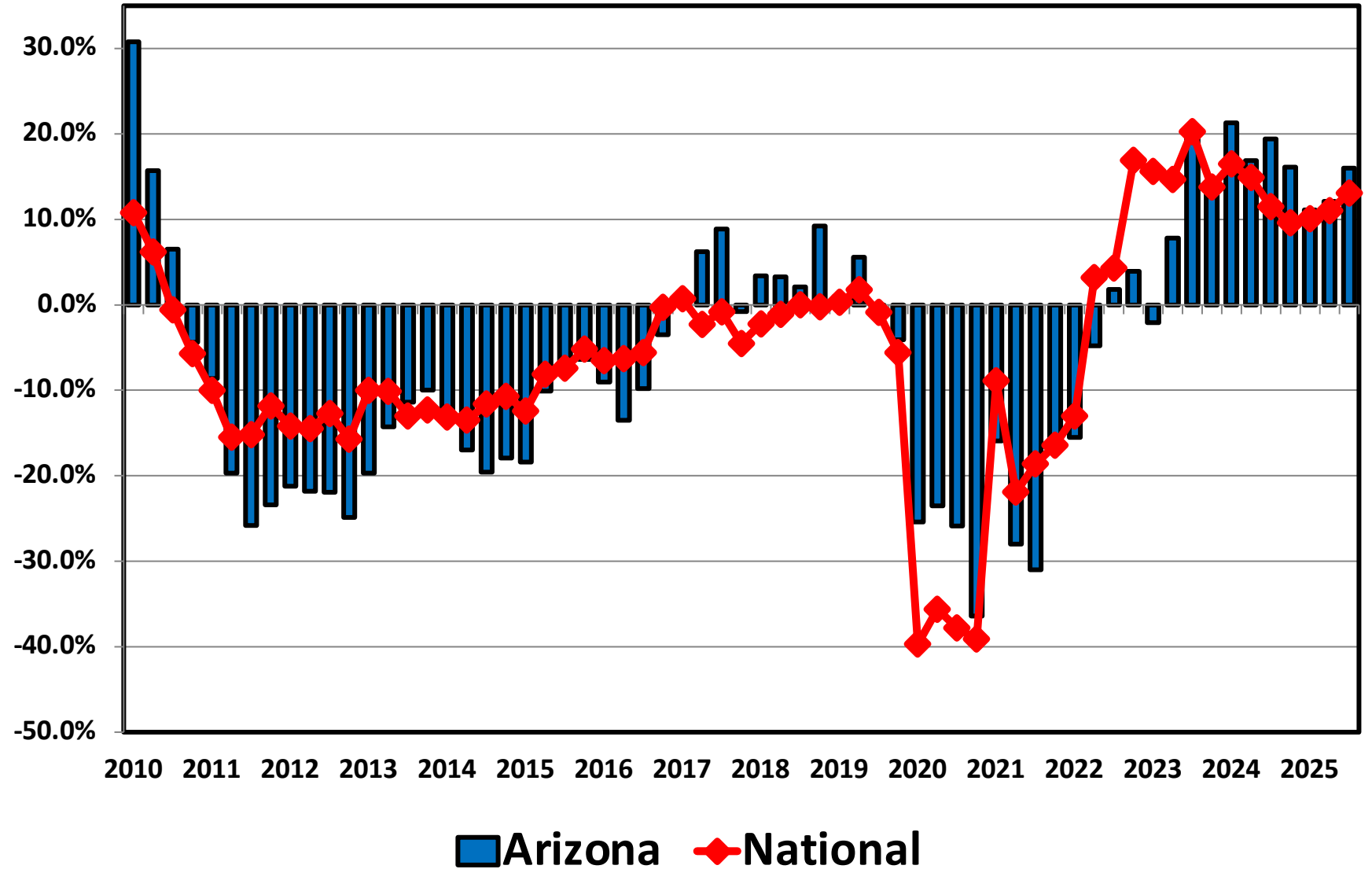
Bankruptcy Filing Trends in Arizona: 2000-2025



Prepared by the American Bankruptcy Institute
www.abi.org



Filing Trends By Quarter Arizona vs. National Average (Percent Change From Same Quarter One Year Prior)





AMERICAN BANKRUPTCY INSTITUTE

Prepared by the American Bankruptcy Institute. www.abi.org